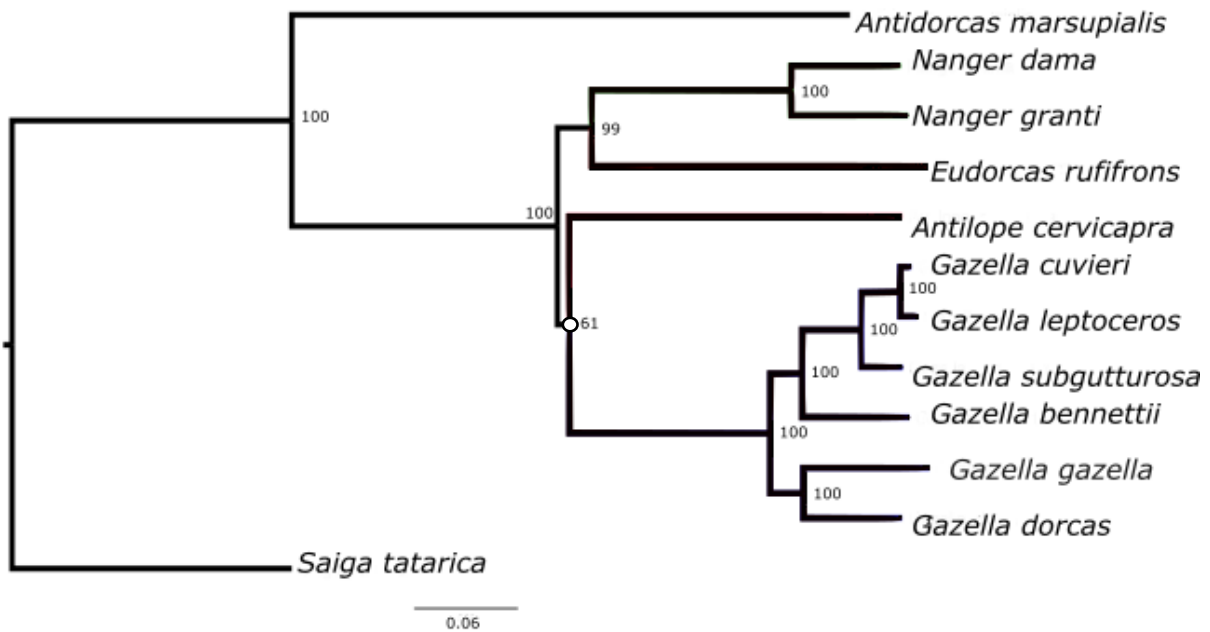
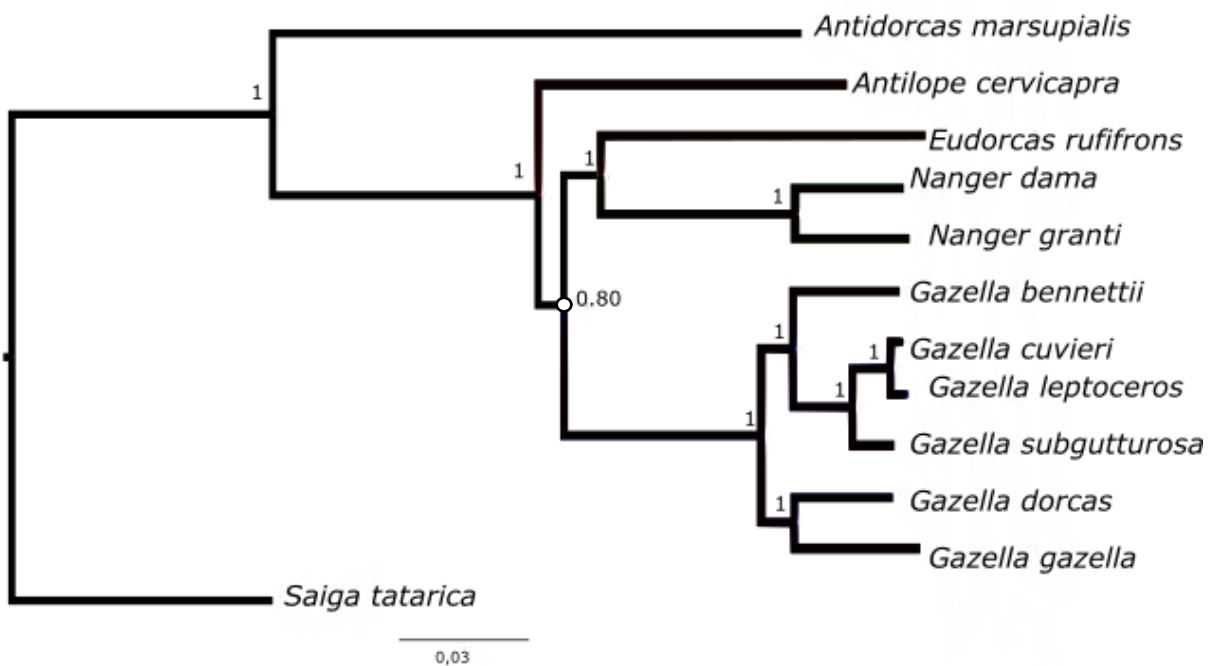


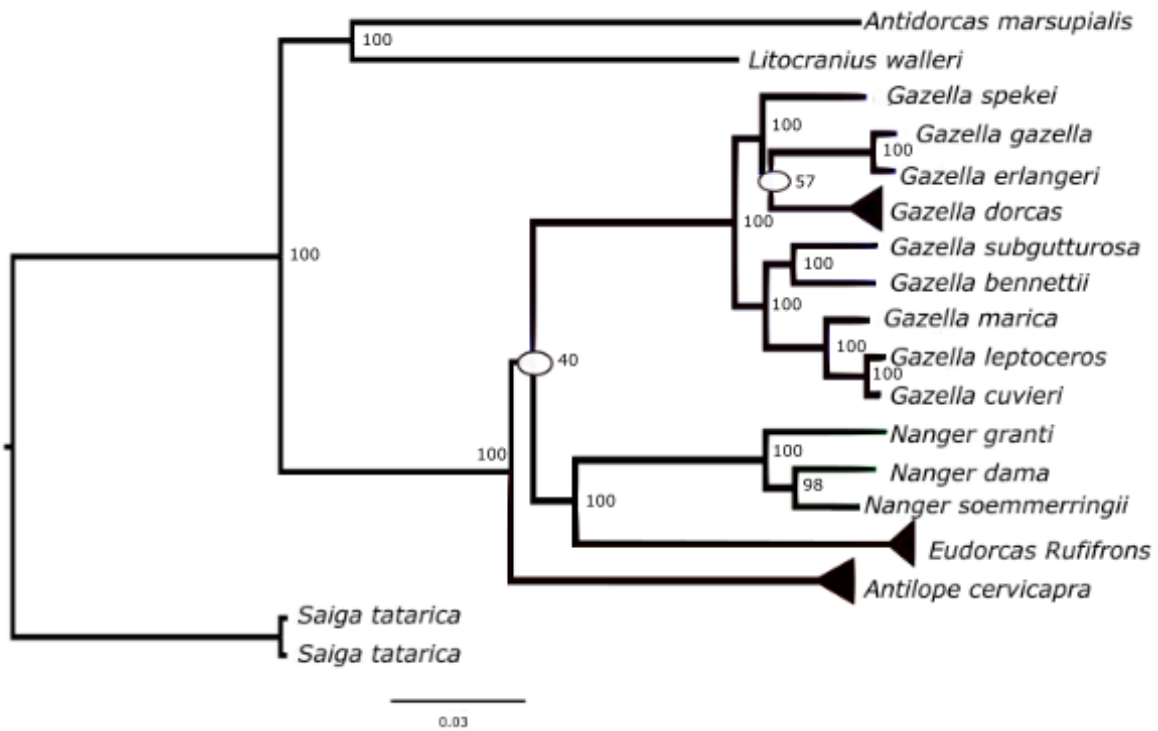
Supplementary information:



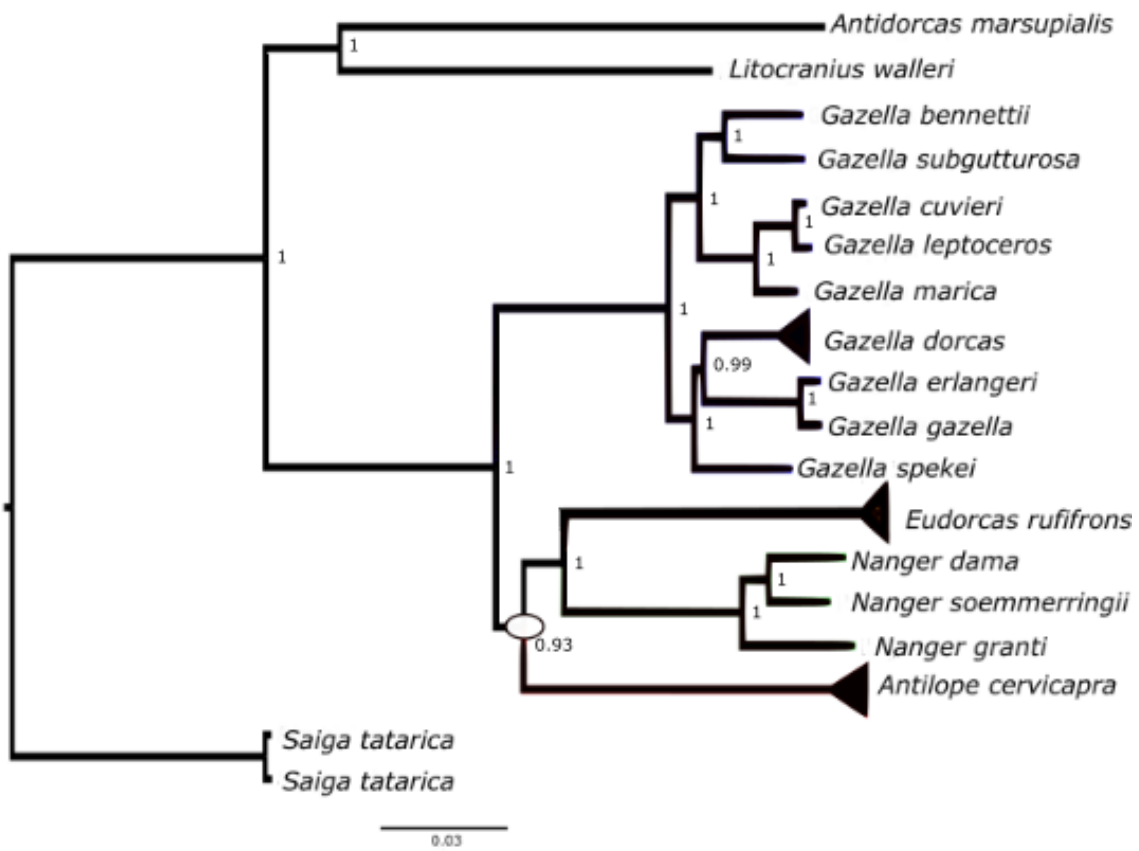
S1: Maximum likelihood tree using 17 mitochondrial markers. Unfilled symbols indicate a bootstrap support <65



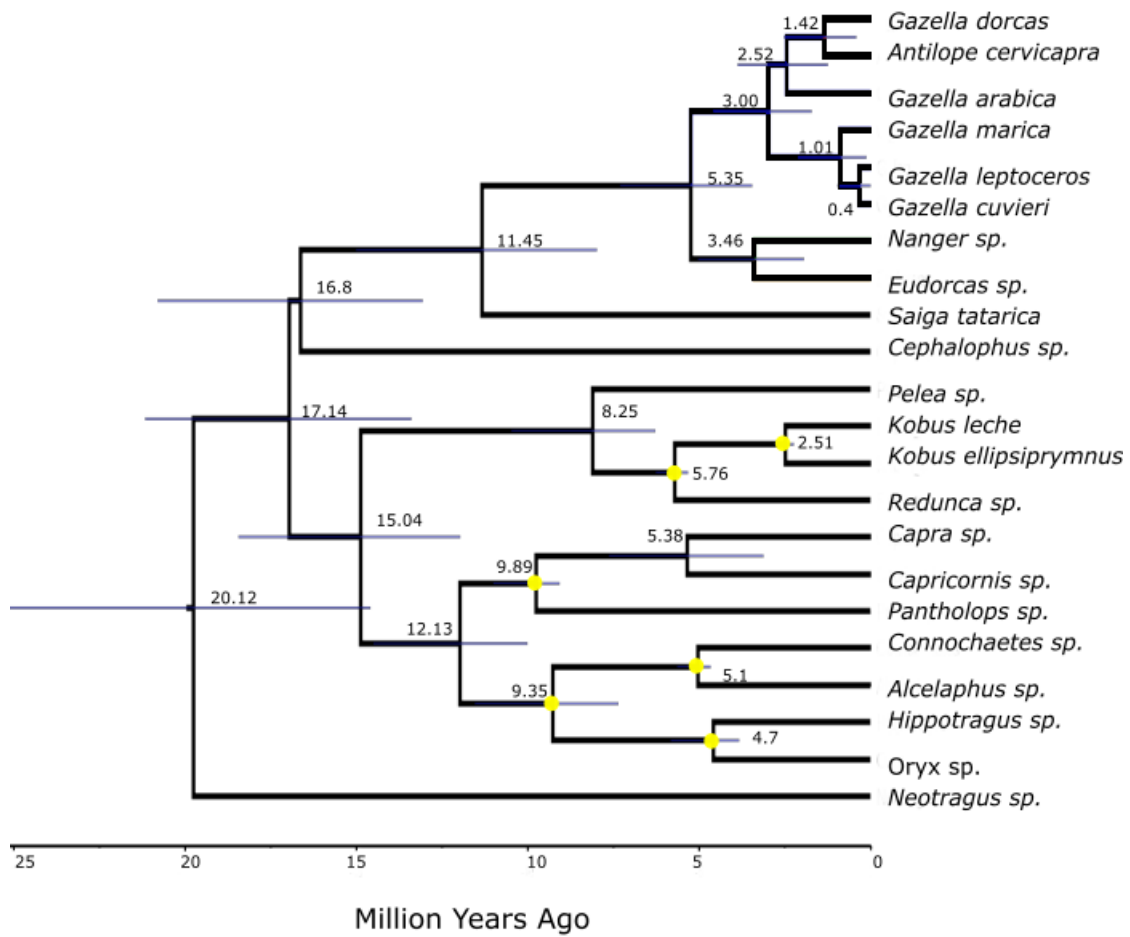
S2: Bayesian phylogeny using 17 mitochondrial markers. Unfilled symbols indicate a posterior probability of <0.85



S3: Maximum likelihood tree using the complete mitochondrial genome. Unfilled symbols indicate a bootstrap support of <60



S4: Bayesian phylogeny using the complete mitochondrial genome. Unfilled symbols indicate a posterior probability <0.95



S5: Bovid phylogeny dated using 6 fossil calibrations (yellow circles)

Sr. No.	List of Species	Accession numbers (NCBI database)
1	<i>Antilope cervicapra</i>	KU560739.1, KU560698.1, KU560873.1, KU560912.1, KU560829.1, KU560783.1, JX647812.1, JX647828.1
2	<i>Antidorcas marsupialis</i>	KU560745.1, KU560703.1, FJ773322.1, KU560879.1, AF210231.1, AF210187.1, KU560836.1, KU560789.1
3	<i>Eudorcas rufifrons</i>	KU560735.1, KU560694.1, KU560870.1, MF180065.1, MF180047.1, KU560825.1, KU560779.1, MF180089.1, MF180124.1
4	<i>Eudorcas thomsonii</i>	FJ773325.1, AF165753.1, AF165749.1, AF165752.1, AF165750.1
5	<i>Gazella arabica</i>	KU560709.1, KU560664.1, KU560843.1, KU560886.1, KU560793.1, KU560752.1, JX647815.1, JX647831.1
6	<i>Gazella bennettii</i>	KU560727.1, KU560682.1, KU560856.1, KU560899.1, KU560814.1, KU560768.1
7	<i>Gazella cuvieri</i>	KU560730.1, KU560685.1, KU560860.1, MF180058.1, KU560905.1, MF180041.1, KU560772.1, MF180085.1, MF180103.1
8	<i>Gazella dorcas</i>	KU560720.1, KU560675.1, KU560849.1, MF180057.1, KU560891.1, MF180030.1, KU560808.1, KU560763.1, MF180074.1, JX647813.1, JX647830.1
9	<i>Gazella gazella</i>	KU560704.1, KU560661.1, KU560837.1, KU560881.1, KU560790.1, KU560746.1
10	<i>Gazella leptoceros</i>	KU560732.1, KU560687.1, FJ773324.1, KU560862.1, MF180064.1, KU560906.1, MF180046.1, KU560774.1, MF180088.1, MF180105.1
11	<i>Gazella marica</i>	KU560734.1, KU560689.1, KU560865.1, KU560910.1, KU560823.1, KU560775.1, JX647816.1, JX647833.1
12	<i>Gazella spekei</i>	KU560712.1, KU560668.1, KU560846.1, KU560888.1, KU560799.1, KU560754.1
13	<i>Gazella subgutturosa</i>	KU560724.1, KU560679.1, KU560854.1, KU560898.1, KU560812.1, KU560765.1, JX647816.1
14	<i>Nanger dama</i>	MF180066.1, MF180050.1, MF180092.1, JN018099.1, JN018096.1
15	<i>Nanger granti</i>	FJ773323.1, AY122029.1, AY670669.1
16	<i>Saiga tatarica</i>	KU560741.1, KU560699.1, FJ773321.1, KU560877.1, KU560835.1, KU560787.1, D32188.2, AY449535.1

S6: List of taxa used for analysis of nuclear data and their accession numbers