



Full wwPDB X-ray Structure Validation Report ⓘ

Dec 3, 2023 – 02:38 pm GMT

PDB ID : 2ITO
Title : Crystal structure of EGFR kinase domain G719S mutation in complex with Iressa
Authors : Yun, C.-H.; Boggon, T.J.; Li, Y.; Woo, S.; Greulich, H.; Meyerson, M.; Eck, M.J.
Deposited on : 2006-05-25
Resolution : 3.25 Å(reported)

This is a Full wwPDB X-ray Structure Validation Report for a publicly released PDB entry.

We welcome your comments at validation@mail.wwpdb.org

A user guide is available at

<https://www.wwpdb.org/validation/2017/XrayValidationReportHelp>

with specific help available everywhere you see the ⓘ symbol.

The types of validation reports are described at

<http://www.wwpdb.org/validation/2017/FAQs#types>.

The following versions of software and data (see [references ⓘ](#)) were used in the production of this report:

MolProbity : 4.02b-467
Mogul : 1.8.4, CSD as541be (2020)
Xtriage (Phenix) : 1.13
EDS : 2.36
buster-report : 1.1.7 (2018)
Percentile statistics : 20191225.v01 (using entries in the PDB archive December 25th 2019)
Refmac : 5.8.0158
CCP4 : 7.0.044 (Gargrove)
Ideal geometry (proteins) : Engh & Huber (2001)
Ideal geometry (DNA, RNA) : Parkinson et al. (1996)
Validation Pipeline (wwPDB-VP) : 2.36

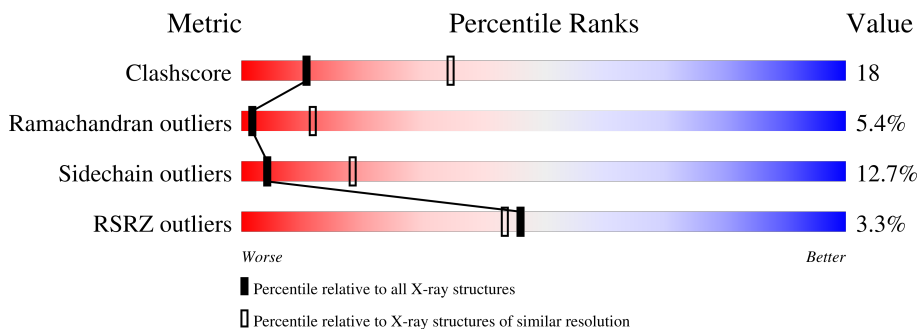
1 Overall quality at a glance

The following experimental techniques were used to determine the structure:

X-RAY DIFFRACTION

The reported resolution of this entry is 3.25 Å.

Percentile scores (ranging between 0-100) for global validation metrics of the entry are shown in the following graphic. The table shows the number of entries on which the scores are based.



Metric	Whole archive (#Entries)	Similar resolution (#Entries, resolution range(Å))
Clashscore	141614	1251 (3.30-3.22)
Ramachandran outliers	138981	1229 (3.30-3.22)
Sidechain outliers	138945	1228 (3.30-3.22)
RSRZ outliers	127900	1154 (3.30-3.22)

The table below summarises the geometric issues observed across the polymeric chains and their fit to the electron density. The red, orange, yellow and green segments of the lower bar indicate the fraction of residues that contain outliers for ≥ 3 , 2, 1 and 0 types of geometric quality criteria respectively. A grey segment represents the fraction of residues that are not modelled. The numeric value for each fraction is indicated below the corresponding segment, with a dot representing fractions $\leq 5\%$. The upper red bar (where present) indicates the fraction of residues that have poor fit to the electron density. The numeric value is given above the bar.

Mol	Chain	Length	Quality of chain
1	A	327	

2 Entry composition [i](#)

There are 3 unique types of molecules in this entry. The entry contains 2484 atoms, of which 0 are hydrogens and 0 are deuteriums.

In the tables below, the ZeroOcc column contains the number of atoms modelled with zero occupancy, the AltConf column contains the number of residues with at least one atom in alternate conformation and the Trace column contains the number of residues modelled with at most 2 atoms.

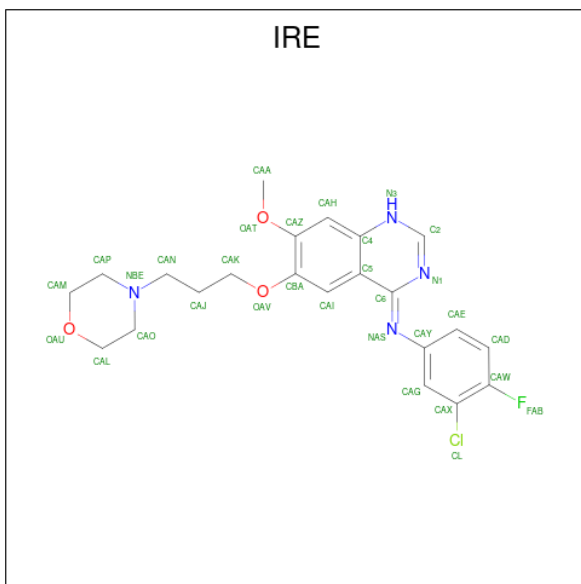
- Molecule 1 is a protein called EPIDERMAL GROWTH FACTOR RECEPTOR.

Mol	Chain	Residues	Atoms					ZeroOcc	AltConf	Trace
			Total	C	N	O	S			
1	A	303	2419	1553	404	444	18	0	0	0

There is a discrepancy between the modelled and reference sequences:

Chain	Residue	Modelled	Actual	Comment	Reference
A	719	SER	GLY	engineered mutation	UNP P00533

- Molecule 2 is Gefitinib (three-letter code: IRE) (formula: $C_{22}H_{24}ClFN_4O_3$).



Mol	Chain	Residues	Atoms					ZeroOcc	AltConf	
			Total	C	Cl	F	N			O
2	A	1	31	22	1	1	4	3	0	0

- Molecule 3 is water.

Mol	Chain	Residues	Atoms	ZeroOcc	AltConf
3	A	34	Total O 34 34	0	0

4 Data and refinement statistics i

Property	Value	Source
Space group	I 2 3	Depositor
Cell constants a, b, c, α , β , γ	142.93Å 142.93Å 142.93Å 90.00° 90.00° 90.00°	Depositor
Resolution (Å)	24.51 – 3.25 24.51 – 3.25	Depositor EDS
% Data completeness (in resolution range)	99.8 (24.51-3.25) 99.8 (24.51-3.25)	Depositor EDS
R_{merge}	0.09	Depositor
R_{sym}	(Not available)	Depositor
$\langle I/\sigma(I) \rangle$ ¹	4.03 (at 3.23Å)	Xtrriage
Refinement program	REFMAC 5.2.0019	Depositor
R, R_{free}	0.189 , 0.266 (Not available) , (Not available)	Depositor DCC
R_{free} test set	767 reflections (9.89%)	wwPDB-VP
Wilson B-factor (Å ²)	81.4	Xtrriage
Anisotropy	0.000	Xtrriage
Bulk solvent k_{sol} (e/Å ³), B_{sol} (Å ²)	0.33 , 47.4	EDS
L-test for twinning ²	$\langle L \rangle = 0.50$, $\langle L^2 \rangle = 0.33$	Xtrriage
Estimated twinning fraction	0.014 for -l,-k,-h	Xtrriage
F_o, F_c correlation	0.94	EDS
Total number of atoms	2484	wwPDB-VP
Average B, all atoms (Å ²)	75.0	wwPDB-VP

Xtrriage's analysis on translational NCS is as follows: *The largest off-origin peak in the Patterson function is 2.88% of the height of the origin peak. No significant pseudotranslation is detected.*

¹Intensities estimated from amplitudes.

²Theoretical values of $\langle |L| \rangle$, $\langle L^2 \rangle$ for acentric reflections are 0.5, 0.333 respectively for untwinned datasets, and 0.375, 0.2 for perfectly twinned datasets.

5 Model quality [i](#)

5.1 Standard geometry [i](#)

Bond lengths and bond angles in the following residue types are not validated in this section: IRE

The Z score for a bond length (or angle) is the number of standard deviations the observed value is removed from the expected value. A bond length (or angle) with $|Z| > 5$ is considered an outlier worth inspection. RMSZ is the root-mean-square of all Z scores of the bond lengths (or angles).

Mol	Chain	Bond lengths		Bond angles	
		RMSZ	# Z >5	RMSZ	# Z >5
1	A	0.72	0/2468	0.79	0/3340

There are no bond length outliers.

There are no bond angle outliers.

There are no chirality outliers.

There are no planarity outliers.

5.2 Too-close contacts [i](#)

In the following table, the Non-H and H(model) columns list the number of non-hydrogen atoms and hydrogen atoms in the chain respectively. The H(added) column lists the number of hydrogen atoms added and optimized by MolProbity. The Clashes column lists the number of clashes within the asymmetric unit, whereas Symm-Clashes lists symmetry-related clashes.

Mol	Chain	Non-H	H(model)	H(added)	Clashes	Symm-Clashes
1	A	2419	0	2454	90	0
2	A	31	0	24	3	0
3	A	34	0	0	1	0
All	All	2484	0	2478	90	0

The all-atom clashscore is defined as the number of clashes found per 1000 atoms (including hydrogen atoms). The all-atom clashscore for this structure is 18.

All (90) close contacts within the same asymmetric unit are listed below, sorted by their clash magnitude.

Atom-1	Atom-2	Interatomic distance (Å)	Clash overlap (Å)
1:A:712:PHE:HB2	1:A:730:LEU:O	1.81	0.80

Continued on next page...

Continued from previous page...

Atom-1	Atom-2	Interatomic distance (Å)	Clash overlap (Å)
1:A:793:MET:H	2:A:2020:IRE:H3	1.31	0.78
1:A:737:LYS:O	1:A:737:LYS:HG3	1.90	0.70
1:A:766:MET:HB3	1:A:777:LEU:HB2	1.73	0.70
1:A:1018:ILE:HG13	1:A:1019:PRO:HD2	1.73	0.70
1:A:769:VAL:HG21	1:A:774:VAL:HG12	1.72	0.70
1:A:942:ASP:O	1:A:946:ILE:HD12	1.93	0.69
1:A:1007:MET:HA	1:A:1010:VAL:HG23	1.72	0.69
1:A:836:ARG:HD3	1:A:858:LEU:O	1.95	0.67
1:A:769:VAL:HG21	1:A:774:VAL:CG1	2.24	0.67
1:A:1007:MET:HA	1:A:1010:VAL:CG2	2.29	0.63
1:A:754:LYS:O	1:A:754:LYS:HD3	1.98	0.63
1:A:744:ILE:HG12	1:A:789:ILE:HG13	1.80	0.62
1:A:715:ILE:HG22	1:A:728:LYS:HG2	1.82	0.62
1:A:836:ARG:HG2	1:A:891:TYR:CD1	2.36	0.60
1:A:751:THR:HG22	1:A:751:THR:O	2.01	0.60
1:A:697:GLU:HA	1:A:697:GLU:OE1	2.02	0.60
1:A:1006:ASP:O	1:A:1007:MET:HB2	2.00	0.59
1:A:932:ARG:NH1	1:A:951:TRP:O	2.36	0.59
1:A:887:LEU:C	1:A:888:HIS:ND1	2.57	0.58
1:A:805:HIS:O	1:A:807:ASP:N	2.37	0.58
1:A:763:ALA:HB2	1:A:788:LEU:HD11	1.84	0.58
1:A:935:GLN:HA	1:A:944:TYR:CD2	2.40	0.57
1:A:877:PRO:O	1:A:881:MET:HG3	2.05	0.57
1:A:882:ALA:HA	1:A:898:TRP:CD2	2.42	0.55
1:A:1018:ILE:CG1	1:A:1019:PRO:HD2	2.36	0.55
1:A:932:ARG:HD2	1:A:951:TRP:HB3	1.88	0.54
1:A:721:GLY:O	1:A:748:ARG:NH2	2.38	0.54
1:A:849:GLN:N	1:A:849:GLN:OE1	2.40	0.54
1:A:897:VAL:O	1:A:900:TYR:HB3	2.08	0.54
1:A:712:PHE:HB3	1:A:731:TRP:HA	1.89	0.54
1:A:834:VAL:HG12	1:A:836:ARG:HG3	1.89	0.53
1:A:829:GLU:HA	1:A:893:HIS:CE1	2.44	0.53
1:A:942:ASP:N	1:A:942:ASP:OD1	2.40	0.53
1:A:1006:ASP:OD2	1:A:1008:ASP:HB2	2.10	0.52
1:A:882:ALA:HB1	1:A:884:GLU:OE2	2.09	0.51
1:A:955:ALA:HA	1:A:958:ARG:HD3	1.93	0.51
1:A:705:ARG:HG2	3:A:3003:HOH:O	2.11	0.50
1:A:766:MET:HE2	1:A:856:PHE:HD2	1.77	0.50
1:A:808:ASN:ND2	1:A:988:HIS:O	2.45	0.49
1:A:927:LEU:O	1:A:932:ARG:NH2	2.46	0.49
1:A:783:THR:OG1	1:A:784:SER:N	2.45	0.49

Continued on next page...

Continued from previous page...

Atom-1	Atom-2	Interatomic distance (Å)	Clash overlap (Å)
1:A:887:LEU:HB2	1:A:888:HIS:ND1	2.28	0.48
1:A:732:ILE:O	1:A:734:GLU:N	2.46	0.48
1:A:766:MET:CE	1:A:856:PHE:HD2	2.26	0.48
1:A:812:GLN:NE2	1:A:812:GLN:HA	2.29	0.48
1:A:829:GLU:HG3	1:A:893:HIS:CG	2.48	0.47
1:A:771:ASN:O	1:A:773:HIS:N	2.48	0.47
1:A:1007:MET:HG2	1:A:1010:VAL:HG21	1.97	0.47
1:A:781:CYS:HB3	1:A:787:GLN:HB2	1.98	0.46
1:A:834:VAL:CG1	1:A:836:ARG:HG3	2.45	0.46
1:A:730:LEU:HD23	1:A:730:LEU:HA	1.61	0.46
1:A:943:VAL:HG12	1:A:947:MET:CE	2.47	0.45
1:A:804:GLU:HG3	1:A:805:HIS:CD2	2.52	0.45
1:A:880:TRP:NE1	1:A:906:GLU:OE2	2.38	0.45
1:A:933:LEU:HD12	1:A:951:TRP:CH2	2.51	0.45
1:A:967:GLU:O	1:A:970:LYS:HB2	2.16	0.45
1:A:771:ASN:C	1:A:773:HIS:H	2.20	0.45
1:A:793:MET:HE1	1:A:846:LYS:HB2	1.99	0.45
1:A:878:ILE:CD1	1:A:886:ILE:HG23	2.47	0.45
1:A:900:TYR:O	1:A:904:VAL:HG23	2.17	0.45
1:A:793:MET:N	2:A:2020:IRE:H3	2.07	0.44
1:A:909:THR:HG22	1:A:936:PRO:HB3	1.99	0.44
1:A:697:GLU:OE1	1:A:697:GLU:CA	2.65	0.44
1:A:854:THR:HG23	1:A:855:ASP:N	2.33	0.44
1:A:918:ILE:H	1:A:918:ILE:HG12	1.60	0.44
1:A:771:ASN:C	1:A:773:HIS:N	2.72	0.44
1:A:924:SER:O	1:A:928:GLU:HB2	2.18	0.43
1:A:725:THR:HG21	1:A:727:TYR:CZ	2.54	0.43
1:A:887:LEU:O	1:A:888:HIS:ND1	2.52	0.43
1:A:730:LEU:HD23	1:A:741:PRO:HA	2.01	0.42
1:A:767:ALA:HB2	1:A:777:LEU:HD23	2.01	0.42
1:A:793:MET:O	2:A:2020:IRE:HAH	2.20	0.42
1:A:856:PHE:C	1:A:858:LEU:H	2.23	0.42
1:A:748:ARG:HH11	1:A:748:ARG:HB3	1.83	0.42
1:A:698:ALA:HA	1:A:699:PRO:HD2	1.82	0.42
1:A:952:MET:O	1:A:958:ARG:NH1	2.43	0.42
1:A:935:GLN:HA	1:A:944:TYR:CE2	2.55	0.42
1:A:740:ILE:O	1:A:742:VAL:HG13	2.20	0.41
1:A:837:ASP:OD1	1:A:877:PRO:HG3	2.19	0.41
1:A:805:HIS:C	1:A:807:ASP:H	2.24	0.41
1:A:982:GLN:H	1:A:982:GLN:CD	2.23	0.41
1:A:762:GLU:OE2	1:A:766:MET:HE1	2.20	0.41

Continued on next page...

Continued from previous page...

Atom-1	Atom-2	Interatomic distance (Å)	Clash overlap (Å)
1:A:700:ASN:C	1:A:700:ASN:HD22	2.24	0.41
1:A:757:LYS:HD3	1:A:758:GLU:HG2	2.03	0.40
1:A:773:HIS:HA	1:A:852:LYS:HG2	2.02	0.40
1:A:782:LEU:O	1:A:783:THR:C	2.60	0.40
1:A:829:GLU:O	1:A:832:ARG:N	2.54	0.40
1:A:737:LYS:O	1:A:737:LYS:CG	2.65	0.40
1:A:976:GLN:HE22	1:A:985:GLU:HB3	1.86	0.40

There are no symmetry-related clashes.

5.3 Torsion angles [i](#)

5.3.1 Protein backbone [i](#)

In the following table, the Percentiles column shows the percent Ramachandran outliers of the chain as a percentile score with respect to all X-ray entries followed by that with respect to entries of similar resolution.

The Analysed column shows the number of residues for which the backbone conformation was analysed, and the total number of residues.

Mol	Chain	Analysed	Favoured	Allowed	Outliers	Percentiles
1	A	297/327 (91%)	256 (86%)	25 (8%)	16 (5%)	2 12

All (16) Ramachandran outliers are listed below:

Mol	Chain	Res	Type
1	A	750	ALA
1	A	806	LYS
1	A	837	ASP
1	A	857	GLY
1	A	889	ARG
1	A	1003	ASP
1	A	783	THR
1	A	1004	GLU
1	A	1006	ASP
1	A	716	LYS
1	A	722	ALA
1	A	855	ASP
1	A	784	SER
1	A	715	ILE

Continued on next page...

Continued from previous page...

Mol	Chain	Res	Type
1	A	733	PRO
1	A	772	PRO

5.3.2 Protein sidechains [i](#)

In the following table, the Percentiles column shows the percent sidechain outliers of the chain as a percentile score with respect to all X-ray entries followed by that with respect to entries of similar resolution.

The Analysed column shows the number of residues for which the sidechain conformation was analysed, and the total number of residues.

Mol	Chain	Analysed	Rotameric	Outliers	Percentiles
1	A	267/288 (93%)	233 (87%)	34 (13%)	4 18

All (34) residues with a non-rotameric sidechain are listed below:

Mol	Chain	Res	Type
1	A	697	GLU
1	A	700	ASN
1	A	705	ARG
1	A	708	LYS
1	A	713	LYS
1	A	715	ILE
1	A	719	SER
1	A	725	THR
1	A	737	LYS
1	A	740	ILE
1	A	748	ARG
1	A	757	LYS
1	A	784	SER
1	A	804	GLU
1	A	832	ARG
1	A	833	LEU
1	A	844	LEU
1	A	858	LEU
1	A	866	GLU
1	A	876	VAL
1	A	878	ILE
1	A	884	GLU
1	A	892	THR
1	A	918	ILE

Continued on next page...

Continued from previous page...

Mol	Chain	Res	Type
1	A	941	ILE
1	A	942	ASP
1	A	952	MET
1	A	953	ILE
1	A	957	SER
1	A	960	LYS
1	A	985	GLU
1	A	986	ARG
1	A	1008	ASP
1	A	1017	LEU

Sometimes sidechains can be flipped to improve hydrogen bonding and reduce clashes. All (7) such sidechains are listed below:

Mol	Chain	Res	Type
1	A	700	ASN
1	A	756	ASN
1	A	791	GLN
1	A	805	HIS
1	A	812	GLN
1	A	893	HIS
1	A	976	GLN

5.3.3 RNA [i](#)

There are no RNA molecules in this entry.

5.4 Non-standard residues in protein, DNA, RNA chains [i](#)

There are no non-standard protein/DNA/RNA residues in this entry.

5.5 Carbohydrates [i](#)

There are no monosaccharides in this entry.

5.6 Ligand geometry [i](#)

1 ligand is modelled in this entry.

In the following table, the Counts columns list the number of bonds (or angles) for which Mogul statistics could be retrieved, the number of bonds (or angles) that are observed in the model and the number of bonds (or angles) that are defined in the Chemical Component Dictionary. The Link column lists molecule types, if any, to which the group is linked. The Z score for a bond length (or angle) is the number of standard deviations the observed value is removed from the expected value. A bond length (or angle) with $|Z| > 2$ is considered an outlier worth inspection. RMSZ is the root-mean-square of all Z scores of the bond lengths (or angles).

Mol	Type	Chain	Res	Link	Bond lengths			Bond angles		
					Counts	RMSZ	# Z > 2	Counts	RMSZ	# Z > 2
2	IRE	A	2020	-	34,34,34	1.34	3 (8%)	41,46,46	1.88	10 (24%)

In the following table, the Chirals column lists the number of chiral outliers, the number of chiral centers analysed, the number of these observed in the model and the number defined in the Chemical Component Dictionary. Similar counts are reported in the Torsion and Rings columns. '-' means no outliers of that kind were identified.

Mol	Type	Chain	Res	Link	Chirals	Torsions	Rings
2	IRE	A	2020	-	-	7/11/21/21	0/4/4/4

All (3) bond length outliers are listed below:

Mol	Chain	Res	Type	Atoms	Z	Observed(Å)	Ideal(Å)
2	A	2020	IRE	CAY-NAS	-5.22	1.33	1.42
2	A	2020	IRE	CAI-CBA	2.39	1.40	1.36
2	A	2020	IRE	CAH-CAZ	2.02	1.40	1.36

All (10) bond angle outliers are listed below:

Mol	Chain	Res	Type	Atoms	Z	Observed(°)	Ideal(°)
2	A	2020	IRE	N3-C2-N1	-5.29	120.41	128.68
2	A	2020	IRE	C2-N3-C4	5.07	122.39	115.40
2	A	2020	IRE	CAP-NBE-CAO	3.98	117.79	108.83
2	A	2020	IRE	C2-N1-C6	3.04	120.57	113.45
2	A	2020	IRE	OAT-CAZ-CBA	2.47	118.85	115.41
2	A	2020	IRE	C5-C4-N3	-2.37	118.87	122.44
2	A	2020	IRE	CAH-C4-N3	2.33	120.63	117.97
2	A	2020	IRE	OAT-CAZ-CAH	-2.31	122.25	125.24
2	A	2020	IRE	CAD-CAW-CAX	-2.23	119.30	121.32
2	A	2020	IRE	CAM-CAP-NBE	2.05	113.21	110.10

There are no chirality outliers.

All (7) torsion outliers are listed below:

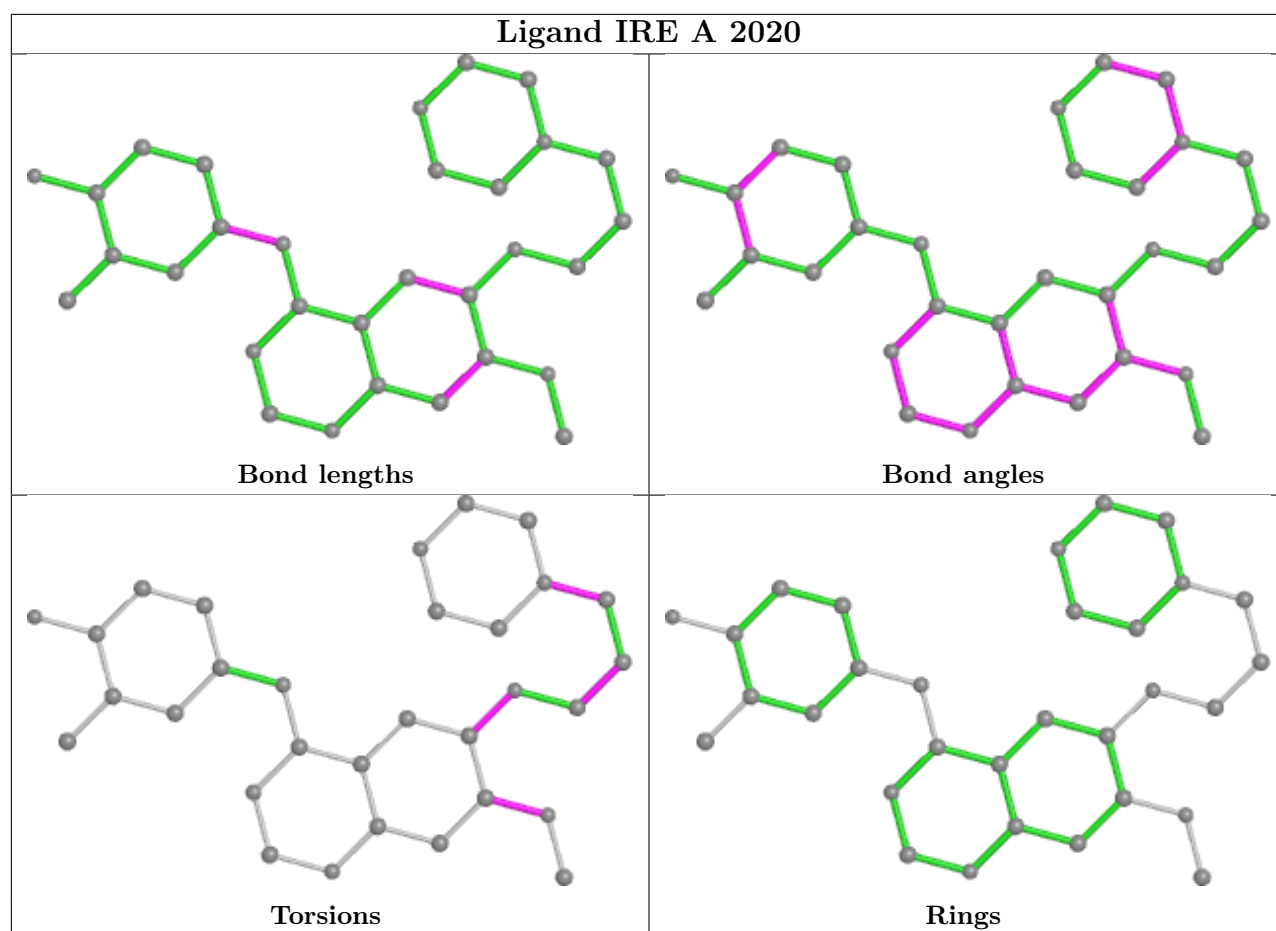
Mol	Chain	Res	Type	Atoms
2	A	2020	IRE	CAJ-CAN-NBE-CAO
2	A	2020	IRE	CBA-CAZ-OAT-CAA
2	A	2020	IRE	CAJ-CAN-NBE-CAP
2	A	2020	IRE	CAH-CAZ-OAT-CAA
2	A	2020	IRE	CAN-CAJ-CAK-OAV
2	A	2020	IRE	CAZ-CBA-OAV-CAK
2	A	2020	IRE	CAI-CBA-OAV-CAK

There are no ring outliers.

1 monomer is involved in 3 short contacts:

Mol	Chain	Res	Type	Clashes	Symm-Clashes
2	A	2020	IRE	3	0

The following is a two-dimensional graphical depiction of Mogul quality analysis of bond lengths, bond angles, torsion angles, and ring geometry for all instances of the Ligand of Interest. In addition, ligands with molecular weight > 250 and outliers as shown on the validation Tables will also be included. For torsion angles, if less than 5% of the Mogul distribution of torsion angles is within 10 degrees of the torsion angle in question, then that torsion angle is considered an outlier. Any bond that is central to one or more torsion angles identified as an outlier by Mogul will be highlighted in the graph. For rings, the root-mean-square deviation (RMSD) between the ring in question and similar rings identified by Mogul is calculated over all ring torsion angles. If the average RMSD is greater than 60 degrees and the minimal RMSD between the ring in question and any Mogul-identified rings is also greater than 60 degrees, then that ring is considered an outlier. The outliers are highlighted in purple. The color gray indicates Mogul did not find sufficient equivalents in the CSD to analyse the geometry.



5.7 Other polymers [i](#)

There are no such residues in this entry.

5.8 Polymer linkage issues [i](#)

There are no chain breaks in this entry.

6 Fit of model and data [i](#)

6.1 Protein, DNA and RNA chains [i](#)

In the following table, the column labelled '#RSRZ > 2' contains the number (and percentage) of RSRZ outliers, followed by percent RSRZ outliers for the chain as percentile scores relative to all X-ray entries and entries of similar resolution. The OWAB column contains the minimum, median, 95th percentile and maximum values of the occupancy-weighted average B-factor per residue. The column labelled 'Q < 0.9' lists the number of (and percentage) of residues with an average occupancy less than 0.9.

Mol	Chain	Analysed	<RSRZ>	#RSRZ>2	OWAB(Å ²)	Q<0.9
1	A	303/327 (92%)	-0.10	10 (3%) 46 43	46, 73, 112, 127	4 (1%)

All (10) RSRZ outliers are listed below:

Mol	Chain	Res	Type	RSRZ
1	A	723	PHE	3.5
1	A	863	GLY	3.1
1	A	750	ALA	3.1
1	A	749	GLU	2.6
1	A	988	HIS	2.6
1	A	722	ALA	2.5
1	A	862	LEU	2.5
1	A	1003	ASP	2.3
1	A	754	LYS	2.3
1	A	696	GLY	2.3

6.2 Non-standard residues in protein, DNA, RNA chains [i](#)

There are no non-standard protein/DNA/RNA residues in this entry.

6.3 Carbohydrates [i](#)

There are no monosaccharides in this entry.

6.4 Ligands [i](#)

In the following table, the Atoms column lists the number of modelled atoms in the group and the number defined in the chemical component dictionary. The B-factors column lists the minimum, median, 95th percentile and maximum values of B factors of atoms in the group. The column labelled 'Q < 0.9' lists the number of atoms with occupancy less than 0.9.

Mol	Type	Chain	Res	Atoms	RSCC	RSR	B-factors(\AA^2)	Q<0.9
2	IRE	A	2020	31/31	0.79	0.35	87,89,115,117	0

6.5 Other polymers [i](#)

There are no such residues in this entry.