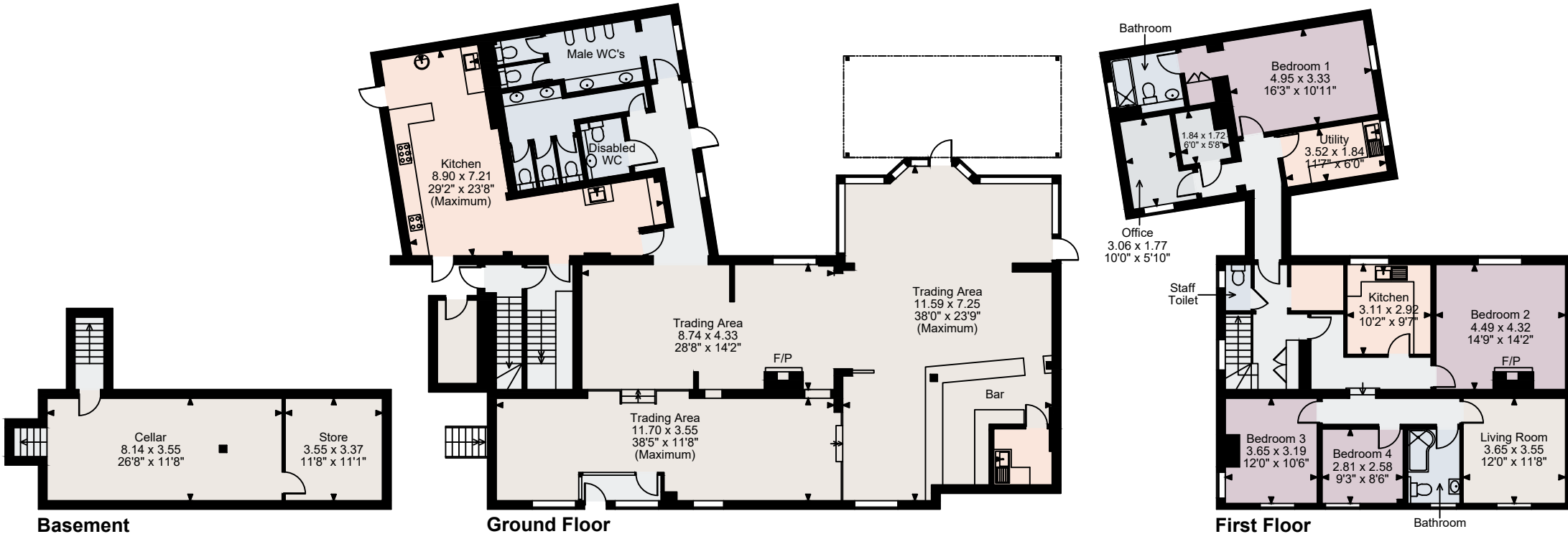


Castle, Oxford Road, Newbury
Basement internal area = 486 sq ft / 45 sq m
Ground floor internal area = 2,810 sq ft / 261 sq m
First floor internal area = 1,558 sq ft / 145 sq m
Total gross internal area = 4,854 sq ft / 451 sq m



FOR ILLUSTRATIVE PURPOSES ONLY - NOT TO SCALE

The position & size of doors, windows, appliances and other features are approximate only.

© ehouse. Unauthorised reproduction prohibited. Drawing ref. dig/8593226/JLW