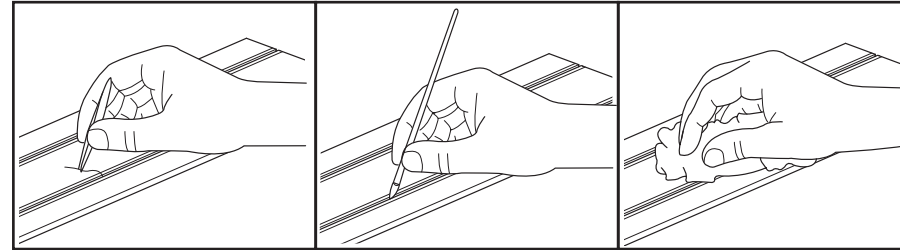




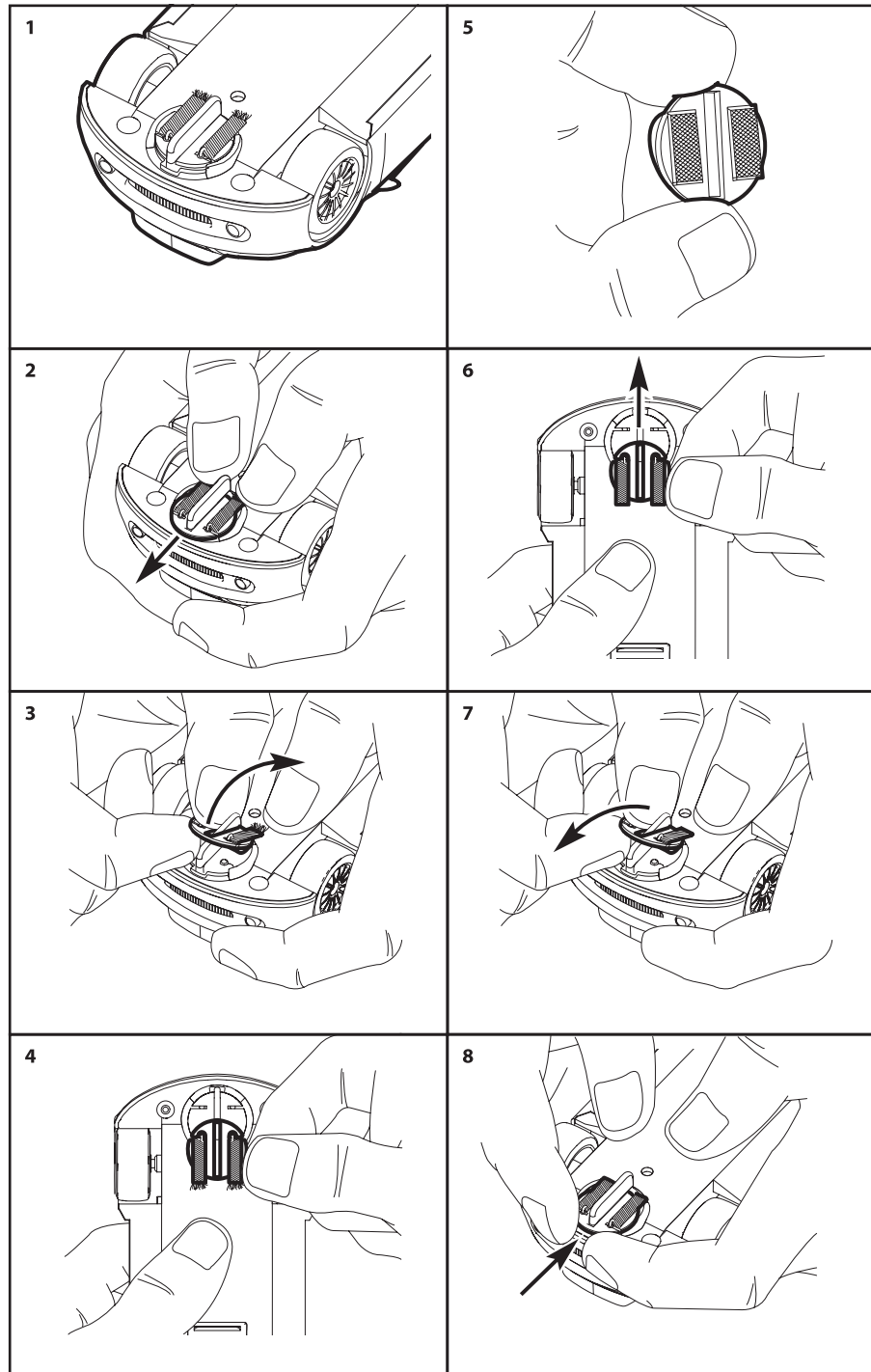
TRACK MAINTENANCE



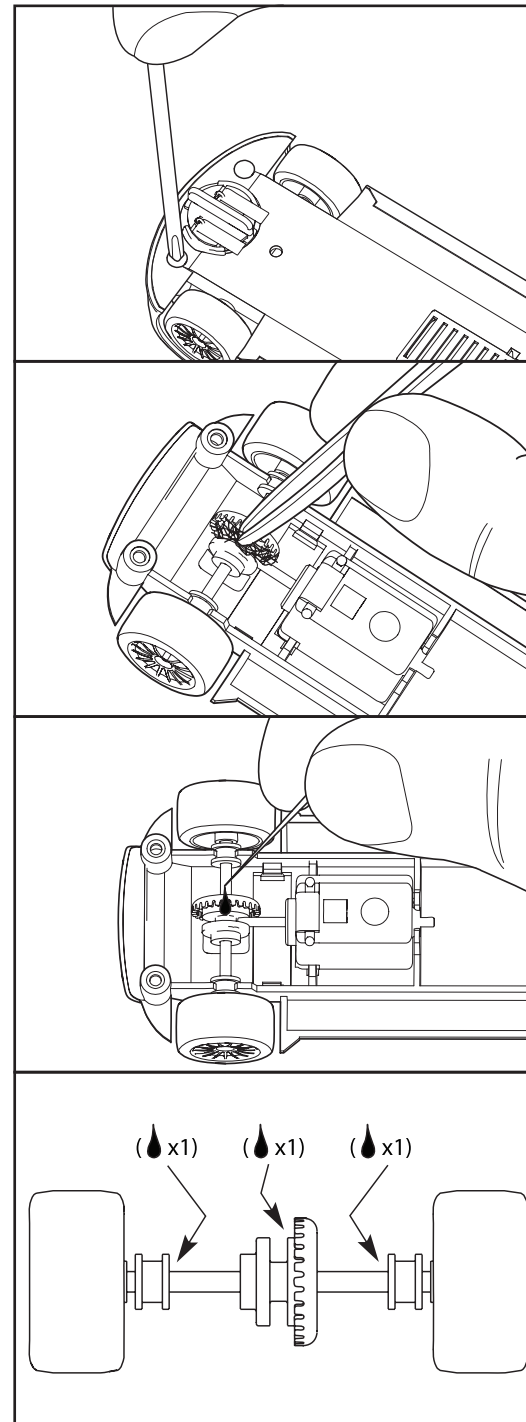
MAINTENANCE AND REPLACEMENT PARTS

Various spares and accessories are available from your Scalextric Dealer. Wheels and axles will need to be replaced as a complete assembly.  
 Maintenance and replacement of worn parts must be performed by an adult. The removed parts must be kept out of the reach of children.  
 A full list of Scalextric dealers is available on [www.scalextric-usa.com](http://www.scalextric-usa.com).  
 Two spare braid plates are included in this set. Further braid plates are available as spares pack C8312.

CHANGING THE BRAIDS



CAR MAINTENANCE



**IMPORTANT:**  
 Please read "Notes to Parents"

**CAUTION – ELECTRIC TOY**  
 NOT RECOMMENDED FOR CHILDREN UNDER 8 YEARS OF AGE. AS WITH ALL ELECTRIC PRODUCTS, PRECAUTIONS SHOULD BE OBSERVED DURING HANDLING AND USE TO PREVENT ELECTRIC SHOCK. INPUT: 120V – 60Hz – 16VA  
 OUTPUT: 15VDC – 1.2A

Set Instructions

IMPORTANT – NOTES TO PARENTS

- This product is not suitable for children under 3 years of age because of small parts which can present a choking hazard. Some components have functional sharp points and edges – handle with care.
- This product is intended for indoor use only.
- **If the electric motor in the car is jammed, remove the car from the track and let it cool down. Do not touch the motor casing.**
- The transformer is not a toy. It is a "Transformer for Toys". Before use, check that the transformer is the correct voltage for your mains electricity supply. This set is only to be used with the recommended transformer. The transformer should be examined regularly for damage to the casing, plug pins and cables. **In the event of such damage, the set should not be used until the transformer is replaced with a new Hornby recommended unit. Never attempt to open the transformer yourself.**
- When new, hand controllers may become warm, emit vapour and give off a slight smell. These effects are normal due to the protective coating on internal parts and will disappear after use. However, they may return if the trigger is held continuously in a fixed position while racing.
- Before cleaning any part, disconnect the transformer from the mains electricity supply. Do not use liquid for cleaning.
- Please retain these details and the address for future reference.

LIMITED 90-DAY WARRANTY USA & CANADA

This warranty applies only to products purchased and used in the United States or Canada. To activate your warranty, please complete and return the registration card included with your set within 30 days of purchasing this product. Please retain this warranty and your receipt of purchase from an authorized Scalextric dealer.  
 If the mechanisms of this product are found to be defective in materials or workmanship within 90 days from date of purchase, Hornby America shall undertake to either repair or replace the defective product free of charge. The decision whether to repair or replace the defective product is made by Hornby America at its sole discretion.  
 This warranty applies only for private non-commercial use by the original registered purchaser. Tamper, accident, abuse, negligence, unauthorized repairs or other causes, unrelated to defective materials or workmanship, will void this warranty. This warranty does not cover consumable parts. The rights specified in this warranty shall be the sole and exclusive remedy of the purchaser for any claim under the warranty. Implied warranties, including the implied warranty of merchantability, are limited in duration to a 90 day period from date of purchase and are subject to the conditions set out herein. Hornby America is not liable for incidental or consequential damages resulting from the breach of any express or implied warranties.  
 While this warranty gives you specific legal rights, you may also have other rights which vary from state to state and province to province.  
 The answers to many technical questions can be found on the Scalextric website [www.scalextric-usa.com](http://www.scalextric-usa.com). Please ensure that you have read the user instructions carefully. If you still have problems with your product, please contact:

**HORNBY AMERICA, INC. Telephone: 877-270-9429 Toll Free**  
**Email: [technicalsupport@hornby.us](mailto:technicalsupport@hornby.us)**

If our service representative is unable to resolve the problem by telephone or email, you may be instructed to return the product (freight prepaid) with your full details to:  
**HORNBY AMERICA INC, 3900-C2 INDUSTRY DRIVE EAST, FIFE, WA 98424, USA**  
 Prior authorization by Hornby America must be granted before returning any product. The repaired or replaced item will be returned to you freight prepaid (USA and Canada only) or made available to you for pick up at a convenient Scalextric dealer.

**WARNING: CHOKING HAZARD** Small parts. Not for children under 3 years.

**AGE 3 WATCH WITH ADULT SUPERVISION**  
**AGE 4-7 OPERATE WITH ADULT SUPERVISION**

**AGE**  
**8+**

