

### MAINTENANCE AND REPLACEMENT PARTS

Various spares and accessories are available from your Scalextric Service Dealer. Wheels and axles will need to be replaced as a complete assembly.

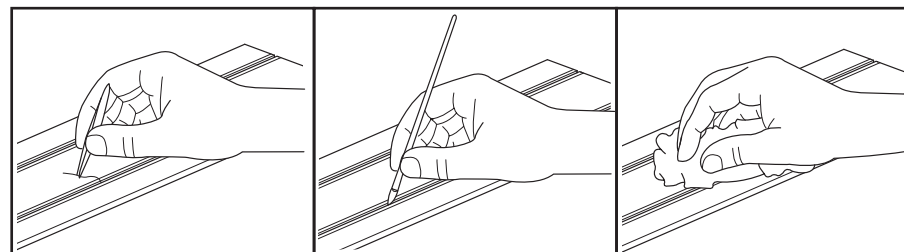
If in any doubt, contact your Scalextric Service Dealer or the Helpline for advice.

Maintenance and replacement of worn parts must be performed by an adult. The removed parts must be kept out of the reach of children.

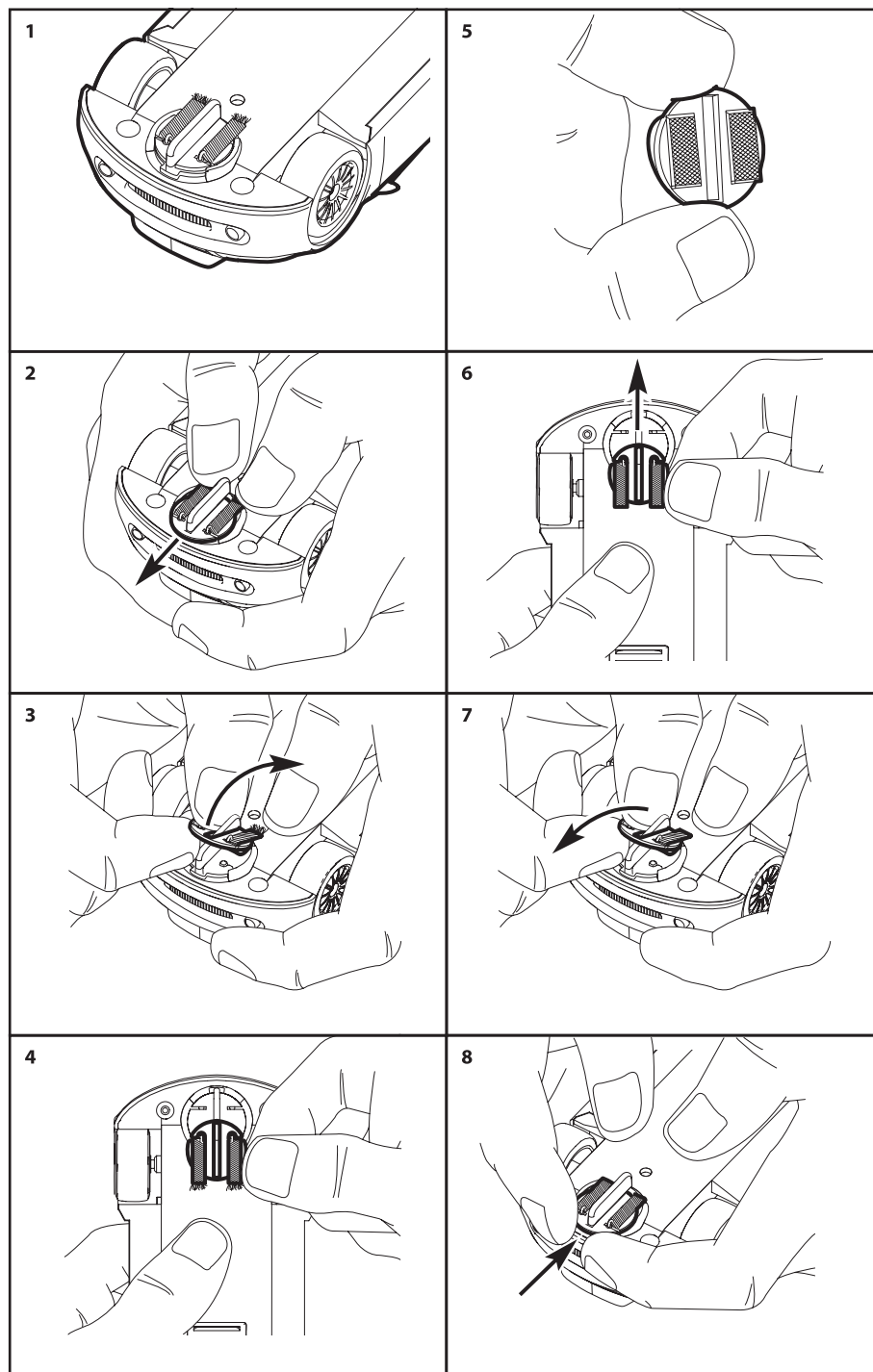
A full list of Scalextric service dealers is available on [www.scalextric.com](http://www.scalextric.com).

Two spare braid plates are included in this set. Further braid plates are available as spares pack C8312.

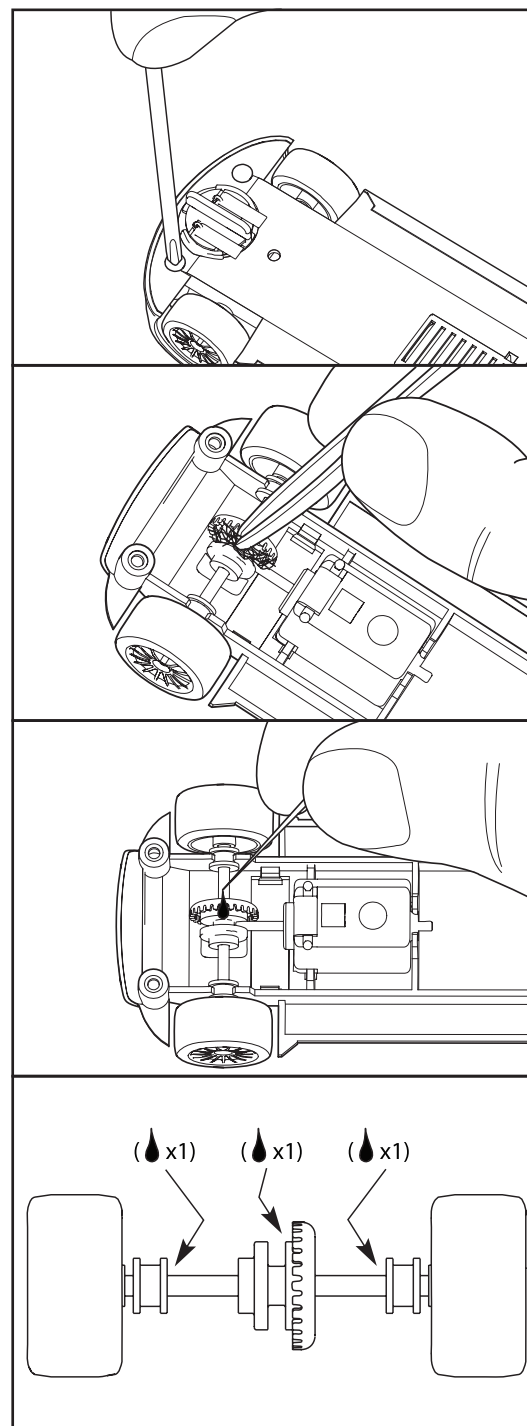
### TRACK MAINTENANCE



### CHANGING THE BRAIDS



### CAR MAINTENANCE



## Set Instructions

### Warning

### Safety Notes

- Not suitable for children under 3 years because:
  - of small parts which can present a choking hazard. Some components have functional sharp points and edges – handle with care.
  - misuse of a transformer can cause electrical shock.
  - misuse of the product may result in hot surfaces.

- This product is intended for indoor use only.
- If the electric motor in the car is jammed, remove the car from the track and let it cool down. Do not touch the motor casing
- The transformer is not a toy. It is a "Transformer for Toys". Before use, check that the transformer is the correct voltage for your mains electricity supply. This product should only be used with the transformer for toys included in this set. The transformer should be examined regularly for damage to the casing, plug pins and cables. In the event of such damage, the set should not be used until the transformer is replaced with a new Hornby recommended unit. Never attempt to open the transformer yourself.
- Refer to the label on the transformer included in this set for the transformer model number.
- This set must not be connected to more than the recommended number of power supplies. The output terminals of the transformer must not be connected directly, or indirectly, to the output of any other AC circuit derived from a transformer or mains power supply.
- Use only as indicated in the instructions. Do not modify or change any part of the set. Modification may damage the set and invalidate the warranty claim. Use only genuine Scalextric spares and accessories available from your retailer or [www.scalextric.com](http://www.scalextric.com).
- When new, hand controllers may become warm, emit vapour and give off a slight smell. These effects are normal due to the protective coating on internal parts and will disappear after use. However, they may return if the trigger is held continuously in a fixed position while racing.
- Before cleaning any part, disconnect the transformer from the mains electricity supply. Do not use liquid for cleaning.
- Please retain these details and the address for future reference.

### HORNBY PRODUCT GUARANTEE

Hornby products are guaranteed against defects in materials or workmanship for a period of six months from purchase.

To qualify for the guarantee, the product must have been used and maintained according to the manufacturers instructions.

If any such defect occurs during the period of guarantee then return to the address below or contact via [www.hornby.com](http://www.hornby.com) or [www.scalextric.com](http://www.scalextric.com) or phone 01843-233525.

A full list of Scalextric service dealers is available on [www.scalextric.com](http://www.scalextric.com).

Alternatively, the product (or component), may be forwarded to Hornby Hobbies Limited, carefully packed, with a covering letter enclosed giving full details to: Repairs Department, Hornby Hobbies Limited, Westwood, MARGATE, Kent CT9 4JX, United Kingdom

Please obtain a Certificate of Posting at the time of dispatch.

Subject to the exclusions below, the product will be repaired or replaced free of charge.

### Exclusions:

The fault has been caused or is attributable to mis-use, negligent use or used contrary to the manufacturers recommendations.

Accidental physical damage.

**This guarantee is valid for products purchased in the United Kingdom and is in addition to, and does not diminish, your statutory rights.**

**For further information about your statutory rights contact your local authority Trading Standards Department or Citizens' Advice Bureau.**

### CUSTOMER CARE

If you have a question that has not been answered in this leaflet then please contact Hornby Customer Care using any of the following methods:

**Phone us** Hornby Helpline: +44 (0) 1843233525

**Write to us** Hornby Hobbies Ltd, Westwood Industrial Estate, Margate, Kent CT9 4JX, United Kingdom

**Email us** [customer care@hornby.com](mailto:customer care@hornby.com)

**Internet** Alternatively, please check the Scalextric website for updates and frequently asked questions about Scalextric.

[www.scalextric.com](http://www.scalextric.com)

[www.hornbyamerica.com](http://www.hornbyamerica.com)



