

archinteriors

2014



Have you ever wanted to make professional interior renderings? Do you know how to use V-RaySun, V-RaySky and V-RayPhysicalCamera? Have you ever had problems with composition? Archexteriors will end all your problems. Take a look at this 10 fully textured scenes with professional shaders and lighting ready to render. Get your own portfolio and join cg market.



scene 01



Software and models © 2014 EVERMOTION. EVERMOTION logo is trademark or registered trademark of Evermotion Inc. in the U.S. and/or other countries. All rights reserved. All *.max and bitmaps models included on this collection with data are an integral part of „archinteriors vol.31” and the resale of this data is strictly prohibited. All models can be used for commercial purposes only by owners who bought this collection. The sharing of collection is strictly prohibited unless that user has written authorizati on from EVERMOTION.

archinteriors

2014



Have you ever wanted to make professional interior renderings? Do you know how to use V-RaySun, V-RaySky and V-RayPhysicalCamera? Have you ever had problems with composition? Archexteriors will end all your problems. Take a look at this 10 fully textured scenes with professional shaders and lighting ready to render. Get your own portfolio and join cg market.



scene 02



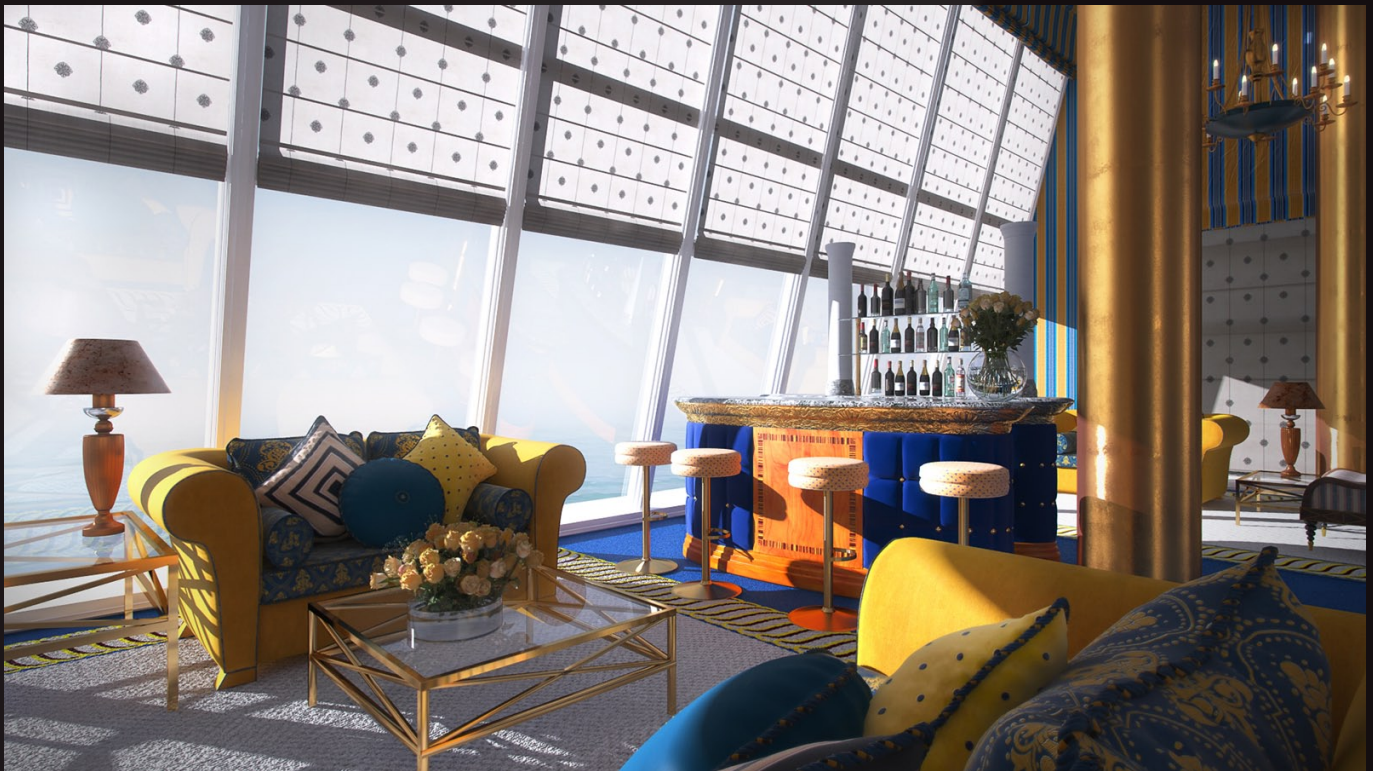
Software and models © 2014 EVERMOTION. EVERMOTION logo is trademark or registered trademark of Evermotion Inc. in the U.S. and/or other countries. All rights reserved. All *.max and bitmaps models included on this collection with data are an integral part of „archinteriors vol.31” and the resale of this data is strictly prohibited. All models can be used for commercial purposes only by owners who bought this collection. The sharing of collection is strictly prohibited unless that user has written authorizati on from EVERMOTION.

archinteriors

2014



Have you ever wanted to make professional interior renderings? Do you know how to use V-RaySun, V-RaySky and V-RayPhysicalCamera? Have you ever had problems with composition? Archexteriors will end all your problems. Take a look at this 10 fully textured scenes with professional shaders and lighting ready to render. Get your own portfolio and join cg market.



scene 03



Software and models © 2014 EVERMOTION. EVERMOTION logo is trademark or registered trademark of Evermotion Inc. in the U.S. and/or other countries. All rights reserved. All *.max and bitmaps models included on this collection with data are an integral part of „archinteriors vol.31” and the resale of this data is strictly prohibited. All models can be used for commercial purposes only by owners who bought this collection. The sharing of collection is strictly prohibited unless that user has written authorizati on from EVERMOTION.

archinteriors

2014



Have you ever wanted to make professional interior renderings? Do you know how to use V-RaySun, V-RaySky and V-RayPhysicalCamera? Have you ever had problems with composition? Archexteriors will end all your problems. Take a look at this 10 fully textured scenes with professional shaders and lighting ready to render. Get your own portfolio and join cg market.



scene 04



Software and models © 2014 EVERMOTION. EVERMOTION logo is trademark or registered trademark of Evermotion Inc. in the U.S. and/or other countries. All rights reserved. All *.max and bitmaps models included on this collection with data are an integral part of „archinteriors vol.31” and the resale of this data is strictly prohibited. All models can be used for commercial purposes only by owners who bought this collection. The sharing of collection is strictly prohibited unless that user has written authorizati on from EVERMOTION.

archinteriors

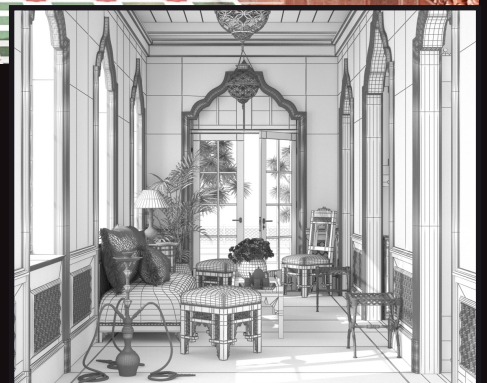
2014



Have you ever wanted to make professional interior renderings? Do you know how to use V-RaySun, V-RaySky and V-RayPhysicalCamera? Have you ever had problems with composition? Archexteriors will end all your problems. Take a look at this 10 fully textured scenes with professional shaders and lighting ready to render. Get your own portfolio and join cg market.



scene 05



Software and models © 2014 EVERMOTION. EVERMOTION logo is trademark or registered trademark of Evermotion Inc. in the U.S. and/or other countries. All rights reserved. All *.max and bitmaps models included on this collection with data are an integral part of „archinteriors vol.31” and the resale of this data is strictly prohibited. All models can be used for commercial purposes only by owners who bought this collection. The sharing of collection is strictly prohibited unless that user has written authorizati on from EVERMOTION.

archinteriors

2014



Have you ever wanted to make professional interior renderings? Do you know how to use V-RaySun, V-RaySky and V-RayPhysicalCamera? Have you ever had problems with composition? Archexteriors will end all your problems. Take a look at this 10 fully textured scenes with professional shaders and lighting ready to render. Get your own portfolio and join cg market.



scene 06



Software and models © 2014 EVERMOTION. EVERMOTION logo is trademark or registered trademark of Evermotion Inc. in the U.S. and/or other countries. All rights reserved. All *.max and bitmaps models included on this collection with data are an integral part of „archinteriors vol.31” and the resale of this data is strictly prohibited. All models can be used for commercial purposes only by owners who bought this collection. The sharing of collection is strictly prohibited unless that user has written authorizati on from EVERMOTION.

archinteriors

2014



Have you ever wanted to make professional interior renderings? Do you know how to use V-RaySun, V-RaySky and V-RayPhysicalCamera? Have you ever had problems with composition? Archinteriors will end all your problems. Take a look at this 10 fully textured scenes with professional shaders and lighting ready to render. Get your own portfolio and join cg market.



scene 07



Software and models © 2014 EVERMOTION. EVERMOTION logo is trademark or registered trademark of Evermotion Inc. in the U.S. and/or other countries. All rights reserved. All *.max and bitmaps models included on this collection with data are an integral part of „archinteriors vol.31” and the resale of this data is strictly prohibited. All models can be used for commercial purposes only by owners who bought this collection. The sharing of collection is strictly prohibited unless that user has written authorization from EVERMOTION.

archinteriors

2014



Have you ever wanted to make professional interior renderings? Do you know how to use V-RaySun, V-RaySky and V-RayPhysicalCamera? Have you ever had problems with composition? Archexteriors will end all your problems. Take a look at this 10 fully textured scenes with professional shaders and lighting ready to render. Get your own portfolio and join cg market.



scene 08



Software and models © 2014 EVERMOTION. EVERMOTION logo is trademark or registered trademark of Evermotion Inc. in the U.S. and/or other countries. All rights reserved. All *.max and bitmaps models included on this collection with data are an integral part of „archinteriors vol.31” and the resale of this data is strictly prohibited. All models can be used for commercial purposes only by owners who bought this collection. The sharing of collection is strictly prohibited unless that user has written authorizati on from EVERMOTION.

archinteriors

2014



Have you ever wanted to make professional interior renderings? Do you know how to use V-RaySun, V-RaySky and V-RayPhysicalCamera? Have you ever had problems with composition? Archexteriors will end all your problems. Take a look at this 10 fully textured scenes with professional shaders and lighting ready to render. Get your own portfolio and join cg market.



scene 09



Software and models © 2014 EVERMOTION. EVERMOTION logo is trademark or registered trademark of Evermotion Inc. in the U.S. and/or other countries. All rights reserved. All *.max and bitmaps models included on this collection with data are an integral part of „archinteriors vol.31” and the resale of this data is strictly prohibited. All models can be used for commercial purposes only by owners who bought this collection. The sharing of collection is strictly prohibited unless that user has written authorization from EVERMOTION.

archinteriors

2014



Have you ever wanted to make professional interior renderings? Do you know how to use V-RaySun, V-RaySky and V-RayPhysicalCamera? Have you ever had problems with composition? Archexteriors will end all your problems. Take a look at this 10 fully textured scenes with professional shaders and lighting ready to render. Get your own portfolio and join cg market.



scene 10



Software and models © 2014 EVERMOTION. EVERMOTION logo is trademark or registered trademark of Evermotion Inc. in the U.S. and/or other countries. All rights reserved. All *.max and bitmaps models included on this collection with data are an integral part of „archinteriors vol.31” and the resale of this data is strictly prohibited. All models can be used for commercial purposes only by owners who bought this collection. The sharing of collection is strictly prohibited unless that user has written authorizati on from EVERMOTION.