

# archinteriors

2018



Have you ever wanted to make professional interior renderings? Do you know how to use V-RaySun, V-RaySky and V-RayPhysicalCamera? Have you ever had problems with composition? Archinteriors will end all your problems. Take a look at this 10 fully textured scenes with professional shaders and lighting ready to render. Get your own portfolio and join cg market.



scene 01 cam 01



scene 01 cam 01 wire

Software and models © 2018 EVERMOTION. EVERMOTION logo is trademark or registered trademark of Evermotion Inc. in the U.S. and/or other countries. All rights reserved. All \*.max, \*.obj, \*.fbx and bitmaps models included on this collection with data are an integral part of „archinteriors vol. 52” and the resale of this data is strictly prohibited. All models can be used for commercial purposes only by owners who bought this collection. The sharing of collection is strictly prohibited unless that user has written authorization from EVERMOTION.

# archinteriors

2018



Have you ever wanted to make professional interior renderings? Do you know how to use V-RaySun, V-RaySky and V-RayPhysicalCamera? Have you ever had problems with composition? Archinteriors will end all your problems. Take a look at this 10 fully textured scenes with professional shaders and lighting ready to render. Get your own portfolio and join cg market.



scene 01 cam 02



scene 01 cam 02 wire

Software and models © 2018 EVERMOTION. EVERMOTION logo is trademark or registered trademark of Evermotion Inc. in the U.S. and/or other countries. All rights reserved. All \*.max, \*.obj, \*.fbx and bitmaps models included on this collection with data are an integral part of „archinteriors vol. 52” and the resale of this data is strictly prohibited. All models can be used for commercial purposes only by owners who bought this collection. The sharing of collection is strictly prohibited unless that user has written authorization from EVERMOTION.

# archinteriors

2018



Have you ever wanted to make professional interior renderings? Do you know how to use V-RaySun, V-RaySky and V-RayPhysicalCamera? Have you ever had problems with composition? Archinteriors will end all your problems. Take a look at this 10 fully textured scenes with professional shaders and lighting ready to render. Get your own portfolio and join cg market.



scene 02 cam 01



scene 02 cam 01 wire

Software and models © 2018 EVERMOTION. EVERMOTION logo is trademark or registered trademark of Evermotion Inc. in the U.S. and/or other countries. All rights reserved. All \*.max, \*.obj, \*.fbx and bitmaps models included on this collection with data are an integral part of „archinteriors vol. 52” and the resale of this data is strictly prohibited. All models can be used for commercial purposes only by owners who bought this collection. The sharing of collection is strictly prohibited unless that user has written authorization from EVERMOTION.

# archinteriors

2018



Have you ever wanted to make professional interior renderings? Do you know how to use V-RaySun, V-RaySky and V-RayPhysicalCamera? Have you ever had problems with composition? Archinteriors will end all your problems. Take a look at this 10 fully textured scenes with professional shaders and lighting ready to render. Get your own portfolio and join cg market.



scene 02 cam 02



scene 02 cam 02 wire

Software and models © 2018 EVERMOTION. EVERMOTION logo is trademark or registered trademark of Evermotion Inc. in the U.S. and/or other countries. All rights reserved. All \*.max, \*.obj, \*.fbx and bitmaps models included on this collection with data are an integral part of „archinteriors vol. 52” and the resale of this data is strictly prohibited. All models can be used for commercial purposes only by owners who bought this collection. The sharing of collection is strictly prohibited unless that user has written authorization from EVERMOTION.

# archinteriors

2018



Have you ever wanted to make professional interior renderings? Do you know how to use V-RaySun, V-RaySky and V-RayPhysicalCamera? Have you ever had problems with composition? Archinteriors will end all your problems. Take a look at this 10 fully textured scenes with professional shaders and lighting ready to render. Get your own portfolio and join cg market.



scene 03 cam 01



scene 03 cam 01 wire

Software and models © 2018 EVERMOTION. EVERMOTION logo is trademark or registered trademark of Evermotion Inc. in the U.S. and/or other countries. All rights reserved. All \*.max, \*.obj, \*.fbx and bitmaps models included on this collection with data are an integral part of „archinteriors vol. 52” and the resale of this data is strictly prohibited. All models can be used for commercial purposes only by owners who bought this collection. The sharing of collection is strictly prohibited unless that user has written authorization from EVERMOTION.

# archinteriors

2018



Have you ever wanted to make professional interior renderings? Do you know how to use V-RaySun, V-RaySky and V-RayPhysicalCamera? Have you ever had problems with composition? Archinteriors will end all your problems. Take a look at this 10 fully textured scenes with professional shaders and lighting ready to render. Get your own portfolio and join cg market.



scene 03 cam 02



scene 03 cam 02 wire

Software and models © 2018 EVERMOTION. EVERMOTION logo is trademark or registered trademark of Evermotion Inc. in the U.S. and/or other countries. All rights reserved. All \*.max, \*.obj, \*.fbx and bitmaps models included on this collection with data are an integral part of „archinteriors vol. 52” and the resale of this data is strictly prohibited. All models can be used for commercial purposes only by owners who bought this collection. The sharing of collection is strictly prohibited unless that user has written authorization from EVERMOTION.

# archinteriors

2018



Have you ever wanted to make professional interior renderings? Do you know how to use V-RaySun, V-RaySky and V-RayPhysicalCamera? Have you ever had problems with composition? Archinteriors will end all your problems. Take a look at this 10 fully textured scenes with professional shaders and lighting ready to render. Get your own portfolio and join cg market.



scene 04 cam 01



scene 04 cam 01 wire

Software and models © 2018 EVERMOTION. EVERMOTION logo is trademark or registered trademark of Evermotion Inc. in the U.S. and/or other countries. All rights reserved. All \*.max, \*.obj, \*.fbx and bitmaps models included on this collection with data are an integral part of „archinteriors vol. 52” and the resale of this data is strictly prohibited. All models can be used for commercial purposes only by owners who bought this collection. The sharing of collection is strictly prohibited unless that user has written authorization from EVERMOTION.

# archinteriors

2018



Have you ever wanted to make professional interior renderings? Do you know how to use V-RaySun, V-RaySky and V-RayPhysicalCamera? Have you ever had problems with composition? Archinteriors will end all your problems. Take a look at this 10 fully textured scenes with professional shaders and lighting ready to render. Get your own portfolio and join cg market.



scene 04 cam 02



scene 04 cam 02 wire

Software and models © 2018 EVERMOTION. EVERMOTION logo is trademark or registered trademark of Evermotion Inc. in the U.S. and/or other countries. All rights reserved. All \*.max, \*.obj, \*.fbx and bitmaps models included on this collection with data are an integral part of „archinteriors vol. 52” and the resale of this data is strictly prohibited. All models can be used for commercial purposes only by owners who bought this collection. The sharing of collection is strictly prohibited unless that user has written authorization from EVERMOTION.



# archinteriors

2018



Have you ever wanted to make professional interior renderings? Do you know how to use V-RaySun, V-RaySky and V-RayPhysicalCamera? Have you ever had problems with composition? Archinteriors will end all your problems. Take a look at this 10 fully textured scenes with professional shaders and lighting ready to render. Get your own portfolio and join cg market.



scene 05 cam 01



scene 05 cam 01 wire

Software and models © 2018 EVERMOTION. EVERMOTION logo is trademark or registered trademark of Evermotion Inc. in the U.S. and/or other countries. All rights reserved. All \*.max, \*.obj, \*.fbx and bitmaps models included on this collection with data are an integral part of „archinteriors vol. 52” and the resale of this data is strictly prohibited. All models can be used for commercial purposes only by owners who bought this collection. The sharing of collection is strictly prohibited unless that user has written authorization from EVERMOTION.

# archinteriors

2018



Have you ever wanted to make professional interior renderings? Do you know how to use V-RaySun, V-RaySky and V-RayPhysicalCamera? Have you ever had problems with composition? Archinteriors will end all your problems. Take a look at this 10 fully textured scenes with professional shaders and lighting ready to render. Get your own portfolio and join cg market.



scene 05 cam 02



scene 05 cam 02 wire

Software and models © 2018 EVERMOTION. EVERMOTION logo is trademark or registered trademark of Evermotion Inc. in the U.S. and/or other countries. All rights reserved. All \*.max, \*.obj, \*.fbx and bitmaps models included on this collection with data are an integral part of „archinteriors vol. 52” and the resale of this data is strictly prohibited. All models can be used for commercial purposes only by owners who bought this collection. The sharing of collection is strictly prohibited unless that user has written authorization from EVERMOTION.

# archinteriors

2018



Have you ever wanted to make professional interior renderings? Do you know how to use V-RaySun, V-RaySky and V-RayPhysicalCamera? Have you ever had problems with composition? Archinteriors will end all your problems. Take a look at this 10 fully textured scenes with professional shaders and lighting ready to render. Get your own portfolio and join cg market.



scene 06 cam 01



scene 06 cam 01 wire

Software and models © 2018 EVERMOTION. EVERMOTION logo is trademark or registered trademark of Evermotion Inc. in the U.S. and/or other countries. All rights reserved. All \*.max, \*.obj, \*.fbx and bitmaps models included on this collection with data are an integral part of „archinteriors vol. 52” and the resale of this data is strictly prohibited. All models can be used for commercial purposes only by owners who bought this collection. The sharing of collection is strictly prohibited unless that user has written authorization from EVERMOTION.

# archinteriors

2018



Have you ever wanted to make professional interior renderings? Do you know how to use V-RaySun, V-RaySky and V-RayPhysicalCamera? Have you ever had problems with composition? Archinteriors will end all your problems. Take a look at this 10 fully textured scenes with professional shaders and lighting ready to render. Get your own portfolio and join cg market.



scene 06 cam 02



scene 06 cam 02 wire

Software and models © 2018 EVERMOTION. EVERMOTION logo is trademark or registered trademark of Evermotion Inc. in the U.S. and/or other countries. All rights reserved. All \*.max, \*.obj, \*.fbx and bitmaps models included on this collection with data are an integral part of „archinteriors vol. 52” and the resale of this data is strictly prohibited. All models can be used for commercial purposes only by owners who bought this collection. The sharing of collection is strictly prohibited unless that user has written authorization from EVERMOTION.

# archinteriors

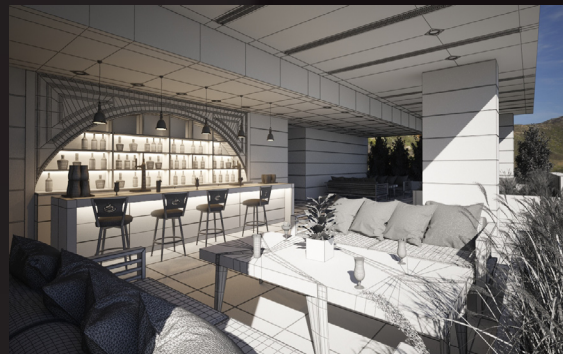
2018



Have you ever wanted to make professional interior renderings? Do you know how to use V-RaySun, V-RaySky and V-RayPhysicalCamera? Have you ever had problems with composition? Archinteriors will end all your problems. Take a look at this 10 fully textured scenes with professional shaders and lighting ready to render. Get your own portfolio and join cg market.



scene 07 cam 01



scene 07 cam 01 wire

Software and models © 2018 EVERMOTION. EVERMOTION logo is trademark or registered trademark of Evermotion Inc. in the U.S. and/or other countries. All rights reserved. All \*.max, \*.obj, \*.fbx and bitmaps models included on this collection with data are an integral part of „archinteriors vol. 52” and the resale of this data is strictly prohibited. All models can be used for commercial purposes only by owners who bought this collection. The sharing of collection is strictly prohibited unless that user has written authorization from EVERMOTION.

# archinteriors

2018



Have you ever wanted to make professional interior renderings? Do you know how to use V-RaySun, V-RaySky and V-RayPhysicalCamera? Have you ever had problems with composition? Archinteriors will end all your problems. Take a look at this 10 fully textured scenes with professional shaders and lighting ready to render. Get your own portfolio and join cg market.



scene 07 cam 02



scene 07 cam 02 wire

Software and models © 2018 EVERMOTION. EVERMOTION logo is trademark or registered trademark of Evermotion Inc. in the U.S. and/or other countries. All rights reserved. All \*.max, \*.obj, \*.fbx and bitmaps models included on this collection with data are an integral part of „archinteriors vol. 52” and the resale of this data is strictly prohibited. All models can be used for commercial purposes only by owners who bought this collection. The sharing of collection is strictly prohibited unless that user has written authorization from EVERMOTION.

# archinteriors

2018



Have you ever wanted to make professional interior renderings? Do you know how to use V-RaySun, V-RaySky and V-RayPhysicalCamera? Have you ever had problems with composition? Archinteriors will end all your problems. Take a look at this 10 fully textured scenes with professional shaders and lighting ready to render. Get your own portfolio and join cg market.



scene 08 cam 01



scene 08 cam 01 wire

Software and models © 2018 EVERMOTION. EVERMOTION logo is trademark or registered trademark of Evermotion Inc. in the U.S. and/or other countries. All rights reserved. All \*.max, \*.obj, \*.fbx and bitmaps models included on this collection with data are an integral part of „archinteriors vol. 52” and the resale of this data is strictly prohibited. All models can be used for commercial purposes only by owners who bought this collection. The sharing of collection is strictly prohibited unless that user has written authorization from EVERMOTION.

# archinteriors

2018



Have you ever wanted to make professional interior renderings? Do you know how to use V-RaySun, V-RaySky and V-RayPhysicalCamera? Have you ever had problems with composition? Archinteriors will end all your problems. Take a look at this 10 fully textured scenes with professional shaders and lighting ready to render. Get your own portfolio and join cg market.



scene 08 cam 02



scene 08 cam 02 wire

Software and models © 2018 EVERMOTION. EVERMOTION logo is trademark or registered trademark of Evermotion Inc. in the U.S. and/or other countries. All rights reserved. All \*.max, \*.obj, \*.fbx and bitmaps models included on this collection with data are an integral part of „archinteriors vol. 52” and the resale of this data is strictly prohibited. All models can be used for commercial purposes only by owners who bought this collection. The sharing of collection is strictly prohibited unless that user has written authorization from EVERMOTION.



# archinteriors

2018



Have you ever wanted to make professional interior renderings? Do you know how to use V-RaySun, V-RaySky and V-RayPhysicalCamera? Have you ever had problems with composition? Archinteriors will end all your problems. Take a look at this 10 fully textured scenes with professional shaders and lighting ready to render. Get your own portfolio and join cg market.



scene 09 cam 01



scene 09 cam 01 wire

Software and models © 2018 EVERMOTION. EVERMOTION logo is trademark or registered trademark of Evermotion Inc. in the U.S. and/or other countries. All rights reserved. All \*.max, \*.obj, \*.fbx and bitmaps models included on this collection with data are an integral part of „archinteriors vol. 52” and the resale of this data is strictly prohibited. All models can be used for commercial purposes only by owners who bought this collection. The sharing of collection is strictly prohibited unless that user has written authorization from EVERMOTION.

# archinteriors

2018



Have you ever wanted to make professional interior renderings? Do you know how to use V-RaySun, V-RaySky and V-RayPhysicalCamera? Have you ever had problems with composition? Archinteriors will end all your problems. Take a look at this 10 fully textured scenes with professional shaders and lighting ready to render. Get your own portfolio and join cg market.



scene 09 cam 02



scene 09 cam 02 wire

Software and models © 2018 EVERMOTION. EVERMOTION logo is trademark or registered trademark of Evermotion Inc. in the U.S. and/or other countries. All rights reserved. All \*.max, \*.obj, \*.fbx and bitmaps models included on this collection with data are an integral part of „archinteriors vol. 52” and the resale of this data is strictly prohibited. All models can be used for commercial purposes only by owners who bought this collection. The sharing of collection is strictly prohibited unless that user has written authorization from EVERMOTION.

# archinteriors

2018



Have you ever wanted to make professional interior renderings? Do you know how to use V-RaySun, V-RaySky and V-RayPhysicalCamera? Have you ever had problems with composition? Archinteriors will end all your problems. Take a look at this 10 fully textured scenes with professional shaders and lighting ready to render. Get your own portfolio and join cg market.



scene 10 cam 01



scene 10 cam 01 wire

Software and models © 2018 EVERMOTION. EVERMOTION logo is trademark or registered trademark of Evermotion Inc. in the U.S. and/or other countries. All rights reserved. All \*.max, \*.obj, \*.fbx and bitmaps models included on this collection with data are an integral part of „archinteriors vol. 52” and the resale of this data is strictly prohibited. All models can be used for commercial purposes only by owners who bought this collection. The sharing of collection is strictly prohibited unless that user has written authorization from EVERMOTION.

# archinteriors

2018



Have you ever wanted to make professional interior renderings? Do you know how to use V-RaySun, V-RaySky and V-RayPhysicalCamera? Have you ever had problems with composition? Archinteriors will end all your problems. Take a look at this 10 fully textured scenes with professional shaders and lighting ready to render. Get your own portfolio and join cg market.



scene 10 cam 02



scene 10 cam 02 wire

Software and models © 2018 EVERMOTION. EVERMOTION logo is trademark or registered trademark of Evermotion Inc. in the U.S. and/or other countries. All rights reserved. All \*.max, \*.obj, \*.fbx and bitmaps models included on this collection with data are an integral part of „archinteriors vol. 52” and the resale of this data is strictly prohibited. All models can be used for commercial purposes only by owners who bought this collection. The sharing of collection is strictly prohibited unless that user has written authorization from EVERMOTION.