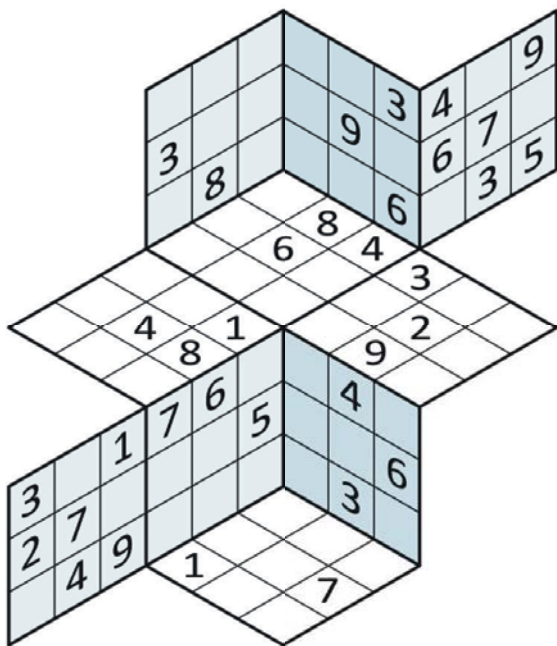


Samurai Sudoku No 962 — Medium

		5		4	6						1	2
		9	1						8			7
7			2	6	1				3	6	9	
	6	3				9			8	2		4
				7						1		5
1	4					6	8		1		9	6
		5	4	3							3	
								3	8			6
3			1								8	
											4	1
	8			2	6	1				7		3
												8
			8			4	8	3				
							9				4	
				4	2	7						
8	5	2		4	3				5	2	7	
1	9			2						5		1
												8
7	3		1			5	3				4	9
											6	
	8			1	3		2		2	8		6
												1
		7		8					5		2	
										6		
		1		7		4						2
												7
					6	9	3			3	5	2
						5						6
		3								8	4	
6		5							8	4		9



Tredoku

No 1876 — Hard

Tredoku is similar to Sudoku: the digits 1 to 9 must appear once only in each 3x3 box and in each line of nine consecutive cells. However, since the puzzle is three-dimensional, the lines may be straight or bent around angles. Follow each line's direction in search of clues.

Square Routes®

No 310 — Medium

Ian Simpson & Richard Heald

		*		*
*				
*		*		
			*	
*		*		*

CAMINO
WINDS
CLIENT
PELICAN
BRIEF
SYCAMORE
ROW

Put one letter in each cell so that each word on the right can be spelt out by moving from cell to cell without using diagonal moves. You can use a cell more than once in a word (including backtracking into a cell you've just used), but double letters (eg, the LL in ALL) must use two adjacent cells. The words start in the coloured cells and the vowels are shown by asterisks.

Sudoku No 15,608 — Fiendish

		5						9
		1						6
9	2				7			5
		4	1		5			
		9					2	3
		6					4	
		7						4
	7	9		8	2			
2				9				8

How to solve Sudoku. Fill the grid so that every column, every row and every 3x3 box contains the digits 1 to 9

Stuck on KenKen, Killer or Sudoku?

Call 0901 293 6263 before midnight to receive four clues for any of today's puzzles. Calls cost £1 plus your telephone company's network access charge. SP: Spoke, 0333 202 3390 (Mon-Fri 9am-5.30pm).

Killer No 9931 — Deadly

7			14			19			17	9		4
19						14						
		21	22						13			15
		22			7				13			
13						21						
		8			10				17		20	
6		11			10							21
		13	15			10						
						14						

Fill the grid so that every column, every row and every 3x3 box contains the digits 1 to 9. Each set of cells joined by dotted lines must add up to the target number in its top-left corner. Within each set of cells joined by dotted lines, a digit cannot be repeated. **For solutions to KenKen, Sudoku & Killer see Times2 on Monday**

KenKen No 6438 — Medium

90×				5+			12+
6+	6+						
	1-			30×			1-
9+	15+				5		
	5-			3÷		11+	
		4					

All the digits 1 to 6 must appear in every row and column. In each thick-line "block", the target number in the top left-hand corner is calculated from the digits in all the cells in the block, using the operation indicated by the symbol.

Cryptic Quintagram®

Solve all five cryptic clues using each letter underneath once only

1 Meat eaten by captive, a leg (4)

— — — —

2 One in suit to try tango (5)

— — — — —

3 Police officer Penny? (6)

— — — — — —

4 M25, say — test going round part (7)

— — — — — — —

5 Reconstruction of an earlobe's relatively cheap (10)

—	—	—	—	—	—	—	—	—	—
A	A	A	A	A	B	B	C		
E	E	E	E	E	H	I	L		
L	L	N	O	O	O	P	P		
R	R	R	R	S	T	T	V		

Word Watch

David Parfitt

Fizzenless

- a. Weak, ineffectual
- b. Anonymous
- c. Calm, sedate

Asterid

- a. A starfish
- b. A large meteor
- c. A contaminant

Uva

- a. A porous rock
- b. A grape
- c. A crab-eating mongoose

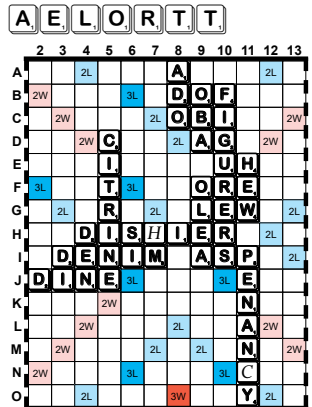
Hinky

- a. A hybrid equine
- b. A love bite
- c. Arousing suspicion

Scrabble® Paul Gallen

If your opponent plays a word that you know is invalid, it is generally recommended to challenge the word immediately. This is because the invalid tiles are removed from the board and the opponent registers no score for that turn. However, there are scenarios in which it may be justifiable to leave the word on the board for tactical reasons.

David Wiegand faced such a situation in a key game at the 2025 Crescent City Cup in New Orleans against the eventual tournament winner, Josh Castellano. Consider Wiegand's rack and the following extract of the board he faced.



Castellano had just played the invalid PENANCY* (IId). Wiegand was certain that the word

was not in the tournament word list. After careful consideration, he elected not to challenge, thus allowing Castellano to register 77 points for an invalid play. Wiegand's logic was that Castellano's move provided a useful floating letter for his rack. If Wiegand had challenged, he would have been left with no opportunities to score well on the board.

After accepting PENANCY*, Wiegand responded with the excellent TETRONAL (M6a) for 70 points to take a narrow lead. Can you find his 60-point alternative?

Wiegand's choice created considerable debate, with some players arguing that he should have challenged the word on the basis that it would have knocked his opponent's confidence for the remainder of the game.

Consider the main board diagram below. Imagine your opponent has just played the invalid RANULAE* (Lla), declaring the score as 68 points. Your rack is as follows:



Would you challenge the word? If not, what is the best play available?

Definitions
TETRONAL a sedative drug
YEBO a South African expression of affirmation

Collins Official Scrabble Words is the word authority used. Word positions use the grid reference plus (a)cross or (d)own.

2L double letter square (dl) 3L triple letter square (tl) 2W double word square (dw) 3W triple word square (tw)

Letter values
1 point: A, E, I, O, U, L, N, R, S, T
2 points: D, G
3 points: B, C, M, P
4 points: F, H, V, W, Y
K = 5
J, X = 8
Q, Z = 10

SCRABBLE® is a registered trademark of J. W. Spear & Sons Ltd ©Mattel 2025

Chess David Howell

Small Margins

A thrilling sudden death play-off decided the 2025 Tata Steel Masters. After 13 long rounds of classical chess, Rameshbabu Pragganandhaa and the new world champion, Gukesh D, finished first equal with 8.5 points. In a blitz showdown between the two teenage Indian grandmasters, it was Pragganandhaa who eventually emerged triumphant.

For 19-year-old Pragganandhaa — or Pragg as he likes to be known — the result is a career highlight. His first supertournament victory comes after spending the past year in the shadow of his friend and compatriot Gukesh, whose performances have enthralled chess fans worldwide.

Pragg's journey to the Tata Steel Masters title was full of adversity and proved to be a rollercoaster of emotions. Needing a late-tournament three-game winning streak to catch up with the leading pack, he went into the final round neck-and-neck with Gukesh. Surprisingly, Gukesh lost quickly with the white pieces to Arjun Erigaisi. Only needing a draw to clinch first prize, Pragg found himself defending an unpleasant endgame against Germany's Vincent Keymer. A seven-hour session went to the wire, but Pragg eventually blundered in severe time trouble.

The best-of-two blitz tie-breaks started only 20 minutes after Pragg's classical defeat, while Gukesh had been able to rest for four hours. The first game duly went Gukesh's way, after he capitalised on a mistake from the exhausted Pragg — see today's Winning Move for this dramatic moment.

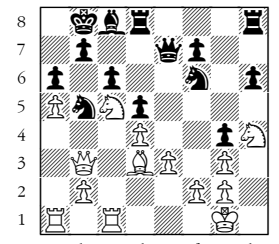
Miraculously, there was a reversal of fortune for Pragg in the must-win second game as he somehow found the energy to strike back. Then, in the first sudden death encounter — the chess equivalent of next goal wins — a reinvigorated Pragg pounced on a slip from the nervy Gukesh in a knight endgame.

Pragg produced one of the tournament's most spectacular games in Round 12.

White: Rameshbabu Pragganandhaa
Black: Alexei Sarana
Tata Steel Masters, Wijk aan Zee 2025
Queen's Gambit

1 d4 Nf6 2 c4 e6 3 Nc3 d5 4 exd5 exd5 5 Bg5 c6 6 Qc2 Be6 7 e3 Nbd7 8 Be2 A sophisticated idea, covering h5. 8 Bd3 h6 9 g5 9 Bg3 Nh5 would have allowed Black to hunt down the dark-squared bishop. 8...Bd6 9 Bd3 Modern chess at its finest. Pragg happily spends a full tempo on improving his bishop, hoping to provoke his opponent's response. 9...h6 10 Bh4 g5 Understandable aggression. 10...0-0 would allow the dangerous Pillsbury Attack formation with 11 f4, when White threatens to trap a piece with 12 f5. 11 Bg3 The point behind Pragg's earlier play becomes clear. Now Black is only able to exchange a bishop, rather than a knight, on this square. 11...Bxg3

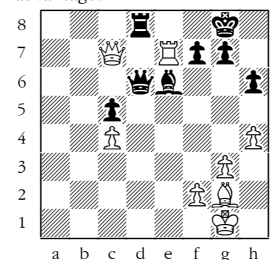
12 hxg3 Qe7 13 Nf3 g4? A strategic mistake. The white knight is forced onto the edge of the board, but from there it will control an entire flank and obstruct any counterplay that Black may later wish to conjure up. Better was the immediate 13...0-0-0 when White can no longer continue in the same way as the game, since 14 0-0? runs into 14...h5! 15 Nxc3 h4 with a promising kingside attack. 14 Nh4 Nb6 15 0-0 0-0-0 16 a4 Kb8 17 a5 Nc4 18 Na4 Nd6 19 Nc5 a6 20 Rfc1 Bc8 21 Qb3 Nb5? Cracking under pressure. This knight was needed to marshal the defences. 21...Ka8 was obligatory.



Opposite side castling often leads to positions where timing is everything. Pragg does not hesitate to initiate his attack. 22 Nxa6+! A crushing sacrifice, destroying the shelter around the black king. 22...bxa6 23 Rxc6 Rd7 24 Nf5 When sorrows come, they come in battalions. Another piece jumps into the action. 24...Qd8 25 Bxb5 axb5 26 a6 Ra7 27 Qxb5+ Ka8 28 Nd6 The square vacated by Black's knight on move 21 has been conquered by the enemy. 28...Bd7 Other moves are equally hopeless. Now comes a beautiful final blow. 29 Qb7+! **Black resigns** 29...Rxb7 30 axb7+ Kb8 31 Ra8 would be checkmate.

Winning Move

White to play. Gukesh-Pragganandhaa, Wijk aan Zee 2025. How can White obtain a decisive advantage?



The first correct entry drawn on Saturday wins *The Times Mindset Puzzles Book 1* and *The Sunday Times Teasers Book 2*. Two runners-up will receive a book prize. Answers on a postcard to: The Times Winning Move, PO Box 2164, Colchester, Essex CO2 8LJ, or email to: winningmove@thetimes.co.uk. Open to 18+, UK and ROI residents only. The answer will be published next Saturday.

Solution to last week's puzzle: 1 Rc8! wins (not 1 Rh8+? Kxh8 2 d8Q+ Kg7): 1...Rxb2+ 2 Kgl. White will make a new queen. The winner is Michael Radcliffe of London SW11. The runners-up are Peter Sargent of Grimsby, Lincolnshire, and Mark Horton of Shrewsbury, Shropshire.

Codeword No 5446

12	10	3	6	26	1		3	8	6	12	17	8		
8		8		6				13		4		13		
13	26	2			12	3	U	9	23	3	7	2	18	13
13		9			14			2		26				20
22	13	2	24		2	26	9	17	26	13	2	24		
13		12		12		26		18		6				13
		21	2	11	1	2	14	6	8	7				
13		13			1		5		5		21			18
7	2	20	2	9	17	3	18		12	18	17	15		
26					17		20		12		12			13
13	19	16	17	24	6	2	8	18		17	6	24		
12		3		6					6		1			25
12	4	26	3	5	13		9	26	13	13	22	13		

A B C D E F G H I J K L M N O P Q R S T U V W X Y Z

1	2	3	U	4	5	6	7	8	9	10	11	12	S	13
14	15	16		17	18	19	20	21	22	23	24	25	26	

Every letter in this crossword-style grid is represented by a number from 1 to 26. Each letter of the alphabet appears at least once. Use the letters already provided to work out further letters. Enter letters in the main grid and the smaller reference grid. Proper nouns are excluded.

Stuck on Codeword? To receive four random clues call 0901 293 6262 or text TIMECODE to 64343. Calls cost £1 plus your telephone company's network access charge. Texts cost £1 plus your standard network charge. For the full solution call 0905 757 0142. Calls cost £1 per minute plus your telephone company's network access charge. SP: Spoke, 0333 202 3390 (Mon-Fri, 9am-5.30pm).

times2 Crossword No 9762

		1		2		3		4		5		6		
	7													
8														
9								10						
11						12						13		
						14								
15								16			17			
										18				
19		20						21						
22														

Across

- 7 Readying of troops for active service (S, not Z) (12)
- 9 Most straightforward (7)
- 10 Synthetic fabric used to make leotards etc (5)
- 11 Domesticated (4)
- 12 Productive (8)
- 15 Wedlock (8)
- 17 This place (4)
- 19 Nation whose capital city is Kathmandu (5)

- 21 Parenthesis; support for a shelf (7)
- 22 Policy of putting an end to slavery (12)

Down

- 1 Very fine threads of spider silk (8)
- 2 Collier (5)
- 3 Resentful (6)
- 4 Detained unexpectedly or ambushed (7)
- 5 Metal employed in galvanisation (4)
- 6 Necessary consequences (11)
- 8 Mawkish, schmaltzy (11)
- 13 Completely out of the ordinary (8)
- 14 Evildoer (7)
- 16 Malevolent creature of folklore (6)
- 18 Canonised person (5)
- 20 Object for use in a play or film (4)

Solution to Crossword 9761

C	S	C	B	C	K									
B	A	I	T	O	P	E	R	A	T	I	C			
R	R	L	A	C	N									
O	R	D	E	A	L	M	I	K	A	D	O			
I	A	A	L											
R	A	N	K	P	R	I	M	E	V	A	L			
G	S	N		Q										
D	E	A	D	H	E	A	T	F	O	U	L			
	R	E	U	I										
E	F	F	O	R	T	N	E	R	O	L	I			
A	P	A	D	O	I									
R	I	D	I	C	U	L	E	R	U	N	E			
L	N	T	D	E	E									

Need help with today's puzzle? Call 0905 757 0143 to check the answers. Calls cost £1 per minute plus your telephone company's network access charge. SP: Spoke, 0333 202 3390 (Mon-Fri 9am-5.30pm).

Mindset by 700

1. What have I lost?

h f s b, t's b tha u, Ad u a t, Th ths that w t, th dstac u s, h 'v sad t uch, st t up, That's th c, That's th sptht, s ...

2. In a drawer I have 7 red ribbons, 12 blue ribbons, 17 green ribbons and an even larger number of yellow ribbons. **If I pick at random am I more, or less, likely to pick one of each colour in order red, blue, green, yellow, than in order yellow, green, blue, red, or is either order equally likely?**

3. Divide into threes:

BEIGE, CAMEL, CAVIARE, HOLST, ISLAND, LETTUCE, REASON, SLUT, TAUPE

One Question

Four Hints

How many will you need?

Try Quizle here



or at

thetimes.com/quizle
No subscription needed

The Listener Crossword No 4854 **Pickle** by Skylark

Senders of the first three correct entries drawn will receive *Brewer's Dictionary of Phrase and Fable* or may choose from a selection of other books (see below). Send your entry with contact details completed to: Listener Crossword 4854, 19 Fairfax Drive, Pontefract, WF8 1NU, to arrive by February 20.

1	2		3		4	5		6	7		8	9
		10		11			12					
13									14			
15					16							
		17				18	19					
20					21					22		
23					24			25		26		
	27		28	29			30	31			32	33
34						35						
36						37		38				
39				40				41				
		42										
43												

Prize options and more at listenercrossword.com

More information about Chambers books can be found at chambers.co.uk

Name.....
 Address.....
 Postcode..... Phone/email.....

In 15 clues a letter is misprinted (not in the definition); the corrections spell out a book's title. All other clues need a letter removed to enable solving; these letters spell out an instruction that solvers must follow after filling the grid. Solvers must highlight the narrator and a five-word phrase they use to describe their predicament (in parallel lines, 26 cells in total). *The Chambers Dictionary* (2016) is the primary reference; 19 is in the *Oxford Dictionary of English*.

- Across**
- 1 Police inspector's future involves cramp causing unease (13)
 - 11 Smith ceases over before Stokes gives up (7)
 - 13 Terrier toiled, gripping wingless bird (5)
 - 14 Spun, clown's to sway (4)
 - 15 Ed's planted first of roses in small valley to the west (5)
 - 16 Fuming if loco isn't available for leaving (8)
 - 17 Studies covering centre of neat dunes for local (5)
 - 19 Dutch idler craving Jewish toy (6)
 - 20 Recipe for corpse of fresh fish (5)
 - 21 Picture Kelvin's tray (4)
 - 23 Hand Mel section of story (6)
 - 25 Acquiring energy, wields greases (6)
 - 29 Muslim commander, averse to supply with thermonuclear warheads (4)
 - 31 Bachelor rants as fruit goes soft (5)
 - 34 Republicans rowed and bellowed (6)
 - 35 Kinder northern man's name (5)
 - 36 Drug in American aged pilgrims' bottles (8)
 - 38 Shrewd emergency room is more astute (5)
 - 39 Make defective marks plain (4)
 - 41 Trail in outskirts of Asia turns back carriage from its centre (5)
 - 42 Irritated, want chief to forget ache (7)
 - 43 Mad chess nerds vie, start to advocate separations (13)
- Down**
- 1 Clubs for vole among sundry gamblers (6)
 - 2 Greek island's critic, on vacation acting, raised voice (6)
 - 3 Rushes wildly, charges around one upset (7)
 - 4 Amidst broods, Ron prowls (6)
 - 5 Franco to censure provincial strike (4)
 - 6 Small deer rarely line up for shearing (3)
 - 7 Tease organic chemical examiner (6)
 - 8 Leader of units to pass university South American bird (6)
 - 9 Grand society welcoming topless spotter laughs (7)
 - 10 Crave to follow nail filings (7)
 - 12 Good trout perhaps son cuts once (6)
 - 18 Youth mistake area's mountain range (5)
 - 22 Answer Fry regarding catkin (7)
 - 23 Perturbed, pray in the middle of historic structure in Egypt? (7)
 - 24 Plotter in southern Germany edged along furtively (6)
 - 26 Possibly nippy kangaroo losing energy beginning to need protein (7)
 - 27 None supporting absurd Major's system for writing Japanese in our letters (6)
 - 28 Curly examines evacuated clots (6)
 - 30 Appearing in movie, awe Russian inspector (6)
 - 32 High-pitched male leaves GP shakily (6)
 - 33 Rough projections hang over bottom of chasm (6)
 - 37 Support cute liberal dons (4)
 - 40 Sue extremely elusive witness (3)

CORRECTION: *Listener 4853's fifth clue should read "Joint part shows this musical piece's inversion".*

Solutions

Friday's solutions

KenKen No 6437

5	6	3	2	1	4
4	5	2	6	3	1
2	1	6	3	4	5
1	3	4	5	6	2
3	2	1	4	5	6
6	4	5	1	2	3

Sudoku No 15,603

6	2	5	8	1	4	7	9	3
3	1	9	5	7	6	2	8	4
4	7	8	3	9	2	5	6	1
5	6	3	2	4	8	1	7	9
7	9	2	1	6	3	4	5	8
1	8	4	7	5	9	6	3	2
8	3	1	6	2	7	9	4	5
9	5	7	4	8	1	3	2	6
2	4	6	9	3	5	8	1	7

Sudoku No 15,604

3	9	2	4	8	1	7	6	5
7	4	1	6	5	9	8	2	3
8	6	5	3	2	7	4	9	1
6	5	3	8	7	4	9	1	2
2	1	7	9	6	5	3	8	4
9	8	4	1	3	2	6	5	7
5	2	9	7	4	8	1	3	6
4	3	8	2	1	6	5	7	9
1	7	6	5	9	3	2	4	8

Sudoku No 15,605

4	7	2	8	9	6	3	1	5
3	8	1	7	5	2	6	9	4
6	5	9	4	1	3	7	8	2
1	4	6	5	8	9	2	7	3
7	3	8	2	6	1	4	5	9
2	9	5	3	7	4	8	6	1
9	6	3	1	2	8	5	4	7
8	2	7	9	4	5	1	3	6
5	1	4	6	3	7	9	2	8

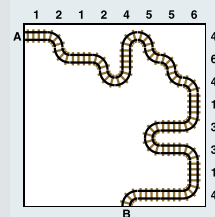
Killer No 9928

7	1	4	5	3	6	2	9	8
8	5	6	2	1	9	7	3	4
3	2	9	7	4	8	6	1	5
9	8	7	4	6	2	1	5	3
1	6	3	9	5	7	8	4	2
2	4	5	3	8	1	9	6	7
4	9	8	1	2	3	5	7	6
5	7	2	6	9	4	3	8	1
6	3	1	8	7	5	4	2	9

Killer No 9929

5	4	8	6	1	3	7	2	9
9	7	6	5	4	2	1	8	3
2	1	3	9	8	7	6	5	4
7	6	2	3	5	8	4	9	1
1	8	5	4	7	9	3	6	2
4	3	9	1	2	6	8	7	5
3	5	7	8	9	4	2	1	6
8	9	4	2	6	1	5	3	7
6	2	1	7	3	5	9	4	8

Train Tracks No 2470



Codeword No 5445

Q	F	U	I	E	O	G
U	N	E	X	P	O	S
I	R	R	O	L	I	I
B	O	N	A	N	Z	A
L	I	P	L	O	D	E
S	T	R	I	P	P	E
A	H	A	A	A	A	A
G	H	O	U	L	W	I
V	I	E	B	L	A	C
E	R	E	W	A	E	P

I	M	P	R	O	B	A	B	I	L	I	T	Y
N	I	U	E	P	L	E	O	N	A	S	T	E
L	A	R	G	E	I	T	R	S	G	O	H	L
A	S	P	L	A	N	D	S	C	A	P	E	D
?	.	.	.	?	.	.	.	?	.	.	.	?
C	O	S	E	T	S	K	L	N	S	T	A	N
L	W	T	C	A	T	S	I	T	T	H	I	G
O	N	U	S	M	A	I	N	R	O	A	D	S
N	E	R	U	P	T	D	G	E	N	D	E	R
E	D	E	N	S	E	E	D	F	E	R	N	S

The Listener
4851 loglog
by Botox
Extra words' outer letters gave "read grey cells; symbolise these one way, whites another". Grey cells

initially contained "Morse"; replacing grey/white cell contents with dash/dot respectively gave "last bus" in Morse code. *Last Bus to Woodstock* was the first Inspector Morse novel. Circles contained symbols "spoken" by the *Peanuts* character Woodstock, who was voiced by Bill Melendez. More details at listenercrossword.com. The winners are Peter Allwright of Alton, Hampshire; Graham Sills of Barrington, Cambridgeshire; Peter King of London SW13.

A	D	A	M	A	N	T	O	V	E	R	B	I	D	S	P	A	T	H	I	C	
C	S	G	R	U	E	E	E	T	M	O	A										
C	H	O	I	R	M	A	S	T	E	R	D	I	S	T	R	I	B	U	T	O	
O	C	E	M	R	I	F	A	E	E	E	E	L									
S	P	I	N	E	P	R	I	M	E	R	O	L	A	T	E	R	A	L	L	I	
T	A	M	G	R	I	C	L														
L	I	E	I	N	T	H	E	B	E	D	O	N	E	H	A	S	M	A	D	E	
C	N	O	T	E	I	E	O	L													
A	D	D	I	T	I	V	E	H	E	L	I	O	S	R	E	M	A	I	N	S	
T	I	E	I	K	G	A	E	F	I												
A	S	S	E	T	L	A	N	T	E	R	N	T	O	U	C	H	D	O	W	N	
R	A	O	L	T	E	O	I	P	O	R	I										
A	S	P	A	R	T	A	M	E	P	A	R	L	O	U	S	W	I	N	D	S	
C	P	O	R	E	A	N	T	I													
T	R	O	U	N	C	E	P	A	R	E	N	T	C	A	R	A	P	A	C	E	
I	T	G	L	C	M	R	N	R													
L	I	N	E	O	F	L	E	A	S	T	R	E	S	I	S	T	A	N	C	E	
Y	T	A	N	A	N	I	N	K													
R	A	I	N	D	A	N	C	E	B	E	T	W	I	X	T	E	A	G	L	E	
I	N	O	T	T	L	H	S	A	H	L	E										
C	O	G	N	O	M	I	N	A	T	E	I	N	T	E	G	R	A	T	I	O	N
A	L	U	N	R	A	N	E	U	L	S	E										
L	A	Y	E	T	T	E	Y	O	U	N	G	E	R	S	U	L	P	H	U	R	

Solution to Cryptic Jumbo 1714
The winner is RJ Kershaw of Sompting, West Sussex

C	A	S	T	I	N	G	T	A	P	I	O	C	A	T	A	C	I	T	U	S	
A	P	N	L	I	E	C	U	E	H	H	U										
S	A	I	N	T	G	E	O	R	G	E	T	E	T	R	A	H	E	D	R	O	N
B	N	E	A	E	V	A	O	F	A	E	B										
A	C	O	R	N	E	S	T	E	G	G	S	H	O	W	P	I	E	C	E		
H	Z	T	O	O	O	U	R	M	A												
A	M	I	D	S	U	M	M	E	R	N	I	G	H	T	S	D	R	E	A	M	
B	O	T	E	L	I	G	W	O	N												
A	B	S	E	N	T	E	E	B	E	F	O	R	E	O	U	T	L	I	N	E	
S	L	W	L	C	R	S	T	N	V												
S	L	A	N	G	I	N	E	R	T	I	A	T	E	R	M	I	N	A	T	E	
I	P	L	N	I	O	N	I	E	N	B	E	R									
N	O	S	T	A	L	G	I	C	R	E	G	R	O	U	P	G	L	O	R	Y	
E	T	C	E	A	E	N	L	A	O												
T	R	I	L	I	T	H	S	A	L	A	M	I	H	E	I	G	H	T	E	N	
C	A	E	T	A	E	T	A	E													
T	A	K	E	L	E	A	V	E	O	F	O	N	E	S	S	E	N	S	E	S	
Y	C	V	R	O	C	B	I	T													
P	H	O	N	E	T	I	C	S	R	O	S	E	A	T	E	O	L	D	I	E	
I	M	D	S	H	S	C	R	V	T	E	D										
C	R	E	D	I	B	I	L	I	T	Y	R	E	G	R	E	T	T	A	B	L	E
A	D	C	D	R	T	E	O	N	L	A	U										
L	A	Y	E	T	T	E	Y	O	U	N	G	E	R	S	U	L	P	H	U	R	

Solution to times2 Jumbo 1714
The winner is Lindsay Rutherford of Balerno, Midlothian

Cell Blocks 5328

4	2	3
4	6	6
2	3	
6	2	3
4	2	2

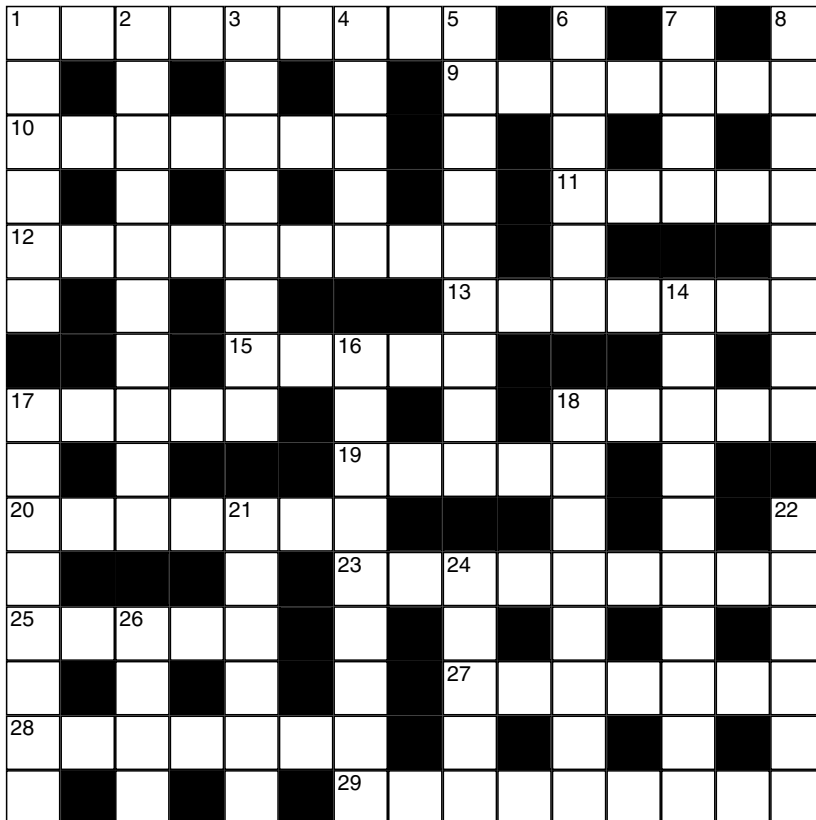
Suko 4347

7	8	4
30	24	
6	9	3
18	18	
2	1	5

Mindset 1. My Religion. The lyrics are the opening of *Losing My Religion*, by R.E.M., minus the letters in "My Religion". Original is: Oh life is bigger, It's bigger than you, And you are not me, The lengths that I will go to, The distance in your eyes, Oh no I've said too much, I set it up, That's me in the corner, That's me in the spot-light, Losing my religion.
2. Both orders are equally likely, as regardless of the order they are picked I end up with four which are one of each colour.
3. {BEIGE, CAMEL, TAUPE} — TAN colours; {CAVIARE (avarice), HOLST (sloth), SLUT (lust)} — anagrams of deadly SINS; {ISLAND, LETTUCE, REASON} — meanings of COS. SIN, COS, TAN are the principal trigonometric functions.

Word Watch
Fizzenless (a) Weak, ineffectual (*Collins*)
Asterid (a) A starfish (*Chambers*)
Uva (b) A grape (*OED*)
Hinky (c) Arousing suspicion (*Chambers*).
Polygon
coin, coir, cousin, curio, icon, incisor, incur, **incursion**, incus, inro, ionic, iris, iron, ironic, nisi, noir, noni, nori, nuncio, ricin, ronin, rosin, ruin, runic, scion, sonic, unicorn, union, unironic, unison.
Scrabble
TOLERANT (M5a); Keep RANULAE on the board and play the only bonus word HEADROOM (H1d) for 176 points.
Cryptic Quintagram
1 Veal 2 Heart 3 Copper 4 Orbital 5 Reasonable.

Times Crossword No 29,148



Across

- 1 Suspect clues introduced by agent matter fundamentally (9)
- 9 Catch on toilet sticks in this makeshift shelter (7)
- 10 Cross evacuated zone with military officers (7)
- 11 Acceptable charges overturned after tax reminder (5)
- 12 Hooter set in oil well blasted a couple of times (6,3)
- 13 European aircraft holding 100 men one could expel (7)
- 15 Single bit of evidence attorney put before Corporation (5)
- 17 Cheesy sauce over puff pastry for starters (5)
- 18 Head of Scotland Yard team (5)
- 19 Spirits guiding information I repeated (5)
- 20 Servant carrying too much soup (7)
- 23 Cardinal is essentially parish priest in red uniform (9)

- 25 Clobber worn by a bishop? (5)
- 27 Bush sheltering a river location where drinkers gather (7)
- 28 County Kerry condemned hard border (7)
- 29 IT execs affected by cut in US surcharge (6,3)

Down

- 1 Smuggler penning final letter in duplicate — it's at gunpoint (6)
- 2 Trap leaderless gangster parking in building site (7,3)
- 3 Cautious drawing in lad's daily (8)
- 4 Look to rope in quadruped with this? (5)
- 5 Groom's crazy about old flame (9)
- 6 Six day nurses run practice of excellence (6)
- 7 Adverse criticism of lakeside houses (4)
- 8 Cut off my daughter ringing up before noon (8)
- 14 Last header on target — own goal scored by United attack (5,2,3)
- 16 Silicon based mineral is a sort of geyserite (6-3)
- 17 Criminal perhaps might pinch one (8)
- 18 Sister keeping concept manuscript pieces close at hand (8)
- 21 National song book collection purloined by attention seeker (6)
- 22 Lout failing to start puzzle (6)
- 24 Her sweet drops could be like sugar-lumps (5)
- 26 American's ready for stag, perhaps (4)

Yesterday's solution 29,147

