

Sudoku Mild No 15,528

	8		5			3	9	
				9		2		8
	3		2			4		
							1	9
	5	7				8	4	
2	1							
		3			7		2	
1		5		3				
	7	8			4		5	

Fiendish No 15,529

						8	
6			9	2			
	3				9		5
2			4	3			9
1			2		3		6
8			1	9			7
	4				6		1
5			7	4			
						7	

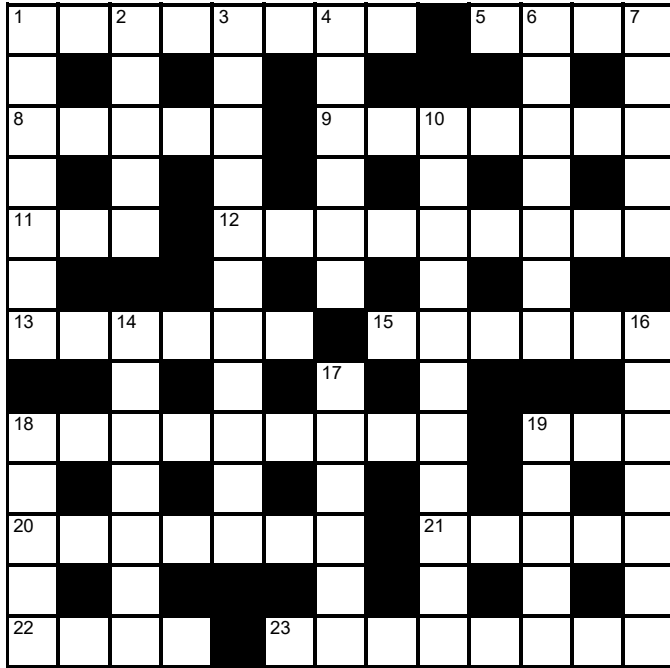
Super fiendish No 15,530

6	3			7			9	4
4		1		2	8			
		7	5		4			
9				6				5
			8		7	3		
			3	5		2		9
7	6			8			3	1

© PUZZLER MEDIA

Cluelines Stuck on Sudoku, Killer or KenKen? Call 0901 293 6263 before midnight to receive four clues for any of today's puzzles. Calls cost £1 plus your telephone company's network access charge. SP: Spoke, 0333 202 3390 (Mon-Fri 9am-5.30pm).

The Times Quick Cryptic No 2881 by Breadman



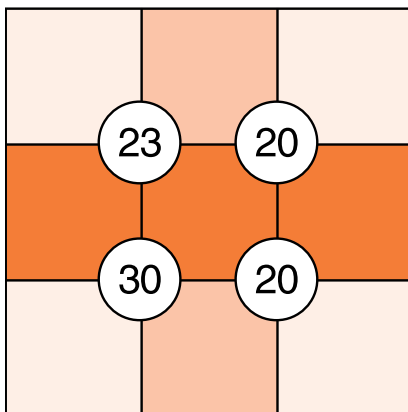
Across

- 1 Company ordered to keep extremely slow breed of sheep (8)
- 5 Goddess lives twice (4)
- 8 Remove dirt from lance frantically (5)
- 9 White insect hidden in foliage Tim retrieved from the rear (7)
- 11 Aged heads of organisation leave dutifully (3)
- 12 Heather tracks singular, stern type of footwear (9)
- 13 Complete set of religious books found in Ireland (6)
- 15 Line of punctuation initially helps you write about Henry (6)
- 18 The grime developed around a secluded abode (9)
- 19 Quietly welcome Greek character (3)
- 20 Mum and Georgia brought in stray horse of renown (7)
- 21 Pleased with English open space in woodland (5)
- 22 Charlie leaves a preliminary exam in a frenzy (4)
- 23 Tree unknown on northeastern island (8)

Down

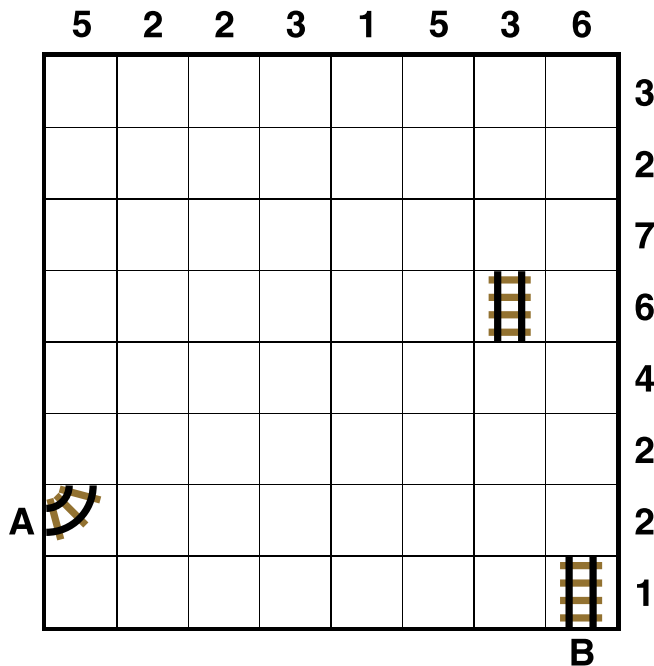
- 1 Violent storm in progress splitting bike (7)
- 2 Duke at the bottom of quaint British river (5)
- 3 Maybe activity in the main secure: daughter browsing the Net (11)
- 4 The French on journey behave uncontrollably (3,3)
- 6 Animated chap starts to notice inner strength — eating this veg? (7)
- 7 Cut small tree (5)
- 10 Public school blue regularly fit for sport (5,6)
- 14 Wreck games lesson after teacher finally stops commotion (7)
- 16 Artless character spoilt Evita in New York (7)
- 17 Comic actor Stan's wreath of honour (6)
- 18 Army beginning to approach plant (5)
- 19 Man on board catches right shellfish (5)

Suko No 4321



Place the numbers 1 to 9 in the spaces so that the number in each circle is equal to the sum of the four surrounding spaces, and each colour total is correct

Train Tracks No 2447



Lay tracks to enable the train to travel from village A to village B. The numbers indicate how many sections of track go in each row and column. There are only straight sections and curved sections. The track cannot cross itself.

Word watch David Parfitt

- Vang**
 a A rope attached to a ship's boom
 b Excellent, cool
 c A soldier at the front of a unit
- Acetabulum**
 a A cup to hold vinegar
 b A highly flammable gas
 c An enclosure for whales or dolphins
- Periapt**
 a An amulet
 b An itinerant teacher
 c The part of a fruit enclosing the seeds

Tetonor Tricky No 534

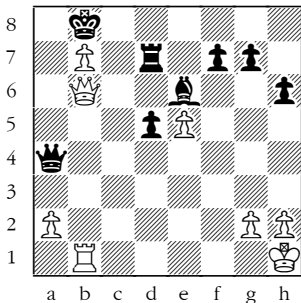
100	26	44	30
42	81	29	69
23	21	84	43
20	80	22	96

1	2	3	3		6		16	21			
---	---	---	---	--	---	--	----	----	--	--	--

When complete, the strip below the grid can be split into eight pairs of numbers. Adding the numbers in a pair gives one of the 16 numbers in the grid. Multiplying them gives a different number in the grid. For example, a 4 and 6 in the strip could be paired to make 10 (4+6) and 24 (4x6) in the grid. Enter each sum below the corresponding number in the grid. The blanks in the strip must be deduced, bearing in mind the numbers are listed in ascending order.

The next Tetonor puzzle will appear on Tuesday

Winning Move



Black to play. This position is from Beerdse-Esipenko, Titled Tuesday, chess.com 2024.

This is a slightly strange position. White is a piece down but clearly has compensation because of the passed pawn on b7 and vulnerable black king. However, although there aren't any immediate threats, it is very difficult for Black to untangle. Perhaps frustrated, Black played 1... Qc4. How did White reply?

Codeword No 5420

18	21	3	19	19	14		26	1	A	15	15	3	18
6		5		6		11		18	S		16		3
10	1	5	1	18	25	1		17	P	16	1	24	5
7		6		17		5		3		5		6	
5	4	16	18	6		8	1	10	21	12	1	24	
12				16		7				17		14	
	18	17	1	18	22		18	9	4	1	25		
11		16				5		4				6	
7	20	3	12	3	18	6		1	12	7	16	5	
20		22		12		16		5		18		13	
23	2	4	22	6		19	3	25	16	3	23	14	
4		2		1		14		4		6		22	
2	3	1	11	2	6		6	22	6	16	15	6	

⚡ B C D E F G H I J K L M N O P Q R S T U V W X Y Z

1	A	2	3	4	5	6	7	8	9	10	11	12	13		
14		15	16	17	P	S	18	19	20	21	22	23	24	25	26

Every letter in this crossword-style grid is represented by a number from 1 to 26. Each letter of the alphabet appears in the grid at least once. Use the letters already provided to work out the identity of further letters. Enter letters in the main grid and the smaller reference grid until all 26 letters of the alphabet have been accounted for. Proper nouns are excluded. *Yesterday's solution, right*

Cluelines **Stuck on Codeword?** To receive 4 random clues call 0901 293 6262 or text TIMECODE to 64343. Calls cost £1 plus your telephone company's network access charge. Texts cost £1 plus your standard network charge. For the full solution call 0905 757 0142. Calls cost £1 per minute plus your telephone company's network access charge. SP: Spoke, 0333 202 3390 (Mon-Fri, 9am-5.30pm).

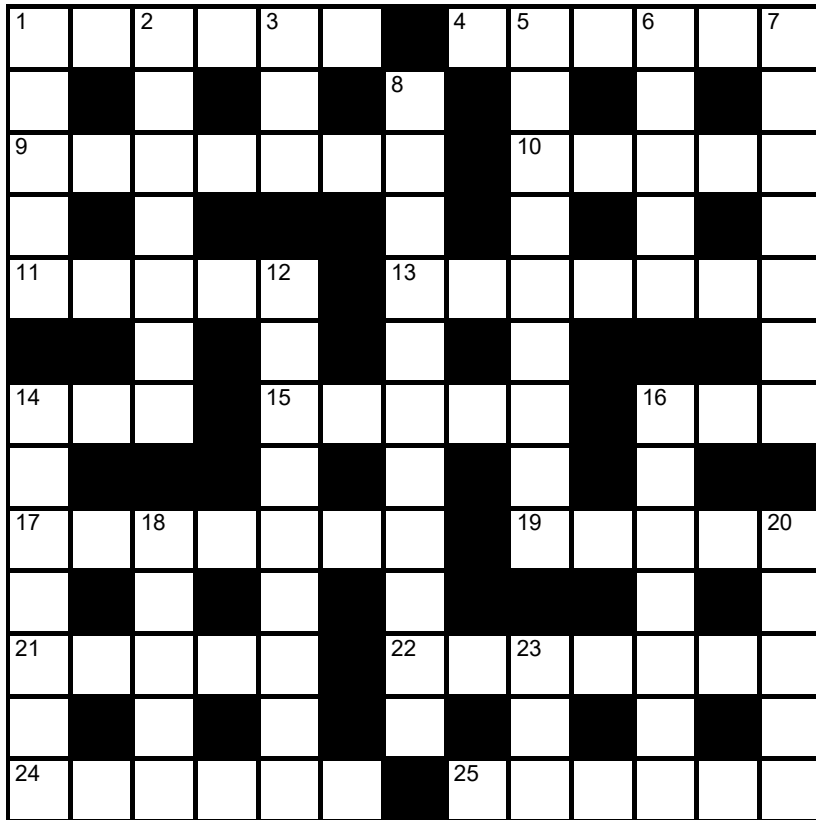
Lexica Easy No 7889

Hard No 7890

...	F	E	Z	R	S	R	C	E	T	A	S	E	...
●							●	●							B
...	N						G	L					E
...	T						G	O					T
...	R						A	G					L
...	A						W	O					X
...	L						S	E					D
...	●	P	I	I	T	E	G	I	G	N	N	T	...

Slide the letters either horizontally or vertically back into the grid to produce a completed crossword. Letters are allowed to slide over other letters

times2 Crossword No 9736



Across

- 1 Undertake an activity without serious interest (6)
- 4 Use mouthwash to cleanse the throat (6)
- 9 Eminent musician (7)
- 10 Group of fish (5)
- 11 Nude (5)
- 13 Feel uncomfortably hot (7)
- 14 Negative point (3)

- 15 Sphere or cube, eg (5)
- 16 Ingested (3)
- 17 Move downwards (7)
- 19 Large parrot (5)
- 21 Unit of gold purity (5)
- 22 Bare-chested (7)
- 24 One's impact on future generations (6)
- 25 Organic catalyst (6)

Solution to Crossword 9735



Down

- 1 Infernal creature (5)
- 2 Act of forced entry (5-2)
- 3 Illuminated (3)
- 5 Dutch capital city (9)
- 6 Obsolete English coin (5)
- 7 Expand, magnify (7)
- 8 Combine into one unit (11)
- 12 Suffering from indigestion (9)
- 14 Supplement to a will (7)
- 16 Target sport (7)
- 18 Gesture of indifference (5)
- 20 Needless use (5)
- 23 Sewing implement (3)

Need help with today's puzzle? Call 0905 757 0143 to check the answers. Calls cost £1 per minute plus your telephone company's network access charge. SP: Spoke, 0333 202 3390 (Mon-Fri 9am-5.30pm).

KenKen Difficult No 6412

1-		90×	7+		
2÷				9+	
3-		3-	2÷	15×	
10+					13+
	1-		90×		
2÷				4-	

All the digits 1 to 6 must appear in every row and column. In each thick-line "block", the target number in the top left-hand corner is calculated from the digits in all the cells in the block, using the operation indicated by the symbol.

© 2010 KENKEN PUZZLE & TIM NEXTOV, DIST. BY UPS, INC. WWW.KENKEN.COM

Futoshiki No 4960

<input type="text"/>	<input type="text"/>	<input type="text"/>	<	<input type="text"/>	<	<input type="text"/>
<input type="text"/>	<	<input type="text"/>	5	<input type="text"/>	<input type="text"/>	<input type="text"/>
<input type="text"/>	<input type="text"/>	>	<input type="text"/>	<input type="text"/>	<input type="text"/>	∨
5	<input type="text"/>	<input type="text"/>	>	<input type="text"/>	<input type="text"/>	<input type="text"/>
<input type="text"/>	3	<input type="text"/>	<input type="text"/>	<	<input type="text"/>	<input type="text"/>
<input type="text"/>	∧	<input type="text"/>	<input type="text"/>	<input type="text"/>	<input type="text"/>	<input type="text"/>
<input type="text"/>	<input type="text"/>	<input type="text"/>	<input type="text"/>	<input type="text"/>	<input type="text"/>	<input type="text"/>

Fill the blank squares so that every row and column contains each of the numbers 1 to 5 once only. The symbols between the squares indicate whether a number is larger (>) or smaller (<) than the number next to it.

Kakuro No 3919

	3	16		11	13		5	39	
11			4				13		6
5			11			18			
	12		10	21		12		12	
		5		35		17		15	
8	16	25		15					16
8			4	32					
32							14		
	27				11		4		
	15			13			19		
8			4	12		5			9
						16			
19				14			16		
	6			13			8		

© PUZZLER MEDIA

Fill the grid using the numbers 1 to 9 only. The numbers in each horizontal or vertical run of white squares add up to the total in the triangle to its left or above it. The same number may occur more than once in a row or column, but not within the same run of white squares.

Quintagram®

Solve all five cryptic clues using each letter underneath once only

- 1 Asian match in commentary? (4)
_ _ _ _
- 2 Smart police operation (5)
_ _ _ _ _
- 3 Run, jumping over nine fences (6)
_ _ _ _ _ _
- 4 Dark horse circling vehicle (7)
_ _ _ _ _ _ _
- 5 Expert professional with political power in shabby trench coat (10)
_ _ _ _ _ _ _ _ _ _

A	A	A	A	B	C	C	C
E	E	E	G	G	H	H	I
I	M	N	N	N	O	O	R
R	R	S	T	T	T	T	V

Brain Trainer

EASY	9	+7	x2	÷4	SQUARE IT	+6	70% OF IT	+13	50% OF IT	+16	ANSWER	
MEDIUM	105	+41	x2	-66	1/2 OF IT	x3	+56	60% OF IT	+75	x2	ANSWER	
HARDER	112	x6	75% OF IT	7/9 OF IT	x6	+782	+1/2 OF IT	-558	2/3 OF IT	-985	ANSWER	

Polygon



From these letters, make words of **four** or more letters, always including the central letter. Answers must be in the *Concise Oxford Dictionary*, excluding capitalised words, plurals, conjugated verbs (past tense etc), adverbs ending in LY, comparatives and superlatives.
How you rate 16 words, average; 22, good; 28, very good; 34, excellent

Yesterday's answers
 alky, aloo, balk, balky, bloop, bloopy, bolo, kola, lobo, look, loop, loopy, obol, opal, paly, play, **playbook**, plook, ploy, polka, polo, poly, pool, yolk

Cell Blocks No 5303

	2		3		
6	4	4		6	4
					5
			3		5
	2				
		5			

Divide the grid into square or rectangular blocks, each containing one digit only. Every block must contain the number of cells indicated by the digit inside it.

Set Square No 3922

8	x		x		= 160
x		x		x	
	-		+		= 8
+		+		-	
1	+		÷		= 2
=		=		=	
73		31		28	

Enter each of the numbers from 1 to 9 in the grid, so that the six sums work. We've placed two numbers to get you started. Each sum should be calculated left to right or top to bottom.

Please note, BODMAS does not apply

Killer Gentle No 9878

8	16		14	3	17			10
		11			16		17	
14	3		7			7		9
		16		27			7	
12				4	17			
5	12	16		21			15	
				10	12			
22		8			4			17
5			5		18			

Killer Tough No 9879

11	22		8			15		9
	3		25		22			
6		18				25		
	14				29	10		
		8						
28		20			11		11	
		11	18		7			14
					18		8	
34								

As with standard Sudoku, fill the grid so that every column, every row and every 3x3 box contains the digits 1 to 9. Each set of cells joined by dotted lines must add up to the target number in its top-left corner. Within each set of cells joined by dotted lines, a digit cannot be repeated.

Cluelines Stuck on Sudoku, Killer or KenKen? Call 0901 293 6263 before midnight to receive four clues for any of today's puzzles. Calls cost £1 plus your telephone company's network access charge. SP: Spoke, 0333 202 3390 (Mon-Fri 9am-5.30pm).

Times Crossword 29,122

1		2		3			4	5		6		7		8
					9									
10									11					
12				13								14		
15		16						17						
														18
	19				20		21							
22														
23				24								25		
26					27				28					
29								30						

ACROSS

- 1 Order check on empty surgery (6)
- 4 Extremely clever, my boss — I owe him (8)
- 10 Eventful game for the most part, with English heading for defeat (9)
- 11 Move back to accommodate old novelist (5)
- 12 Contraction initially impacting German debt adversely (11)
- 14 Close relation lives on benefits in the end (3)
- 15 Reporter's in contact with source on the way from France (2,5)
- 17 Nation somehow "discontented", PM concludes (6)
- 19 Republican party winning everything in race (6)
- 21 Millions in favour of trade union backing case for election (7)
- 23 Character seen in first part of book? (3)
- 24 Resolve differences: exonerate sole successor in hearing (5,3,3)
- 26 African native being ironic, you say? I disagree (5)
- 27 Dish his wife tries out (5,4)
- 29 Underworld boss losing millions in stock exchange crash perhaps (8)
- 30 Obsequious southern host entertaining maiden (6)

DOWN

- 1 Judges thus arresting conservative thinker (8)
- 2 Husband trapped by waters beginning to rise is cut off (5)
- 3 Wingless Madagascan creature — it can't fly (3)
- 5 Correct groom once again (7)
- 6 Sensible review of time on death row? (4-2-5)
- 7 Last of atheist philosopher's articles for union (9)
- 8 Turn down official employment (6)
- 9 Setting for *Oedipus Rex* film announced (6)
- 13 Two kisses signifying a betrayal? (6-5)
- 16 Facts about island's earliest broadcast (9)
- 18 A hothead, one sadly falling abroad (8)
- 20 Pressure on television channel to be in charge (7)
- 21 Boozy capacity of female briefly irritating (6)
- 22 Panic-stricken broadcast drops middle section (6)
- 25 Make modifications to 'arness (5)
- 28 Fringe uninspiring? On the contrary (3)

Yesterday's solution 29,121

C	Y	M	B	E	L	I	N	E	D	I	G	U	P	
A	A	R	N	X	E	O	L							
M	O	C	H	A	T	O	P	B	A	N	A	N	A	
U	H	S	A	E	R									
S	W	I	M	M	I	N	G	C	O	S	T	U	M	E
		A	U	D	T	I	N	M						
L	A	V	I	S	H	E	D	E	R	M	I	N	E	
O	E		M	F					N	N				
S	A	L	O	M	E		D	R	O	P	S	H	O	T
E	L	O	A	O	A	I								
F	L	I	B	B	E	R	T	I	G	I	B	B	E	T
A		R	C	D	N	I	U							
I	N	O	C	U	L	A	T	E	T	O	T	A	L	
T	A	L	N	U	E	E	L							
H	O	R	D	E		A	I	R	B	R	I	D	G	E

Check today's answers by ringing 0905 757 0141 by midnight. Calls cost £1 per minute plus your telephone company's network access charge. SP: Spoke 0333 202 3390.

Solutions

Quick Cryptic 2880

IMPROPTU BUS
 N R A A N L A
 CHICKEN DRAIN
 H M D A C G
 CABINETMAKER
 C N R A I
 COYOTE AGENDA
 A E E E E
 DRESSINGDOWN
 A N T D N E
 VODKA IMAGERY
 E O T N G S E
 ROW ENGROSSSED

Codeword 5419

ZOOLOGY PIQUE
 E R R O A U L
 SKINT GENUINE
 T E H U T V C
 FALCONRY JEST
 U D T F R
 LISSOM BOWYER
 W X P U E
 PRAY RHINITIS
 L D M Y T R T
 ODDNESS ALOOF
 N L A I V U
 KNELL CONGEAL

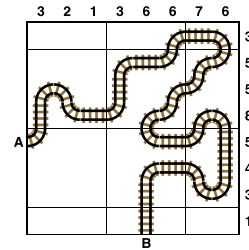
Kakuro 3918

		1	2	8		9	3	
6	3	7	8	9		8	2	9
8	1	6	9		2	4	5	1
	5	9		9	1	8	6	
7	2		1	6		1	3	9
9	8	4	7		9	5		5
		2	8	9	7		9	3
9	8	6	5	7		9	6	1
6	2	1				9	7	8
	9	8				7	3	1

Sudoku 15,525

1	8	2	5	3	7	4	9	6
9	7	5	6	4	1	2	8	3
3	4	6	9	2	8	5	7	1
5	3	4	2	7	6	8	1	9
2	6	1	8	9	5	7	3	4
8	9	7	4	1	3	6	2	5
7	5	3	1	8	4	9	6	2
4	1	9	7	6	2	3	5	8
6	2	8	3	5	9	1	4	7

Train Tracks 2446



Sudoku 15,526

6	3	1	4	2	7	9	8	5
8	2	7	3	9	5	1	4	6
5	9	4	6	8	1	3	2	7
4	6	3	8	1	9	7	5	2
9	7	5	2	6	3	8	1	4
2	1	8	5	7	4	6	3	9
7	5	9	1	3	2	4	6	8
3	4	6	9	5	8	2	7	1
1	8	2	7	4	6	5	9	3

Cell Blocks 5302

			5		
		6			2
3					
	2		2		6
		6			
		4	2		
		4	2		

Set Square 3921

7	+	4	×	6
+		+		-
8	+	2	-	1
×		+		×
3	×	9	+	5

Lexica 7887

	S		B		
	T	R	U	S	T
	R		Y		O
P	E	T			Y
	S				
U	S	E	F	U	L

Sudoku 15,527

5	9	3	1	8	2	4	6	7
1	7	6	9	4	5	3	2	8
2	8	4	7	6	3	1	5	9
6	5	9	2	7	1	8	3	4
8	3	2	4	5	9	7	1	6
4	1	7	6	3	8	5	9	2
9	4	5	8	1	6	2	7	3
3	6	8	5	2	7	9	4	1
7	2	1	3	9	4	6	8	5

Futoshiki 4959

4	3	1	2	5
5	>	4	2	3
3	1	5	>	4
2	5	>	3	1
1	<	2	4	5

KenKen 6411

2	3	4	6	1	5
5	1	6	3	2	4
1	2	3	4	5	6
3	4	2	5	6	1
4	6	5	1	3	2
6	5	1	2	4	3

Lexica 7888

G	L	A	R	E
	O		A	L
M	U	M	B	L
	D		B	A
			I	N
	H	A	T	

Today's solutions

Killer 9876

9	8	5	3	4	6	2	1	7
6	1	2	5	7	8	4	9	3
3	7	4	2	9	1	8	6	5
1	2	7	9	3	5	6	4	8
5	4	6	1	8	7	9	3	2
8	3	9	6	2	4	7	5	1
7	9	1	4	5	2	3	8	6
2	6	3	8	1	9	5	7	4
4	5	8	7	6	3	1	2	9

Killer 9877

8	7	3	4	6	2	1	5	9
4	9	2	5	1	8	7	3	6
1	6	5	9	7	3	8	4	2
3	5	1	7	4	9	2	6	8
7	2	6	8	5	1	4	9	3
9	8	4	2	3	6	5	1	7
6	3	8	1	2	5	9	7	4
2	1	7	3	9	4	6	8	5
5	4	9	6	8	7	3	2	1

Cryptic Quintagram

- 1 Thai
- 2 Sting
- 3 Govern
- 4 Macabre
- 5 Technocrat

Suko 4321

1	5	4
23	20	
9	8	3
30	20	
6	7	2

Brain Trainer

- Easy 47
- Medium 624
- Harder 1,777

Word watch

- Vang** (a) A rope attached to a ship's boom (*Collins*)
- Acetabulum** (a) A cup to hold vinegar (*OED*)
- Periapt** (a) An amulet (*OED*)

Chess – Winning Move

- 1 ... Qc4 is a blunder as protection of the a7-square is removed. White wins with 2 Qa7+! Kxa7 3 b8Q+ Ka6 4 Qb6 mate

Sudoku difficult

	3	4	7	8	2	1	
2							6
9			1	2	3		8
3	6					5	7
	5	8			7	9	
		5		7			
		3	9	6			

Killer deadly

Fill the grid so that every column, every row and every 3x3 box contains the digits 1 to 9. Each set of cells joined by dotted lines must add up to the target number in its top-left corner. Within each set of cells joined by dotted lines, a digit cannot be repeated.

16	12		24				17	
		10		20	10			
7		13			21		8	
18	10					14	8	5
		20		13				
	24			8		6	22	
		11	12				17	
			15	7		16		
8							13	

Suko

28	18	
23	16	

14	16	15
----	----	----

Place the numbers 1 to 9 in the spaces so that the number in each circle is equal to the sum of the four surrounding spaces, and each colour total is correct

Codeword

Every letter in the crossword-style grid, right, is represented by a number from 1 to 26. Each letter of the alphabet appears in the grid at least once. Use the letters already provided to work out the identity of further letters. Enter letters in the main grid and the smaller reference grid until all 26 letters of the alphabet have been accounted for. Proper nouns are excluded.

10	6	15	19	2	F	8	7		14	13	23	10	6
17		17		6			13		13		13		22
1	8	20	6	24		1	12	11	12	15	9	10	
9		10		14		17		12		21		13	
13	8	9	7	26	17	15	20		3	8	24	24	
24				6		20		25		12			
26	13	20	G	8	24	9		1	13	8	24	23	12
		24		19		25		24					5
24	8	17	15		22	6	23	16	6	23	10	12	
6		4		2		19		1		7		23	
22	8	4	4	6	24	19		10	12	6	24	9	
22		7		17		7		13		1		12	
17	19	26	7	7		12	18	3	13	1	12	19	

A B C D E F G H I J K L M N O P Q R S T U V W X Y Z

1	2	3	4	5	6	7	8	9	10	11	12	13
14	15	F										
				I		G						

Mini Sudoku

Fill in the grid so that every column, every row and every 3x2 box contains the digits 1 to 6

		3	5		
	5	6	2	4	
3					1
	4			2	

Solutions in Monday's Times2

THE  TIMES

MindGames Thursday January 9 2025
Brain boost puzzles

Yesterday's solutions

SAMURAI

5	7	3	6	9	2	1	4	8				2	9	1	8	4	6	3	5	7
1	4	6	8	5	3	9	2	7				7	6	4	2	5	3	8	9	1
9	2	8	4	7	1	3	6	5				8	5	3	1	9	7	6	2	4
7	5	1	3	2	4	8	9	6				3	8	2	7	1	4	5	6	9
6	9	4	7	1	8	2	5	3				9	4	6	5	8	2	7	1	3
3	8	2	5	6	9	7	1	4				5	1	7	6	3	9	2	4	8
2	3	7	9	4	6	5	8	1	7	4	3	6	2	9	4	7	8	1	3	5
4	1	5	2	8	7	6	3	9	8	1	2	4	7	5	3	2	1	9	8	6
8	6	9	1	3	5	4	7	2	5	9	6	1	3	8	9	6	5	4	7	2
						9	4	7	6	2	5	8	1	3						
						1	5	3	9	8	4	7	6	2						
						8	2	6	3	7	1	9	5	4						
2	5	7	6	1	4	3	9	8	1	5	7	2	4	6	5	8	3	1	9	7
3	1	8	5	2	9	7	6	4	2	3	9	5	8	1	9	7	4	3	6	2
6	4	9	3	8	7	2	1	5	4	6	8	3	9	7	6	1	2	5	8	4
8	7	6	2	3	1	4	5	9				8	6	4	3	2	7	9	5	1
1	3	5	9	4	6	8	7	2				1	5	2	8	9	6	4	7	3
4	9	2	7	5	8	6	3	1				9	7	3	1	4	5	8	2	6
7	8	1	4	9	3	5	2	6				7	1	8	2	3	9	6	4	5
5	6	4	1	7	2	9	8	3				4	3	5	7	6	8	2	1	9
9	2	3	8	6	5	1	4	7				6	2	9	4	5	1	7	3	8

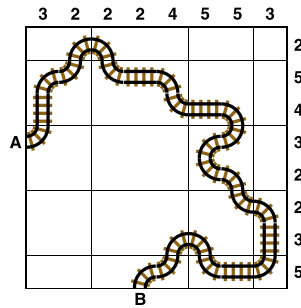
SUKO

5		9		2
	21		24	
1		6		7
	18		25	
3		8		4

MINI SUDOKU

3	6	1	2	4	5
4	5	2	6	3	1
1	3	6	5	2	4
2	4	5	1	6	3
5	2	4	3	1	6
6	1	3	4	5	2

TRAIN TRACKS



FUTOSHIKI

4	>	3	2	>	1	5
			^			
1	5	3	4	>	2	
			^			
3	4	<	5	2	1	
			^		^	
5	2	1	3	4		
				^		
2	1	4	5	3		

SUDOKU

2	6	3	9	1	5	4	8	7
1	9	7	4	8	6	3	5	2
5	8	4	7	3	2	1	6	9
3	4	5	6	7	9	8	2	1
9	2	8	3	4	1	6	7	5
7	1	6	2	5	8	9	4	3
6	7	1	5	9	4	2	3	8
4	3	9	8	2	7	5	1	6
8	5	2	1	6	3	7	9	4

KILLER

6	2	9	3	1	4	7	5	8
4	3	5	7	8	6	1	9	2
8	1	7	5	9	2	4	6	3
2	8	3	6	4	1	9	7	5
9	7	4	8	5	3	6	2	1
5	6	1	9	2	7	3	8	4
1	5	6	2	3	9	8	4	7
3	9	8	4	7	5	2	1	6
7	4	2	1	6	8	5	3	9

CODEWORD

P	A	R	A	G	R	A	P	H	R	W
M	D	E	A	H	E	R	O			
C	O	N	J	U	R	E	D	F	R	
U	U	O	D	E	B	U	N	K		
U	N	I	T	U	Y	S	I			
T	A	L	T	O	O	C	E	A	N	
O	N	E	T	W	R					
D	I	T	T	T	A	X	I	Z		
Y	I	M	S	T	O	O	L			
S	A	L	A	M	I	T	I	D		
S	T									
E	V	E	R	R	A	N	Q	U	I	L
Y	D									