



ARBOREA

ACKNOWLEDGEMENTS

To all my friends who journeyed through this new world by my side.

FOREWORD

In a world of giant trees, humans built their villages up in the branches. In order to survive amongst the gigantic monsters that freely roam this world, the “tree villages” allied themselves with smaller creatures and created an interdependent lifestyle.

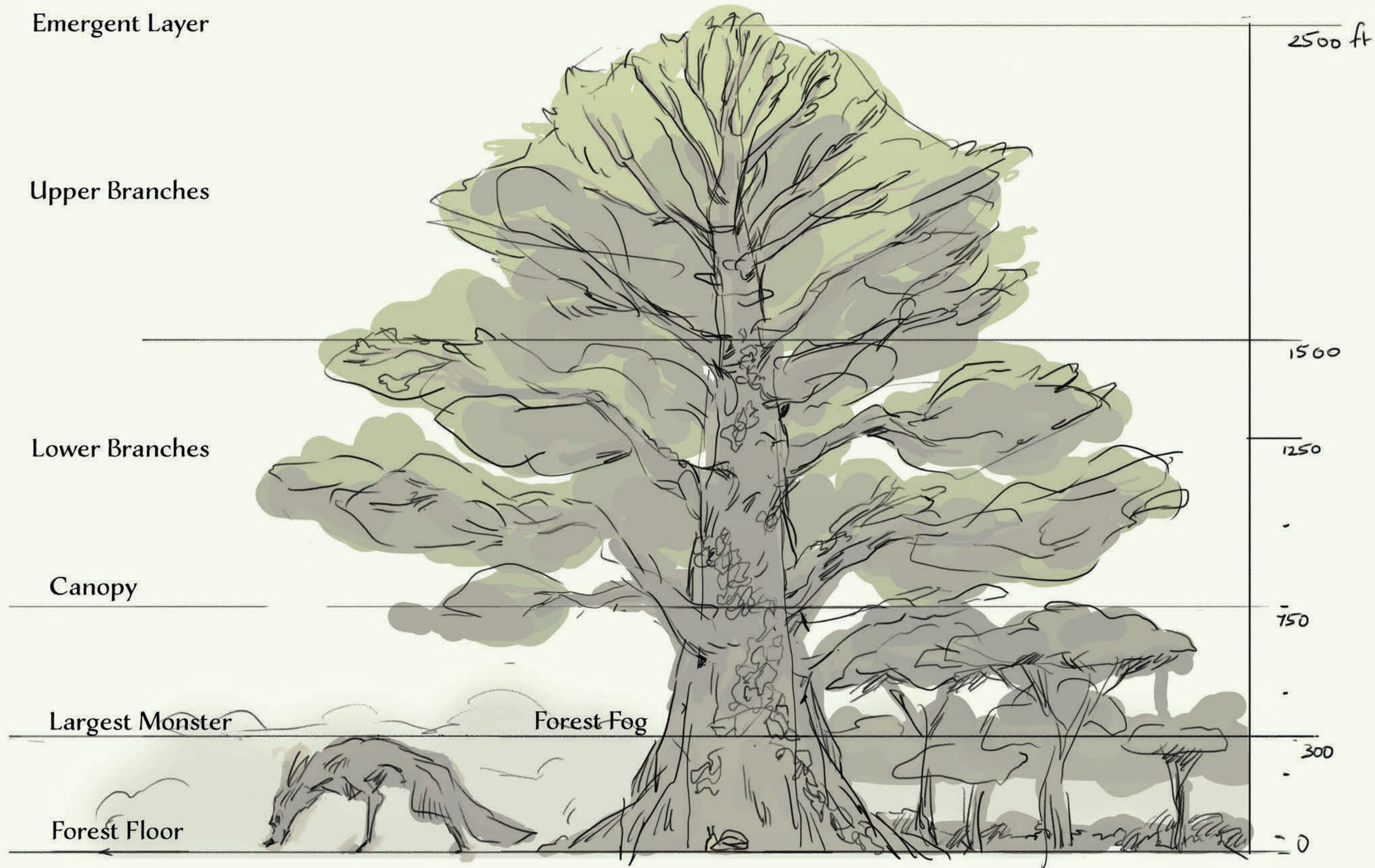
The influence of a creature that a particular village is allied with is often reflected in the culture, fashion, food, defense, occupation, and architecture of the village.

A team of artists came together to research the world of Arborea and compiled their findings into the very book you are reading now.

Welcome to Arborea.



BRADLEY WILLIAMS



FOREST SCALE CHART





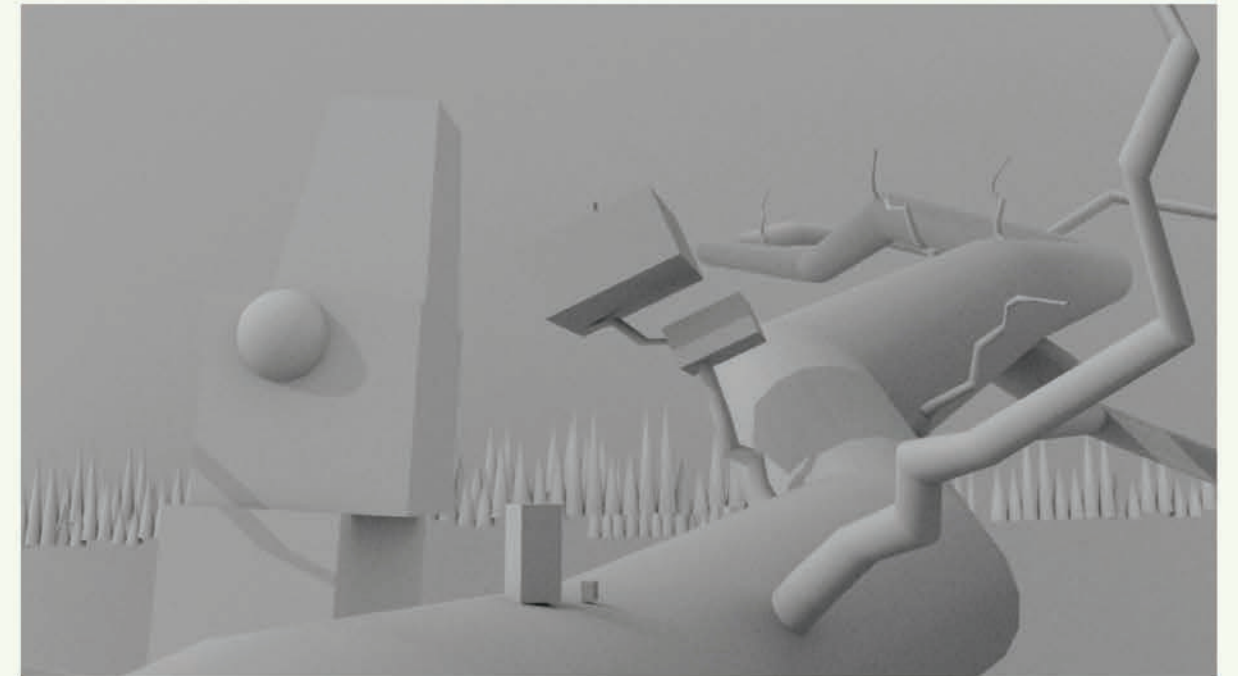
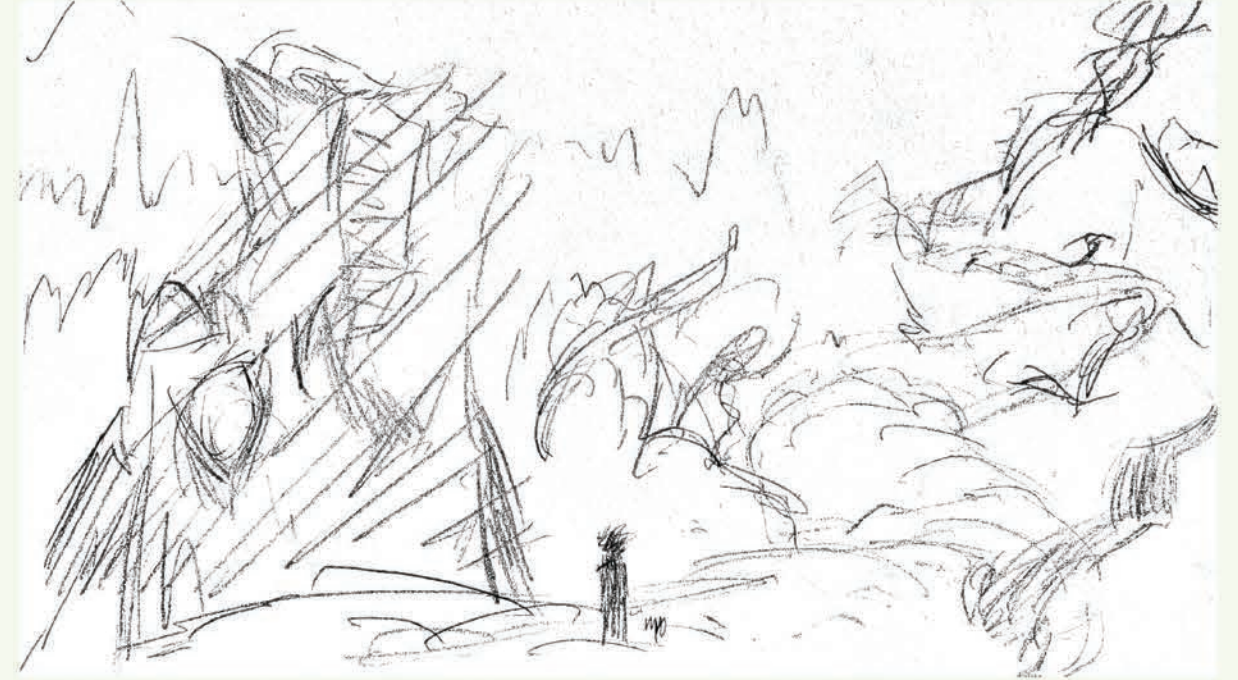
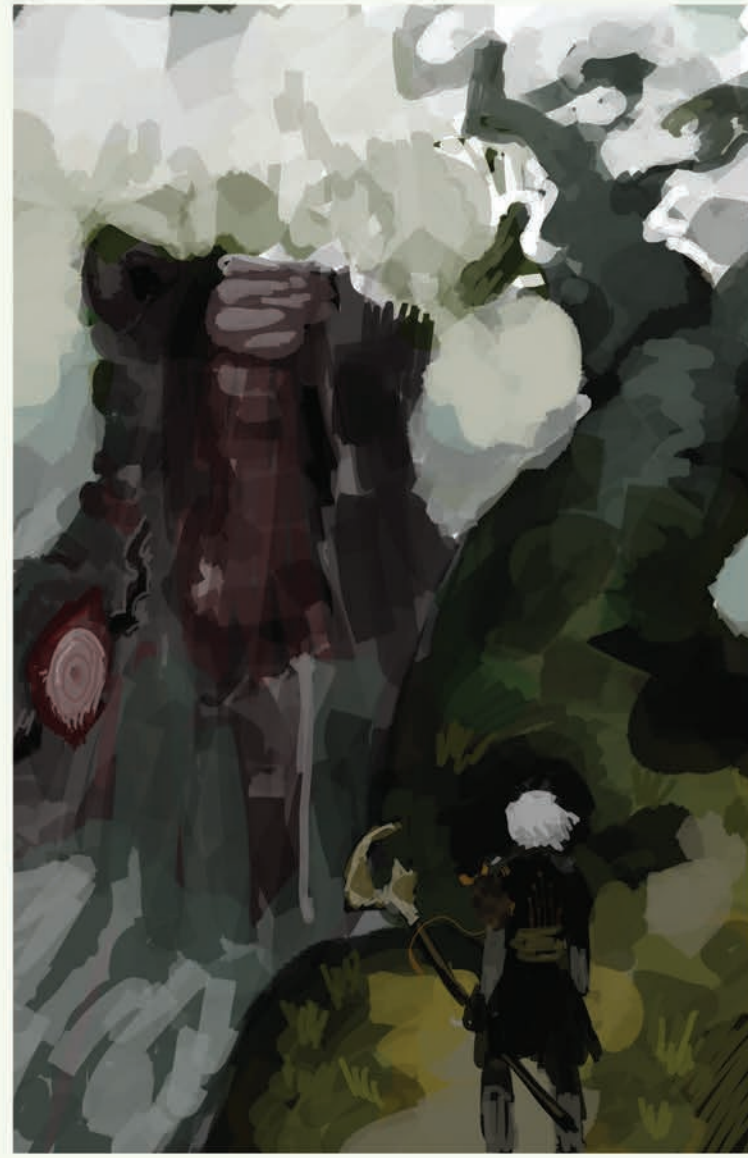
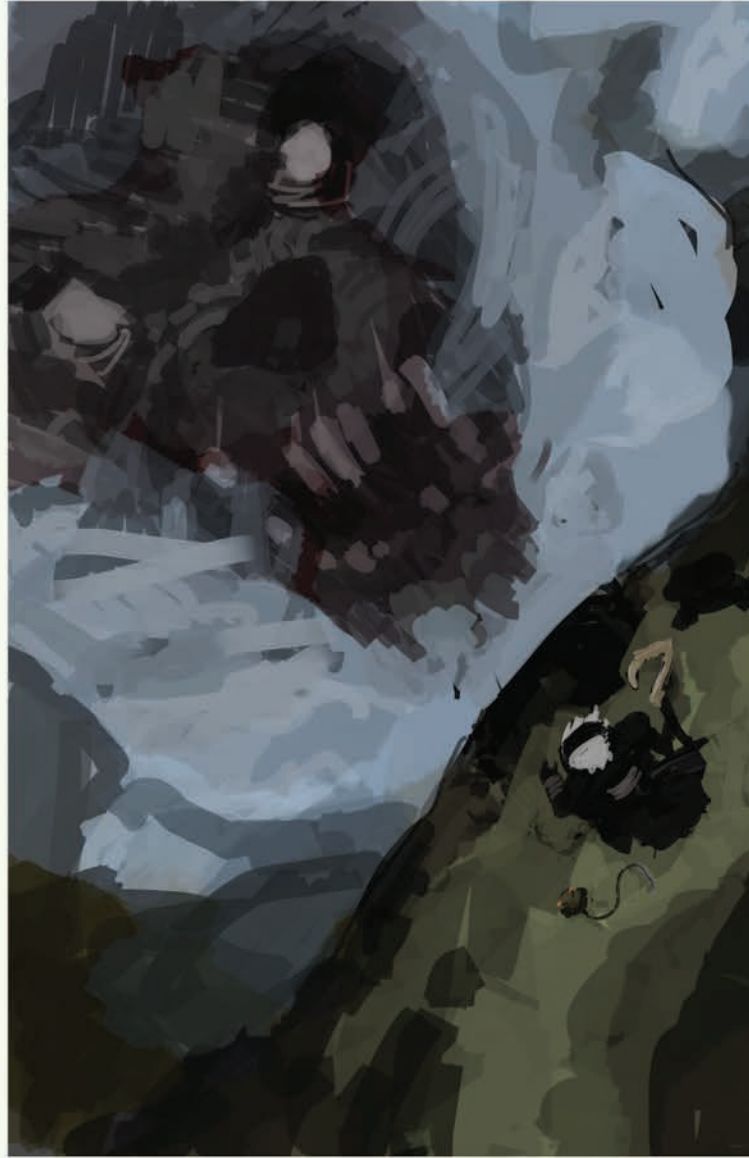


ILLUSTRATION IDEATION PROCESS

For this painting, I wanted to capture what it would feel like for a Tarsier Ninja to walk down one of the branches of the Tree Village. The massive head of a giant dog poking through the fog would serve as a grim reminder of the dangers that existed below. I quickly painted two sketches of what this scene looked like in my head.

Once I decided on a sketch I liked, I used simple shapes in Maya to quickly recreate the scene. This helped me easily envision the scale of the objects in the scene and compose them in a visually appealing way.





SPIDER
ARCHITECT



BIRD TRADERS



FLYING SQUIRREL
MERCHANT

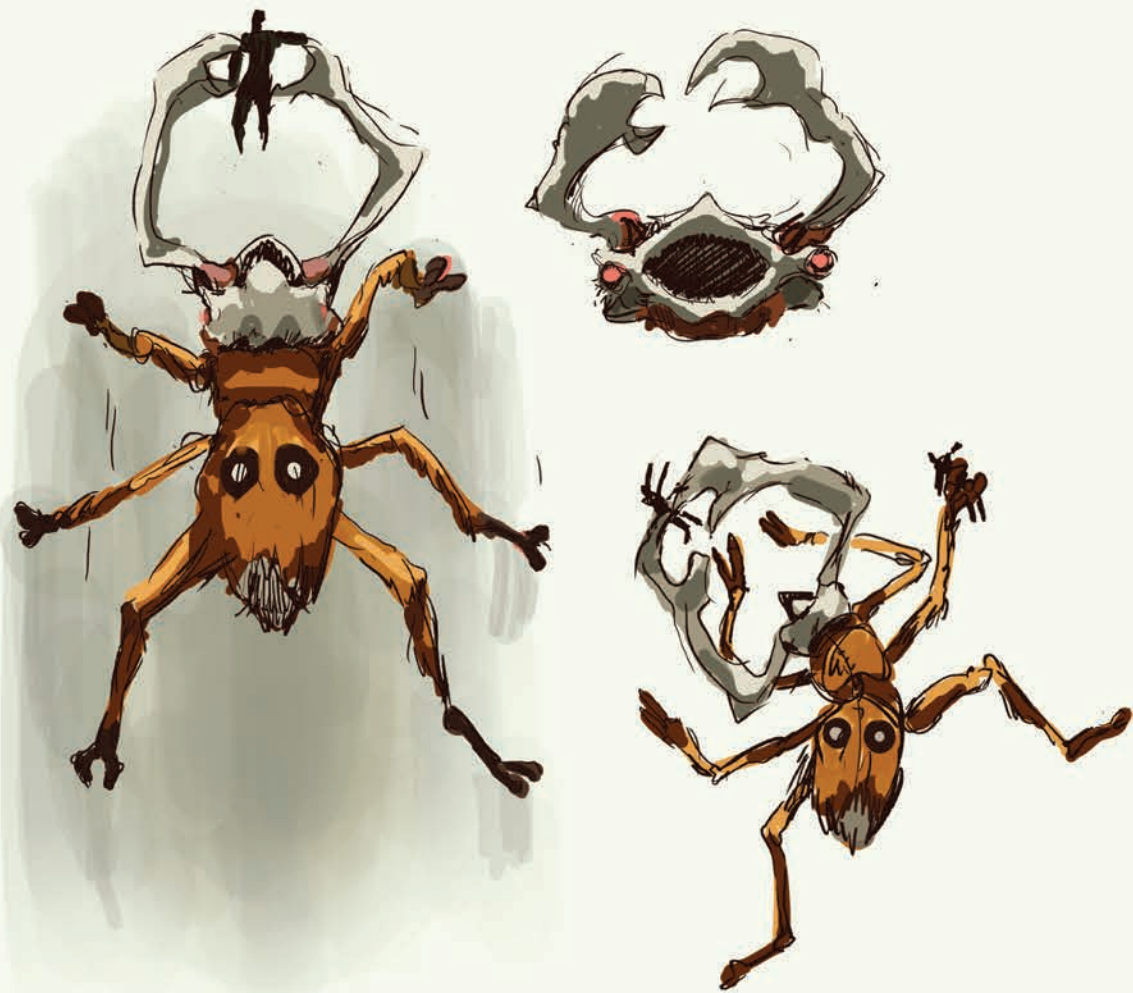


TIGER WARRIOR



TARSIER NINJA





ORANGE CLAW OF DEATH

Generally found on the trunk of the Emergent Trees, these 6 legged monsters grab prey with their bony antlers. Once the victim is no longer moving, the Orange Claw lets its victim fall directly into its maw.

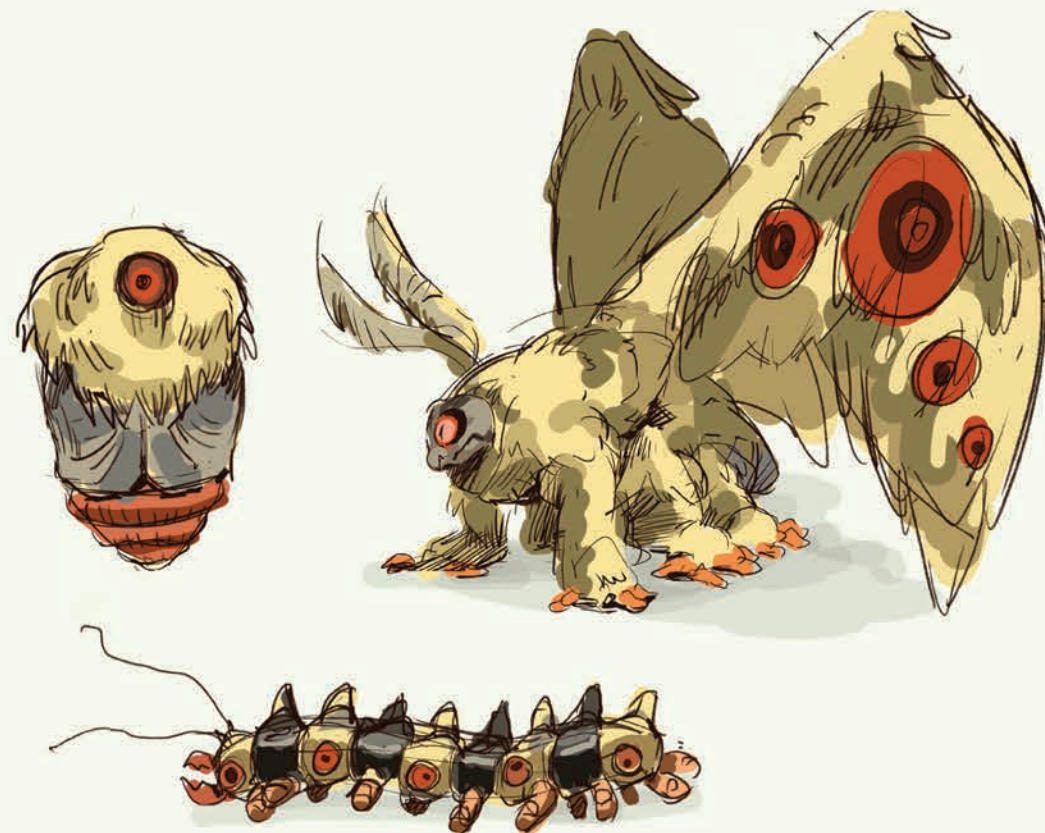
ELEPHANTAL

This mammoth-like monster dwells on the forest floor. Its hard exposed skull serves as both an excellent defense as well as offence.

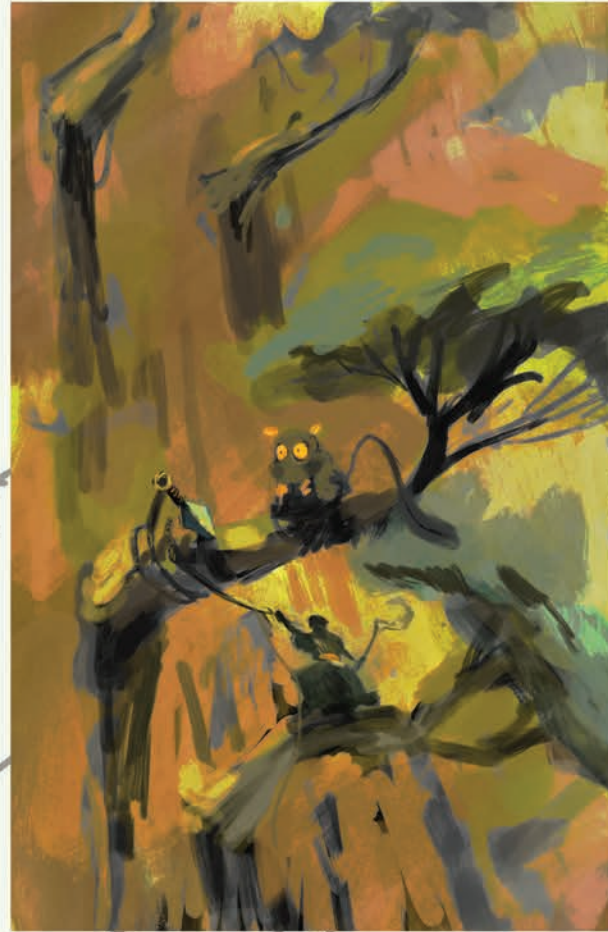
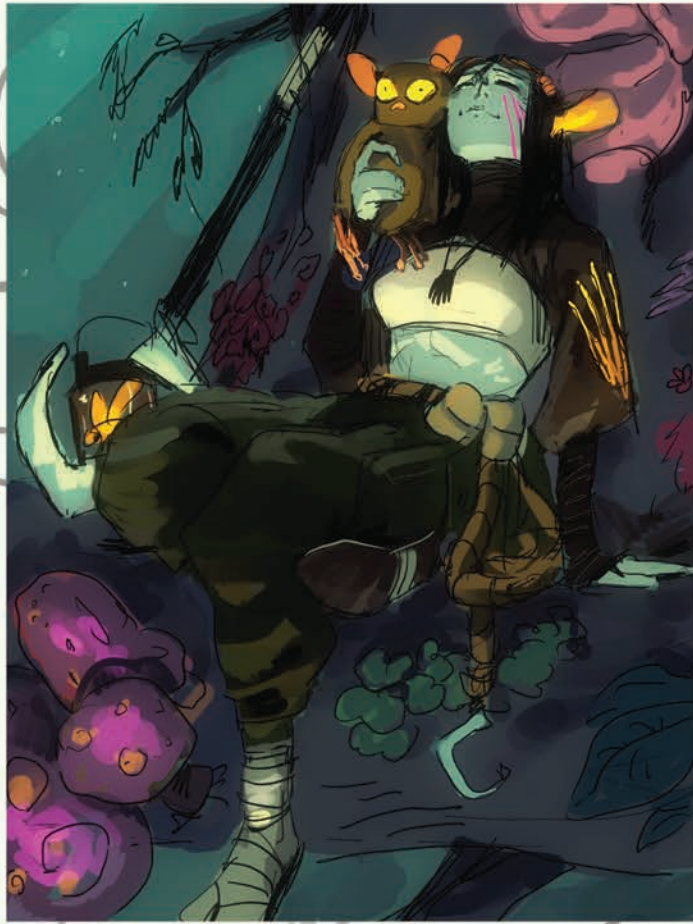


WHITE BEHEMOTH

As a Larva, the White Behemoth has deadly fangs which could prove fatal if one gets too close to the wrong end. In the Pupa stage, a strong bony covering protects its vitals. Eventually, the winged moth emerges, protected by bone and covered in beautiful white feathers.



EARLY TARSIER NINJA CONCEPT



In the early stages of visual development, I wanted the Tarsier People to resemble the traditional Japanese ninja. This is because of the unique assassin-like hunting style of the Tarsier.

Bioluminescence helps the Tarsier People hunt at night alongside their nocturnal counterparts. The Ninja are equipped with a staff that represents the long tarsal bones of the Tarsier, and rope to help them scale trees. Later designs implemented clothing aesthetics from Balinese culture, as Tarsiers are native to Indonesia.





TARSIER PRINCE

The royal prince, burdened with the responsibility of finding a new home for the growing Tarsier Tree population.



TARSIER RESEARCHER

A quirky teenager obsessed with bioluminescence and color. Her research helps the village find alternatives to fire as a light source.



TARSIER KSHATRIYA

This experienced warrior wears the scapula of the Giant Monitor lizard he once slew. Traditional and disciplined but slightly unstable.



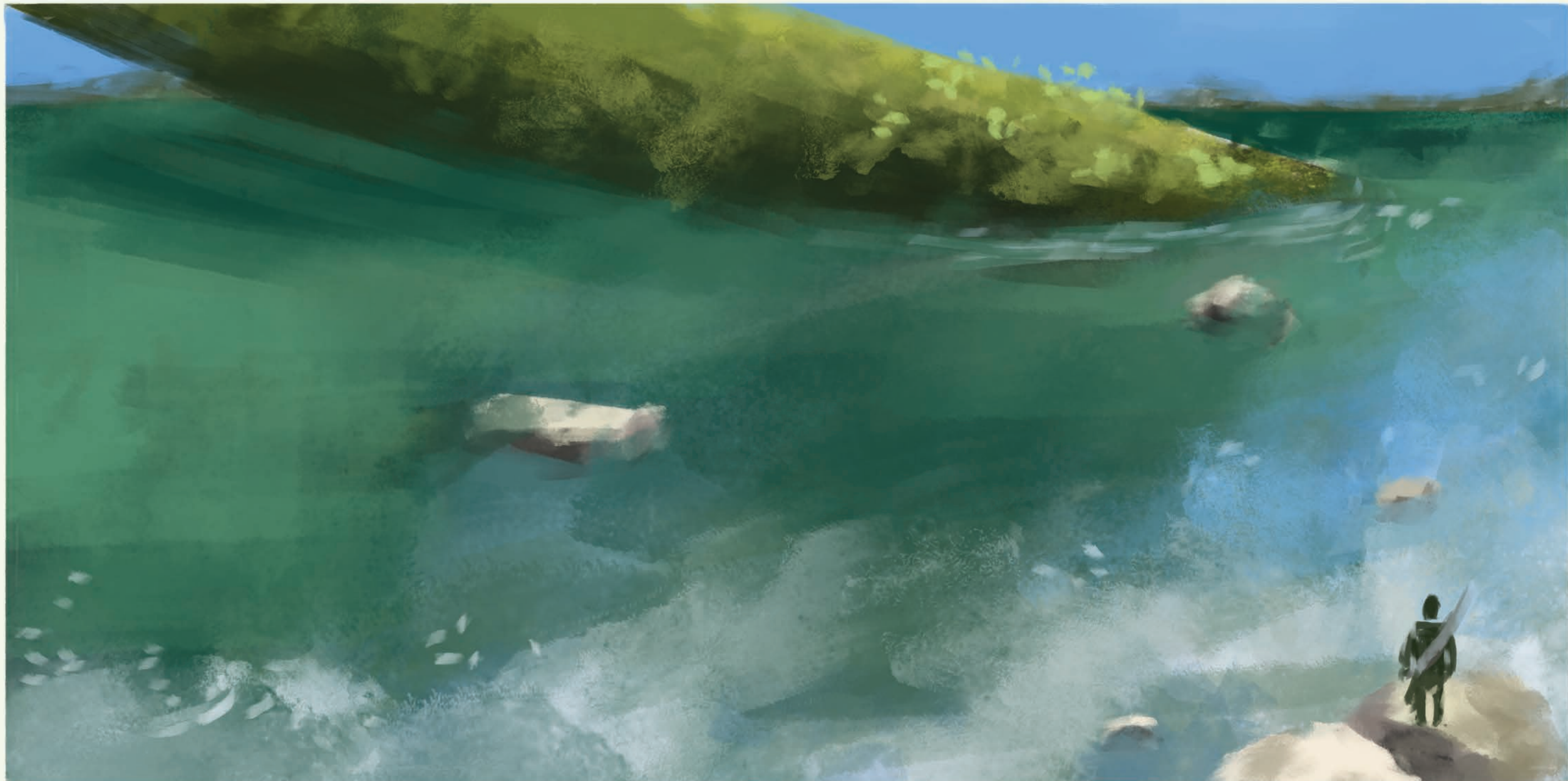
TARSIER NINJA

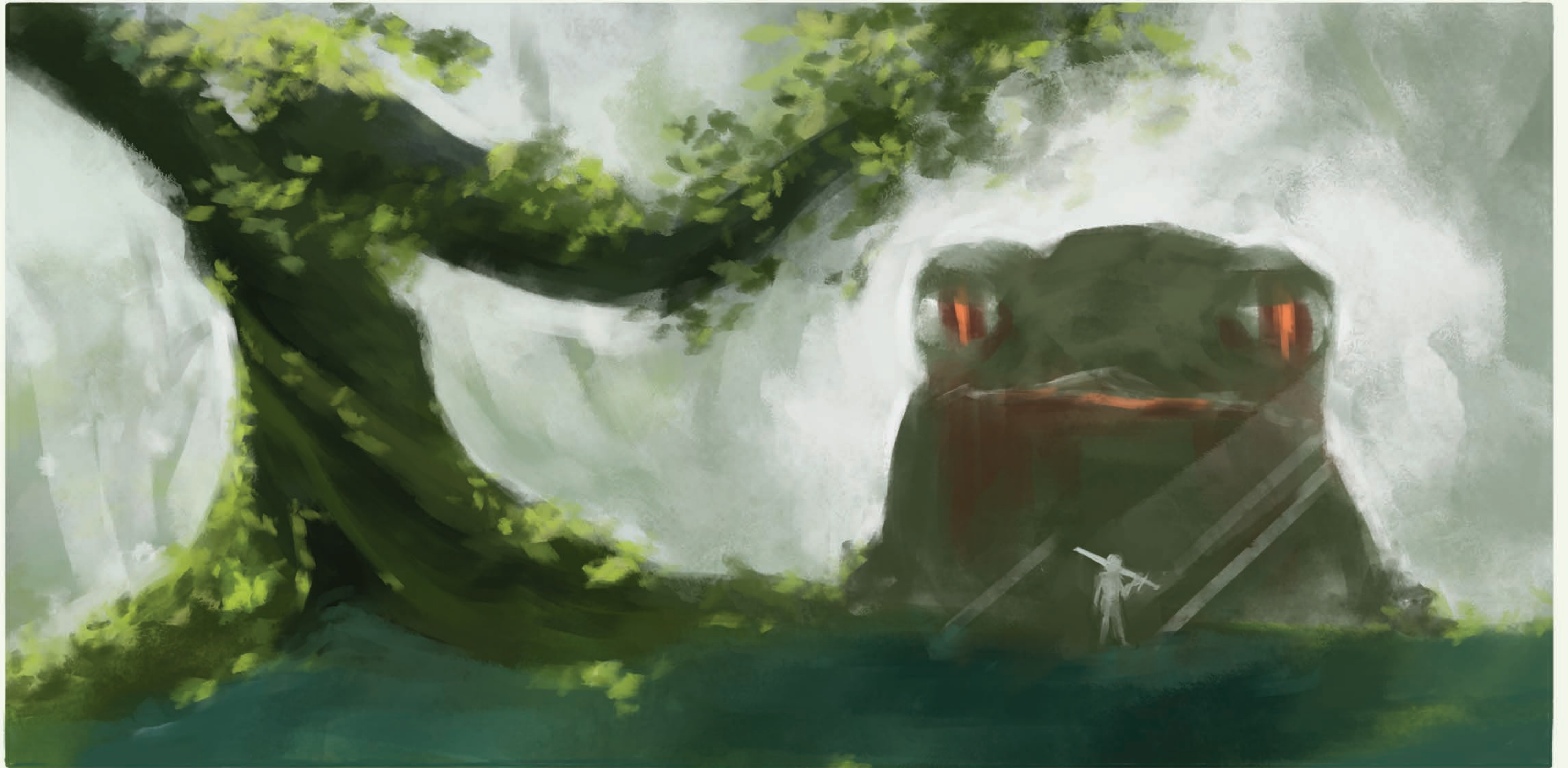
Untrustworthy and dangerous, she is an inhabitant of one of the lower branches of the Tree. Unlike the Kshatriya, her combat style resembles that of an assassin.



HANNAH GREGORIC

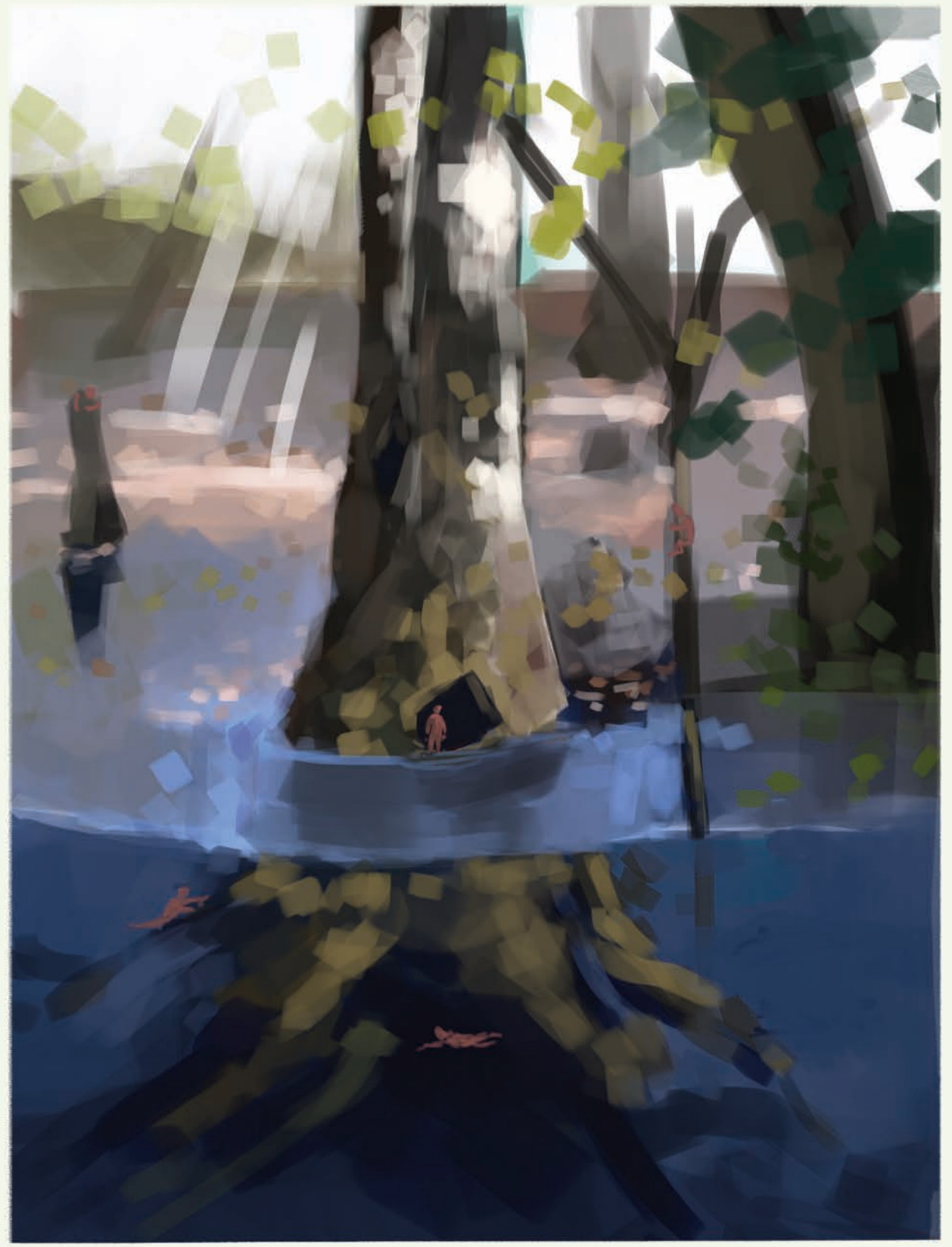












MAKAYLA INYAVONG

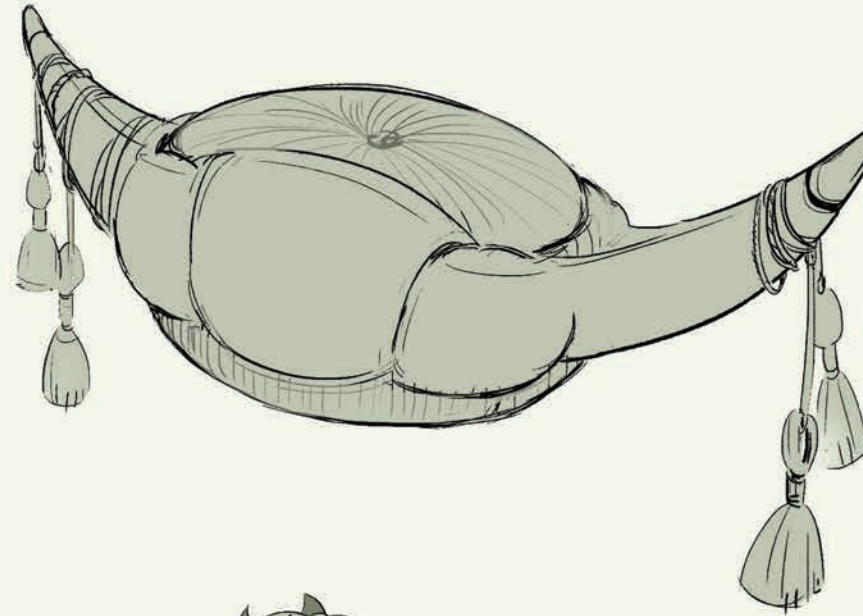
THE BEETLE VILLAGE

Located on a giant tree, this village is nestled on tiers of flat mushrooms that grow along the tree. The villagers have formed a decades long partnership with the giant beetles that live on this area of the tree with them.

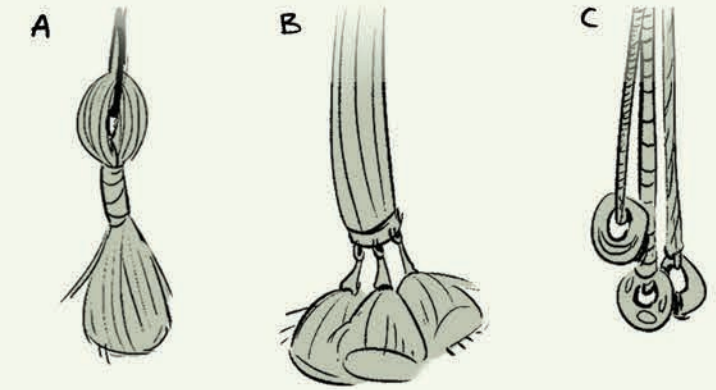


THE VILLAGERS

This hat's flat top provides a surface to put items on while it's horns can be personalized depending on what hang from them.

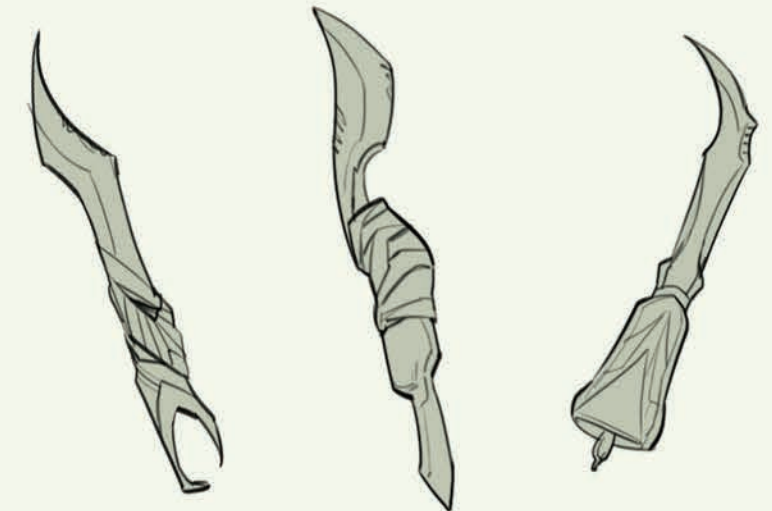


Tassel Variety



In an effort to distance themselves from giant predators in the forest below, the founders of the village established their home closer to the top of their tree.

Because of this, villagers typically wear multiple layers of clothing and hats to protect from the cold.



Utility Knives



BETLES OF THE VILLAGE

Being able to lift up more than 8x it's body weight, carrying villagers around is a simple task for this male beetle. In addition to providing transportation, these beetles also aid villagers in defending against larger predators and surveying the perimeter.



MATTHEW LAU

ARBOREA

The last hope for humanity is to protect their home - the only tree left on Earth.



SEQUOIA

BONSAI

BAOBAB

WISTERIA

QUEEN PALM

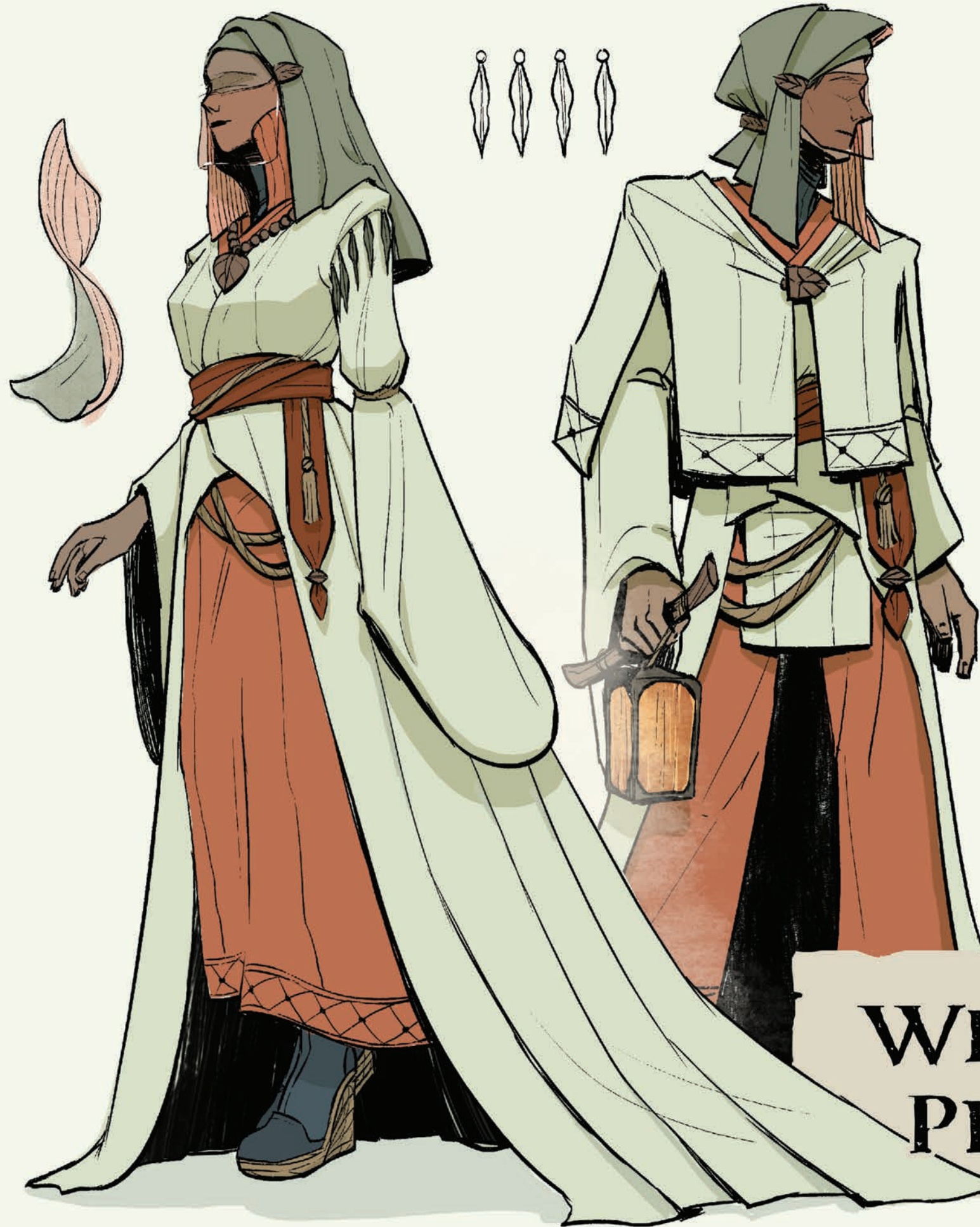


LAUREN LEE

THE WILLOW

To the inhabitants of this tree, there is nothing more sacred than the Willow herself. All life is centered around the spirit of the willow and what the tree can provide for its people.





WILLOW PRIESTS

The priests and priestesses of the Willow serve and protect the heart of the tree.

They worship the Willow spirit, who provides life and sustenance for her people.



PEOPLE OF THE WILLOW

The Willow provides a place for multicultural trade and a politically neutral zone. While the people of this tree enjoy the luxuries of imported goods, they have thriving industries in fishing, monster-fishing, and textiles.

The people of the Willow are best known for their fresh fish, woven goods, dyed cloth, and the various medicinal products sourced from the willow tree.

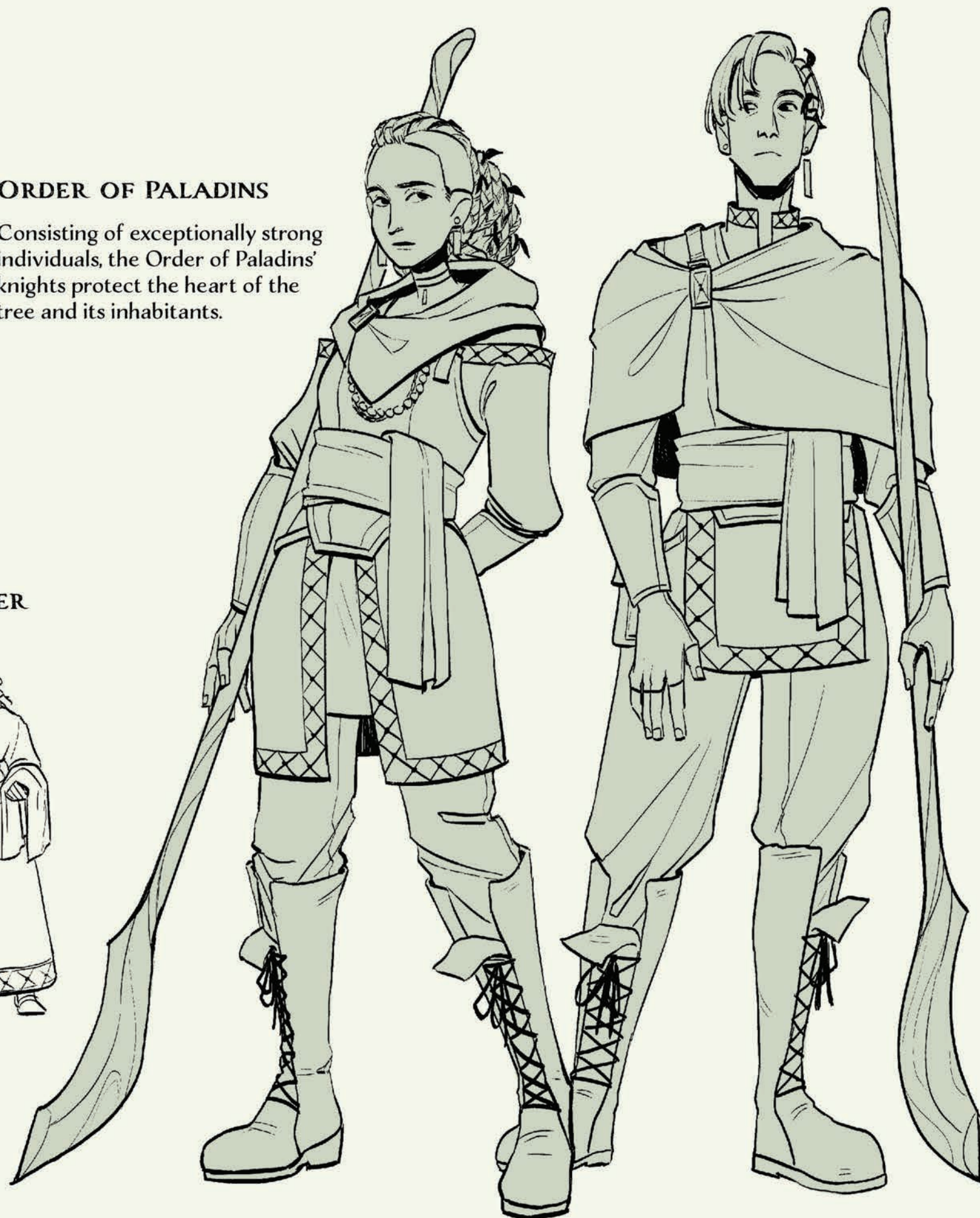
ORDER OF PALADINS

Consisting of exceptionally strong individuals, the Order of Paladins' knights protect the heart of the tree and its inhabitants.

WEAVER

THE APOTHECARY

A man of medicine.



SHAY HEATH



AEDON VILLAGES

Aedon villages consist mostly of individual houses hung from tree branches. These houses may be connected by various constructions of bridges, or many houses may attach to one larger, central hub. Aedon society is largely mercantile, aided by the ease of travel granted by their four legged bird steeds.



PICO VILLAGES

The predecessors to the Pico people lived in nests bored by a species of giant woodpecker. Over time, they created tools and formed the skills to carve into tree trunks with their own designs. These villages contain numerous internal tunnels and passageways, connecting rooms which from the outside might seem entirely separate. While adult woodpeckers often live in other trees or nest in higher patches of tree trunk, most Pico villages contain hatcheries where eggs and young birds are kept

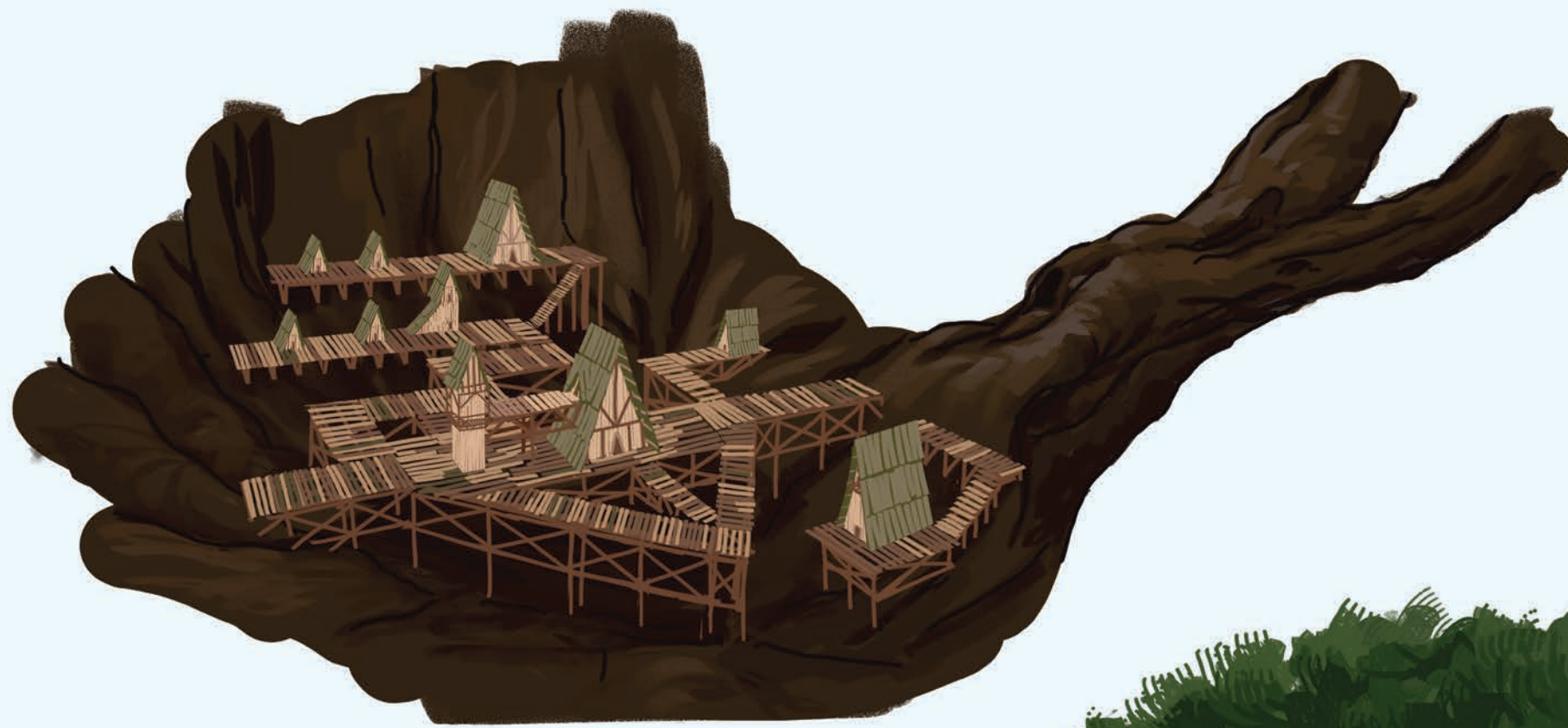




VELA VILLAGES

The Vela people took inspiration from the weaver birds, learning the skills of weaving plant fibers into various shapes and materials. In addition to constructing their houses in this manner, they also produce textiles and other woven products, such as baskets and packs, which make for valuable trade items.

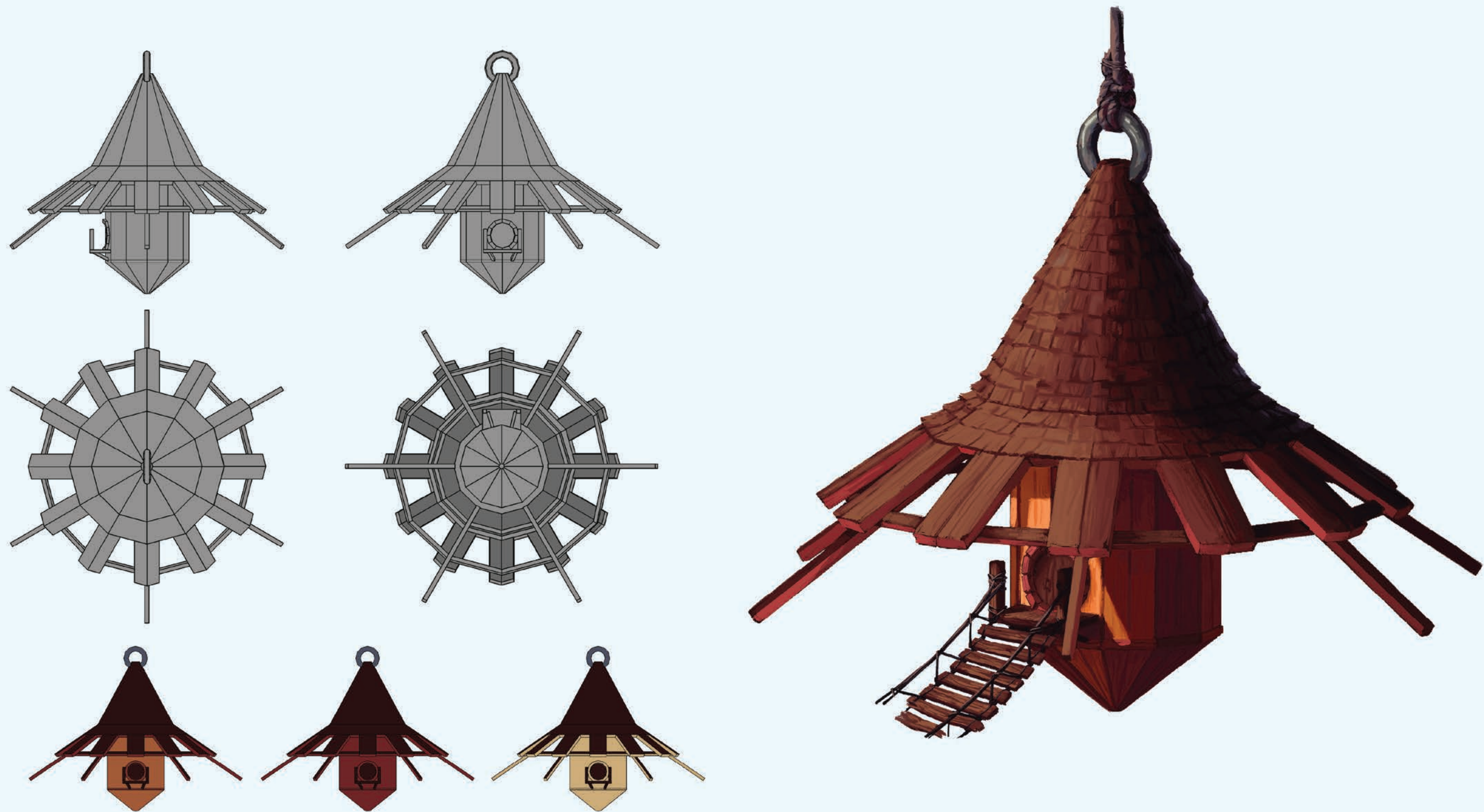




SCIURI VILLAGES

Sciuri people have taken after the giant squirrels living in the crooks and hollows of old, gnarled trees. Primarily gatherers, they stockpile what they find in storage under the stilt foundations of their buildings and walkways. Each village has a different layout, built to accommodate the peculiarities of the tree in which it is built.





AEDON HOUSES

Aedon houses are constructed of wood, with a strong internal structure to secure the metal ring attaching it to the tree branch above.



A rain barrel situated outside the top floor of the house provides running water. Inside, a clay oven and stovetop is used for cooking. These ovens are quite difficult to come by, given the scarcity of metal and clay in the forest canopy.



An Aedon scout flies their bird over the treetops.

SHAY HEATH

ARBOREA 