



A compilation of global bio-optical in situ data for ocean-colour satellite applications – version two

André Valente¹, Shubha Sathyendranath², Vanda Brotas^{1,2}, Steve Groom², Michael Grant^{2,3}, Malcolm Taberner³, David Antoine^{4,5}, Robert Arnone⁶, William M. Balch⁷, Kathryn Barker^{8,9,10}, Ray Barlow¹¹, Simon Bélanger¹², Jean-François Berthon¹³, Şükrü Beşiktepe¹⁴, Yngve Borsheim¹⁵, Astrid Bracher^{16,17}, Vittorio Brando^{9,18}, Elisabetta Canuti¹³, Francisco Chavez¹⁹, Andrés Cianca²⁰, Hervé Claustre⁴, Lesley Clementson⁹, Richard Crout²¹, Robert Frouin²², Carlos García-Soto^{23,24}, Stuart W. Gibb²⁵, Richard Gould²¹, Stanford B. Hooker²⁶, Mati Kahru²², Milton Kampel²⁷, Holger Klein²⁸, Susanne Kratzer²⁹, Raphael Kudela³⁰, Jesus Ledesma³¹, Hubert Loisel³², Patricia Matrai⁷, David McKee³³, Brian G. Mitchell²², Tiffany Moisan^{34,†}, Frank Muller-Karger³⁵, Leonie O’Dowd³⁶, Michael Ondrusek³⁷, Trevor Platt², Alex J. Poulton³⁸, Michel Repecaud³⁹, Thomas Schroeder⁹, Timothy Smyth², Denise Smythe-Wright⁴⁰, Heidi M. Sosik⁴¹, Michael Twardowski⁴², Vincenzo Vellucci⁴, Kenneth Voss⁴³, Jeremy Werdell²⁶, Marcel Wernand^{44,†}, Simon Wright⁴⁵, and Giuseppe Zibordi¹³

¹MARE – Marine and Environmental Sciences Centre, Faculdade de Ciências, Universidade de Lisboa, Campo Grande, 1749-016 Lisbon, Portugal

²Plymouth Marine Laboratory, Plymouth, PL1 3DH, UK

³EUMETSAT, Eumetsat-Allee 1, 64295 Darmstadt, Germany

⁴Sorbonne Université, CNRS, Laboratoire d’Océanographie de Villefranche, LOV, 06230 Villefranche-sur-Mer, France

⁵Remote Sensing and Satellite Research Group, School of Earth and Planetary Sciences, Curtin University, Perth, WA 6845, Australia

⁶University of Southern Mississippi, Stennis Space Center, MS, USA

⁷Bigelow Laboratory for Ocean Sciences, 60 Bigelow Dr., East Boothbay, ME 04544, USA

⁸ARGANS Ltd, Plymouth, UK

⁹CSIRO Oceans and Atmosphere, Perth, Western Australia, Australia

¹⁰Australian Research Data Commons, Caulfield East, Australia

¹¹Bayworld Centre for Research and Education, Cape Town, South Africa

¹²Université du Québec à Rimouski, Rimouski, Quebec, Canada

¹³European Commission, Joint Research Centre, Ispra, Italy

¹⁴Dokuz Eylul University, Institute of Marine Science and Technology, Izmir, Turkey

¹⁵Institute of Marine Research, Bergen, Norway

¹⁶Alfred Wegener Institute Helmholtz Centre for Polar and Marine Research, Bremerhaven, Germany

¹⁷Institute of Environmental Physics, University Bremen, Bremen, Germany

¹⁸CNR – ISMAR, Rome, Italy

¹⁹Monterey Bay Aquarium Research Institute, Moss Landing, CA, USA

²⁰PLOCAN – Oceanic Platform of the Canary Islands, Carretera de Taliarte, 35214 Telde, Gran Canaria, Spain

²¹Naval Research Laboratory, Stennis Space Center, MS, USA

²²Scripps Institution of Oceanography, University of California San Diego, CA, USA

²³Spanish Institute of Oceanography (IEO), Corazón de María 8, 28002 Madrid, Spain

²⁴Plentziako Itsas Estazioa/Euskal Herriko Unibertsitatea (PIE/EHU), Areatza z/g, 48620 Plentzia, Spain

²⁵Environmental Research Institute, North Highland College,

University of the Highlands and Islands, Thurso, Scotland, UK

²⁶NASA Goddard Space Flight Center, Greenbelt, MD, USA

- ²⁷Remote Sensing Division, National Space Research Institute (INPE), Sao Jose dos Campos, Brazil
- ²⁸Operational Oceanography Group, Federal Maritime and Hydrographic Agency, Hamburg, Germany
- ²⁹Department of Ecology, Environment and Plant Sciences, Stockholm University, 106 91 Stockholm, Sweden
- ³⁰University of California Santa Cruz, Santa Cruz, CA, USA
- ³¹Instituto del Mar del Perú, Callao, Peru
- ³²Laboratoire d’Océanologie et de Géosciences, Université du Littoral-Côte-d’Opale, Université Lille, CNRS, UMR 8187, LOG, 32 avenue Foch, Wimereux, France
- ³³Physics Department, University of Strathclyde, Glasgow, G4 0NG, Scotland, UK
- ³⁴NASA Goddard Space Flight Center, Wallops Flight Facility, Wallops Island, VA, USA
- ³⁵Institute for Marine Remote Sensing/ImaRS, College of Marine Science, University of South Florida, St Petersburg, FL, USA
- ³⁶Fisheries and Ecosystem Advisory Services, Marine Institute, Rinnville – Oranmore, Galway, Ireland
- ³⁷NOAA/NESDIS/STAR/SOCD, College Park, MD, USA
- ³⁸Lyell Centre for Earth and Marine Science and Technology, Heriot-Watt University, Edinburgh, UK
- ³⁹IFREMER Centre de Brest, Plouzane, France
- ⁴⁰Ocean Biogeochemistry and Ecosystems, National Oceanography Centre, Waterfront Campus, Southampton, UK
- ⁴¹Biology Department, Woods Hole Oceanographic Institution, Woods Hole, MA, USA
- ⁴²Harbor Branch Oceanographic Institute, Fort Pierce, FL, USA
- ⁴³University of Miami, Coral Gables, FL, USA
- ⁴⁴Royal Netherlands Institute for Sea Research, Texel, the Netherlands
- ⁴⁵Australian Antarctic Division and the Antarctic Climate and Ecosystems Cooperative Research Centre, Hobart, Australia
- †deceased

Correspondence: André Valente (adovalente@fc.ul.pt)

Received: 8 February 2019 – Discussion started: 18 February 2019

Revised: 24 June 2019 – Accepted: 25 June 2019 – Published: 15 July 2019

Abstract. A global compilation of in situ data is useful to evaluate the quality of ocean-colour satellite data records. Here we describe the data compiled for the validation of the ocean-colour products from the ESA Ocean Colour Climate Change Initiative (OC-CCI). The data were acquired from several sources (including, inter alia, MOBY, BOUSSOLE, AERONET-OC, SeaBASS, NOMAD, MERMAID, AMT, ICES, HOT and GeP&CO) and span the period from 1997 to 2018. Observations of the following variables were compiled: spectral remote-sensing reflectances, concentrations of chlorophyll *a*, spectral inherent optical properties, spectral diffuse attenuation coefficients and total suspended matter. The data were from multi-project archives acquired via open internet services or from individual projects, acquired directly from data providers. Methodologies were implemented for homogenization, quality control and merging of all data. No changes were made to the original data, other than averaging of observations that were close in time and space, elimination of some points after quality control and conversion to a standard format. The final result is a merged table designed for validation of satellite-derived ocean-colour products and available in text format. Metadata of each in situ measurement (original source, cruise or experiment, principal investigator) was propagated throughout the work and made available in the final table. By making the metadata available, provenance is better documented, and it is also possible to analyse each set of data separately. This paper also describes the changes that were made to the compilation in relation to the previous version (Valente et al., 2016). The compiled data are available at <https://doi.org/10.1594/PANGAEA.898188> (Valente et al., 2019).

1 Introduction

Currently, there are several sets of in situ bio-optical data, worldwide, suitable for validation of ocean-colour satellite data. Whereas some are managed by the data producers, others are in international repositories with contributions from multiple scientists. Many have rigid quality controls and are built specifically for ocean-colour validation. The use of only any one of these datasets would limit the number of data in validation exercises. It is, therefore, vital to acquire and merge all these datasets into a single unified dataset to maximize the number of matchups available for validation, their distribution in time and space, and, consequently, to reduce uncertainties in the validation exercise. However, merging several datasets together can be a complicated task. First it is necessary to acquire and harmonize all datasets into a single standard format. Second, during the merging, duplicates between datasets have to be identified and removed. Third, the metadata should be propagated throughout the process and made available in the final merged product. Ideally, the compiled dataset would be made available as a simple text table, to facilitate ease of access and manipulation. In this work such unification of multiple datasets is presented. This was done for the validation of the ocean-colour products from the ESA Ocean Colour Climate Change Initiative (OC-CCI), but with the intent to serve the broader user community as well.

A merged dataset is not without drawbacks: it is likely to be large and so not always easy to manipulate; because the merging is done on pre-existing, processed databases, it is not possible to have full control of the whole processing chain; the dataset would be a compilation of observations collected by several investigators using different instruments, sampling methods and protocols, which might eventually have been modified by the processing routines used by the repositories or archives. To minimize these potential drawbacks, we have, for the most part, incorporated only datasets that have emerged from the long-term efforts of the ocean-colour and biological oceanographical communities to provide scientists with high-quality in situ data, and we implemented additional quality checks on the data to enhance confidence in the quality of the merged product. Nevertheless, it is still recognized that different and unpredictable uncertainties may affect data from the diverse sources as a result of the application of a variety of field/laboratory instruments, methods and data reduction schemes.

In Sect. 2 the methodologies used to harmonize and integrate all data, as well as a description of individual datasets acquired, are provided. In Sect. 3 the geographic distribution and other characteristics of the final merged dataset are shown. Section 4 provides an overview of the data.

2 Data and methods

2.1 Preprocessing and merging

The compiled global set of bio-optical in situ data described in this work has an emphasis, though not exclusive, on open-ocean data. It comprises the following variables: remote-sensing reflectance (rrs), chlorophyll *a* concentration (chl_a), algal pigment absorption coefficient (aph), detrital and coloured dissolved organic matter absorption coefficient (adg), particle backscattering coefficient (bbp), diffuse attenuation coefficient for downward irradiance (kd) and total suspended matter (tsm). The variables rrs, aph, adg, bbp and kd are spectrally dependent, and this dependence is, hereafter, implied. The data were compiled from 27 sources (MOBY, BOUSSOLE, AERONET-OC, SeaBASS, NOMAD, MERMAID, AMT, ICES, HOT, GeP&CO, AWI, ARCSSPP, BARENTSSEA, BATS, BIOCHEM, BODC, CALCOFI, CCELTER, CIMT, COASTCOLOUR, ESTOC, IMOS, MAREDAT, PALMER, SEADATANET, TPSS and TARA): each one described in Sect. 2.2. The data sources in this work should also be viewed as groups of data that were acquired from a specific source, standardized with a specific method and later merged into the compilation. The compiled in situ observations have a global distribution and cover the period 1997 to 2018. The listed variables, with the exception of total suspended matter, were chosen as they are the operational satellite ocean-colour products of the ESA OC-CCI project, which currently focuses on the merging of four ocean-colour satellite sensors: the Medium Resolution Imaging Spectrometer (MERIS) of ESA, the Moderate Resolution Imaging Spectroradiometer (MODIS) of NASA, the Sea-viewing Wide Field-of-view Sensor (SeaWiFS) of NASA, and the Visible Infrared Imaging Radiometer Suite (VIIRS) of NASA and the National Oceanic and Atmospheric Administration (NOAA) to create a time series of satellite data.

This is the second version of the compilation of global bio-optical in situ data described by Valente et al. (2016). A track-change file of the manuscript of the first version can be found in the Supplement. The new version has more data and a higher temporal and spatial coverage. The increases in the number of observations are mainly for chl_a, rrs and aph. In comparison with Valente et al. (2016), the observations of chl_a and aph have doubled in number and provide a better spatial coverage, especially in the Southern and Arctic Ocean. The rrs values also increased in number, but not as much in spatial coverage, because most of the new observations came from fixed locations.

The present second version is a compilation of data from sources used in the first version (MOBY, BOUSSOLE, AERONET-OC, SeaBASS, NOMAD, MERMAID, AMT, ICES, HOT and GeP&CO) plus data from additional sources (AWI, ARCSSPP, BARENTSSEA, BATS, BIOCHEM, BODC, CALCOFI, CCELTER, CIMT, COASTCOLOUR, ESTOC, IMOS, MAREDAT, PALMER, SEA-

DATANET, TPSS and TARA). The main differences from the first version are (1) some of the data sources used in the first version were updated (MOBY, AERONET, SeaBASS and HOT), (2) new data sources were added, (3) a new variable was compiled (total suspended matter), (4) the format of the database was modified and (5) two new flags were added.

Concerning the change in format, in Valente et al. (2016) the compilation was provided as one unique two-dimensional table. Now, given its increased size (136 250 rows and 1286 columns compared with 80 524 rows and 267 columns previously), the table has been broken into three smaller tables that relate to each other via one unique key identifying each row. One additional table is also provided to help with data manipulation. Despite this change, the compilation should still be viewed conceptually as one unique table, and as such, it is still described in that way. In the present version, two flags were added: `flag_time` and `flag_chl_method`. The first is because in the present version three data sources were used (ESTOC, MAREDAT and TPSS) where information on time (hour of the day) was not available. The time for these observations was set to 12:00:00 UTC and the observations were flagged with “1” in the column `flag_time`. A second flag was necessary, because in two data sources (ARCSSPP and SEADATANET) there was uncertainty on whether the compiled chlorophyll concentrations were measured using fluorometric, spectrophotometric or high-performance liquid chromatography (HPLC) methods. The compiled chlorophyll observations from these two data sources were flagged with “1” in the column `flag_chl_method` and were marked as `chl_a_fluor`.

Remote-sensing reflectance (rrs) is a primary ocean-colour product defined as $rrs = Lw/E_s$, where Lw is the upward water-leaving radiance and E_s is the total downward irradiance at sea level. Another quantity that is often required is the normalized water-leaving radiance (nLw) (Gordon and Clark, 1981), which is related to remote-sensing reflectance via $rrs = nLw/F_0$, where F_0 is the top-of-the-atmosphere solar irradiance. If not directly available, remote-sensing reflectance was calculated through the equations described above, depending on the format of the original data. The original data were acquired in an advanced form (e.g. time-averaged, extrapolated to surface) from nine data sources designed for ocean-colour validation and applications (MOBY, BOUSSOLE, AERONET-OC, SeaBASS, NOMAD, MERMAID, COASTCOLOUR, TARA, AWI), therefore only requiring the conversion to a common format. In the processing made by the space agencies, the quantity rrs is normalized to a single Sun-viewing geometry (Sun at zenith and nadir viewing) taking in account the bidirectional effects as described in Morel and Gentili (1996) and Morel et al. (2002). Thus, for consistency with satellite rrs product, the latter normalization was applied to the in situ rrs .

Chlorophyll a concentration is the conventional measure for phytoplankton biomass and one of the most widely used satellite ocean-colour products (IOCCG, 2008). To validate

satellite-derived chlorophyll a concentration, two different variables were compiled: one of these represents chlorophyll a measurements made through fluorometric or spectrophotometric methods, referred to hereafter as `chl_a_fluor` and the other is the chlorophyll concentration derived from HPLC measurements, referred to hereafter as `chl_a_hplc`. The chlorophyll data were compiled from the following 25 data sources: BOUSSOLE, SeaBASS, NOMAD, MERMAID, AMT, ICES, HOT, GeP&CO, AWI, ARCSSPP, BAR-ENTSSEA, BATS, BIOCHEM, BODC, CALCOFI, CCELLTER, CIMT, COASTCOLOUR, ESTOC, IMOS, MAREDAT, PALMER, SEADATANET, TPSS and TARA. One requirement for `chl_a_fluor` measurements was that they were made using in vitro methods (i.e. based on extractions of chlorophyll a). Although this severely decreased the number of observations, since in situ fluorometry (e.g. fluorometers mounted on CTDs) is widely available in oceanographic databases, it was decided to exclude such data because of potential problems with the calibration of in situ fluorometer data. The variable `chl_a_hplc` was calculated by summing all reported chlorophyll a derivatives, including divinyl chlorophyll a , epimers, allomers and chlorophyllide a . The two chlorophyll variables are retained separately in the database to facilitate their use. HPLC measurements could be considered of higher quality, but fluorometric measurements are more numerous. Thus one option for users is to use `chl_a_fluor` only when there are no `chl_a_hplc` measurements available. To be consistent with satellite-derived chlorophyll values, which are derived from the light emerging from the upper layer of the ocean, all chlorophyll observations in the top 10 m (replicates at the same depth, or measurements at multiple depths) were averaged if the coefficient of variation among observations was less than 50 %, otherwise they were discarded. The averages were then assigned to the surface. The depth of 10 m was chosen as a compromise between clear oligotrophic and turbid eutrophic waters. Other methods, such as chlorophyll depth averages using local attenuation conditions (Morel and Maritorena, 2001), require observations at multiple depths, which, given our decision to use only in vitro measurements, would have reduced considerably the final number of observations.

With regard to the inherent optical properties (aph , adg , bbp), if not already calculated and provided in the contributed datasets, they were computed from related variables that were available: particle absorption (ap), detrital absorption (ad), coloured dissolved organic matter (CDOM) absorption (ag) and total backscattering (bb). The following equations were used: $adg = ad + ag$, $ap = aph + ad$, and $bb = bbp + bbw$. For the latter equation, the variable bbw was computed using $bbw = bw/2$, where bw is the scattering coefficient of seawater derived from Zhang et al. (2009). The diffuse attenuation coefficient for downward irradiance (kd) did not require any conversion and was compiled as originally acquired. Observations of inherent optical properties (surface values) and the diffuse attenuation coefficient

for downward irradiance were acquired in total from six data sources designed for ocean-colour validation and applications (SeaBASS, NOMAD, MERMAID, AWI, COASTCOLOUR, TPSS), thus already subject to the processing routines of these datasets. Concerning total suspended matter, these data were compiled as originally available from MERMAID and COASTCOLOUR.

The merged dataset was compiled from 27 sets of in situ data, which were obtained individually either from archives that incorporate data from multiple contributors (SeaBASS, NOMAD, MERMAID, ICES, ARCSSPP, BIOCHEM, BODC, COASTCOLOUR, MAREDAT, SEADATANET) or from particular contributors, measurement programmes or projects (MOBY, BOUSSOLE, AERONET-OC, HOT, GeP&CO, AMT, AWI, BARENTSSEA, BATS, CALCOFI, CCELTER, CIMT, ESTOC, IMOS, PALMER, TPSS, TARA) and were subsequently homogenized and merged. Data contributors are listed in Table 2. There were methodological differences between datasets. Therefore, after acquisition, and prior to any merging, each set of data was preprocessed for quality control and converted to a common format. During this process, data were discarded if they had (1) unrealistic or missing date and geographic coordinate fields, (2) poor quality (e.g. original flags) or method of observation that did not meet the criteria for the dataset (e.g. in situ fluorescence for chlorophyll concentration), and (3) spuriously high or low data. For the last item, the following limits were imposed: $[0.001\text{--}100]\text{ mg m}^{-3}$ for *chl_a_fluor* and *chl_a_hplc*; $[0\text{--}0.15]\text{ sr}^{-1}$ for *rrs*; $[0.0001\text{--}10]\text{ m}^{-1}$ for *aph*, *adg* and *bbp*; $[0\text{--}1000]\text{ g m}^{-3}$ for *tsm*; and $[\text{aw}(\lambda)\text{--}10]\text{ m}^{-1}$ for *kd*, where *aw* is the pure water absorption coefficients derived from Pope and Fry (1997). Also during this stage, three metadata strings were attributed to each observation: dataset, subdataset and contributor. The dataset contains the name of the original set of data and can only be one of the following: *aoc*, *boussole*, *mermaid*, *moby*, *nomad*, *seabass*, *hot*, *ices*, *amt*, *gepco*, *arcssp*, *awi*, *barentssea*, *bats*, *biochem*, *bodc*, *calcofi*, *cc*, *ccelter*, *cimt*, *estoc*, *imos*, *maredat*, *palmer*, *seadatanet*, *tpss* or *tara*. The subdataset starts with the dataset identifier and is followed by additional information about the data, as `<dataset>_<cruise/station/site>` (e.g. *seabass_car81*). The contributor contains the name of the data contributor. An effort was made to homogenize the names of data contributors from the different sets of data. These three metadata are the link to trace each observation to its origin and were propagated throughout the processing. Finally, this processing stage ended with each set of data being scanned for replicate variable data and replicate station data, which when found were averaged if the coefficient of variation was less than 50 %, otherwise they were discarded. Replicates were defined as multiple observations of the same variable, with the same date, time, latitude, longitude and depth. Replicate station data were defined as multiple measurements of the same variable, with the same date, time, latitude and longitude. For the latter case, a search window of

5 min in time and 200 m in distance was given to account for station drift. A small number of observations that were identified as replicates had different subdataset identifiers (i.e. different cruise names). These observations were considered suspicious if the values were different and discarded. If the values were the same, one of the observations was retained. This possibly originated from the same group of data being contributed to an archive by two different data contributors.

Once a set of data was homogenized, its data were integrated into a unique table. This final merging focused on the removal of duplicates between the sets of data. Although some duplicates are known (e.g. MOBY, BOUSSOLE, AERONET-OC and NOMAD data are found in SeaBASS and MERMAID), others are unknown (e.g. how many data of GeP&CO, ICES, AMT and HOT are within NOMAD, SeaBASS and MERMAID). Therefore, duplicates were identified using the metadata (dataset and subdataset) when possible and temporal–spatial matches, as an additional precaution. For temporal–spatial matches, several thresholds were used, but typically 5 min and 200 m were taken to be sufficient to identify most duplicated data, which reflected small differences in time, latitude and longitude, between the different sets of data. Larger thresholds were used in some cases as a cautionary procedure. This was the case when searching for NOMAD data in other datasets, because NOMAD includes a few cases where merging of radiometric and pigment data was done with large spatial–temporal thresholds (Werdell and Bailey, 2005). A large temporal threshold was also used when integrating observations from the three data sources that did not have time available (ESTOC, MAREDAT and TPSS). In regard to all data, if duplicates were found, data from the NOMAD dataset were selected first, followed by data from individual projects or contributors (MOBY, BOUSSOLE, AERONET-OC, AMT, HOT, GeP&CO, AWI, BARENTSSEA, BATS, CALCOFI, CCELTER, CIMT, ESTOC, IMOS, PALMER, TPSS and TARA), and finally for the remaining datasets (SeaBASS, MERMAID, ICES, ARCSSPP, BIOCHEM, BODC, COASTCOLOUR, MAREDAT and SEADATANET). This procedure was chosen to preserve the NOMAD dataset as a whole, since it is widely used in ocean-colour validation. It should be noted that, by this procedure, data from individual projects or contributors may be listed under NOMAD (e.g. some PALMER data are found in NOMAD with metadata string *nomad_palmer_lter*). After giving priority to NOMAD, the priority was generally given to data from individual projects or contributors, but due to an incremental approach, where only new data are added to previous versions of the compilation, some data from individual projects or contributors (BATS, CALCOFI, CIMT, PALMER and TPSS) added in later stages may be found under other data sources. This occurs mainly for BATS and CALCOFI, which have their earlier chlorophyll data in SeaBASS with metadata strings *seabass_bats** and *seabass_cal**, and also CIMT, which has some of its data under COASTCOLOUR. After all data from

Table 1. The standard variables, nomenclatures and units in the final table.

Variable/column	Description and units
idx	Unique key identifying each row
time	GMT, <YYYY-MM-DD>T<HH:MM:SS>Z
lat	Decimal degree, $-90 : 90$, south negative
long	Decimal degree, $-180 : 180$, west negative
depth_water	Sampling depth (m) – all assigned to zero
chla_hplc	Total chlorophyll <i>a</i> concentration determined from the HPLC method (mg m^{-3})
chla_fluor	Chlorophyll <i>a</i> concentration determined from fluorometric or spectrophotometric methods (mg m^{-3})
rrs_<band>	Remote-sensing reflectance (sr^{-1})
aph_<band>	Algal pigment absorption coefficient (m^{-1})
adg_<band>	Detrital plus CDOM absorption coefficient (m^{-1})
bbp_<band>	Particle backscattering coefficient (m^{-1})
kd_<band>	Diffuse attenuation coefficient for downward irradiance (m^{-1})
tsm	Total suspended matter (g m^{-3})
etopo1	Water depth from ETOPO1 (m)
chla_hplc_dataset	Metadata string for chla_hplc
chla_hplc_subdataset	Metadata string for chla_hplc
chla_hplc_contributor	Metadata string for chla_hplc
chla_fluor_dataset	Metadata string for chla_fluor
chla_fluor_subdataset	Metadata string for chla_fluor
chla_fluor_contributor	Metadata string for chla_fluor
rrs_dataset	Metadata string for rrs
rrs_subdataset	Metadata string for rrs
rrs_contributor	Metadata string for rrs
aph_dataset	Metadata string for aph
aph_subdataset	Metadata string for aph
aph_contributor	Metadata string for aph
adg_dataset	Metadata string for adg
adg_subdataset	Metadata string for adg
adg_contributor	Metadata string for adg
bbp_dataset	Metadata string for bbp
bbp_subdataset	Metadata string for bbp
bbp_contributor	Metadata string for bbp
kd_dataset	Metadata string for kd
kd_subdataset	Metadata string for kd
kd_contributor	Metadata string for kd
tsm_dataset	Metadata string for tsm
tsm_subdataset	Metadata string for tsm
tsm_contributor	Metadata string for tsm
flag_time	“1” if observation without time (set to 12:00:00 UTC)
flag_chl_method	“1” if observation as unknown chlorophyll method

a given source were free of duplicates, they were merged consecutively by variable in the final table. During this process, we also searched for rows (stations) that were separated from each other by time differences less than 5 min and horizontal spatial differences of less than 200 m. When such rows were found, the observations in those rows were merged into a single row. The compiled merged data were compared with the original sets to certify that no errors occurred during the merging. As a final step, a water column (station) depth was recorded for each observation, which was the closest water column depth from the ETOPO1 global

relief model (National Geophysical Data Center ETOPO1; Amante and Eakins, 2009). For observations where the closest water depth was above sea level (e.g. data collected very near the coast), it was given the value of zero.

Data processing thus included two major steps: pre-processing and merging. The first step was related to each set of contributing datasets in particular and aimed to identify problems and convert the data of interest to a standard format. The second step dealt with the integration of data into one unique file and included the elimination of duplicated

Table 2. Original sets of data and data contributors in the final table.

Data source	Description	Data contributors
Marine Optical Buoy (MOBY)	Daily observations of remote-sensing reflectance, measured by a fixed mooring system, located west of the Hawaiian island of Lanai. Data compiled between 1997 and 2012. Data were obtained from the MOBY website. Compiled standard variable: rrs.	Paul DiGiacomo, Kenneth Voss
Bouée pour l'acquisition d'une Série Optique à Long Terme (BOUSSOLE)	High-frequency (15 min) observations of remote-sensing reflectance, from a fixed mooring system, located in the western Mediterranean Sea. Measurements of chlorophyll <i>a</i> concentration are also available at the mooring locations. Remote-sensing reflectance and chlorophyll <i>a</i> data were compiled between 2003–2012 and 2001–2012, respectively. Data were provided by David Antoine. Compiled standard variables: rrs and chla_hplc.	David Antoine, Vincenzo Vellucci
AErosol RObotic NETwork-Ocean Color (AERONET-OC)	Daily observations of remote-sensing reflectance, measured by modified sun photometers. Data compiled between 2002 and 2012. Sites included Abu_Al_Bukhoosh (~ 25° N, ~ 53° E), COVE_SEAPRISM (~ 36° N, ~ 75° W), Gloria (~ 44° N, ~ 29° E), Gustav_Dalen_Tower (~ 58° N, ~ 17° E), Helsinki Lighthouse (~ 59° N, ~ 24° E), LISCO (~ 40° N, ~ 73° W), Lucinda (~ 18° S, ~ 146° E), MVCO (~ 41° N, ~ 70° W), Palgrunden (~ 58° N, ~ 13° E), Venice (~ 45° N, ~ 12° E) and WaveCIS_Site_CSI_6 (~ 28° N, ~ 90° W). Data were obtained from the AERONET-OC website. Compiled standard variable: rrs.	Robert Arnone (WaveCIS), Sam Ahmed (LISCO), Vittorio Brando (Lucinda), Dick Crout (WaveCIS), Hui Feng (MVCO), Alex Gilerson (LISCO), Rick Gould (WaveCIS), Brent Holben (COVE-SEAPRISM), Susanne Kratzer (Palgrunden), Thomas Schroeder (Lucinda), Heidi M. Sosik (MVCO), Giuseppe Zibordi (Abu Al Bukhoosh, Gloria, Gustav Dalen Tower, Helsinki Lighthouse and Venice)
SeaWiFS Bio-optical Archive and Storage System (SeaBASS)	Global archive of in situ marine data from multiple contributors. Bio-optical global data between 1997 and 2012 were extracted from the SeaBASS website. Pigment data were mostly extracted using the Pigment search tool, which provides data directly from the archives. Radiometric data were extracted using the Validation tool, which only provides in situ data with matchups for ocean-colour sensors. Compiled standard variables: rrs, chla_hplc, chl_fluor, aph, adg, bbp and kd.	Robert Arnone, Kevin Arrigo, William Balch, Ray Barlow, Mike Behrenfeld, Sukru Besiktepe, Emmanuel Boss, Chris Brown, Douglas Capone, Ken Carder, Francisco Chavez, Alex Chekalyuk, Jay-Chung Chen, Dennis Clark, Herve Claustre, Lesley Clementson, Jorge Corredor, Glenn Cota, Yves Dandonneau, Heidi Dierssen, David Eslinger, Piotr Flatau, Robert Frouin, Carlos Garcia, Alex Gilerson, Joaquim Goes, Gwo-Ching Gong, Adriana Gonzalez-Silvera, Rick Gould, Larry Harding, Jon Hare, Stan B. Hooker, Chuanmin Hu, Milton Kampel, Sung-Ho Kang, Gary Kirkpatrick, Oleg Kopelevich, Sam Laney, Pierre Larouche, Jesus Ledesma, Zhongping Lee, Ricardo Letelier, Marlon Lewis, Steven Lohrenz, Mary Luz Canon, Antonio Mannino, John Marra, Chuck McClain, Christophe Menkes, Mark Miller, Greg Mitchell, Ru Morrison, James Mueller, Frank Muller-Karger, Ruben Negri, James Nelson, Norman Nelson, Mary Jane Perry, David Phinney, John Porter, Collin Roesler, David Siegel, Mike Sieracki, Jeffrey Smart, Raymond Smith, Heidi Sosik, James Spinirne, Dariusz Stramski, Rick Stumpf, Ajit Subramaniam, Chuck Trees, Michael Twardowski, Kenneth Voss, Marcel Wernand, Ronald Zaneveld, Eric Zettler, Giuseppe Zibordi, Richard Zimmerman

Table 2. Continued.

Data source	Description	Data contributors
NASA bio-Optical Marine Algorithm Dataset (NOMAD)	High-quality global dataset of coincident bio-optical in situ data. The dataset was built upon the SeaBASS archive. The current version (version 2.0 ALPHA, 2008) was used, with an additional set of columns of remote-sensing reflectance corrected for the bidirectional nature of the light field, provided by NOMAD creators. Data compiled between 1997 and 2007. Compiled standard variables: rrs, chl _a _hplc, chl _{fluor} , aph, adg, bbp and kd.	Robert Arnone, Kevin Arrigo, William Balch, Ray Barlow, Mike Behrenfeld, Chris Brown, Douglas Capone, Ken Carder, Francisco Chavez, Dennis Clark, Herve Claustre, Jorge Corredor, Glenn Cota, David Eslinger, Piotr Flatau, Robert Frouin, Rick Gould, Larry Harding, Stan B. Hooker, Oleg Kopelevich, Marlon Lewis, Antonio Mannino, John Marra, Mark Miller, Greg Mitchell, Tiffany Moisan, Ru Morrison, Frank Muller-Karger, James Nelson, Norman Nelson, David Siegel, Raymond Smith, Timothy Smyth, James Spinhirne, Dariusz Stramski, Rick Stumpf, Ajit Subramaniam, Kenneth Voss
MERIS Match-up In situ Database (MERMAID)	Global database of in situ bio-optical data matched with concurrent MERIS Level 2 satellite ocean-colour products. The Extract matchup tool to acquire data was used. Data were compiled between 2002 and 2012. Access has been granted through a signed service level agreement. Compiled standard variables: rrs, chl _a _hplc, chl _{fluor} , aph, adg, bbp and kd.	Simon Belanger, Jean-Francois Berthon, Vanda Brotas, Elisabetta Canuti, Pierre Yves Deschamps, Annelies Hommersom, Mati Kahru, Holger Klein, Hubert Loisel, David McKee, Greg Mitchell, Michael Ondrusek, Michel Repecaud, David Siegel, Gavin Tilstone, Giuseppe Zibordi
Atlantic Meridional Transect (AMT)	Multidisciplinary programme that makes biological, chemical and physical oceanographic measurements during an annual voyage between the United Kingdom and destinations in the South Atlantic. It has compiled observations of chlorophyll <i>a</i> concentration between 1997 (AMT5) and 2005 (AMT17). Data were provided by the British Oceanographic Data Centre (BODC). Compiled standard variables: chl _a _hplc and chl _{fluor} .	Ray Barlow, Stuart Gibb, Victoria Hill, Patrick Holligan, Gerald Moore, Leonie O'Dowd, Alex Poulton, Emilio Suarez
International Council for the Exploration of the Sea (ICES)	Database of several collections of data related to the marine environment. It has compiled observations of chlorophyll <i>a</i> concentration in the northern European seas, between 1997 and 2012. Data were provided by the ICES database on the marine environment (2014, Copenhagen, Denmark). Compiled standard variables: chl _a _hplc and chl _{fluor} .	Not available
Hawaii Ocean Time-series (HOT)	Multidisciplinary programme that makes repeated biological, chemical and physical oceanographic observations near Oahu, Hawaii. Measurements of chlorophyll <i>a</i> concentration between 1997 and 2012 were extracted from the project website. Compiled standard variables: chl _a _hplc and chl _{fluor} .	Bob Bidigare, Matthew Church, Ricardo Letelier, Jasmine Nahorniak
Geochemistry, Phytoplankton, and Color of the Ocean (GeP&CO)	Programme of in situ data collection aboard a merchant ship from France to New Caledonia, between 1999 and 2002. Measurements of chlorophyll <i>a</i> concentration were obtained from the project website. Compiled standard variables: chl _a _hplc and chl _{fluor} .	Yves Dandonneau
ARCSSPP	Arctic System Science Primary Production database. Available from the NODC FTP site. Compiled standard variable: chl _{fluor} .	Patricia Matrai

Table 2. Continued.

Data source	Description	Data contributors
AWI	Several 2007–2012 cruises in the Atlantic, Pacific and Southern Ocean from Astrid Bracher's group at AWI. Provided by Astrid Bracher. Available from PANGAEA. Compiled standard variables: chl _a _fluor, rrs and aph.	Astrid Bracher
BARENTSSEA	Data collection from cruises of the Institute of Marine Research (Norway) mainly around the Barents Sea. Provided by Knut Yngve Børsheim. Compiled standard variable: chl _a _fluor.	Knut Yngve Børsheim
BATS	Data collection from the Bermuda Atlantic Time-series Study. Available from BATS website. Compiled standard variables: chl _a _fluor and chl _a _hplc.	Not available
BIOCHEM	The Fisheries and Oceans Canada database for biological and chemical data. Mostly data from Gulf of St Lawrence. Available from BIOCHEM website. Compiled standard variable: chl _a _fluor.	Diane Archambault, Hughes Benoit, Esther Bonneau, Eugene Colbourne, Alain Gagne, Yves Gagnon, Tom Hurlbut, Catherine Johnson, Pierre Joly, Maurice Levasseur, Patrick Ouellet, Jacques Plourde, Luc Savoie, Michael Scarratt, Philippe Schwab, Michel Starr, François Villeneuve
BODC	British Oceanographic Data Centre. Mainly European seas. Provided by BODC. Compiled standard variables: chl _a _fluor and chl _a _hplc.	Not available
CALCOFI	Cruise data from the California Cooperative Oceanic Fisheries Investigations programme. Available from CalCOFI website. Compiled standard variable: chl _a _fluor.	Ralf Goericke
CCELER	Cruise data from California Current Ecosystem Long Term Ecological Research. Available from CCELER website. Compiled standard variable: chl _a _fluor.	Ralf Goericke
CIMT	Sampling from the Center for Integrated Marine Technology (California). Available from CIMT website. Compiled standard variable: chl _a _fluor.	Raphael Kudela
COASTCOLOUR	Quality-controlled compilation of bio-optical data in several coastal sites. Available from PANGAEA. Compiled standard variables: chl _a _fluor, chl _a _hplc, rrs, aph, adg, bbp and tsm.	Not available
ESTOC	Sampling from the Estación Europea de Series Temporales del Oceano Canary Islands. Provided by Andrés Cianca. Compiled standard variable: chl _a _fluor.	Octavio Llinas and Andres Cianca
IMOS	Australian National Reference Stations. Available from the Australian Ocean Data Network (AODN). Compiled standard variable: chl _a _hplc.	Lesley Clementson
MAREDAT	Quality-controlled global compilation of chl _a HPLC. Available from PANGAEA. Compiled standard variable: chl _a _hplc.	Ray Barlow, Robert Bidigare, Herve Claustre, Denise Cummings, Giacomo DiTullio, Chris Gallienne, Ralf Goericke, Patrick Holligan, David Karl, Michael Landry, Michael Lomas, Michael Lucas, Jean-Claude Marty, Walker Smith, Denise Smythe-Wright, Rick Stumpf, Emilio Suarez, Koji Suzuki, Maria Vernet, Simon Wright

Table 2. Continued.

Data source	Description	Data contributors
PALMER	Palmer station Long-Term Ecological Research (Antarctica). Available from PALMER website. Compiled standard variables: chl _a _fluor and chl _a _hplc.	Oscar Schofield, Raymond Smith, Maria Vernet.
SEADATANET	Global archive of in situ marine data. Available from SEADATANET website. Compiled standard variable: chl _a _fluor.	Not available
TPSS	Compilation of bio-optical data predominantly from the northwestern Atlantic but also from the Indian Ocean, South Pacific and central Atlantic. Provided by Trevor Platt and Shubha Sathyendranath. Compiled standard variables: chl _a _hplc, chl _a _fluor and aph.	Trevor Platt, Shubha Sathyendranath.
TARA	Data collection from the TARA global transects. Provided by Emmanuel Boss. All data available in SeaBASS. Compiled standard variables: chl _a _hplc and rrs.	Emmanuel Boss

data between the individual sets of data. In the next subsections a brief overview of each original set of data is provided.

2.2 Preprocessing of each set of data

2.2.1 Marine Optical Buoy (MOBY)

MOBY is a fixed mooring system operated by the National Oceanic and Atmospheric Administration (NOAA) that provides a continuous time series of water-leaving radiance and surface irradiance in the visible region of the spectra since 1997. The site is located a few kilometres west of the Hawaiian island of Lanai where the water depth is about 1200 m. Since its deployment, MOBY measurements have been the primary basis for the on-orbit vicarious calibrations of the SeaWiFS and MODIS ocean-colour sensors. A full description of the MOBY system and processing is provided in Clark et al. (2003). Data are freely available for scientific use at the MOBY Gold directory. The products of interest are the Scientific Time Series files, which refer to MOBY data averaged over sensor-specific wavelengths and particular hours of the day (around 20:00–23:00 UTC). For this work, the satellite band-average products for SeaWiFS, MODIS AQUA, MERIS, VIIRS and the Ocean and Land Colour Instrument (OLCI) were compiled from the R2017 Reprocessing. The in-band-average subproduct was used, and to maintain the highest quality only data determined from the upper two arms (Lw1) and flagged as good quality were acquired. Data from the MOBY203 deployment were discarded due to the absence of surface irradiance data. The compiled variable was the remote-sensing reflectance, rrs, which was computed from the original water-leaving radiance (Lw) and surface irradiance (Es). The water-leaving

radiance were corrected for the bidirectional nature of the light field (Morel and Gentili, 1996; Morel et al., 2002) using the same lookup table and method as that used in the SeaWiFS Data Analysis System (SeaDAS) processing code. The MOBY data were reprocessed in 2017 (MOBY R2017 Reprocessing) to include various improvements in the calibration of the instrument and post-processing, which include (1) a new method to extrapolate the upwelling radiance attenuation coefficient to the surface, (2) an increase in arm depth by 0.234 m and (3) a single pixel shift in the data for the red spectrograph collected at a bin factor of 384. Only the last two changes were included in present compilation. As mentioned before, the MOBY data compiled in this work are sensor-specific. Therefore, attention is necessary to use the correct MOBY data when validating a particular sensor. The way MOBY data are stored in the final merged table is consistent with the original wavelengths; however, these wavelengths can differ from what is sometimes expected to be the central wavelength of a given band and sensor. Irrespective of the wavelength where MOBY data are stored in the final table, for validation of bands 1–6 of SeaWiFS, MOBY data stored in the final merged table at 412, 443, 490, 510, 555 and 670 nm, respectively, should be used. For validation of bands 1–6 of MODIS AQUA, MOBY data stored in the final merged table at 416, 442, 489, 530, 547 and 665 nm, respectively, should be used. For validation of bands 1–7 of MERIS, MOBY data stored in the final merged table at 410.5, 440.4, 487.8, 507.7, 557.6, 617.5 and 662.4 nm, respectively, are the appropriate data. For validation of bands 2–8 of OLCI, MOBY data stored in the final merged table at 412.0676, 443.1898, 490.7176, 510.6403, 560.5796, 620.626 nm and 665.3737, respectively, are the appropriate

data. Finally, for validation of bands 1–5 of VIIRS, MOBY data stored in the final merged table at 412.9, 444.5, 481.2, 556.3 and 674.6 nm, respectively, are the appropriate data.

2.2.2 BOUée pour l'acquiSition de Séries Optiques à Long terme (BOUSSOLE)

The BOUSSOLE project started in 2001 with the objective of establishing a time series of bio-optical properties in oceanic waters to support the calibration and validation of ocean-colour satellite sensors (Antoine et al., 2006). The project consists of a monthly cruise programme and a permanent optical mooring (Antoine et al., 2008). The mooring collects radiometry and inherent optical properties (IOPs) in continuous mode every 15 min at two depths (4 and 9 m nominally). The monthly cruises are devoted to the mooring servicing, to the collection of vertical profiles of radiometry and IOPs, and to water sampling at 11 depths from the surface down to 200 m, for subsequent analyses including phytoplankton pigments, particulate absorption, CDOM absorption and suspended particulate matter load. The BOUSSOLE mooring is in the western Mediterranean Sea at a water depth of 2400 m. All pigment (2001–2012) and radiometric (2003–2012) data were provided by the principal investigator. The compiled variables were rrs and chl_a_hplc. Observations of the diffuse attenuation coefficient (*k_d*) were not included in the present compilation, as they were under internal quality revision at the time of data acquisition. Remote-sensing reflectance was computed from the original fully normalized water-leaving radiance (*nLw_{ex}*), which is the normalized water-leaving radiance (*nLw*, previously described), with a correction for the bidirectional nature of the light field (Morel and Gentili, 1996; Morel et al., 2002). The solar irradiance (*F_o*) was computed from two available variables in the original set of data: the normalized water-leaving radiance (*nLw*) and the remote-sensing reflectance (rrs), using the equation $F_o = nLw/rrs$. Only radiometric observations that meet the following criteria were used: (1) tilt of the buoy was less than 10°, (2) the buoy was not lowered by more than 2 m as compared to its nominal water line (to ensure the Es reference sensor is above water and exempt from sea spray) and (3) the solar irradiance was within 10 % of its theoretical clear-sky value (determined from Gregg and Carder, 1990). The latter criterion was used to select clear skies only. An additional quality control was to remove observations that were 50 % higher or lower than the daily average. This removed a small number of spikes in the time series. The final quality control step was to remove days where the standard deviation was more than half of the daily average. This was meant to identify days with high variability. Very few days ($N = 2$) were removed with this test. These quality control criteria were applied per wavelength, which resulted in some observations with an incomplete spectrum.

2.2.3 AERosol RObotic NETwork-Ocean Color (AERONET-OC)

AERONET-OC is a component of AERONET, including sites where sun photometers operate with a modified measurement protocol leading to the determination of the fully normalized water-leaving radiance (Zibordi et al., 2006, 2009). As a result of collaboration between the Joint Research Centre (JRC) and NASA, this component has been specifically developed for the validation of ocean-colour radiometric products. The strength of AERONET-OC is “the production of standardized measurements that are performed at different sites with identical measuring systems and protocols, calibrated using a single reference source and method, and processed with the same codes” (Zibordi et al., 2006, 2009). All high-quality data (Level-2) were acquired from the project website for 11 sites: Abu_AI_Bukhoosh (~ 25° N, ~ 53° E), COVE_SEAPRISM (~ 36° N, ~ 75° W), Gloria (~ 44° N, ~ 29° E), Gustav_Dalen_Tower (~ 58° N, ~ 17° E), Helsinki Lighthouse (~ 59° N, ~ 24° E), LISCO (~ 40° N, ~ 73° W), Lucinda (~ 18° S, ~ 146° E), MVCO (~ 41° N, ~ 70° W), Palgrunden (~ 58° N, ~ 13° E; Philipson et al., 2016), Venice (~ 45° N, ~ 12° E) and WaveCIS_Site_CSI_6 (~ 28° N, ~ 90° W). The compiled variable was rrs. Remote-sensing reflectance was computed from the original fully normalized water-leaving radiance (see Sect. 2.2.2 for definition). The solar irradiance (*F_o*), which is not part of the AERONET-OC data, was computed from the Thuillier et al. (2003) solar spectrum irradiance, by averaging *F_o* over a wavelength-centred 10 nm window. Data were compiled for the exact wavelengths of each record, which can change over time for a given site depending on the specific instrument deployed.

In comparison with the previous compilation of AERONET-OC data from the Lucinda site, a calibration correction was applied by NASA affecting instrument SN-520. All radiometric data from this instrument provided by NASA prior to October 2018 were underestimated by approximately a factor of 2 due to incorrect application of instrument gains during the processing.

2.2.4 SeaWiFS Bio-optical Archive and Storage System (SeaBASS)

SeaBASS is one of the largest archives of in situ marine bio-optical data (Werdell et al., 2003). It is maintained by NASA's Ocean Biology Processing Group (OBPG) and includes measurements of optical properties, phytoplankton pigment concentrations, and other related oceanographic and atmospheric data. The SeaBASS database consists of in situ data from multiple contributors, collected using a variety of measurement instruments with consistent, community-vetted protocols from several marine platforms such as fixed buoys, handheld radiometers and profiling instruments. Quality control of the received data includes a rigorous series of pro-

protocols that range from file format verification to inspection of the geophysical data values (Werdell et al., 2003). Radiometric data were acquired through the Validation search tool, which provided in situ data with matchups for particular ocean-colour sensors (Bailey and Werdell, 2006). The criterion in the search query was defined to have the minimal flag conditions in the satellite data, to retrieve a greater number of matchups and, therefore, in situ data. Regarding phytoplankton pigment data, the majority were acquired through the Pigment search tool, which provided pigment data directly from the archives. As was stated in the SeaBASS website, the Pigment search tool was originally designed to return only in vitro fluorometric measurements, which is consistent with our approach, but over time chlorophyll *a* measurements made using other methods (e.g. in situ fluorometry) were included in the retrieved pigment data. In the pigment data used in this work, a large number of in situ fluorometric measurements from continuous underway instruments were identified and discarded. These data were initially identified from cruises with more than 50 observations per day and then rechecked in the SeaBASS website to confirm whether indeed they were continuous underway measurements. A total of 120 412 such measurements were identified and discarded. Given the large volume of this group of data, it is possible that some chlorophyll *a* observations from in situ methods may have escaped the scrutiny and persisted into the final merged dataset. The Pigment search tool was recently discontinued, and, instead, the File search tool can be used, which was also used here to acquire chlorophyll observations for more recent years. The compiled variables from SeaBASS data were *rrs*, *chl_a_hplc*, *chl_a_fluor*, *aph*, *adg*, *bbp* and *kd*. No conversion was necessary since all variables were acquired in the desired format.

2.2.5 NASA bio-Optical Marine Algorithm Dataset (NOMAD)

NOMAD is a publicly available dataset compiled by the NASA OBPG at the Goddard Space Flight Center. It is a high-quality global dataset of coincident radiometric and phytoplankton pigment observations for use in ocean-colour algorithm development and satellite-data product-validation activities (Werdell and Bailey, 2005). The source of the bio-optical data is the SeaBASS archive; therefore, many dependencies exist between these two datasets, which were addressed during the merging. The current version (version 2.0 ALPHA, 2008) includes data from 1991 to 2007 and an additional set of observations of inherent optical properties. The current version was used in this work, but with an additional set of columns of remote-sensing reflectance corrected for the bidirectional effects (Morel and Gentili, 1996; Morel et al., 2002). This additional set of columns was provided directly by the NOMAD creators. The compiled variables were *rrs*, *chl_a_hplc*, *chl_a_fluor*, *aph*, *adg*, *bbp* and *kd*. Conversion was necessary only for *aph*, *adg* and *bbp* and fol-

lowed the procedures described in Sect. 2.1. For the calculation of *bbp* the variable *bb* was used with a smooth fitting to remove noise. A portion of the NOMAD data were optically weighted (for methods see Werdell and Bailey, 2005). These data are not consistent with the protocols chosen in this work, but these observations were retained since NOMAD is a widely used dataset in ocean-colour validation.

2.2.6 MERIS Match-up In situ Database (MERMAID)

MERMAID provides in situ bio-optical data matched with concurrent and comparable MERIS Level 2 satellite ocean-colour products (Barker, 2013a, b). The MERMAID in situ database consists of data from multiple contributors, measured using a variety of instruments and protocols from several marine platforms such as fixed buoys, handheld radiometers and profiling instruments. Comprehensive quality control and protocols are used by MERMAID to integrate all the data into a common and comparable format (Barker, 2013a, b). Access to MERMAID data is limited to the MERIS Validation Team, the MERIS Quality Working Group and to the in situ data contributors. For this work, access has been granted to the MERMAID database through a signed service level agreement. The MERMAID data includes subsets of several datasets used in this compilation (MOBY, AERONET-OC, BOUSSOLE, NOMAD). These observations were removed from the MERMAID dataset to avoid duplication (as discussed in Sect. 2.1). The compiled variables were *rrs*, *chl_a_hplc*, *chl_a_fluor*, *aph*, *adg*, *bbp*, *kd* and *tsm*. Remote-sensing reflectance was calculated by dividing the original fully normalized water-leaving reflectance (R_{w_ex}), which is the water-leaving reflectance ($R_w = \pi L_w / E_s$), with a correction for the bidirectional nature of the light field (Morel and Gentili, 1996; Morel et al., 2002), by π . Conversion was also necessary for *aph*, *adg* and *bbp* and followed the procedures described in Sect. 2.1.

2.2.7 Hawaii Ocean Time-series (HOT)

HOT programme provides repeated comprehensive observations of the hydrography, chemistry and biology of the water column at a station located 100 km north of Oahu, Hawaii, since October 1988 (Karl and Michaels, 1996). This site is representative of the North Pacific subtropical gyre. Cruises are made approximately once a month to the deep-water station ALOHA (A Long-Term Oligotrophic Habitat Assessment; 22°45' N, 158°00' W). Pigment data (*chl_a_hplc* and *chl_a_fluor*) were extracted directly from the project website. Radiometric measurements from the HOT project are also available, but observations of *rrs* and *kd* from the HOT project were acquired in this work as part of the SeaBASS dataset.

2.2.8 Geochemistry, Phytoplankton, and Color of the Ocean (GeP&CO)

GeP&CO is part of the French PROOF programme and aims to describe and understand the variability of phytoplankton populations, as well as to assess its consequences on the geochemistry of the oceans (Dandonneau and Niang, 2007). It is based on the quarterly travels of the merchant ship *Conship London* from France to New Caledonia in the Pacific. A scientific observer sailed on each trip and operated the sampling for surface water, filtration, various measurements and checking at several times of each day. The experiment started in October 1999 and finished in July 2002. Pigment data were extracted from the project website. Additional pigment data obtained during the OISO-4 cruise in the southern Indian Ocean on board R/V *Marion Dufresne* (January–February 2000) were added. The samples were measured by Yves Dandonneau following the method used in the GeP&CO project. The compiled variable was `chl_a_hplc` and `chl_a_fluor`.

2.2.9 Atlantic Meridional Transect (AMT)

AMT is a multidisciplinary programme, which undertakes biological, chemical and physical oceanographic research during an annual voyage between the UK and destinations in the South Atlantic (Robinson et al., 2006). The programme was established in 1995 and since then has completed 28 research cruises. Pigment data between 1997 (AMT5) and 2005 (AMT17) were provided by the British Oceanographic Data Centre (BODC) following a specific request for discrete observations of chlorophyll *a* concentration since 1997. The AMT data were isolated by searching for the string AMT in the cruise columns, and the respective principal investigators were then searched for individually in a separated metadata file. Data not flagged with highest quality or without method of measurement were not used. For any interest in the original data, BODC is the point of contact, which ensures that if there are any updates, the most recent data are supplied. The compiled variables are `chl_a_hplc` and `chl_a_fluor`.

2.2.10 International Council for the Exploration of the Sea (ICES)

ICES is a network of more than 4000 scientists from almost 300 institutes, with 1600 scientists participating in activities annually. The ICES Data Centre manages a number of large dataset collections related to the marine environment covering the northeastern Atlantic, Baltic Sea, Greenland Sea and Norwegian Sea. The majority of data originate from national institutes that are part of the ICES network of member countries. Data were provided (on 28 April 2014) from the ICES database on the marine environment (Copenhagen, Denmark) following a specific request. The ICES data were made available under the ICES data policy, and if there is any conflict between this and the policy adopted by the users,

then the ICES policy applies. The compiled variables were `chl_a_hplc` and `chl_a_fluor`.

2.2.11 Arctic System Science Primary Production (ARCSSPP)

The ARCSSPP database is a synthesis of observations between 1954 and 2006 from the Arctic Ocean and northern seas (Matrai et al., 2013). The observations were acquired from data repositories, publications or provided by individual investigators. The database includes quality-controlled observations of productivity and chlorophyll *a*, photosynthetically available radiation and hydrographic parameters. This collection of data was acquired at <http://www.nodc.noaa.gov/cgi-bin/OAS/prd/accession/download/63065> (last access: 10 July 2019). For the present work, only observations of chlorophyll *a* concentration with known time zones were used. The compiled chlorophyll observations were from discrete samples, but the exact method (either `chl_a_fluor` or `chl_a_hplc`) was not available for all observations. Thus, the ARCSSPP chlorophyll observations were marked as `chl_a_fluor`, although some might have been from HPLC measurements, and were flagged with “1” in the column `flag_chl_a_method`. The compiled variable was `chl_a_fluor`.

2.2.12 Data provided by Astrid Bracher, Alfred Wegener Institute Helmholtz Centre for Polar and Marine Research (AWI)

In this work, the AWI data source refers to the group of observations that were provided to the OC-CCI project by Astrid Bracher. These are bio-optical observations collected during several cruises in the Atlantic and Pacific Ocean. All data were available through the PANGAEA repository. Observations of concentration of chlorophyll *a* as well as 1 nm spectrally resolved remote-sensing reflectances and the algal pigment absorption coefficient were considered. The methods for these observations are described by Taylor et al. (2011a). For chlorophyll, data from the following cruises were used: ANT-XXIV/1, ANT-XXIV/4, ANT-XXVI/4 and MSM18/3 (<https://doi.org/10.1594/PANGAEA.847820>; Bracher et al., 2015); SO202/2 (<https://doi.org/10.1594/PANGAEA.820607>; Zindler et al., 2013); ANT-XXVII/2 (<https://doi.org/10.1594/PANGAEA.848590>; Bracher, 2015); ANT-XXV/1 (<https://doi.org/10.1594/PANGAEA.819099>; Taylor et al., 2011b); and ANT-XXVIII/3 and SO218 (<https://doi.org/10.1594/PANGAEA.848591>; Soppa et al., 2014). Concerning remote-sensing reflectances, the observations taken during cruises ANT-XXIV/4 and ANT-XXVI/4 (<https://doi.org/10.1594/PANGAEA.847820>; Bracher et al., 2015) and cruise ANT-XXV/1 (<https://doi.org/10.1594/PANGAEA.819099>; Taylor et al., 2011b) were gathered. The remote-sensing reflectances

were corrected for the bidirectional nature of the light field (Morel and Gentili, 1996; Morel et al., 2002). The absorption coefficients were taken during cruise SO202/2 (<https://doi.org/10.1594/PANGAEA.820607>; Zindler et al., 2013), cruise ANT_XXV/1 (<https://doi.org/10.1594/PANGAEA.819099>; Taylor et al., 2011b), and cruises ANT-XXVI/3 and ANT-XXVIII/3 (<https://doi.org/10.1594/PANGAEA.819617>; Soppa et al., 2013). The compiled variables were `chl_a_hplc`, `rrs` and `aph`.

2.2.13 Bermuda Atlantic Time-series Study (BATS)

BATS is a long-term study by the Bermuda Institute of Ocean Sciences based on regular cruises in the western Atlantic Ocean (Sargasso Sea) since 1988. The cruises at the BATS site ($\sim 31^{\circ}40' \text{N}$, $64^{\circ}10' \text{W}$) sample ocean temperature and salinity but are focused on biogeochemical variables such as nutrients, dissolved inorganic carbon, oxygen, HPLC of pigments, primary production and sediment trap flux. In this work all the phytoplankton pigment data available from the BATS website (<http://bats.bios.edu/bats-data/>, last access: 10 July 2019) were considered, which also included regional and transect cruises not specific to the nominal BATS site. The compiled variables were `chl_a_hplc` and `chl_a_fluor`.

2.2.14 Data provided by Knut Yngve Børshheim (BARENTSSEA)

The BARENTSSEA data source refers to a group of observations that were provided to OC-CCI project by Knut Yngve Børshheim. This collection was developed using data from the archives of the Institute of Marine Research (Norway). It comprises observations of temperature, salinity and chlorophyll *a* routinely collected by cruises, mainly in the North Sea, the Norwegian Sea and the Barents Sea between 1997 and 2013. The chlorophyll *a* concentration was measured by filtering and extraction using Turner fluorometers. The compiled variable was `chl_a_fluor`.

2.2.15 The Fisheries and Oceans Canada database for biological and chemical data (BIOCHEM)

BioChem is an archive of marine biological and chemical data maintained by Fisheries and Oceans Canada (DFO, 2018; Devine et al., 2014). The available observations are from department research initiatives and collected in areas of Canadian interest. Available parameters include pH, nutrients, chlorophyll, dissolved oxygen and other plankton data (species and biomass). Chlorophyll measurements from in vitro fluorometric methods were extracted (from <http://www.dfo-mpo.gc.ca/science/data-donnees/biochem/index-eng.html>, last access: 10 July 2019) with close guidance by the BioChem help desk, confirming quality and methods. The used data span from 1997

to 2014 and were mainly from the Gulf of St Lawrence (western North Atlantic). The compiled variable was `chl_a_fluor`.

2.2.16 British Oceanographic Data Centre (BODC)

BODC is the designated marine science data centre for the United Kingdom. The data used in this work derive from a specific request for discrete observations of chlorophyll *a* concentration since 1997. Initially, this request was used to compile AMT data (see Sect. 2.2.9). The remaining data comprising observations of chlorophyll *a* concentration from fluorometric and HPLC methods, mostly sampled in the North Atlantic, were analysed and added (the dataset string for this data source is `bodc`). Data not flagged with highest quality or without method of measurement were discarded. The compiled variables were `chl_a_hplc` and `chl_a_fluor`.

2.2.17 California Cooperative Oceanic Fisheries Investigations (CALCOFI)

CalCOFI is a partnership of the California Department of Fish and Wildlife, National Oceanic and Atmospheric Administration Fisheries Service, and Scripps Institution of Oceanography. CalCOFI has conducted quarterly cruises off southern and central California since 1949. Data collected in the upper 500 m include temperature, salinity, oxygen, nutrients, chlorophyll, primary productivity, plankton biodiversity and biomass. For this work, only observations of chlorophyll *a* concentration derived from fluorometric methods flagged with highest quality were used. Data were acquired from the file `CalCOFI_Database_194903-201701_csv_20Sept2017.zip` available at <http://www.calcofi.org> (last access: 10 July 2019) The compiled variable was `chl_a_fluor`.

2.2.18 California Current Ecosystem Long-Term Ecological Research (CCELTER)

CCELTER investigates the California Current coastal pelagic ecosystem, with a focus on long-term forcing. The CCELTER data include primary and derived measurements from both Process and CalCOFI-augmented cruises, as well as other time series. CCELTER data include variables from the physical environment, biogeochemistry and biological populations/communities. For this work chlorophyll observations measured from discrete bottle samples from CCELTER Process cruises determined by extraction and bench fluorometry (<https://doi.org/10.6073/pasta/7feb632dabb30f0e79683017721a83c7>; Goericke, 2017) were compiled. The compiled variable was `chl_a_fluor`.

2.2.19 Center for Integrated Marine Technologies (CIMT)

CIMT was a non-operational programme where marine scientists from different disciplines and institutions combine their efforts on observations directed towards understanding the central California upwelling system. The CIMT archived data include coastal ocean observations from satellites, ship-board data, moorings and large marine animal movements. For this work, pigment data from discrete bottle samples taken during CIMT monthly cruises were used. Data were acquired from the project website (https://cimt.ucsc.edu/data_portal.htm, last access: 10 July 2019). The compiled variable was `chl_a_fluor`.

2.2.20 CoastColour Round Robin (COASTCOLOUR)

COASTCOLOUR datasets were designed to evaluate the performance of ocean-colour satellite algorithms in the retrieval of water quality parameters in coastal waters (Nechad et al., 2015a). Three types of COASTCOLOUR datasets are available: (1) a matchup dataset where in situ bio-optical observations are available simultaneously with a cloud-free MERIS product, (2) an in situ reflectance dataset where an in situ reflectance is available simultaneously with an in situ measurement of chlorophyll *a* concentration and/or total suspended matter, and (3) a simulated dataset where reflectances were generated by a radiative transfer model. This work used the matchup dataset, which includes most of the in situ measurements and is available at <https://doi.org/10.1594/PANGAEA.841950> (Nechad et al., 2015b). The matchup dataset provides optical, biogeochemical and physical data collections at 17 sites across the globe. From this dataset, observations of reflectance, chlorophyll *a*, total suspended matter and IOPs were compiled. The remote-sensing reflectances were corrected for the bidirectional nature of the light field (Morel and Gentili, 1996; Morel et al., 2002). The compiled variables were `rrs`, `chl_a_hplc`, `chl_a_fluor`, `aph`, `adg`, `bbp` and `tsm`.

2.2.21 European Station for Time series in the Ocean, Canary Islands (ESTOC)

ESTOC is an open-ocean monitoring site located in the eastern North Atlantic subtropical gyre. ESTOC was initiated in 1991 with particle flux measurements and in 1994 began standard observations of the water column, in addition to the deployment of a current meter mooring. The core parameters measured at ESTOC include salinity, temperature, current speed, nutrients, chlorophyll, inorganic carbon, particulate organic carbon and nitrogen, and sinking particle flux (Neuer et al., 2007). For this work measurements of chlorophyll *a* concentration from monthly cruises from 1994 to 2011 were used. These data were provided to CCI following a specific request. The time of day was unavailable and was set to 12:00:00 UTC. These observations were flagged

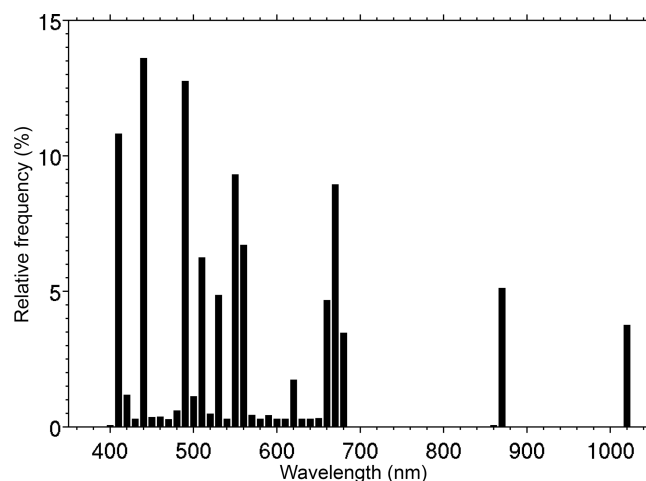


Figure 1. Relative spectral frequency of remote-sensing reflectance in the final table, using 10 nm wide class intervals, defined as the ratio of the number of observations at a particular waveband to the total number of observations at all wavebands, multiplied by 100 to report results in percentage. Data at a total of 611 unique wavelengths, between 404.7 and 1022.1 nm, were compiled.

with “1” in the column `flag_time`. The compiled variable was `chl_a_fluor`.

2.2.22 Integrated Marine Observing System (IMOS)

IMOS is a national collaborative research infrastructure supported by Australian Government. Since 2006, IMOS has operated a wide range of observing equipment throughout the coastal and open ocean around Australia, making all data openly available to the scientific community and other stakeholders and users. In this work, the IMOS dataset refers only to a data collection entitled IMOS National Reference Station (NRS) – Phytoplankton HPLC Pigment Composition Analysis, which was acquired from the Australian Ocean Data Network Portal (<https://portal.aodn.org.au>, last access: 10 July 2019). This dataset comprises phytoplankton pigment composition measured by HPLC collected as part of the IMOS National Mooring Network – National Reference Station field sampling. Pigment sampling was conducted on a monthly basis with small vessels at nine sites. The IMOS also hosts the Satellite Remote Sensing Bio-optical Database, which comprises phytoplankton pigment composition measured by HPLC collected as part of a suite of bio-optical parameters from samples collected from research voyages in Australian waters; however, for this work, the observations from the IMOS Bio-optical Database were acquired as a subset of the SeaBASS dataset. The compiled variable was `chl_a_hplc`.

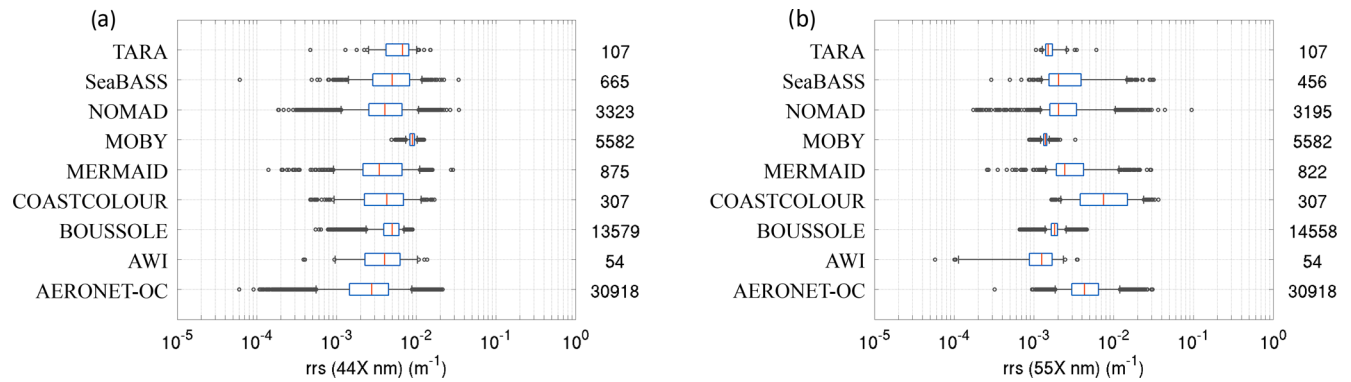


Figure 2. The distribution of (a) rrs at 44X nm and (b) rrs at 55X nm. Data were first searched for at 445 and 555 nm and then with a search window of up to 8 nm to include data at 547 nm. The black boxes delimit the percentiles 0.25 and 0.75 of the data and the black horizontal lines show the extension of up to percentiles 0.05 and 0.95. The red line represents the median value and the black circles the values below (and above) the percentile 0.05 (0.95). The number of measurements of each dataset is reported on the right axis of the graph.

2.2.23 MARine Ecosystem DATA (MAREDAT)

The MAREDAT database is a global assemblage of pigments measured by HPLC (Peloquin et al., 2013a) from the combination of 136 independent field datasets, solicited from investigators and databases. The database provides high-quality measurements of taxonomic pigments including chlorophyll *a* and *b*, 19'-butanoyloxyfucoxanthin, 19'-hexanoyloxyfucoxanthin, alloxanthin, divinyl chlorophyll *a*, fucoxanthin, lutein, peridinin, prasinoxanthin, violaxanthin and zeaxanthin. The database is available through PANGAEA (<https://doi.org/10.1594/PANGAEA.793246>; Peloquin et al., 2013b). For this work only measurements of total chlorophyll *a* flagged with high quality were used. The time of day was unavailable and was set to 12:00:00 UTC. These observations were flagged with "1" in the column flag_time. The compiled variable was chla_hplc.

2.2.24 Palmer station Long-Term Ecological Research (PALMER)

PALMER is a monitoring station located in western Antarctic Peninsula. The Palmer station investigates the marine ecology of the Southern Ocean with a focus on the pelagic marine ecosystem, including sea ice habitats, regional oceanography and nesting sites of seabird predators. The PALMER data include measurements of meteorological, oceanographic, sea ice, predators, nutrients and biogeochemistry, pigments, primary production, zooplankton and microbe parameters. This work used the measurements of chlorophyll analysed by HPLC and fluorometry taken at the Palmer station (<https://doi.org/10.6073/pasta/0624c7d161d3b5486d7ba06c2e50ee21>; Schofield et al., 2018a; and <https://doi.org/10.6073/pasta/dea95430a6ad84ecea023ee1ced650d3>; Schofield et al., 2018b) and from the annual cruises off the coast of the western Antarctic Peninsula (<https://doi.org/10.6073/pasta/>

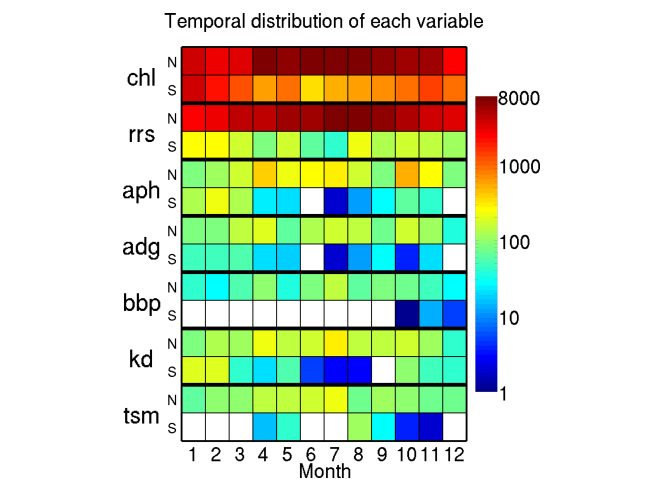


Figure 3. Temporal distribution of chlorophyll *a* concentration (chl), remote-sensing reflectance (rrs), algal pigment absorption coefficient (aph), detrital plus CDOM absorption coefficient (adg), particle backscattering coefficient (bbp), the diffuse attenuation coefficient for downward irradiance (kd) and total suspended matter (tsm) in the final table. All chlorophyll data were considered, but for a given station, HPLC data were selected if available. Colours indicate the number of stations available for each variable, as a function of month and hemisphere of data acquisition (N – Northern Hemisphere; S – Southern Hemisphere). The empty (white) squares indicate no data for that month.

4d583713667a0f52b9d2937a26d0d82e; Schofield et al., 2018c; and <https://doi.org/10.6073/pasta/c479b922d42ace1ce37f9a977e214952>; Schofield et al., 2017). The compiled variables were chla_hplc and chla_fluor.

2.2.25 SeaDataNet archive (SEADATANET)

SeaDataNet is a Pan-European infrastructure for ocean and marine data management. It aims to develop a standardized

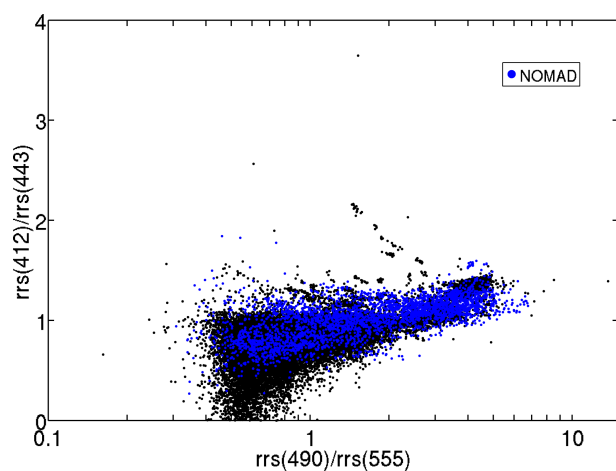


Figure 4. Ranges of remote-sensing reflectance band ratios (412 : 443 and 490 : 555) for all data. The points from the NOMAD dataset are shown in blue for reference. To maximize the number of ratios per dataset a search window up to 12 nm was used, when the four wavelengths (412, 443, 490, 555) were not simultaneously available. The effect of different search windows was negligible in the ratio distribution.

system for managing large and diverse datasets collected by oceanographic cruises and automatic observation systems. For this work, discrete chlorophyll *a* concentration observations with an access restriction set to academic and unrestricted were acquired from the SeaDataNet platform with guidance from the help desk. Only data from the Institute of Marine Research – Norwegian Marine Data Centre (NMD), Norway, which comprised most of the acquired data, were used. All chlorophyll observations were from discrete samples measured by fluorometric, spectrophotometric or HPLC methods, but the exact method was not given. Thus, the observations were marked as `chl_a_fluor`, although some were possibly from HPLC measurements, and were flagged with “1” in the column `flag_chl_a_method`. The compiled variable was `chl_a_fluor`.

2.2.26 Data provided by Trevor Platt and Shubha Sathyendranath (TPSS)

In this work, the TPSS data source refers to a group of observations that were provided to this compilation by Trevor Platt and Shubha Sathyendranath. This is a collection of bio-optical in situ data collected during cruises predominantly in the northwestern Atlantic but also from the Indian Ocean, South Pacific and central Atlantic (see Sathyendranath et al., 2009, for additional details regarding the cruises). It comprises measurements of phytoplankton pigments and algal pigment absorption coefficients. The time of day was unavailable and was set to 12:00:00 UTC. These observations were flagged with “1” in the column `flag_time`. The compiled variables were `chl_a_hplc`, `chl_a_fluor` and `aph`.

2.2.27 Bio-optical data from Tara expeditions (TARA)

The Tara expeditions consist of several cruises around the world, some with durations of several years, designed to study and understand the distribution of planktonic organisms in the world ocean. The discrete observations of remote-sensing reflectance and chlorophyll *a* concentration from HPLC measurements taken during the Tara Oceans (2009–2013) and Mediterranean (2014) expeditions were considered in this work. These data were provided to the ESA OCCI project by Emmanuel Boss and were available in the SeaBASS archive. The remote-sensing reflectances were corrected for the bidirectional nature of the light field (Morel and Gentili, 1996; Morel et al., 2002). The compiled variables were `chl_a_hplc` and `rrs`.

3 Results

In this work several sets of bio-optical in situ data were acquired, homogenized and merged into a single table. The table comprises in situ observations between 1997 and 2018, with a global distribution, and includes the following variables: remote-sensing reflectance (`rrs`), chlorophyll *a* concentration (`chl_a`), algal pigment absorption coefficient (`aph`), detrital and coloured dissolved organic matter absorption (`adg`), particle backscattering coefficient (`bbp`), diffuse attenuation coefficient for downward irradiance (`kd`) and total suspended matter (`tsm`). All observations in the table were processed in such a way that they can be compared directly with satellite-derived ocean-colour data. The table consists of 136 250 rows and 1286 columns. Each row represents a unique station in space and time, separated from the rest by at least 5 min and 200 m. For each observation in a given station, there are three metadata strings: dataset, subdataset and contributor. The columns of the table take the form described in Table 1. The data contributors are indicated in Table 2. Regarding spectral variables, all original wavelengths were preserved, which requires a large number of unique wavelengths to be maintained in the database. No band shifting was performed (though some archived data in some data sources may have been merged with nearby wavelengths) and no minimum number of wavelengths per observation was imposed. This allows further manipulation of the table for different purposes. In the following paragraphs, the table is analysed and the final group of observations is described for each contributing dataset; however, the numbers reported here do not reflect the original numbers in each dataset, since duplicates across contributing datasets were removed (e.g. NOMAD and others were removed from MERMAID).

Observations of remote-sensing reflectance are available at 611 unique wavelengths (i.e. columns), between 404.7 and 1022.1 nm (Fig. 1). In total there are 59 781 observations (i.e. rows) with remote-sensing reflectance in the table. The total number of observations are partitioned per contributing datasets as follows: AERONET-OC (31 574), BOUS-

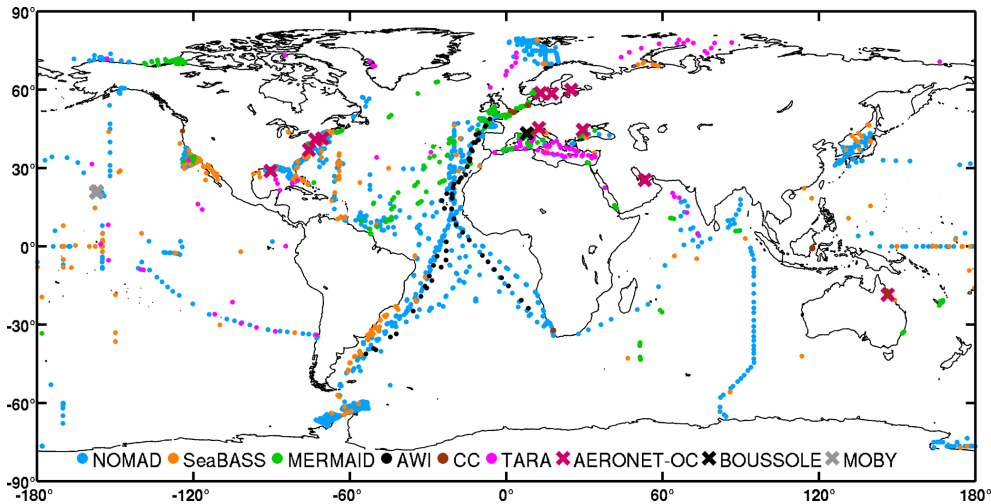


Figure 5. Global distribution of remote-sensing reflectance per dataset in the final table. The data sources are identified with different colours. Points show locations where at least one observation is available. Crosses show sites from which time series data of remote-sensing reflectance are available.

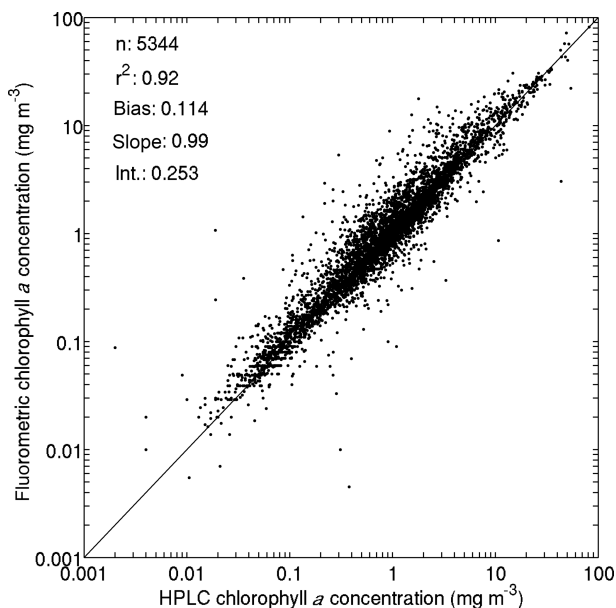


Figure 6. Comparison of coincident observations of chlorophyll *a* concentration derived with different methods (chla_fluor and chla_hplc). The data were transformed prior to regression analysis to account for their log-normal distribution.

SOLE (17 364), MOBY (5466), NOMAD (3326), MERMAID (885), SeaBASS (698), AWI (54), COASTCOLOUR (307) and TARA (107). Data from AERONET-OC, BOUSSOLE and MOBY correspond to continuous time series, and, hence, the higher number of observations. Data distribution at 44X and 55X nm is provided in Fig. 2a and b, respectively. Data were first searched for at 445 and 555 nm and then with a search window up to 8 nm to in-

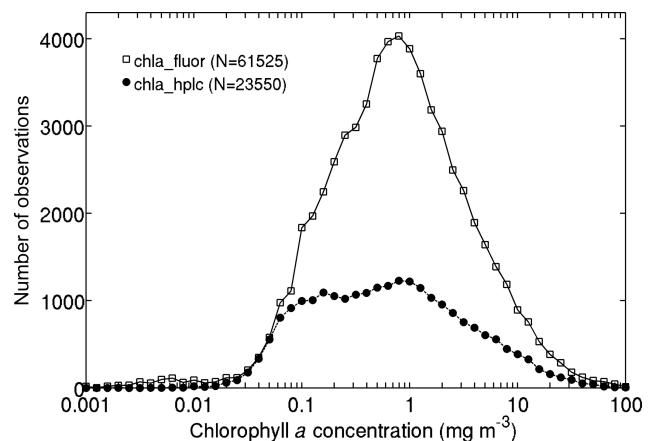


Figure 7. Number of observations per chlorophyll *a* concentration acquired with different methods (chla_fluor and chla_hplc).

clude also data at 547 nm. Median values at 44X nm range from 0.003 m^{-1} (AERONET-OC) and 0.009 m^{-1} (MOBY), whereas at 55X nm the median values lie between 0.001 m^{-1} (AWI) and 0.007 m^{-1} (COASTCOLOUR). The observations are unevenly distributed between each month of the year in both hemispheres, with a higher coverage in summer months (Fig. 3). There are fewer data in the Southern Hemisphere than in the Northern Hemisphere (Fig. 3). For additional analysis, rrs band ratios were plotted against each other (490:555 versus 412:443, Fig. 4). Most points are within the boundaries of the NOMAD dataset, but some scattered points were found. These points were retained in the table to allow further manipulation with different quality control criteria. Complementary analysis of remote-sensing reflectance data is made when other variables are concurrently avail-

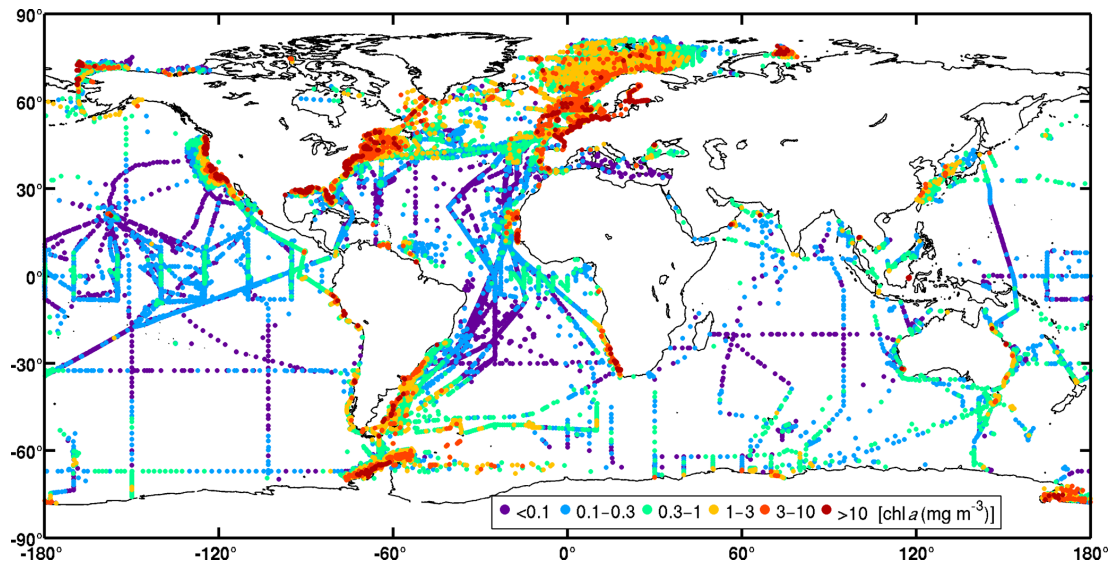


Figure 8. Global distribution of chlorophyll *a* concentration per interval of the observed value. All chlorophyll data were considered, but for a given station, HPLC data were selected if available.

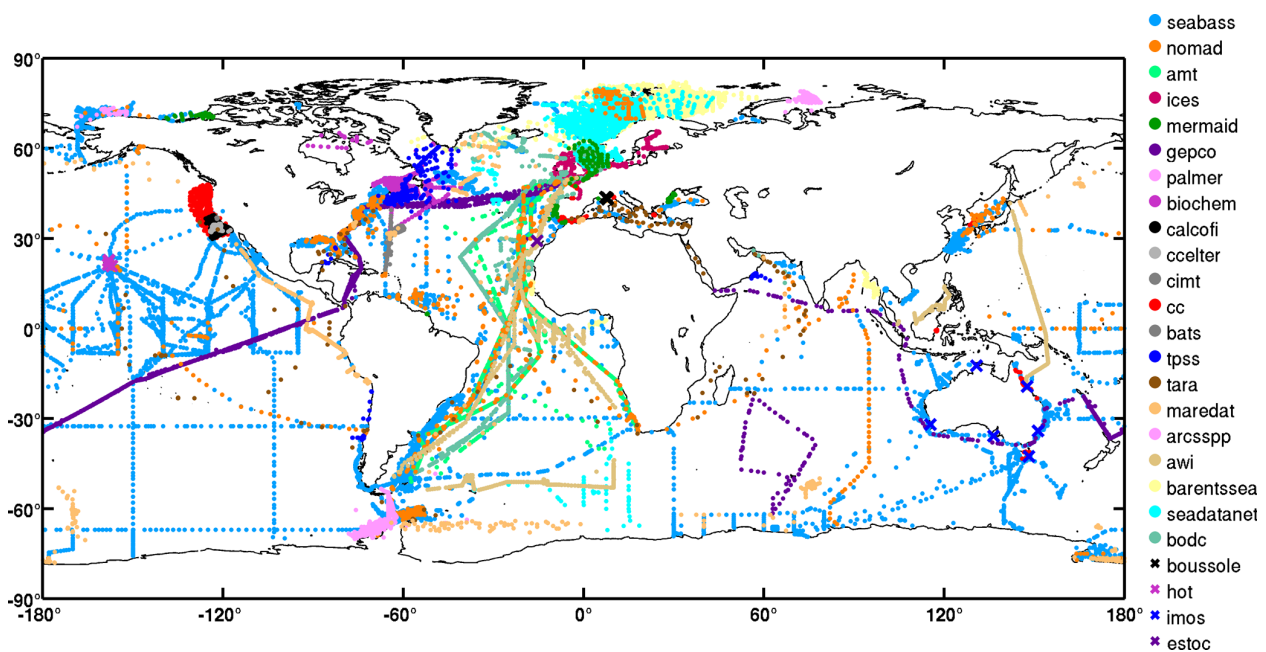


Figure 9. Global distribution of chlorophyll *a* concentration per dataset in the final table. All chlorophyll data were considered, but for a given station, HPLC data were selected if available. Crosses show sites from where data of chlorophyll are available in a specific geographic location.

able and discussed below (see Figs. 11 and 16). The geographic distribution of remote-sensing reflectance observations (Fig. 5) shows a higher number of observations in some coastal regions, such as those of North America and northern Europe. The central regions of the ocean show a lower number of observations, with the Atlantic Ocean having the highest density in relation to the other oceans. The best geographic coverage is provided by the NOMAD database. Data

from SeaBASS are fewer in number but are still important. Data from MERMAID are mainly located along the coasts of Europe, North America and the central region of the North Atlantic Ocean. The observations from COASTCOLOUR are concentrated in 17 coastal sites around the world, while AWI data are available for the Atlantic, Pacific and Southern Ocean. TARA data are spread across several regions, with the highest data density in the Mediterranean Sea.

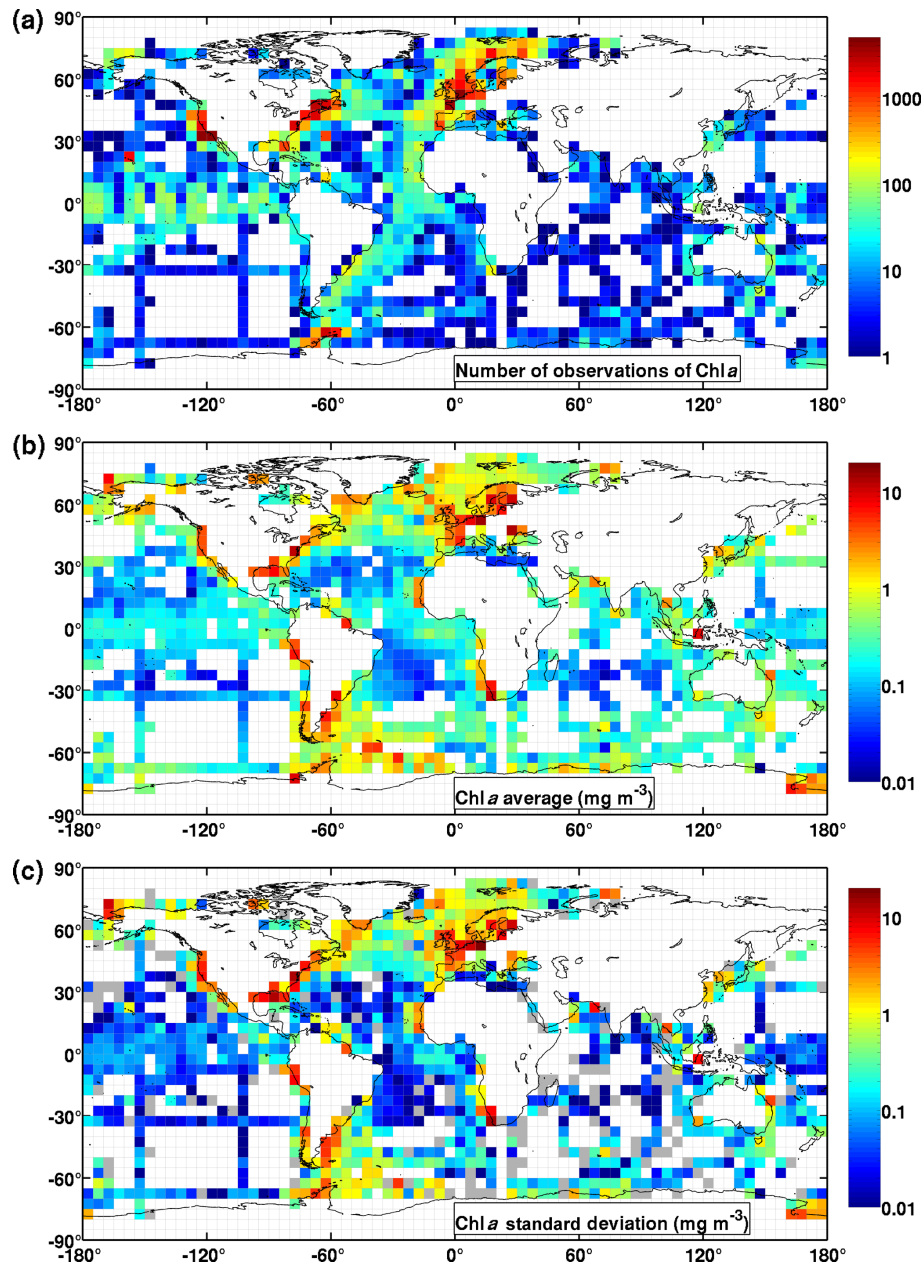


Figure 10. The chlorophyll *a* (mg m^{-3}) data partitioned into $5^\circ \times 5^\circ$ boxes showing (a) number of observations, (b) average value and (c) standard deviation in each box. All chlorophyll data were considered, but for a given station, HPLC data were selected if available. In the standard deviation plot, grey colour boxes represent zero standard deviation (i.e. one observation).

For chlorophyll *a* concentration, two types of observations were compiled, one measured by fluorometric or spectrophotometric methods (chla_fluor) and the other measured by HPLC methods (chla_hplc). A comparison of both measurements (Fig. 6), when available at the same station, shows good agreement (Trees et al., 1985). As stated before, the analysis was done on the final merged table; thus no data were filtered and the good relation can be explained in part by the quality control implemented by the data providers and curators of repositories such as NO-

MAD and SeaBASS (Werdell and Bailey, 2005). The total number of rows with concurrent chla_fluor and chla_hplc is 5344, with contributions from SeaBASS (39%), TPSS (18%), NOMAD (13%), PALMER (9%), BATS (6%), COASTCOLOUR (5%), MERMAID (4%), HOT (4%), and AMT+GeP&CO+BODC+CCELTER+CALCOFI (2%). The chla_fluor observations are available in 61 525 stations (rows), with values ranging from 0.001 to 100 mg m^{-3} (Fig. 7). They are from NOMAD (2350), SeaBASS (18 122), MERMAID (3711), ICES (5421), HOT (702),

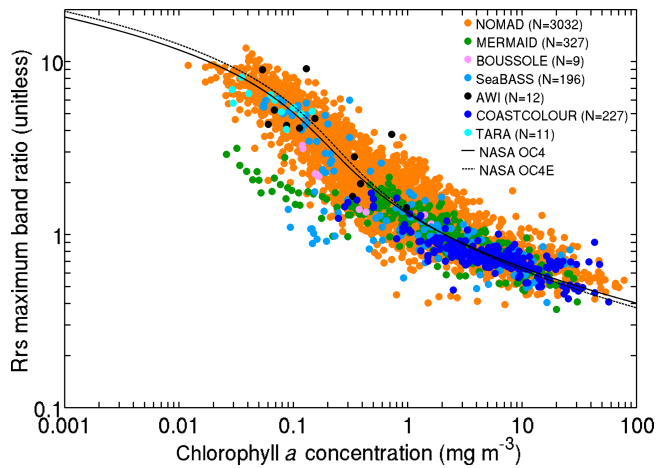


Figure 11. A remote-sensing reflectance maximum band ratio (as defined in text) $[\lambda_{443,490,510}] / 555$ or $[\lambda_{443,490,510}] / 560$ if 555 not available) as a function of chlorophyll *a* concentration. All chlorophyll data were considered, but for a given station, HPLC data were selected if available. Data within 2 nm of the wavelengths were used. For reference, the solid and dotted lines show the NASA OC4 and OC4E v6 standard algorithms, respectively (https://oceancolor.gsfc.nasa.gov/atbd/chlor_a/, last access: 10 July 2019). The total number of points was 3814, of which 79 % were from NOMAD.

AMT (164), ARCSPP (189), BARENTSSEA (7188), BATS (356), BIOCHEM (4592), BODC (895), CALCOFI (4631), COASTCOLOUR (3322), CCELTAR (254), CIMT (204), ESTOC (100), GEPCO (56), PALMER (2865), SEADATANET (5403) and TPSS (1000). The total number of *chl_a_hplc* observations is 23 550, ranging from 0.002 to 99.8 mg m⁻³ (Fig. 7), with contributions from NOMAD (1309), SeaBASS (9478), MERMAID (707), ICES (2994), HOT (193), GeP&CO (1536), BOUSSOLE (397), AMT (902), AWI (750), BATS (334), BODC (735), COASTCOLOUR (848), IMOS (103), MAREDAT (1024), PALMER (1077), TPSS (1002) and TARA (161). The combined chlorophyll dataset (all chlorophyll data considered, but for a given station, HPLC data were selected if available) has a total of 79 731 observations, with 10 %, 49 % and 41 % respectively from oligotrophic (< 0.1 mg m⁻³), mesotrophic (0.1–1 mg m⁻³) and eutrophic (> 1 mg m⁻³) waters. When compared with the proportions of the world ocean in these trophic classes, 56 % oligotrophic, 42 % mesotrophic and 2 % eutrophic (Antoine et al., 1996), oligotrophic waters are underrepresented relative to eutrophic waters in the compilation. The combined chlorophyll dataset is unevenly distributed between each month of the year in both the Northern and Southern Hemisphere, with higher coverage in summer months (Fig. 3). There are fewer data in the Southern Hemisphere than in the Northern Hemisphere (Fig. 3). The spatial distribution of the chlorophyll values for the combined dataset (Fig. 8) shows a good agreement

with known biogeographical features, such as lower chlorophyll values in the subtropical gyres and higher values in temperate, coastal and upwelling regions. Many regions show a good spatial coverage (e.g. Atlantic and Pacific Ocean), while others are less well sampled (e.g. Southern and Indian Ocean). Of the contributing datasets, NOMAD and SeaBASS provide a good spatial coverage in many regions (Fig. 9). Other datasets also provide coverage from several locations across the globe (GEPCO, MAREDAT, TARA). The ICES, MERMAID and BODC data are mainly located along the coastal regions of Europe. The AMT and many AWI data mainly cover the central part of the Atlantic Ocean, other AWI data cover the Atlantic sector and the Amundsen to Bellingshausen Sea of the Southern Ocean and the western subtropical and tropical Pacific. The SEADATANET, ARCSPP and BARENTSSEA provide coverage for the Arctic region and northern seas of the North Atlantic. The observations from BIOCHEM and TPSS are mostly from the northwestern Atlantic, while CALCOFI, CCELTAR and CIMT provide data for the western coast of North America. The remaining datasets provide observations for fixed locations: PALMER (western Antarctic Peninsula), COASTCOLOUR (17 coastal sites across the world), BATS (Bermuda, North Atlantic), BOUSSOLE (Mediterranean), HOT (Hawaii, North Pacific), IMOS (coastal sites around Australia) and ESTOC (Canaries, North Atlantic). Figure 9 shows all data sources that contribute with chlorophyll observations, but many overlap each other, especially around Europe and North America. For additional analysis and as an example of the applications of the compiled dataset, the combined chlorophyll data (*chl_a_fluor* and *chl_a_hplc*) were partitioned into 5° × 5° boxes, and for each box the number of observations, average value and standard deviation were computed (Fig. 10a, b and c, respectively). The number of observations can be very high (> 1000) in some boxes along the European and North American coastlines and relatively low (< 20) in oceanic regions. Again, there is evidence in the average value map (Fig. 10b) of well-known biogeographical features, such as the lower chlorophyll in the subtropical gyres and higher values in coastal and upwelling areas. There is a close correspondence between the spatial patterns of the average and standard deviation maps (Fig. 10b and c), which may be an indicator of the data quality.

Coincident observations of chlorophyll *a* concentration and remote-sensing reflectance are available at 3814 stations. These observations are mostly from NOMAD (79 %), MERMAID (9 %), COASTCOLOUR (6 %), and SeaBASS (5 %). The maximum of three selected band ratios of remote-sensing reflectance is plotted against chlorophyll *a* concentration (Fig. 11). The *chl_a* values used are the combined HPLC and fluorometric chlorophyll *a*, and for the *rrs*, the closest spectral observation within 2 nm was used. The maximum band ratios were calculated as the maximum of $[\text{rrs}(443)] / \text{rrs}(555)$, $\text{rrs}(490) / \text{rrs}(555)$,

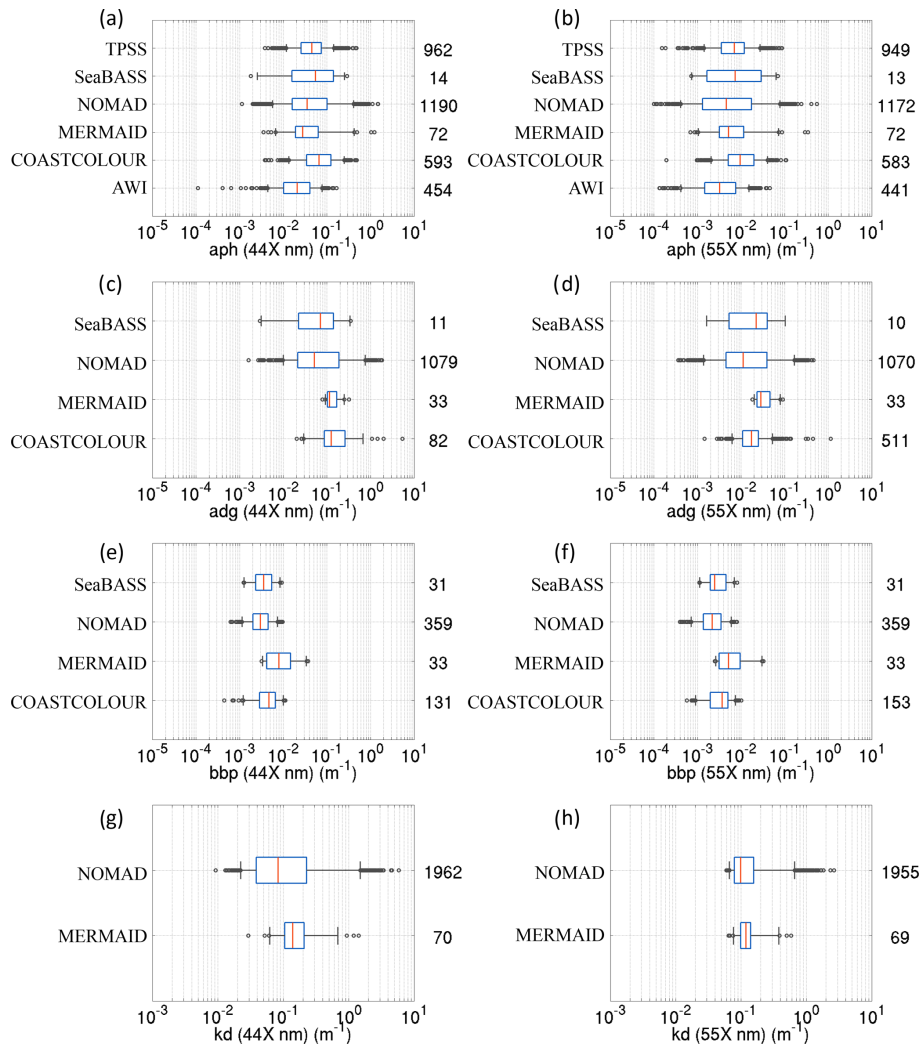


Figure 12. The distribution of (a) aph at 44X nm, (b) aph at 55X nm, (c) adg at 44X nm, (d) adg at 55X nm, (e) bbp at 44X nm, (f) bbp at 55X nm, (g) kd at 44X nm, and (h) kd at 55X nm. Data were first searched for at 445 and 555 nm and then with a search window up to 8 nm to include data at 547 nm. The graphical convention is identical to Fig. 2.

$\text{rrs}(510) / \text{rrs}(555)$ or $[\text{rrs}(443) / \text{rrs}(560), \text{rrs}(490) / \text{rrs}(560), \text{rrs}(510) / \text{rrs}(560)]$ if $\text{rrs}(555)$ was not available. The relationship between maximum band ratio and chlorophyll is close to the NASA OC4 and OC4E v6 standard algorithm (https://oceancolor.gsfc.nasa.gov/atbd/chlor_a/) similarly based on maximum band ratios, providing confidence in the quality of the compiled data.

The inherent optical properties (aph, adg and bbp) are available at 550 unique wavelengths between 300 and 850 nm. There is a total of 3293, 1654 and 792 observations, for aph, adg and bbp, respectively. For aph the total number of observations is distributed among NOMAD (1190), TPSS (966), COASTCOLOUR (593), AWI (458), SeaBASS (14) and MERMAID (72). For adg the contributions are as follows: NOMAD (1079), COASTCOLOUR (531), SeaBASS (11) and MERMAID (33). The bbp ob-

servations come from NOMAD (371), COASTCOLOUR (154), SeaBASS (32) and MERMAID (235). The data distribution of aph, adg and bbp at 44X nm and 55X nm for each dataset is provided in Fig. 12a–f. Median values of aph, adg and bbp at 44X and 55X nm for each dataset are summarized in Table 3. For additional analysis, the following band ratios for the absorption coefficients were calculated: $\text{aph}(490) / \text{aph}(443)$, $\text{aph}(412) / \text{aph}(443)$, $\text{adg}(443) / \text{adg}(490)$ and $\text{adg}(412) / \text{adg}(443)$. Data within 2 nm of the wavelengths were used to maximize the number of points. The distribution of the ratios is shown in Fig. 13. Several observations were found to be outside the thresholds used in the IOCCG report 5 (2006) for quality control (see dotted vertical black lines in Fig. 13). These points are highlighted here for information but retained in the database, as these were mostly from NOMAD and there was an inter-

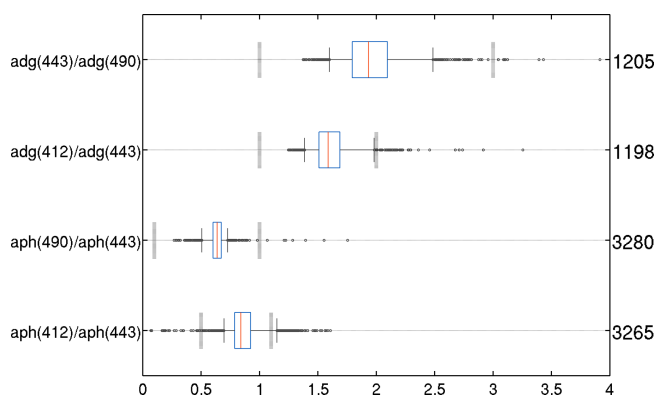


Figure 13. The distribution of absorption coefficients band ratios: $\text{adg}(443) / \text{adg}(490)$, $\text{adg}(412) / \text{adg}(443)$, $\text{aph}(490) / \text{aph}(443)$ and $\text{aph}(412) / \text{aph}(443)$. Data within 2 nm of the wavelengths were used. The graphical convention is identical to Fig. 2. The vertical dashed lines show the lower and upper thresholds used for quality control in the IOCCG report 5. The total number of points for adg ratios are divided between NOMAD (89 %), COASTCOLOUR (7 %), MERMAID (3 %) and SeaBASS (1 %). The total number of points for aph ratios are divided between NOMAD (36 %), TPSS (29 %), COASTCOLOUR (18 %), AWI (14 %), MERMAID (2 %) and SeaBASS (1 %).

est to preserve this dataset as a whole. Also, not discarding these data allows further manipulation with different quality control criteria. On the annual scale, the observations of the inherent optical properties are strongly underrepresented in the Southern Hemisphere where there is a complete absence of data in several months of the year (Fig. 3). Overall, the geographic coverage for observations of aph, adg and bbp (Fig. 14) is poor, with most open ocean regions not being sampled, except for the Atlantic Ocean. Small clusters of data are located in particular coastal regions.

Finally, for the diffuse attenuation coefficient for downward irradiance (kd) there are 25 unique wavelengths between 405 and 709 nm. There is a total of 2454 observations from NOMAD (2266), SeaBASS (118) and MERMAID (70). Data distribution of kd at 44X and 55X nm for each dataset is shown in Fig. 12g and h. No kd data at these wavelengths were available for the SeaBASS dataset (only at 490 nm). Median values of kd at 44X nm span between 0.08 m^{-1} (NOMAD) and 0.1 m^{-1} (MERMAID), whereas at 55X nm the kd values are approximately 0.1 m^{-1} (NOMAD and MERMAID). NOMAD provides the best geographical coverage (Fig. 15), with a higher coverage in the Atlantic, compared with other oceans. With the exception of the coastal regions of North America and the Sea of Japan, most coastal regions are not sampled. In the Northern Hemisphere, kd is distributed roughly evenly across all months of the year, but in the Southern Hemisphere there are few data points during the austral winter and none at all in September (Fig. 3). For total suspended matter (tsm) there is a total of 1546 observations divided between COASTCOLOUR

(1199) and MERMAID (347). The observations of tsm are available in a greater number in the Northern Hemisphere (Fig. 3) and are distributed across several coastal regions around Europe, the Mediterranean Sea, the South China Sea, Indonesia and Australia (Fig. 15).

Although most of the stations with concurrent variables are from the NOMAD dataset, for completeness, an examination of bio-optical relationships is provided (Fig. 16). The relation between aph at 443 nm and chlorophyll *a* (Fig. 16 a) agrees with Bricaud et al. (2004). A total of 2953 points exist with these two variables available (34 % from NOMAD, 32 % from TPSS, 11 % from AWI, 11% from COASTCOLOUR, and the remaining 12 % from MERMAID and SeaBASS). The relation between the sum of aph and adg at 443 nm and rrs at 443 nm (Fig. 16 b) shows a similar dispersion, with the exception of some scattered points, to an equivalent analysis on the IOCCG report 5 (see their Fig. 2.3). Again, the scattered data were retained in the final table to preserve the NOMAD dataset. A total of 1112 points exist for which these three variables are available (97 % from NOMAD). The relation between the ratio $\text{rrs}(490) / \text{rrs}(555)$ and $\text{kd}(490)$ (Fig. 16c) shows a good agreement with the NASA KD2S standard algorithm (https://oceancolor.gsfc.nasa.gov/atbd/kd_490/). A total of 2280 points exist for which these three variables are available (93 % from NOMAD). The relation between the ratio $\text{rrs}(490) / \text{rrs}(555)$ and bbp at 555 nm (Fig. 16 c) shows a good agreement with the relation suggested by Tiwari and Shanmugam (2013). A total of 365 points exist for which these three variables are available (89 % from NOMAD).

4 Data availability

Information about the data availability can be found in Appendix B.

5 Conclusions

In this work, a compilation of bio-optical in situ data is presented, resulting from the acquisition, homogenization and integration of several sets of data obtained from different sources. The compiled data have a global coverage and span the period from 1997 to 2018. Minimal changes were made to the original data, other than the ones occurring from conversion to standard format and quality control. In situ measurements of the following variables were compiled: remote-sensing reflectance, chlorophyll *a* concentration, algal pigment absorption coefficient, detrital and coloured dissolved organic matter absorption coefficient, particle backscattering coefficient, diffuse attenuation coefficient for downward irradiance and total suspended matter.

The final set of data consists of a substantial number of in situ observations, available in a simple text table and processed in a way that could be used directly for the evaluation

Table 3. Summary of median values for aph, adg and bbp at 44X and 55X nm for each dataset (as shown in Fig. 12a–f). Data were first searched for at 445 and 555 nm and then with a search window up to 8 nm to include data at 547 nm.

	Median aph		Median adg		Median bbp	
	44x nm	55x nm	44x nm	55x nm	44x nm	55x nm
SeaBASS	0.0549	0.0074	0.0711	0.0222	0.0035	0.0025
MERMAID	0.0282	0.0052	0.1149	0.0286	0.0080	0.0052
NOMAD	0.0353	0.0046	0.0515	0.0112	0.0030	0.0022
COASTCOLOUR	0.0665	0.0096	0.1259	0.0175	0.0047	0.0037
AWI	0.0208	0.0032	–	–	–	–
TPSS	0.0454	0.0071	–	–	–	–

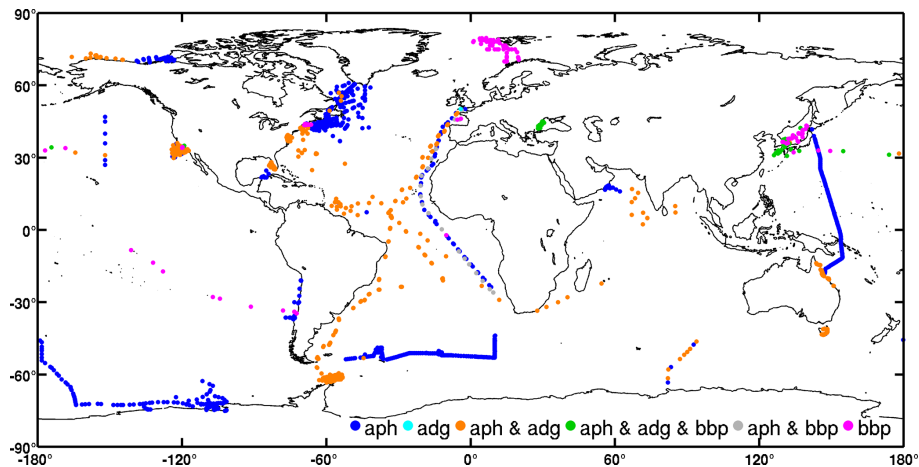


Figure 14. Global distribution of observations of inherent optical properties (algal pigment absorption coefficient aph, detrital plus CDOM absorption coefficient adg, and particle backscattering coefficient bbp) in the final table.

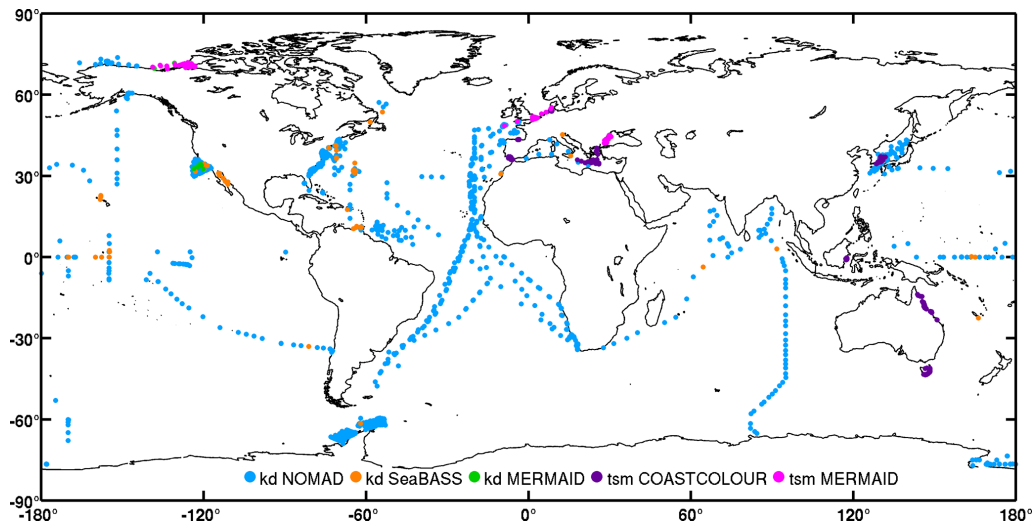


Figure 15. Global distribution of diffuse attenuation coefficient for downward irradiance (kd) and total suspended matter (tsm) per dataset in the final table. The tsm and kd points from MERMAID overlap each other in the western Black Sea ($\sim 40^\circ$ N, 30° E) and the Arctic ($\sim 70^\circ$ N, 120° W).

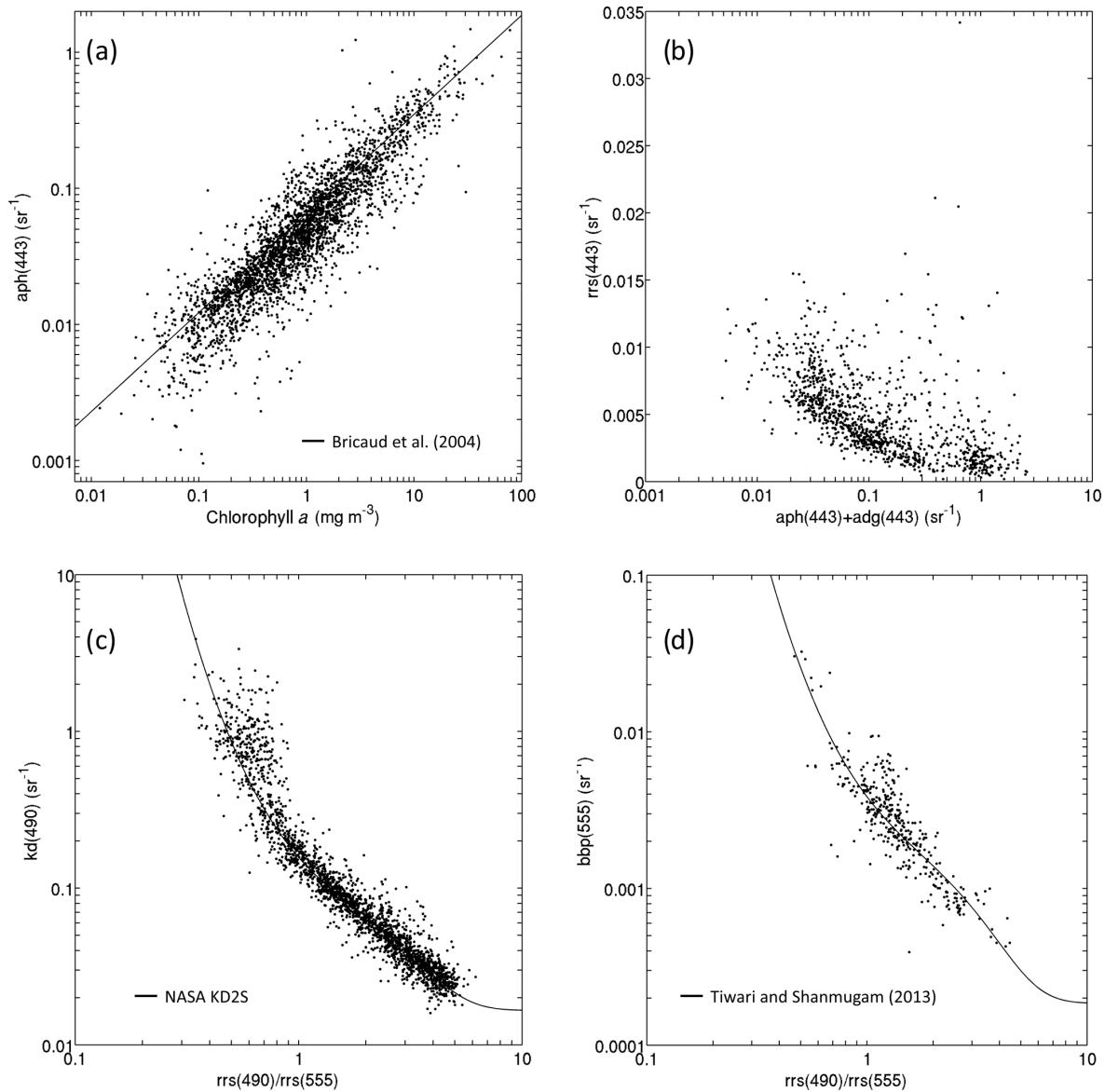


Figure 16. Examples of bio-optical relationships in the final merged table: **(a)** $\text{aph}(443)$ versus chlorophyll a . The total number of points (2953) is divided between AWI (334), COASTCOLOUR (335), MERMAID (214), NOMAD (991), SeaBASS (124) and TPSS (955). For reference the solid line shows the regression from Bricaud et al. (2004). **(b)** $[\text{aph}(443) + \text{adg}(443)]$ versus $\text{rrs}(443)$. The total number of points (1112) is divided between MERMAID (33) and NOMAD (1079). **(c)** $[\text{rrs}(490) / \text{rrs}(555)]$ versus $\text{kd}(490)$. The total number of points (2280) is divided between MERMAID (62), NOMAD (2117) and SeaBASS (101). For reference the solid line shows the NASA KD2S standard algorithm (https://oceancolor.gsfc.nasa.gov/atbd/kd_490/, last access: 10 July 2019). **(d)** $[\text{rrs}(490) / \text{rrs}(555)]$ versus $\text{bbp}(555)$. The total number of points (365) is divided between MERMAID (33), NOMAD (324), and COASTCOLOUR+SeaBASS (4). For reference the solid line shows the relation proposed by Tiwari and Shanmugam (2013). A search window of 2 nm was used for panels **(a)** and **(b)**, and a search window of 5 nm was used for panels **(c)** and **(d)** to include data at 560 nm when not available at 555 nm.

of satellite-derived ocean-colour data. The major advantages of this compilation are that it merges six commonly used data sources in ocean-colour validation (MOBY, BOUSSOLE, AERONET-OC, SeaBASS, NOMAD and MERMAID), four data sources developed for ocean-colour applications (AWI, COASTCOLOUR, TPSS and TARA) and 17 additional sets of chlorophyll a concentration data (AMT,

ICES, HOT, GeP&CO, ARCSPP, BARENTSSEA, BATS, BIOCHEM, BODC, CALCOFI, CCELTER, CIMT, ESTOC, IMOS, MAREDAT, PALMER and SEADATANET) into a simple text table free of duplicated observations. This compilation was initially created with the intention of evaluating the quality of the satellite ocean-colour products from the ESA OC-CCI project, but it can also be used for other

purposes, including the validation of retrievals from recent space-borne sensors such as Landsat 8 and Sentinel-2 and 3. It may also be useful in the preparation of future sensors like NASA PACE. The objective of publishing the compilation is to make it easily accessible to the broader community.

Note on former version

A former version of this article was published on 3 June 2016 and is available at <https://doi.org/10.5194/essd-8-235-2016>.

Appendix A: Notation

ad	Detrital absorption coefficient (m^{-1})	ESTOC	Estación Europea de Series Temporales del Océano
adg	Detrital plus CDOM absorption coefficient (m^{-1})	Fo	Top-of-the-atmosphere solar irradiance ($\text{mW cm}^{-2} \mu\text{m}^{-1}$)
AERONET-OC	AERosol RObotic NETwork-Ocean Color	GeP&CO	Geochemistry, Phytoplankton, and Color of the Ocean
ag	CDOM absorption coefficient (m^{-1})	HOT	Hawaii Ocean Time-series
AMT	Atlantic Meridional Transect	HPLC	High-performance liquid chromatography
ap	Particle absorption coefficient (m^{-1})	ICES	International Council for the Exploration of the Sea
aph	Algal pigment absorption coefficient (m^{-1})	IMOS	Integrated Marine Observing System
ARCSSPP	Arctic System Science Primary Production	kd	Diffuse attenuation coefficient for downward irradiance (m^{-1})
AWI	Data collection from Astrid Bracher	Lw	Water-leaving radiance (or above-water upwelling radiance) ($\text{mW cm}^{-2} \mu\text{m}^{-1} \text{sr}^{-1}$)
aw	Pure water absorption coefficient (m^{-1})	MAREDAT	Compilation of data in several coastal sites
BARENTSSEA	Data collection from Knut Yngve Børshheim	MERIS	Medium Resolution Imaging Spectrometer
BATS	Bermuda Atlantic Time-series Study	MERMAID	MERIS Match-up In situ Database
bb	Total backscattering coefficient (m^{-1})	MOBY	Marine Optical Buoy
bbp	Particle backscattering coefficient (m^{-1})	MODIS	Moderate Resolution Imaging Spectroradiometer
bbw	Backscattering coefficient of seawater (m^{-1})	NASA	National Aeronautics and Space Administration
BIOCHEM	The Fisheries and Oceans Canada database for biological and chemical data	nLw	Normalized water-leaving radiance ($\text{mW cm}^{-2} \mu\text{m}^{-1} \text{sr}^{-1}$)
BODC	British Oceanographic Data Centre	nLw_ex	nLw with a correction for bidirectional effects ($\text{mW cm}^{-2} \mu\text{m}^{-1} \text{sr}^{-1}$)
BOUSSOLE	Bouée pour l'acquisition d'une Série Optique à Long Terme	NOMAD	NASA bio-Optical Marine Algorithm Dataset
CALCOFI	California Cooperative Oceanic Fisheries Investigations	OC-CCI	Ocean Colour Climate Change Initiative
CCELER	California Current Ecosystem Long Term Ecological Research	OLCI	Ocean and Land Colour Instrument
CDOM	Coloured Dissolved Organic Matter	PALMER	Palmer station Long-Term Ecological Research
chl _a	Chlorophyll <i>a</i> concentration (mg m^{-3})	rrs	Remote-sensing reflectance (sr^{-1})
chl _a _fluor	Chlorophyll <i>a</i> concentration determined from fluorometric or spectrophotometric methods (mg m^{-3})	Rw	Irradiance reflectance (dimensionless)
chl _a _hplc	Total chlorophyll <i>a</i> concentration determined from the HPLC method (mg m^{-3})	SeaBASS	SeaWiFS Bio-optical Archive and Storage System
CIMT	Center for Integrated Marine Technology	SEADATANET	Archive of in situ marine data
COASTCOLOUR	Compilation of data in several coastal sites	SeaWiFS	Sea-viewing Wide Field-of-view Sensor
Es	Surface irradiance (or above-water downwelling irradiance) ($\text{mW cm}^{-2} \mu\text{m}^{-1}$)	TARA	Data collection from global transects
ESA	European Space Agency	TPSS	Data collection from Trevor Platt and Shubha Sathyendranath
		VIIRS	Visible Infrared Imaging Radiometer Suite

Appendix B: Data availability

The compiled data are available at <https://doi.org/10.1594/PANGAEA.898188> (Valente et al., 2019). The database is composed of three main tables: table `insitodb_chla.csv` with the observations of `chla_fluor` and `chla_hplc`, table `insitodb_rrs.csv` with observations of `rrs` and table `insitodb_iopskdtsm.csv` with remaining observations (`aph`, `adg`, `bbp`, `kd` and `tsm`). The rows within the three tables relate to each other via a unique key (column `idx`). The three tables can be viewed conceptually as one table with all data. To help with data manipulation, six auxiliary tables derived from the previous three main tables are provided. The table `insitodb_metadata.csv` contains all available metadata and helps, for example, to find rows (i.e. `idx`) with multiple variables (e.g. `rrs` and `chla_fluor`). The table `auxiliary_table_contributors.csv` contains the number of observations per data contributor, variable and dataset. The remaining four tables (`insitodb_rrs_satbands2.csv`, `insitodb_rrs_satbands6.csv`, `insitodb_iopskdtsm_satbands2.csv` and `insitodb_iopskdtsm_satbands6.csv`) contain the spectral data of the main tables (i.e. `insitodb_rrs.csv` and `insitodb_iopskdtsm.csv`) aggregated within ± 2 and ± 6 nm, respectively, of SeaWiFS, MODIS AQUA, MERIS, VIIRS and OLCI sensor bands. The tables are generated by assigning, in each row of the main tables (i.e. `insitodb_rrs.csv` and `insitodb_iopskdtsm.csv`), the closest spectral observation within 2 nm (or 6 nm) of a sensor band. The centre wavelengths of each band and sensor used in the generation of the files are the following: SeaWiFS bands 1–8 were centred at [412, 443, 490, 510, 555, 670, 765, 865] nm, respectively; MODIS-AQUA bands 1–9 were centred at [412, 443, 488, 531, 547, 667, 678, 748, 869] nm, respectively; MERIS bands 1–13 were centred at [412, 442, 490, 510, 560, 620, 665, 681, 709, 753, 779, 865, 885] nm, respectively; VIIRS bands 1–5 were centred at [410, 443, 486, 551, 671] nm, respectively; OLCI bands 1–7 were centred at [412, 442, 490, 510, 560, 620, 665] nm. An exception to this procedure was made to confirm that the correct MOBY data are stored in the files (see Sect. 2.2.1. for discussion on how MOBY wavelengths are stored in the main file). Finally, a `readme` file is provided to help the user. Table B1 shows how the compiled data look. The example of a query for available chlorophyll data from subdataset `seabass_car81` is given.

Table B1. Example of how the compiled data look. The result if the compilation is queried for the chlorophyll data from subdataset `seabass_car81` is shown.

<code>idx</code>	<code>time</code>	<code>lat</code>	<code>long</code>	<code>chla_fluor</code>	<code>chla_fluor_dataset</code>	<code>chla_fluor_subdataset</code>	<code>chla_fluor_contributor</code>
30266	2002-08-06T09:02:00Z	10.5	-64.67	0.185	<code>seabass</code>	<code>seabass_car81</code>	Frank Muller-Karger

Supplement. The supplement related to this article is available online at: <https://doi.org/10.5194/essd-11-1037-2019-supplement>.

Author contributions. AV compiled the database, carried out the integration and quality checking, and drafted the manuscript. The first six authors are part of the ESA OC-CCI team and contributed to the design of the compilation and to the quality checking, as well as contributing data. The remaining authors are listed alphabetically and are data contributors (see their respective dataset in Table 2) or individuals responsible for the development of a particular dataset (e.g. JW for NOMAD and KB for MERMAID). All data contributors (listed in Table 2) were contacted for authorization of data publishing and offered co-authorship. In the case of the ICES dataset the permission for publishing was given by the ICES team. All the authors have critically reviewed the manuscript. MW and TM passed away before submission. We regard their approval of this work as implicit.

Competing interests. The authors declare that they have no conflict of interest.

Acknowledgements. This paper is a contribution to the ESA OC-CCI project. This work is also a contribution to project PEst-OE/MAR/UI0199/2014. We would like to thank the efforts of the teams responsible for collection of the data in the field and of the teams responsible for processing and storing the data in archives, without which this work would not be possible. We thank Tamoghna Acharyya and Robert Brewin at Plymouth Marine Laboratory for their initial contribution to this work. We thank the NOAA (US) for making available the MOBY data and Yong Sung Kim for the help in questions about MOBY data. BOUSSOLE is supported and funded by the European Space Agency (ESA), the Centre National d'Etudes Spatiales (CNES), the Centre National de la Recherche Scientifique (CNRS), the Institut National des Sciences de l'Univers (INSU), the Sorbonne Université (SU) and the Institut de la Mer de Villefranche (IMEV). We thank ACRI-ST, ARGANS and ESA for access to the MERMAID database (<http://hermes.acri.fr/mermaid>, last access: 10 July 2019). We thank Annelies Hommersom, Pierre Yves Deschamps, Gavin Tilstone and David Siegel for allowing the use of MERMAID data for which they are principal investigators. We thank the British Oceanographic Data Centre (BODC) for access to AMT data and in particular to Polly Hadziabdic and Rob Thomas for their help in questions about the AMT dataset. We thank Victoria Hill, Patrick Holligan, Gerald Moore and Emilio Suarez for the use of AMT data for which they are principal investigators. We thank Sam Ahmed, Hui Feng, Alex Gilerson and Brent Holben for allowing the use of the AERONET-OC data for which they are principal investigators. We thank also the AERONET staff and site support people. The Australian Integrated Marine Observing System (IMOS) and CSIRO are acknowledged for funding the Lucinda AERONET-OC site. We thank Bob Bidigare, Matthew Church, Ricardo Letelier and Jasmine Nahorniak for making the HOT data available, as well as the National Science Foundation for support of the HOT research (grant OCE 09-26766). We thank Yves Dandonneau for allowing the use of GeP&CO data. We thank the ICES database

on the marine environment (Copenhagen, Denmark, 2014) for allowing the use of their archived data and Marilyn Sørensen for the help with questions about the ICES dataset. We thank all ICES contributors for their data. We thank Eric Zettler and Sea Education Association. The CARIACO Ocean Time-Series Program also provided significant decade-long bio-optical information used in this study. These data were obtained from NOMAD and SeaBASS. We thank NASA, SeaBASS and the Ocean Biology Processing Group (OBPG) for access to SeaBASS and NOMAD data. We thank NASA for project funding for data collection. We thank Chris Proctor from SeaBASS for his valuable and prompt help in a variety of questions. We are deeply thankful to the data contributors of NOMAD and SeaBASS: Kevin Arrigo, Mike Behrenfeld, Emmanuel Boss, Chris Brown, Mary Luz Canon, Douglas Capone, Ken Carder, Alex Chekalyuk, Jay-Chung Chen, Dennis Clark, Jorge Corredor, Glenn Cota, Yves Dandonneau, Heidi Dierssen, David Eslinger, Piotr Flatau, Alex Gilerson, Joaquim Goes, Gwo-Ching Gong, Adriana Gonzalez-Silvera, Larry Harding, Jon Hare, Chuanmin Hu, Sung-Ho Kang, Gary Kirkpatrick, Oleg Kopelevich, Sam Laney, Pierre Larouche, Zhongping Lee, Ricardo Letelier, Marlon Lewis, Steven Lohrenz, Antonio Mannino, John Marra, Chuck McClain, Christophe Menkes, Mark Miller, Ru Morrison, James Mueller, Ruben Negri, James Nelson, Norman Nelson, Mary Jane Perry, David Phinney, John Porter, Collin Roesler, David Siegel, Mike Sieracki, Jeffrey Smart, Raymond Smith, James Spinhirne, Dariusz Stramski, Rick Stumpf, Ajit Subramaniam, Chuck Trees, Ronald Zaneveld, Eric Zettler and Richard Zimmerman. For the BIOCHEM data we thank the Fisheries and Oceans Canada and the following data contributors: Diane Archambault, Hughes Benoit, Esther Bonneau, Eugene Colbourne, Alain Gagne, Yves Gagnon, Tom Hurlbut, Catherine Johnson, Pierre Joly, Maurice Levasseur, Jean-Francois Lussier, Sonia Michaud, Patrick Ouellet, Jacques Plourde, Stephane Plourde, Luc Savoie, Michael Scarratt, Philippe Schwab, Michel Starr and François Villeneuve. We also thank Laure Devine for the help in processing the BIOCHEM dataset. We thank Ralph Goericke for allowing the use of the CalCOFI and CCELTER data. CalCOFI research is supported by contributions from the participating agencies: the California State Department of Fish and Wildlife, NOAA, National Marine Fisheries Service, Southwest Fisheries Science Center, and the University of California, Integrative Oceanography Division at the Scripps Institution of Oceanography, UCSD. The authors would like to thank the Oceanic Platform of the Canary Islands (PLOCAN) and its staff for making freely available the use of this ESTOC dataset. We thank the following MARE-DAT data providers: Robert Bidigare, Denise Cummings, Giacomo DiTullio, Chris Gallienne, Ralf Goericke, Patrick Holligan, David Karl, Michael Landry, Michael Lomas, Michael Lucas, Jean-Claude Marty, Walker Smith, Rick Stumpf, Emilio Suarez, Koji Suzuki, Maria Vernet and Simon Wright. We thank Oscar Schofield, Raymond Smith and Maria Vernet for allowing the use of the PALMER data. Data from the Palmer LTER data repository were supported by the Office of Polar Programs, NSF grants OPP-9011927, OPP-9632763 and OPP-0217282. We thank the Sea-DataNet Pan-European infrastructure for ocean and marine data management (<http://www.seadatanet.org>, last access: 10 July 2019). We thank Emmanuel Boss for the TARA data. Funding for the collection and processing of the TARA dataset was provided by the NASA Ocean Biology and Biogeochemistry programme un-

der grants NNX11AQ14G, NNX09AU43G, NNX13AE58G and NNX15AC08G to the University of Maine. Vanda Brotas received a sabbatical grant from FCT SFRH/BSAB/142981/201. We would like to honour the memory of Marcel Wernand and Tiffany Moisan, authors who contributed to the first version.

Financial support. This research has been supported by the ESA Climate Change Initiative – Ocean Colour project (ref: AO-1/6207/09/I-LG).

Review statement. This paper was edited by David Carlson and reviewed by two anonymous referees.

References

- Amante, C. and Eakins, B. W.: ETOPO1, 1 Arc-Minute Global Relief Model: Procedures, Data Sources and Analysis. NOAA Technical Memorandum NESDIS NGDC-24. National Geophysical Data Center, NOAA, available at: <https://www.ngdc.noaa.gov/mgg/global/relief/ETOPO1/docs/ETOPO1.pdf> (last access: 10 July 2019), 2009.
- Antoine, D., André, J. M., and Morel, A.: Oceanic primary production: 2. Estimation at global scale from satellite (CZCS) chlorophyll, *Global Biogeochem. Cy.*, 10, 57–70, 1996.
- Antoine, D., Chami, M., Claustre, H., D’Ortenzio, F., Morel, A., Bécu, G., Gentili, B., Louis, F., Ras, J., Roussier, E., Scott, A. J., Tailliez, D., Hooker, S. B., Guevel, P., Desté, J.-F., Dempsey, C., and Adams, D.: BOUSSOLE: a joint CNRS-INSU, ESA, CNES and NASA Ocean Color Calibration And Validation Activity. NASA Technical memorandum No. 2006-214147, 61 pp., available at: <https://ntrs.nasa.gov/archive/nasa/casi.ntrs.nasa.gov/20070028812.pdf> (last access: 10 July 2019), 2006.
- Antoine, D., Guevel, P., Desté, J.-F., Bécu, G., Louis, F., Scott, A., and Bardey, P.: The “BOUSSOLE” Buoy – A New Transparent-to-Swell Taut Mooring Dedicated to Marine Optics: Design, Tests, and Performance at Sea, *J. Atmos. Ocean. Tech.*, 25, 968–989, 2008.
- Bailey, S. W. and Werdell, P. J.: A multi-sensor approach for the on-orbit validation of ocean color satellite data products, *Remote Sens. Environ.*, 102, 12–23, 2006.
- Barker, K.: In-situ Measurement Protocols. Part A: Apparent Optical Properties, Issue 2.0, Doc. no: CO-SCI-ARG-TN-0008, ARGANS Ltd., p. 126, available at: http://mermaid.acri.fr/dataproto/CO-SCI-ARG-TN-0008_In-situ_Measurement_Protocols-AOPs_Issue2_Mar2013.pdf, (last access: 10 July 2019), 2013a.
- Barker, K.: In-situ Measurement Protocols. Part B: Inherent Optical Properties and in-water constituents, Issue 1.0, Doc. no: CO-SCI-ARG-TN-0008, ARGANS Ltd., p. 39, , available at: http://mermaid.acri.fr/dataproto/CO-SCI-ARG-TN-0008_In-situ_Measurement_Protocols-IOPs-Constituents_Issue1_Mar2013.pdf (last access: 10 July 2019), 2013b.
- Bracher, A.: Phytoplankton pigment concentrations during POLARSTERN cruise ANT-XXVII/2. Alfred Wegener Institute, Helmholtz Centre for Polar and Marine Research, Bremerhaven, PANGAEA, <https://doi.org/10.1594/PANGAEA.848590>, 2015.
- Bracher, A., Taylor, M. H., Taylor, B. B., Dinter, T., Röttgers, R., and Steinmetz, F.: Phytoplankton pigments, hyperspectral downwelling irradiance and remote sensing reflectance during POLARSTERN cruises ANT-XXIII/1, ANT-XXIV/1, ANT-XXIV/4, ANT-XXVI/4, and Maria S. Merian cruise MSM18/3. PANGAEA, <https://doi.org/10.1594/PANGAEA.847820>, 2015.
- Bricaud, A., Claustre, H., Ras, J., and Oubelkheir, K.: Natural variability of phytoplanktonic absorption in oceanic waters: Influence of the size structure of algal populations, *J. Geophys. Res.*, 109, C11010, <https://doi.org/10.1029/2004JC002419>, 2004.
- Clark, D. K., Yarborough, M. A., Feinholz, M. E., Flora, S., Broenkow, W., Kim, Y. S., Johnson, B. C., Brown, S. W., Yuen, M., and Mueller, J. L.: MOBY, A Radiometric Buoy for Performance Monitoring and Vicarious Calibration of Satellite Ocean Colour Sensors: Measurements and Data Analysis Protocols, in: *Ocean Optics Protocols for Satellite Ocean Colour Sensor Validation*, NASA Technical Memo. 2003-211621/Rev4, Vol VI, 3-34, edited by: Muller, J. L., Fargion, G., and McClain, C., NASA/GSFC, Greenbelt, MD, USA, 2003.
- Dandonneau, Y. and Niang, A.: Assemblages of phytoplankton pigments along a shipping line through the North Atlantic and Tropical Pacific, *Prog. Oceanogr.*, 73, 127–144, <https://doi.org/10.1016/j.pocean.2007.02.003>, 2007.
- Devine, L., Kennedy, M. K., St-Pierre, I., Lafleur, C., Ouellet, M., and Bond, S.: BioChem: the Fisheries and Oceans Canada database for biological and chemical data, *Can. Tech. Rep. Fish. Aquat. Sci.*, 3073, iv + 40 pp., available at: <http://waves-vagues.dfo-mpo.gc.ca/Library/351319.pdf> (last access: 10 July 2019), 2014.
- DFO: BioChem: database of biological and chemical oceanographic data, Department of Fisheries and Oceans, Canada, available at: <http://www.dfo-mpo.gc.ca/science/data-donnees/biochem/index-eng.html> (last access: 10 July 2019), 2018.
- Goericke, R.: Chlorophyll and phaeopigments measured from discrete bottle samples from CCE LTER process cruises in the California Current System, determined by extraction and bench fluorometry, 2006–2017 (ongoing). Environmental Data Initiative. <https://doi.org/10.6073/pasta/7feb632dabb30f0e79683017721a83c7>, 2017.
- Gordon, H. R. and Clark, D. K.: Clear water radiances for atmospheric correction of coastal zone color scanner imagery, *Appl. Optics*, 20, 4175–4180, 1981.
- Gregg, W. W. and Carder, K. L.: A simple spectral solar irradiance model for cloudless maritime atmospheres, *Limnol. Oceanogr.*, 35, 1657–1675, 1990.
- IOCCG: Why Ocean Colour? The Societal Benefits of Ocean-Colour Technology, edited by: Platt, T., Hoepffner, N., Stuart, V., and Brown, C., Reports of the International Ocean-Colour Coordinating Group, No. 7, IOCCG, Dartmouth, Canada, 2008.
- IOCCG report 5: “Remote Sensing of Inherent Optical Properties: Fundamentals, Tests of Algorithms, and Applications”, in: *Reports of the International Ocean-Colour Coordinating Group*, No. 5. vol. 5, edited by: Lee, Z.-P., IOCCG, Dartmouth, Canada, p. 126, 2006.
- Karl, D. M. and Michaels, A. F.: The Hawaiian Ocean Time-series (HOT) and Bermuda Atlantic Time-series Study (BATS) – Preface, *Deep-Sea Res. Pt. II*, 43, 127–128, 1996.
- Matrai, P. A., Olson, E., Suttles, S., Hill, V. J., Codispoti, L. A., Light, B., and Steele, M.: Synthesis of primary production in the

- Arctic Ocean: I. Surface waters, 1954–2007, *Prog. Oceanogr.*, 110, 93–106, <https://doi.org/10.1016/j.pocean.2012.11.004>, 2013.
- Morel, A. and Gentilli, B.: Diffuse Reflectance of Oceanic Waters. 3. Implications of Bidirectionality for the Remote-Sensing Problem, *Appl. Optics*, 35, 4850–4862, 1996.
- Morel, A. and Maritorena, S.: Bio-optical properties of oceanic waters: A reappraisal, *J. Geophys. Res.*, 106, 7163–7180, 2001.
- Morel, A., Antoine, D., and Gentilli, B.: Bidirectional reflectance of oceanic waters: accounting for Raman emission and varying particle scattering phase function, *Appl. Optics*, 41, 6289–6306, 2002.
- Nechad, B., Ruddick, K., Schroeder, T., Oubelkheir, K., Blondeau-Patissier, D., Cherukuru, N., Brando, V., Dekker, A., Clementson, L., Banks, A. C., Maritorena, S., Werdell, P. J., Sá, C., Brotas, V., Caballero de Frutos, I., Ahn, Y.-H., Salama, S., Tilstone, G., Martinez-Vicente, V., Foley, D., McKibben, M., Nahorniak, J., Peterson, T., Siliò-Calzada, A., Röttgers, R., Lee, Z., Peters, M., and Brockmann, C.: CoastColour Round Robin data sets: a database to evaluate the performance of algorithms for the retrieval of water quality parameters in coastal waters, *Earth Syst. Sci. Data*, 7, 319–348, <https://doi.org/10.5194/essd-7-319-2015>, 2015a.
- Nechad, B., Ruddick, K., Schroeder, T., Blondeau-Patissier, D., Cherukuru, N., Brando, V. E., Dekker, A. G., Clementson, L., Banks, A., Maritorena, S., Werdell, J., Sá, C., Brotas, V., Caballero de Frutos, I., Ahn, Y.-H., Salama, S., Tilstone, G., Martinez-Vicente, V., Foley, D., McKibben, M., Nahorniak, J., Peterson, T. D., Siliò-Calzada, A., Röttgers, R., Lee, Z., Peters, M., and Brockmann, C.: CoastColour Round Robin datasets, Version 1. PANGAEA, <https://doi.org/10.1594/PANGAEA.841950>, 2015b.
- Neuer, S., Cianca, A., Helmke, P., Freudenthal, T., Davenport, R., Meggers, H., Knoll, M., Santana-Casiano, J. M., González-Davila, M., Rueda, M.-J., and Llinás, O.: Biogeochemistry and hydrography in the eastern subtropical North Atlantic gyre. Results from the European time-series station ESTOC, *Prog. Oceanogr.*, 72, 1–29, <https://doi.org/10.1016/j.pocean.2006.08.001>, 2007.
- Peloquin, J., Swan, C., Gruber, N., Vogt, M., Claustre, H., Ras, J., Uitz, J., Barlow, R., Behrenfeld, M., Bidigare, R., Dierssen, H., Ditullio, G., Fernandez, E., Gallienne, C., Gibb, S., Goericke, R., Harding, L., Head, E., Holligan, P., Hooker, S., Karl, D., Landry, M., Letelier, R., Llewellyn, C. A., Lomas, M., Lucas, M., Mannino, A., Marty, J.-C., Mitchell, B. G., Muller-Karger, F., Nelson, N., O'Brien, C., Prezelin, B., Repeta, D., Jr. Smith, W. O., Smythe-Wright, D., Stumpf, R., Subramaniam, A., Suzuki, K., Trees, C., Vernet, M., Wasmund, N., and Wright, S.: The MAREDAT global database of high performance liquid chromatography marine pigment measurements, *Earth Syst. Sci. Data*, 5, 109–123, <https://doi.org/10.5194/essd-5-109-2013>, 2013a.
- Peloquin, J. M., Swan, C., Gruber, N., Vogt, M., Claustre, H., Ras, J., Uitz, J., Barlow, R. G., Behrenfeld, M. J., Bidigare, R. R., Dierssen, H., Ditullio, G., Fernández, E., Gallienne, C., Gibb, S., Goericke, R., Harding, L., Head, E. J. H., Holligan, P. M., Hooker, S. B., Karl, D., Landry, M. R., Letelier, R., Llewellyn, C., Lomas, M. W., Lucas, M., Mannino, A., Marty, J.-C., Mitchell, G., Muller-Karger, F. E., Nelson, N., O'Brien, C. J., Prezelin, B., Repeta, D. J., Smith, W. O. Jr., Smythe-Wright, D., Stumpf, R., Subramaniam, A., Suzuki, K., Trees, C., Vernet, M., Wasmund, N., and Wright, S.: The MAREDAT global database of high performance liquid chromatography marine pigment measurements - Gridded data product (NetCDF) – Contribution to the MAREDAT World Ocean Atlas of Plankton Functional Types. PANGAEA, <https://doi.org/10.1594/PANGAEA.793246>, 2013b.
- Philipson, P., Kratzer, S., Ben Mustapha, S., Strömbeck, N., and Stelzer, K.: Satellite-based water quality monitoring in Lake Vänern, Sweden, *Int. J. Remote Sens.*, 37, 3938–3960, <https://doi.org/10.1080/01431161.2016.1204480>, 2016.
- Pope, R. and Fry, E.: Absorption spectrum (380–700 nm) of pure waters: II. Integrating cavity measurements, *Appl. Optics*, 36, 8710–8723, 1997.
- Robinson, C., Poulton, A. J., Holligan, P. M., Baker, A. R., Forster, G., Gist, N., Jickells, T. D., Malin G., Upstill-Goddard, R., Williams, R. G., Woodward, E. M. S., and Zubkov, M. V.: The Atlantic Meridional Transect (AMT) Programme: a contextual view 1995–2005, *Deep-Sea Res. Pt. II*, 53, 1485–1515, <https://doi.org/10.1016/j.dsr2.2006.05.015>, 2006.
- Sathyendranath, S., Stuart, V., Nair, A., Oka, K., Nakane, T., Bouman, H., Forget, M.-H., Maass, H., and Platt, T.: Carbon-to-chlorophyll ratio and growth rate of phytoplankton in the sea, *Mar. Ecol. Prog. Ser.*, 383, 73–84, <https://doi.org/10.3354/meps07998>, 2009.
- Schofield, O., Vernet, M., and Prezelin, B.: Photosynthetic pigments of water column samples analyzed using High Performance Liquid Chromatography (HPLC), sampled during the Palmer LTER field seasons at Palmer Station, Antarctica, 1991–2011. Environmental Data Initiative, <https://doi.org/10.6073/pasta/c479b922d42ace1ce37f9a977e214952>, 2017.
- Schofield, O., Vernet, M., and Smith, R.: Chlorophyll and phaeopigments from water column samples, collected at selected depths at Palmer Station Antarctica, during the Palmer LTER field seasons, 1991–2018. Environmental Data Initiative, <https://doi.org/10.6073/pasta/0624c7d161d3b5486d7ba06c2e50ee21>, 2018a.
- Schofield, O., Vernet, M., and Smith, R.: Chlorophyll and phaeopigments from water column samples, collected at selected depths aboard Palmer LTER annual cruises off the coast of the Western Antarctic Peninsula, 1991–present. Environmental Data Initiative, <https://doi.org/10.6073/pasta/dea95430a6ad84ecea023ee1ced650d3>, 2018b.
- Schofield, O., Vernet, M., and Prezelin, B.: Photosynthetic pigments of water column samples and analyzed with High Performance Liquid Chromatography (HPLC), collected aboard Palmer LTER annual cruises off the coast of the Western Antarctica Peninsula, 1991–2016. Environmental Data Initiative, <https://doi.org/10.6073/pasta/4d583713667a0f52b9d2937a26d0d82e>, 2018c.
- Soppa, M. A., Dinter, T., Taylor, B. B., and Bracher, A.: Particulate and phytoplankton absorption during POLARSTERN cruises ANT-XXVII/3 and ANT-XXVIII/3. PANGAEA, <https://doi.org/10.1594/PANGAEA.819617>, 2013.
- Soppa, M. A., Hirata, T., Silva, B., Dinter, T., Peeken, I., Wiegmann, S., and Bracher, A.: Phytoplankton pigment concentrations in the South Atlantic Ocean. PANGAEA, <https://doi.org/10.1594/PANGAEA.848591>, 2014.

- Taylor, B. B., Torrecilla, E., Bernhardt, A., Taylor, M. H., Peeken, I., Röttgers, R., Piera, J., and Bracher, A.: Bio-optical provinces in the eastern Atlantic Ocean and their biogeographical relevance, *Biogeosciences*, 8, 3609–3629, <https://doi.org/10.5194/bg-8-3609-2011>, 2011a.
- Taylor, B. B., Torrecilla, E., Bernhardt, A., Taylor, M. H., Peeken, I., Röttgers, R., Piera, J., and Bracher, A.: Phytoplankton pigments, composition, hyperspectral light field data and biooptical properties during POLARSTERN cruise ANT-XXV/1. PANGAEA, <https://doi.org/10.1594/PANGAEA.819099>, 2011b.
- Thuillier, G., Hersé, M., Labs, D., Foujols, T., Peetermans, W., Gillotay, D., Simon, P. C., and Mandel, H.: The solar spectral irradiance from 200 nm to 2400 nm as measured by the SOLSPEC spectrometer from the ATLAS 1-2-3 and EURECA missions, *Sol. Phys.*, 214, 1–22, 2003.
- Tiwari, S. P. and Shanmugam, P.: An optical model for deriving the spectral particulate backscattering coefficients in oceanic waters, *Ocean Sci.*, 9, 987–1001, <https://doi.org/10.5194/os-9-987-2013>, 2013.
- Trees, C. C., Kennicutt II, M. C., and Brooks, J. M.: Errors associated with the standard fluorimetric determination of chlorophylls and phaeopigments, *Mar. Chem.*, 17, 1–12, 1985.
- Valente, A., Sathyendranath, S., Brotas, V., Groom, S., Grant, M., Taberner, M., Antoine, D., Arnone, R., Balch, W. M., Barker, K., Barlow, R., Bélanger, S., Berthon, J.-F., Beşiktepe, Ş., Brando, V., Canuti, E., Chavez, F., Claustre, H., Crout, R., Frouin, R., García-Soto, C., Gibb, S. W., Gould, R., Hooker, S., Kahru, M., Klein, H., Kratzer, S., Loisel, H., McKee, D., Mitchell, B. G., Moisan, T., Muller-Karger, F., O’Dowd, L., Ondrusek, M., Poulton, A. J., Repecaud, M., Smyth, T., Sosik, H. M., Twardowski, M., Voss, K., Werdell, J., Wernand, M., and Zibordi, G.: A compilation of global bio-optical in situ data for ocean-colour satellite applications, *Earth Syst. Sci. Data*, 8, 235–252, <https://doi.org/10.5194/essd-8-235-2016>, 2016.
- Valente, A., Sathyendranath, S., Brotas, V., Groom, S., Grant, M., Taberner, M., Antoine, D., Arnone, R., Balch, W. M., Barker, K., Barlow, R. G., Bélanger, S., Berthon, J.-F., Besiktepe, S., Borsheim, Y., Bracher, A., Brando, V., Canuti, E., Chavez, F., Cianca, A., Claustre, H., Clementson, L., Crout, R., Frouin, R., García-Soto, C., Gibb, S. W., Gould, R., Hooker, S. B., Kahru, M., Kampel, M., Klein, H., Kratzer, S., Kudela, R., Ledesma, J., Loisel, H., Matrai, P., McKee, D., Mitchell, B. G., Moisan, T., Muller-Karger, F., O’Dowd, L., Ondrusek, M., Platt, T., Poulton, A., Repecaud, M., Schroeder, T., Smyth, T., Smythe-Wright, D., Sosik, H. M., Twardowski, M., Vellucci, V., Voss, K., Werdell, J., Wernand, M., Wright, S., and Zibordi, G.: A compilation of global bio-optical in situ data for ocean-colour satellite applications – version two, PANGAEA, <https://doi.org/10.1594/PANGAEA.898188>, 2019.
- Werdell, P. J. and Bailey, S. W.: An improved bio-optical data set for ocean color algorithm development and satellite data product validation, *Remote Sens. Environ.*, 98, 122–140, 2005.
- Werdell, P. J., Bailey, S., Fargion, G., Pietras, C., Knobelspiesse, K., Feldman, G., and McClain, C.: Unique data repository facilitates ocean color satellite validation, *EOS Transactions AGU*, 84, 377–392, <https://doi.org/10.1029/2003EO380001>, 2003.
- Zhang, X., Hu, L., and He, M.-X.: Scattering by pure seawater: Effect of Salinity, *Opt. Express*, 17, 5698–5710, 2009.
- Zibordi, G., Holben, B. N., Hooker, S. B., Mélin, F., Berthon, J.-F., Slutsker, I., Giles, D., Vandemark, D., Feng, H., Rutledge, K., Schuster, G., and Al Mandoos, A.: A network for standardized ocean color validation measurements, *EOS Trans. Am. Geophys. Union*, 87, 293–297, <https://doi.org/10.1029/2006EO300001>, 2006.
- Zibordi, G., Holben, B. N., Slutsker, I., Giles, D., D’Alimonte, D., Mélin, F., Berthon, J.-F., Vandemark, D., Feng, H., Schuster, G., Fabbri, B. E., Kaitala, S., and Seppälä, J.: AERONET-OC: A network for the validation of ocean color primary radiometric products, *J. Atmos. Ocean. Tech.*, 26, 1634–1651, 2009.
- Zindler, C., Bracher, A., Marandino, C. A., Taylor, B. B., Torrecilla, E., Kock, A., and Bange, H. W.: Sulphur compounds, methane, and phytoplankton during SONNE cruise SO202/2 (Transbrom Sonne). PANGAEA, <https://doi.org/10.1594/PANGAEA.820607>, 2013.