



TECH NOTE

Radiometric Temperature Measurements

Surface characteristics and atmospheric compensation.

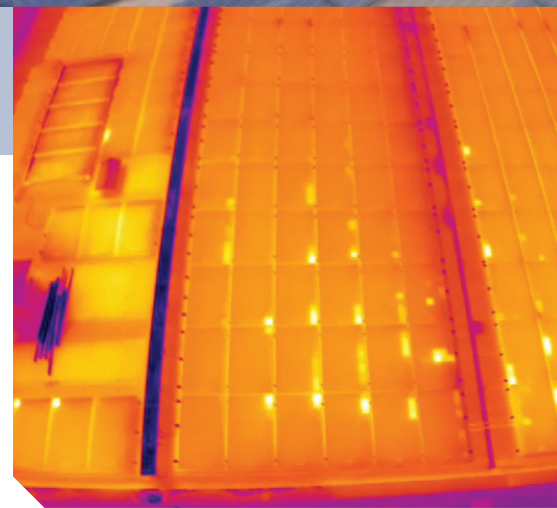
A radiometric thermal camera measures the temperature of a surface by interpreting the intensity of an infrared signal reaching the camera. This non-contact and non-destructive technique (NDT) gives users enormous advantages for many of their surface temperature measurement applications. It can be integrated onto unmanned aerial systems (UAS).

A UAS allows an operator to move and position a thermal camera to quickly make temperature measurements over large areas and in difficult or dangerous environments. For example, a UAS can measure the surface temperature of a heat exchanger on a roof, a faulty connection on a high voltage transmission line, solar cells in a solar panel, and over large agricultural fields. However, the ability to remotely sense temperature, as opposed to direct surface contact, requires accounting for particular surface and environmental conditions. Some of these conditions are illustrated in Figure 1.

It is important to state that radiometric temperature measurements are surface

infrared measurements. Radiometric measurements should be restricted to optically opaque materials. Metals and organic material are usually completely opaque and radiometric measurements should be able to resolve their surface temperature. Although there are materials that are semi-translucent to infrared heat (sapphire glass, zinc sulfide glass, zirconia oxides), radiometric measurements of these surfaces must account for the total volumetric and through-plane temperature of the material; this significantly increases the complexity of the analysis.

Remote temperature sensing of a surface relies on the ability to accurately



See defects in solar panels that would be invisible to a visible camera during preventative maintenance.

compensate for surface characteristics, atmospheric interference, and the imaging system.

The surface characteristics that influence the temperature measurement are surface emissivity and reflectivity at the infrared spectral wavelengths. The atmosphere will absorb and emit thermal energy based on its composition and the distance between the camera and the surface. Finally, the ability to spatially resolve detailed temperature

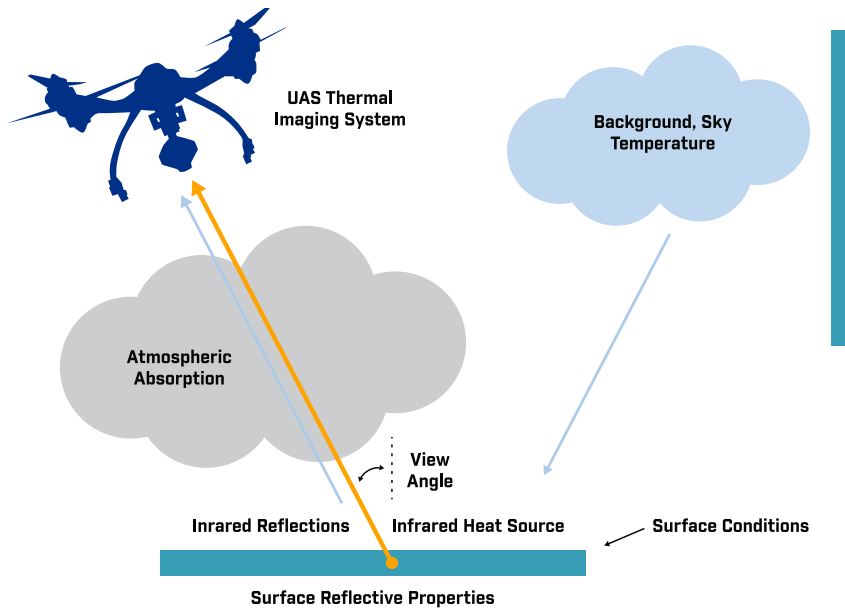


Figure 1: Remote UAS Thermal Imaging System needs to address unique radiometric temperature challenges.

measurements in a thermal image is influenced by image focus, blur, and the pixel resolution. The influence of each of these factors on measurement accuracy is highly dependent on the specific measurement application and each must be accounted for and resolved.

EMISSION

Emissivity is a measure of the efficiency of a surface to emit thermal energy relative to a perfect blackbody source. It directly scales the intensity of the thermal emission, and all real values are less than 1.0. The emissivity may be highly dependent on the surface morphology, roughness, oxidation, spectral wavelength, temperature and view angle. A measurement that does not account for the real emissivity of a surface will appear “colder” than it actually is. For agricultural applications, many organic materials and materials with very rough surfaces have emissivity values approaching 1.0. For other applications, including power line and solar cell inspection, the surface might be a highly polished glass or metal, both of which can have much lower emissivity values. As a reference, Table 1 demonstrates the wide range of emissivity values that may be encountered in UAS radiometric applications.

REFLECTIVITY

A camera close to a surface is sensing both the heat sustained from the surface temperature and the reflected

Table 1: Emissivity is dependent on surface morphology, layers, oxidation, spectral wavelength, view angle, and temperature.

Material Description	Emissivity [n.d.] ^{1,2}
Asphalt	0.90 to 0.98
Concrete	0.92
Soil, dry	0.90
Soil, wet	0.95
Wood	0.90
Water	0.92 to 0.96
Ice	0.96 to 0.98
Snow	0.83
Brick	0.93 to 0.96
Lacquer, paint	0.80 to 0.95
Lacquer, flat black	0.97
Textiles	0.90
Skin, human	0.98
Aluminum, polished	0.04 to 0.06
Aluminum, anodized	0.55
Steel, rusty	0.69
Steel, stainless	0.16 to 0.45

background environmental temperature. It is very challenging to make temperature measurements of a highly reflective surface because the image is influenced by the background thermal reflections. In a UAS application, an unpainted and clean metal roof can appear colder than it actually is because the shiny roof reflects the sky above

it. Consider the case of a stainless steel sheet on a rooftop, 0.80 reflectivity and 0.20 emissivity, a radiometric temperature measurement would be highly biased towards the reflected background temperature of the sky. A clear sky may have a background temperature that is typically well below 0°C, and possibly as low as -20°C. The actual sky background temperature will vary depending on atmospheric conditions and time of day.

Reflective surfaces pose additional challenges in UAS applications. Reflection of the sun in the thermal image will appear as sun glints. Radiometric temperature measurements of the sun glints can be inaccurate by hundreds of degrees. It is advisable to take a sequence of images of the surface from different angles to reduce the influence of any single sun glint. However, care must be taken to not make measurements at exceedingly oblique angles because reflectivity degrades based on view angle. Alternatively, a very close range and straight-on measurements can result in the camera viewing a reflection of itself and result in inaccurate measurements. Figure 2, illustrates the view angle challenges for radiometric temperature measurements and recommends making measurements less than 60° normal to the surface.

Much like emissivity, the reflectivity of a surface is highly dependent on the surface morphology and roughness. Since reflectivity (R) is related to emissivity (E) by $R = 1 - E$, the importance of reflectivity can be greatly reduced by making measurements of surfaces with very high emissivity, ideally greater than 0.90. For UAS measurements of controlled surfaces, such as a steel tank on a rooftop, high emissivity/low reflectivity matte-flat black paint can be used to make “measurement patches” that result in highly reproducible measurements.

ATMOSPHERIC TRANSMISSION

The earth’s atmosphere interferes with the thermal image by absorbing and emitting infrared radiation based on the air density, relative humidity (RH), and distance between the object surface and the camera. The atmospheric transmission between the camera and the surface can change the radiometric temperature measurement and is a measure of the effective heat reaching the

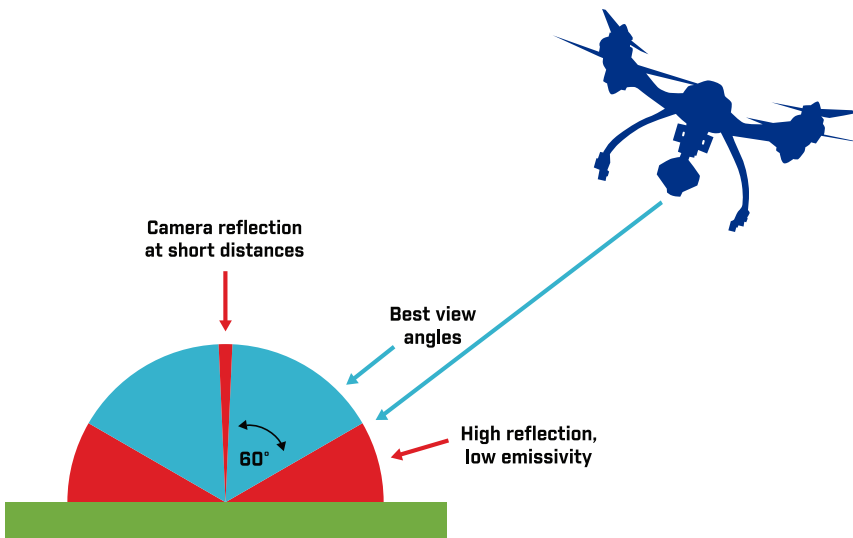


Figure 2: Radiometric temperature measurements should avoid straight-on measurements to reduce direct camera reflection and avoid oblique angles to reduce overall reflection.

camera. Not accounting for the atmospheric transmission will result in radiometric measurements that appear colder than the actual surface temperature.

On a very warm and humid day, a 100-meter air path (35°C air temperature, 80% RH) has a theoretical transmission of 80%. That means that only 80% of the thermal radiative heat emitted from surface will reach the camera. If this atmospheric transmission loss is not accounted for, then a UAS looking at a 50°C object with a known emissivity of 0.97 will read 47.6°C: a 2.4°C error caused by the air path alone! The best way to mitigate the atmospheric transmission effect is to minimize the distance between the UAS

camera and the surface. For example, at 10 meters the transmission is 96% and the radiometric temperature uncorrected for air path is 49.5°C.

The atmosphere can affect the temperature measurements in other unexpected ways. Measurements should always be performed in the absence of rain, snow, smoke, dust or any other obscurants because they too will reduce the atmospheric transmission and change the background temperature. Remember that radiometric measurements only report the surface temperature and the surface temperature may be very sensitive to strong winds.

TEMPERATURE SPATIAL RESOLUTION

A radiometric thermal image describing a surface provides a radiometric temperature measurement for each pixel. A very small surface in the image will become exceedingly difficult to accurately measure since the number of pixels describing the dimensions of the surface is diminished. The spot-size effect causes degradation in measurement accuracy due to the effects of optical distortion, diffraction, stray light, and sensor image processing that result in a washed-out image. Not accounting for the spot-size effect will yield measurements that may be highly influenced by nearby surfaces. For example, a warm object may appear colder and a cold object may appear warmer than the actual temperatures.

Although the spot-size effect may be highly dependent on the particular thermal camera, FLIR laboratory measurements on UAS cameras suggest that a measurement spot in the thermal image should be at least 10 pixels in diameter to report a meaningful measurement and a 20 pixel diameter is sufficiently large to negate the spot-size effect. Figure 3 illustrates the improvement in radiometric temperature accuracy as the spot-size is increased.

For UAS applications, the spot-size effect becomes increasingly relevant as the distance between the surface and the camera is increased and the number of pixels describing each spatial feature is reduced. The number of pixels used to resolve the surface area of an object is dependent on the pixel pitch, focal length, distance from the camera to the surface, and the smallest characteristic size (length, diameter) of the surface. Figure 4 illustrates these factors. The number of pixels (N) used to resolve an object is evaluated by the ratio of the camera angular subtense and pixel instantaneous field of view where

$$N = \frac{\alpha}{IFOV_p}$$

and the surface to camera angular subtense $\alpha = d/s$ is the ratio of the distance between the camera to object surface (d) and the size of the object (s). The instantaneous field of view ($IFOV_p$) of each camera pixel is calculated by taking the ratio of the pixel

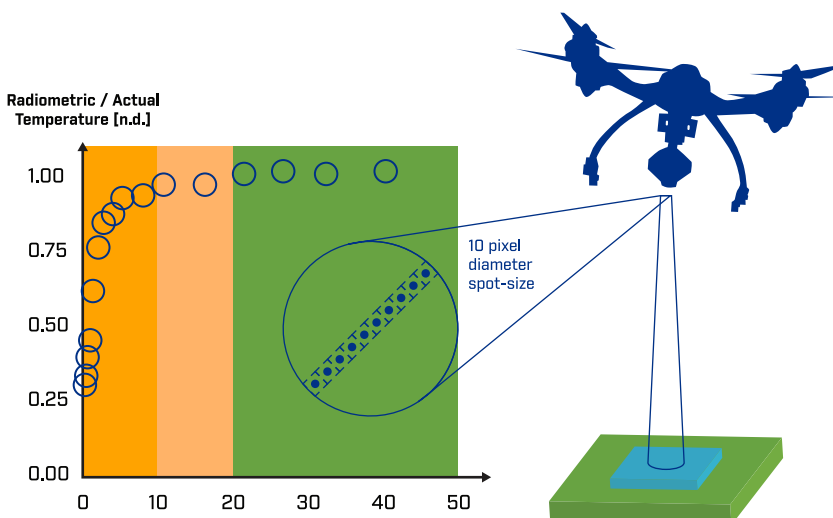


Figure 3: The spot-size effect, caused by optical and physical characteristics of the camera, is most relevant for remote temperature sensing.

pitch (p) and focal length (f), $IFOV_p = p/f$. These relationships can be manipulated to find the maximum recommended measurement distance, smallest necessary object size, and camera characteristics for any particular radiometric temperature application.

Consider a FLIR Vue® Pro R camera with a 13mm lens, 640 by 512 pixel resolution sensor, 17 μm pixel pitch and at an altitude of 20 meters. A 30 centimeter square surface directly below the camera will only be 12 by 12 pixels in a thermal image. Table 2 gives the maximum recommended distance between the camera and an object to maintain at least a 10 pixel resolution in the thermal image for different object sizes.

The focus and blur of a thermal image can also increase the number of pixels necessary to make accurate radiometric measurements. For example, the shutter speed of the Vue Pro camera is fairly long at 1/30 second and a rapidly moving UAS can result in a blurred image with reduced accuracy. A hot surface that is smeared out because of the motion of the UAS will look cooler and a cool surface may appear hotter. Gimbal mounts and active-stabilization techniques can be used to strategically reduce the jitter of the camera for maximizing camera stability and image focus.

Table 2: Recommended maximum viewing distance for different target sizes, illustrated for a Vue Pro R 640/13 mm lens. Image blurring and optical distortion will reduce the recommended distance.

Minimum Surface Dimensions (cm)	Maximum Distance for 10 pixel spot size (m)
5	3.8
20	15.3
40	30.6
60	45.9
80	61.2
100	76.5

For more information about thermal imaging cameras or about this application, please visit www.flir.com/suas

The images displayed may not be representative of the actual resolution of the camera shown. Images for illustrative purposes only.

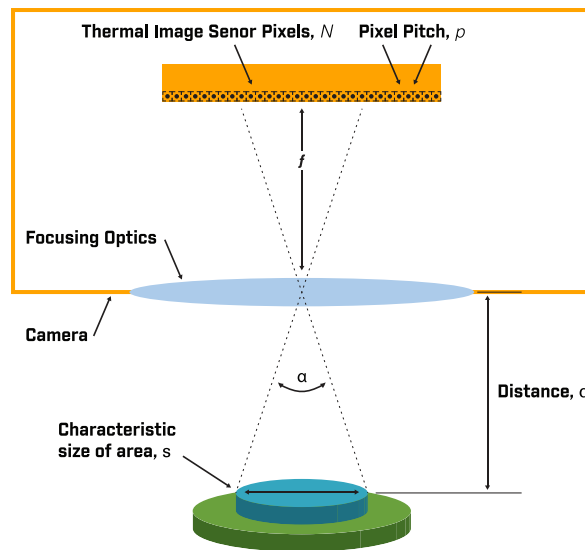


Figure 4: The number of pixels used to resolve the surface area of an object is dependent on the pixel pitch, focal length, distance from the camera to the surface, and the smallest characteristic size (length, diameter) of the surface area.

CONCLUSIONS

Many factors influence the accuracy of radiometric surface temperature measurements from a UAS. Remote temperature sensing of a surface relies on the ability to accurately compensate for surface characteristics (emissivity and reflectivity), atmospheric interference, and the imaging system.

Emissivity depends on surface morphology, layers, oxidation, spectral wavelength, view angle, and temperature. The object surface emissivity should be greater than 0.90 to reduce the impact of background temperature reflection and sun glints. Surface emissivity can be increased by adding a high-emissivity, matte (flat) black paint. Surfaces with low emissivity and high reflectivity that cannot be increased with surface modifications, straight-on and oblique view angles should be avoided to reduce the impact of reflections.

The earth's atmosphere interferes with the thermal image by absorbing and emitting infrared radiation based on the air density, relative humidity (RH), and distance between the object surface and the camera. The atmospheric transmission factors can be

largely negated by making measurements within ten meters or less of the target surface and in a cool and clear atmospheric setting. These conditions mitigate the impact of air temperature and relative humidity. For longer distances, the atmospheric conditions (distance, humidity, temperature) will need to be well characterized to calculate the atmospheric transmission.

Measurements are impacted by the spot-size effect when the number of pixels describing a surface nears the limit needed to attain enough data for accurate measurement. Although it is important to make measurements with a spot-size diameter of at least ten pixels, more pixels are necessary for blurred and out of focus images.

There are significant advantages to remote, non-contact, surface-temperature measurement. It increases efficiency, safety and productivity. It is important to use the best-practices during data collection to mitigate the effect of surface characteristics, atmospheric interference, and the imaging system.

- 1 G. Gaussorgues and S. Chomet, *Infrared Thermography*. Springer, 1994, page 47.
- 2 M. Modest, *Radiative Heat Transfer*. Elsevier Academic Press, 3rd Edition.