



WALKING MAP

Manga TOWN ISHINOMAKI

2017.03



Why is Ishinomaki called a "Manga Town" ?

Shotaro Ishinomori, born in Tome City, Miyagi Prefecture, is a manga artist, the author of many big hits such as "Cyborg 009" and "Kamen Rider." It is said that Ishinomori in his school days rode his bicycle for two to three hours to "Okada Theater" in Ishinomaki City to enjoy movies. For Ishinomori, Ishinomaki city was his second home town.

During a discussion with the Mayor of Ishinomaki in 1995, Ishinomori came up with the "Manga Land Concept." This is a community development project where people can gather and interact, and nurture rich sensibility and creativity, through the characteristics of manga: creativity, media, and internationalism.

From the Edo-era, Ishinomaki prospered as a river port. The Ishinomori Manga Museum in Nakaze Area was built to resemble a 'spaceship' from the future. When coming up with this idea, the designer Ishinomori had in mind the fact that Ishinomaki City used to be a shipbuilding city.

The name given by Ishinomori to the area, "Mangattan," comes from the fact that the geographical features of the Nakaze Area are similar to New York's Manhattan. This idea, connected to the word Manga, makes "Mangattan."

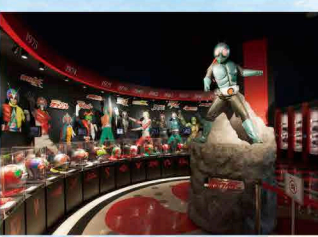


Ishinomori Manga Museum

Japan's greatest Manga Museum, filled with dreams!

Come inside the spaceship and enjoy the exhibitions including Kamen Rider, Robocon, and Cyborg 009! You can also experience the creation of anime, participate in events or workshops held inside and outside of the museum, and watch original animations in the theater.

•Open Hours: 9:00AM-6:00PM
 [9:00AM-5:00PM during December to February]
 Entry permitted up to 30 minutes before closing time
 •Closed: Every 3rd Tuesday
 [Every Tuesday during December to February]
 Open everyday during Golden Week, Summer Holiday and End of the Year and New Year Holidays.
 •Website: www.mangattan.jp/manga/en/



- Restaurant/Cafe/Bar
- Shop
- Lavatory
- Hotel
- Parking lot
- Taxi
- One-way for cars



Ishinomaki Community and Info Center

A resource center with information regarding Ishinomaki City both before and after the Great East Japan Earthquake, explaining the progress of post-disaster reconstruction efforts using a diorama of the future central Ishinomaki, photo panels of the city past and present, and videos. English-speaking staff are usually available (calling beforehand recommended).

•Open Hours: 9:30AM-6:00PM
 •Closed: Every Tuesday (or the following day if the Tuesday is a national holiday)
 •Phone number: 0225-98-4425

Tsunagu Hall

Conveying information about the Earthquake
 Tsunagu Hall is an exhibition space to convey information about the Great East Japan Earthquake to the next generation, and to think about the actual situation and efforts taken post disaster. An information resource center by the Ishinomaki citizens to create a safe and secure future.

•Open Hours: 1:00PM-5:00PM
 •Closed: Sunday, Monday, End of the Year and New Year Holidays

Hashido-ri COMMON

Street food vendors, known as yatai in Japanese, with a mission to "start a new shop in Ishinomaki," gathered to open a "yatai village." Under the bright sunlight or starlight sky, savour the various dishes served by creative chefs! On the weekends, many fun events will also take place. Please come and enjoy with your family and friends.

•Open Hours: 10:00AM-10:00PM (Varies according to shops)
 •Closed: Every Tuesday (or the following day if the Tuesday is a national holiday)

NEWSee

In the aftermath of the tsunami in March 2011, Ishinomaki Hibi Shinbun (a local newspaper company) published poster-sized handwritten papers for six days. The original newspapers are displayed in the museum, along with an exhibition of Ishinomaki City's 100 year history.

•Open Hours: 10:00AM-6:00PM (10:00AM-5:00PM during December to February)
 •Closed: Every Monday



Mangattan Liner

"Mangattan Liner," a train fully decorated with Ishinomori characters, running the Senseki Line since 2003 is a joint project between the JR Line and Ishinomaki City. The train was unable to operate after the Great East Japan Earthquake but, in 2015, resumed operation. Today, Mangattan Liner running every Sunday, is a representation of a City of Manga, Ishinomaki.



Ishinomaki Manga Road

The walk between JR Ishinomaki station to the Ishinomaki Mangattan Museum is known as 'Manga Road,' where monuments of characters from manga artist Ishinomori can be found. As well as these monuments, if you look closely Ishinomori's characters are hidden in many other places such as benches, post boxes and manhole covers. Take a close look as you walk along Manga Road.



Haguro Mountain

A small hill on the south side of Ishinomaki Station. This is a famous sightseeing spot for cherry blossoms, and has a scenic view perfect for taking a stroll.



Fresh Food Market

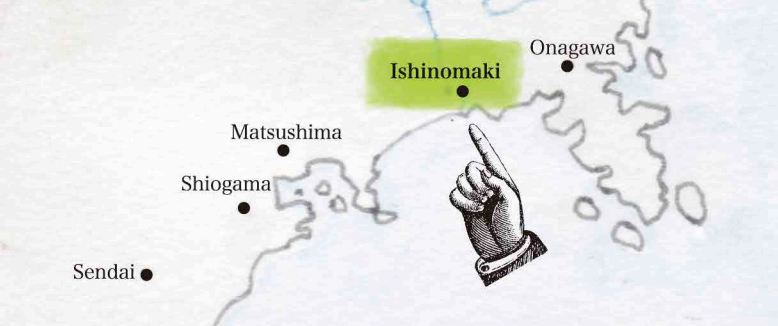
This will be a market selling seafood, processed foods and agricultural products from the local area. An eating space will also be available. Currently under construction and due to open in June 2017.

Hiyori Mountain

Famous sightseeing spot of cherry blossoms and azalea. Also, known for the panoramic view of Ishinomaki City where one could enjoy the Kyu Kitakami River spreading into the Pacific Ocean. If the sky is clear, Oshika peninsula, Matsushima and the mountain range of Zao can be visible as well.

WIDE AREA MAP

- How to get to Ishinomaki from Sendai
- By Train (1 hour on the Senseki line)
 - By Bus (about 1 hour and 15 min)
 - By Car (about 1 hour by the Sanriku Expressway)



Recommended Walking route

