



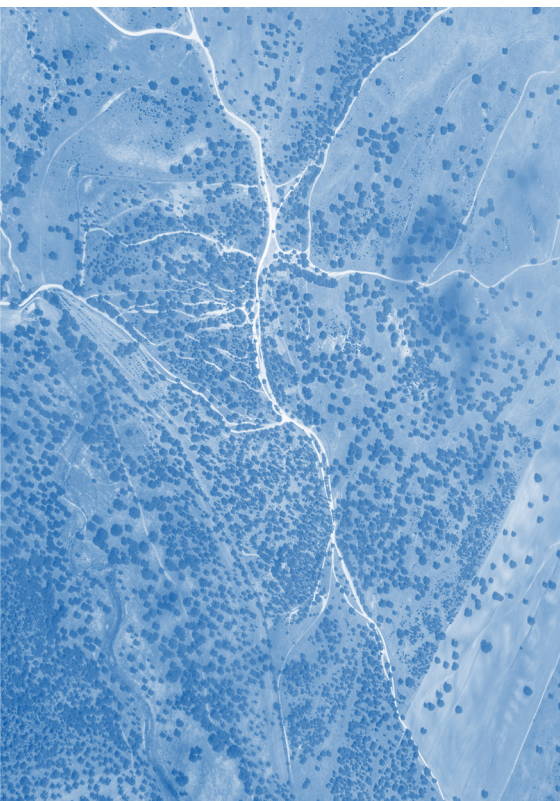
---

an Open Access Journal Published  
by MDPI

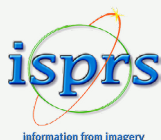
---

Impact Factor 2.8  
CiteScore 6.9

# ISPRS International Journal of Geo-Information



[mdpi.com/  
journal/  
ijgi](http://mdpi.com/journal/ijgi)



# Message from the Editor-in-Chief

The *ISPRS International Journal of Geo-Information* invites you to submit research articles, reviews, and reports covering topics of the whole domain of geo-information. Although the journal was only founded in 2012 it has already achieved wide recognition in the scientific community. We are proud that since April 2015 our journal is indexed by the SCIE of the Web of Science. As Editor-in-Chief I encourage you to consider IJGI for your scientific papers and would be pleased to welcome you as authors.

---

## Editor-in-Chief

Prof. Dr. Wolfgang Kainz

---

## Associate Editors

Prof. Dr. Jamal Jokar Arsanjani  
Prof. Dr. Maria Antonia Brovelli  
Prof. Dr. Eliseo Clementini  
Prof. Dr. Hartwig H. Hochmair  
Prof. Dr. Florian Hruby  
Dr. Wei Huang  
Dr. Dev Raj Paudyal  
Dr. Mingshu Wang  
Prof. Dr. Huayi Wu  
Dr. Godwin Yeboah  
Prof. Dr. Sisi Zlatanova

---

## Aims

*ISPRS International Journal of Geo-Information* (ISSN 2220-9964) provides an advanced forum for the science and technology of geographic information. *ISPRS International Journal of Geo-Information* publishes regular research papers, reviews and communications. Our aim is to encourage scientists to publish their experimental and theoretical results in as much detail as possible. There is no restriction on the maximum length of the papers. The full experimental details must be provided so that the results can be reproduced. There are, in addition, three unique features of this journal:

- manuscripts regarding research proposals and research ideas will be particularly welcomed.
- electronic files and software regarding the full details of the calculation and experimental procedure, if unable to be published in a normal way, can be deposited as supplementary material.
- we also accept manuscripts communicating to a broader audience with regard to research projects financed with public funds.

---

## Scope

- Spatial data modeling (3D and multi-dimensional modeling, data structures and algorithms, uncertainty modeling, ontologies, etc.)
- Spatial data management (spatial databases, cloud data management, blockchain, etc.)
- Spatial analysis and decision making (geocomputation, geosimulation, spatial statistics, etc.)
- Geospatial artificial intelligence (machine learning, deep learning, big data, data mining, cognition, etc.)
- Cartography (geovisualization, visual analytics, augmented and virtual reality, digital globes, etc.)
- Spatial data infrastructures (data integration, standards, metadata, policies, etc.)
- Geospatial web (semantic web, Internet of Things, sensor networks, web services, cloud computing, interoperability, etc.)
- Citizen science, crowd sourcing and volunteered geographic information (open data, social media, etc.)
- Location-based services and trajectory analysis (mobility, real-time GIS, indoor/outdoor modeling and mapping, etc.)
- Urban informatics, smart cities and communities (urban digital twins, BIM/CIM/AEC, etc.)
- Advanced geospatial applications (climate change, ecology, SDGs, disaster management, health, mobility, etc.)

---

## Author Benefits

### Open Access

Unlimited and free access for readers

### No Copyright Constraints

Retain copyright of your work and free use of your article

### Thorough Peer-Review

### Discounts on Article Processing Charges (APC)

If you belong to an institute that participates with the MDPI Institutional Open Access Program

### No Space Constraints, No Extra Space or Color Charges

No restriction on the maximum length of the papers, number of figures or colors

### Journal Rank

JCR - Q2 (Remote Sensing) / CiteScore - Q1 (Geography, Planning and Development)

### Coverage by Leading Indexing Services

Scopus, SCIE (Web of Science), GeoRef, PubAg, dblp, Astrophysics Data System, Inspec, and other databases

### Rapid Publication

A first decision is provided to authors approximately 35.8 days after submission; acceptance to publication is undertaken in 2.2 days (median values for papers published in this journal in the second half of 2024)

MDPI is a member of

CASPA



STM<sup>1</sup>

| C | O | P | E |

SPARC\*  
Europe



DOAJ



ORCID

**Partner Society:**

International Society for Photogrammetry and Remote Sensing (ISPRS)



**Editorial Office**

[ijgi@mdpi.com](mailto:ijgi@mdpi.com)

MDPI

Grosspeteranlage 5

4052 Basel, Switzerland

Tel: +41 61 683 77 34

[mdpi.com](http://mdpi.com)

January 2025

