

でる順
パス単

英検®5級

ボナレブニリーブルグー | lesson1

Repeat

今日の学習内容

do ~ をする

go ~ へ行く

like ~ を好む

play 遊ぶ、~ をする、~ を演奏する

have

watch ~ を見る

① ~ を持っている

② ~ を食べる、飲む

③ ~ を受け取る

Let's Practice!

先生に続けていってみよう。

QQ English

I like...

I don't like...

I like...

I don't like...

STATEMEN

I like... (Positive

I like dogs.



I don't like... (Negative)

I don't like coffee.



Make A Sentence

I like _____. I don't like _____.

Let's Practice!

先生に続けていってみよう。

QQ English

I have...

I don't have...

I have...

I don't have...

STATEMEN

I have... (Positive

I don't have... (Negative)

I have a pen.



I don't have a phone.



Make A Sentence

I have _____. I don't have_____.

I go to...

I don't go to...

ヒント

go to school(学校へ行く)という表現は「通学する」「登校する」という意味を表す決まり文句です。この場合のschoolは「学校の建物」ではなく「授業に出て勉強するための場所」という意味で使われています。学校の本来の目的(勉強)のために学校に行くという意味を表したい場合には、schoolの前にtheはつせずにgo to schoolという言い方をします。

※家族が授業参観に行く場合や、「牛乳配達員」が学校に牛乳を届ける場合は「学校という建物に行く」という意味合いで”go to the school”と言います。

I go to...

I don't go to...

STATEMENT

I go... (Positive)

I don't go... (Negative)

I go to the library.



I don't go to the bank.



Make A Sentence

I go _____. I don't go _____.

I play...

I don't play...

ヒント

I play the piano. や I play the guitar. のように、学期を演奏する場合は冠詞の”the”が付きます。

一方、スポーツをする場合の表現としては冠詞の”the”は付きません。

I play baseball. / I play soccer.

I play...

I don't play...

STATEMENT

I play... (Positive)

I don't play... (Negative)

I play basketball. 

I don't play the violin. 

 **Make A Sentence**

I play ____.

I don't play ____.

Let's Practice!

先生に続けていってみよう。

QQ English®

I watch...

I don't watch...

I watch...

I don't watch...

STATEMEN

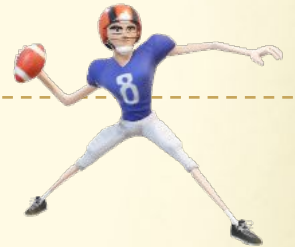
I watch... (Positive

I don't watch... (Negative)

I watch TV.



I don't watch sports.



Make A Sentence

I watch _____. I don't watch _____.

Do you **like**...?

Yes, I do. / No, I don't.

Do you like...?

QUESTION

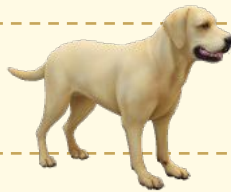
N

Do you like...?

Do you like

dogs?

Do you like coffee?



SHORT

ANSWER

Yes, I do. / No, I don't.

Yes, I do.

No, I don't.



Ask A Question

__ you ____ ____?

Yes, I do. / No, I don't.

Do you **have**...?

Yes, I do. / No, I don't.

Do you have...?

QUESTION

N

Do you have...?

Do you have a pen?

Do you have a phone?



SHORT

ANSWER

Yes, I do. / No, I don't.
Yes, I do.

No, I don't.



Ask A Question

__ you ____ ____? Yes, I do. / No, I don't.

Do you go to...?

Yes, I do. / No, I don't.

Do you go to...?

QUESTION

SHORT ANSWER

Do you go...?

Yes, I do. / No, I don't.

Do you go to the library?



Yes, I do.

Do you go to the bank?



No, I don't.

Ask A Question

__ you ____ ____?

Yes, I do. / No, I don't.

Do you **play**...?

Yes, I do. / No, I don't.

Do you play...?

QUESTION

SHORT ANSWER

Do you **play**...?

Yes, I do. / **No, I don't.**

Do you **play** basketball?



Yes, I do.

Do you **play** the violin?

No, I don't.

Ask A Question

__ you ____ ____?

Yes, I do. / **No, I don't.**

Let's Practice!

先生に続けていってみよう。

QQ English®

Do you **watch**...?

Yes, I do. / No, I don't.

Do you watch...?

QUESTION

N

Do you
watch...?
Do you watch TV?



SHORT

ANSWER

Yes, I do. / No, I
don't.
Yes, I do.

Do you watch sports?



No, I don't.

Ask A Question

__ you ____ ____? Yes, I do. / No, I don't.

Exercise!

Fill in the blanks with the correct answer.

1 A: Do you like bread?

B: Yes, I _____. I _____
bread.

2 A: Do you _____ a book?

B: No, I _____. I _____ have a book.

3 A: Do you _____ to your friend's house?

B: Yes, I _____. I _____ to my friend's house.

4 A: Do you _____ the piano?

B: No, I _____. I _____ the piano.

5 A: Do you _____ anime?

B: Yes, I _____. I watch anime.

レッスン後は、旺文社の「でる順パス単」のテキストを開き、今日学習した単語を使った例文を作ってみましょう。

毎日英語に触れて、使える英語を学びながら「英検®合格」を目指しましょう。

覚えた単語を使えるようになると、英語学習がもっと楽しくなります。次のオンラインレッスンでは、覚えた単語でオンライン先生にもたくさん質問してみよう。

Let's try!

