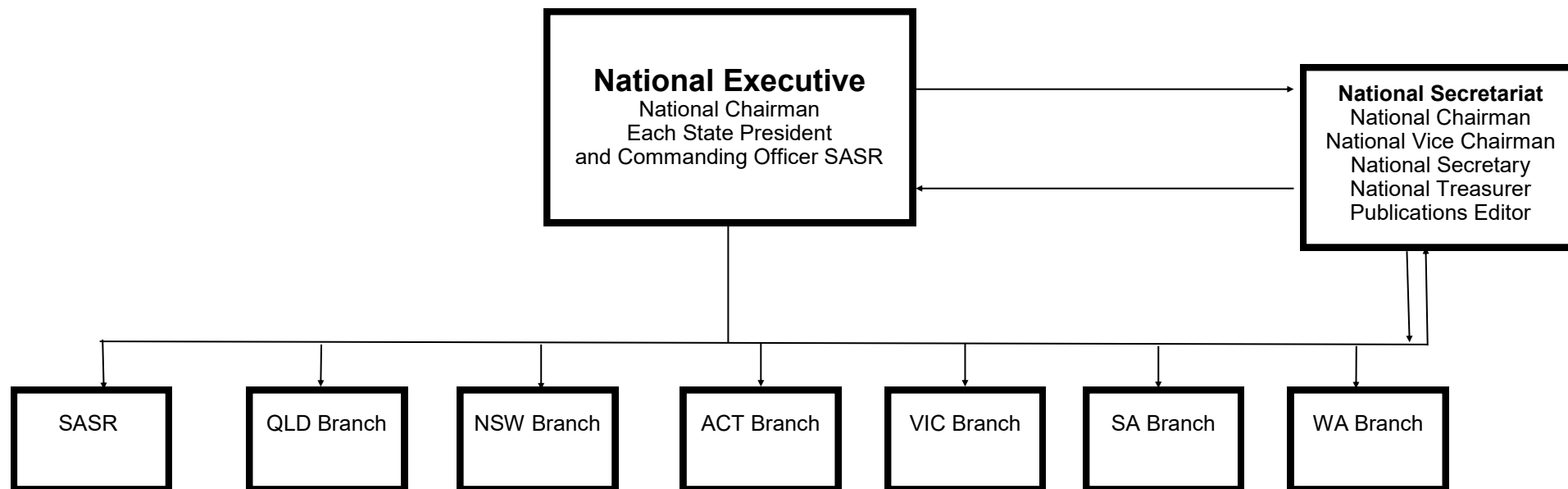




The Structure of the Australian Special Air Service Association (Inc. WA)



Each **State Branch** has a President, Secretary and Treasurer, in addition, that branch may have additional positions on their Committee as deemed necessary.

Each Branch Communicates with the National Executive via the National Secretariat.

The **National Secretariat positions** are drawn from the financial members of the Association

Each member must nominate for a position on the National Secretariat via their State Branch and be voted upon by the members at that Branch AGM.

Those nominations are presented to the **National Executive at the National Annual General Meeting** for ratification.

The candidate/s are elected to the position/s per the **National Constitution rules**.

The National Secretariat conducts the day to day business of the National Executive, managing its correspondence, funds, assets, the National constitution and carries out the directions and decisions of the National Executive.

The **National Executive** is comprised of each **State President**, The **National Chairman** and as a matter of respect The **CO SASR**.