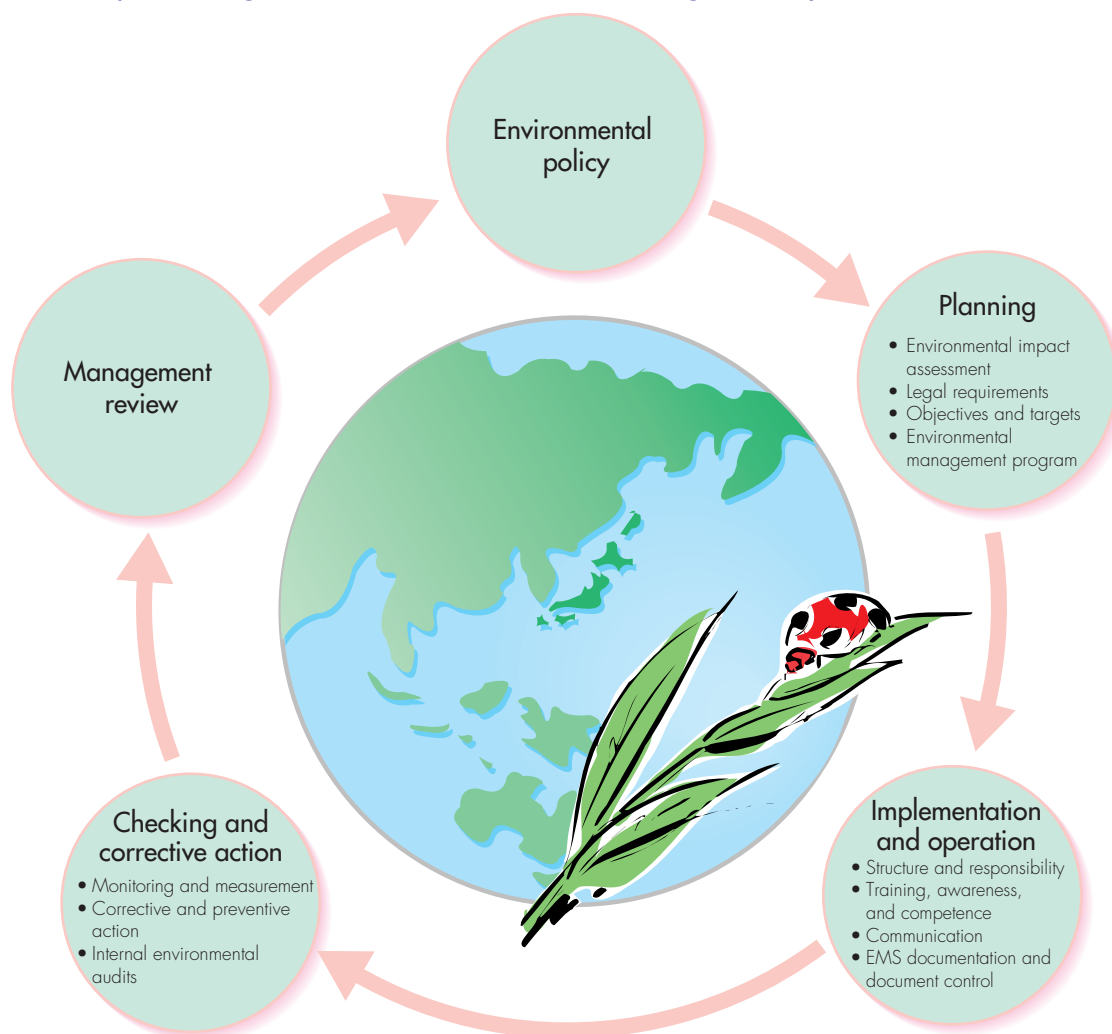


# Environmental Management System



To continually promote environmental preservation activities, the TEL Group has developed and implemented an environmental management system based on the ISO14001 international standard. At present, we conduct internal audits of the environmental management system, primarily at ISO14001-certified facilities. Third party inspections of such facilities are also conducted periodically by the authorized external environmental certification organization.

## ■ Conceptual Diagram of the Environmental Management System



## ■ Establishment of the TEL Group Environmental Committee

In response to mounting global environmental problems, the TEL Group established the TEL Group Environmental Committee in 1996 as an offshoot of the existing Product Safety Committee. The Committee has been sequentially proceeding to promote ISO14001 certification of the seven major manufacturing and research facilities in Japan (Sagami, Tohoku, Saga, Kumamoto, Yamanashi, Ozu, Koshi). As a result of such efforts, all seven facilities have been certified by third-party certification organizations during FY1997–FY1999. The Committee presently oversees the environment at TEL facilities and is promoting environmental preservation activities on a group-wide basis. Environmental issues pertaining to equipment and parts are managed by the Worldwide Product EHS (Environment, Health, and Safety) Committee.

## ■ External Certification (ISO14001)

Seven of TEL Group plants have been ISO14001-certified as of September 30, 1999. Additionally, Tokyo Electron AT Limited, Miyagi Plant aims to obtain ISO certification by August 2002.

Also, Tokyo Electron Phoenix Laboratories, Inc. (Arizona, USA) is working towards obtaining ISO certification in December 2001.

Plant	Certification Date	Expiration Date	Certification No.
Sagami Plant	December 10, 1997	December 10, 2003	EMSC-1110
Tohoku Plant	February 19, 1998	February 19, 2004	EMSC-1118
Saga Plant	March 12, 1998	March 12, 2004	EMSC-1119
Kumamoto Plant, Koshi Plant	March 26, 1998	March 26, 2004	EMSC-1120
Yamanashi Plant	May 15, 1998	May 15, 2004	EMSC-1124
Ozu Plant	August 27, 1999	August 27, 2002	EMSC-1414

